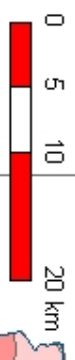


SOIL REACTION (pH)

WEST SINGHBHUM DISTRICT
JHARKHAND



References

- Dist Headquarter
- Important Location
- Canal
- River
- Railway
- Road

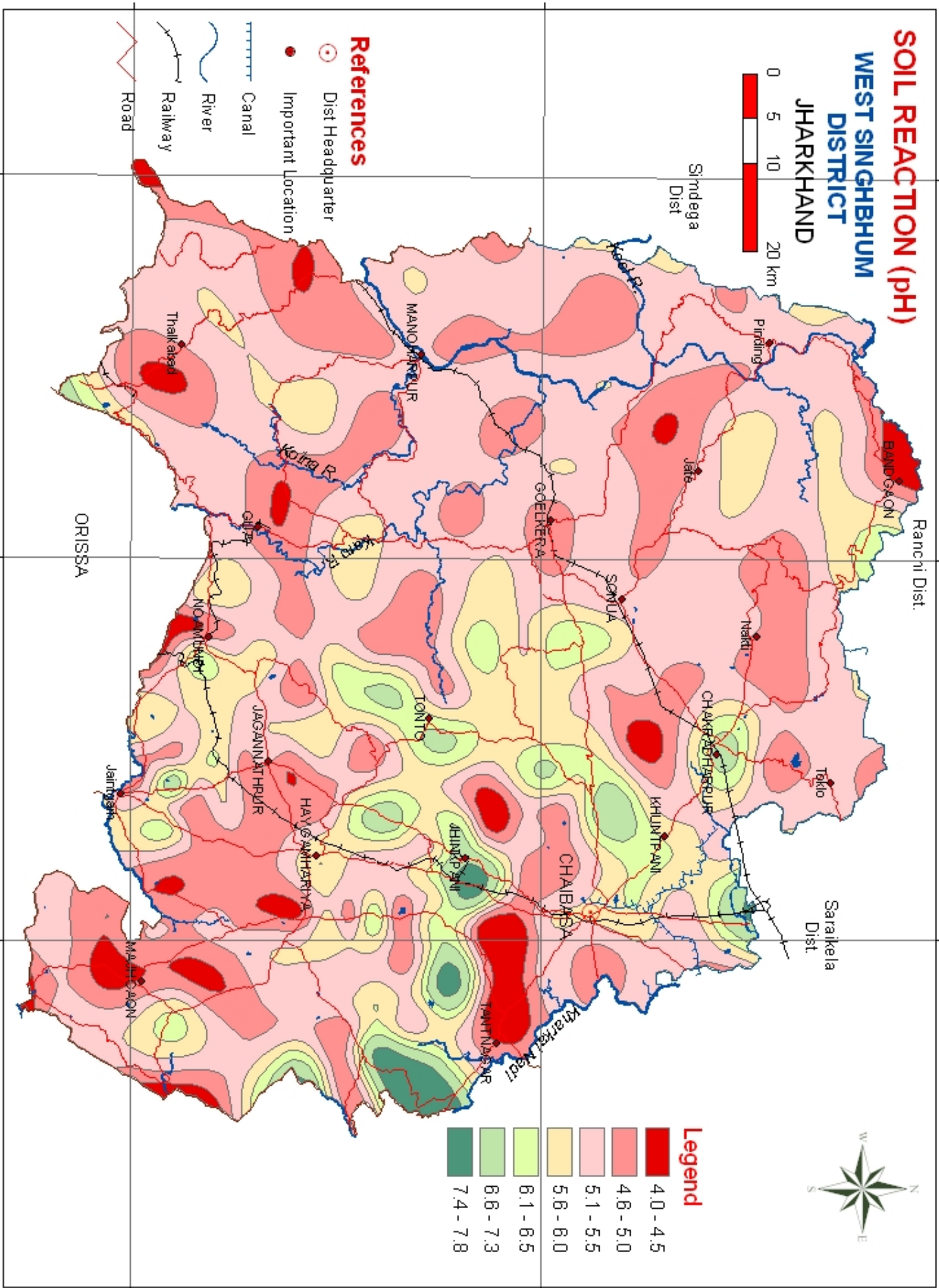
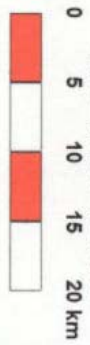


Fig. 2

SOILS

WEST SINGHBHUM DISTRICT

JHARKHAND



LEGEND

20	52	59
36	53	64
44	54	67
48	55	70
49	56	71
50	57	73
51	58	75

REFERENCES

- ⊙ Dist Headquarter
- Important Location
- Railway
- Road
- River
- Canal

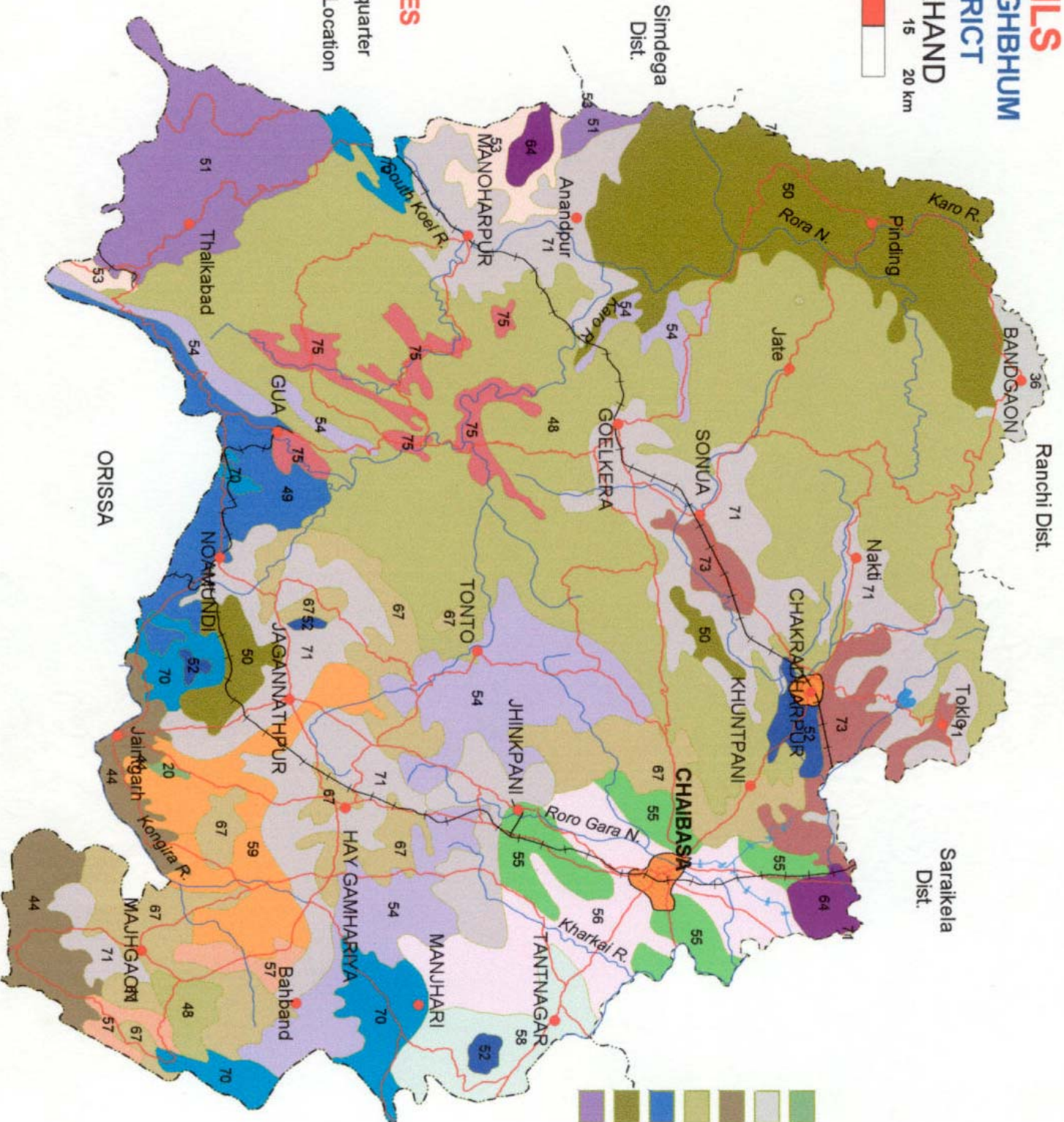


Fig. 1

AVAILABLE BORON

WEST SINGBHM DISTRICT JHARKHAND



References

- Dist Headquarter
- Important Location
- ▬ Canal
- ▬ River
- ▬ Railway
- ▬ Road

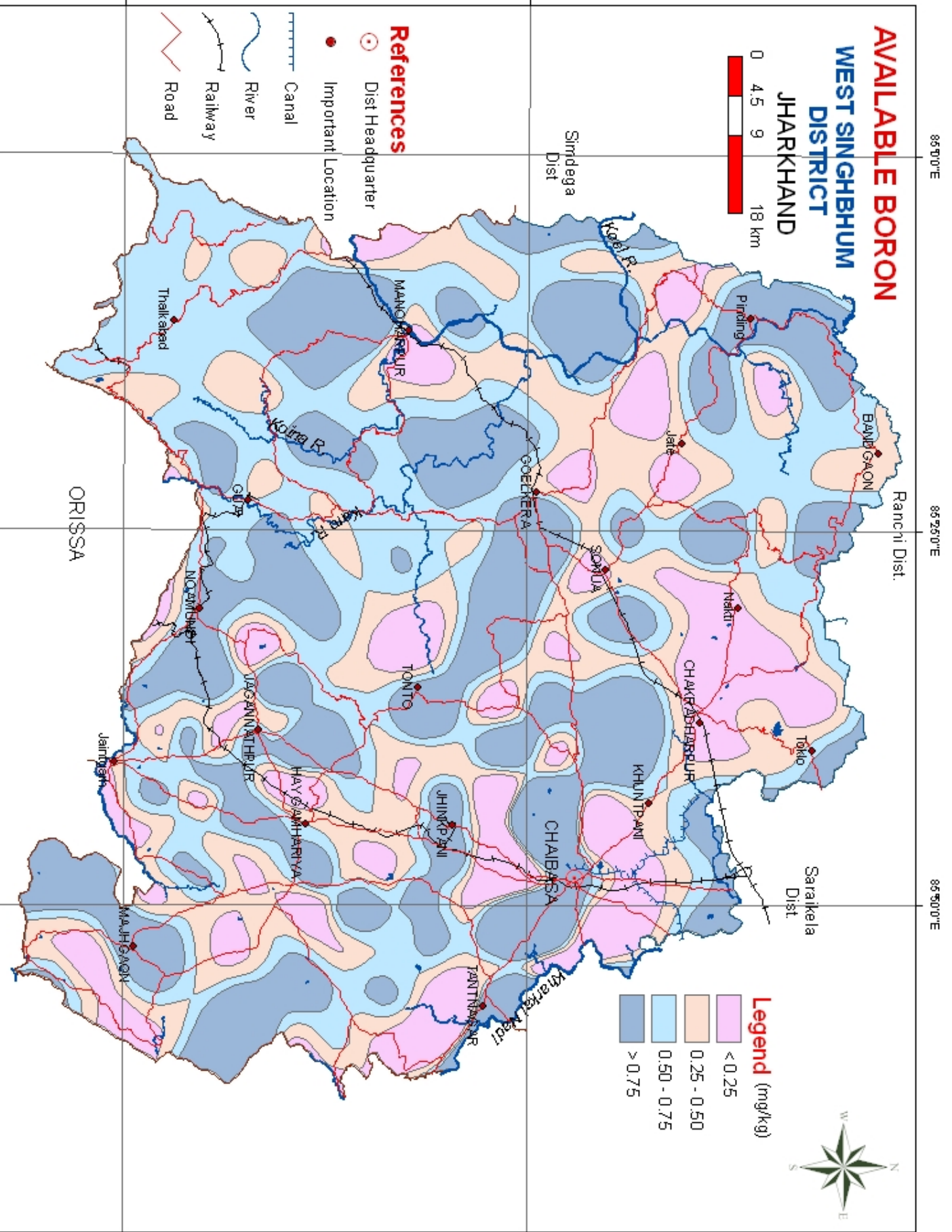
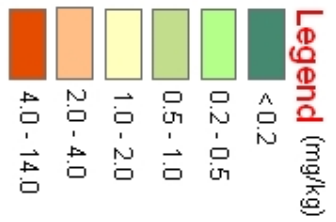


Fig. 12

AVAILABLE COPPER

WEST SINGBHM DISTRICT JHARKHAND



References

- Dist Headquarter
- Important Location
- ▬ Canal
- ▬ River
- ▬ Railway
- ▬ Road

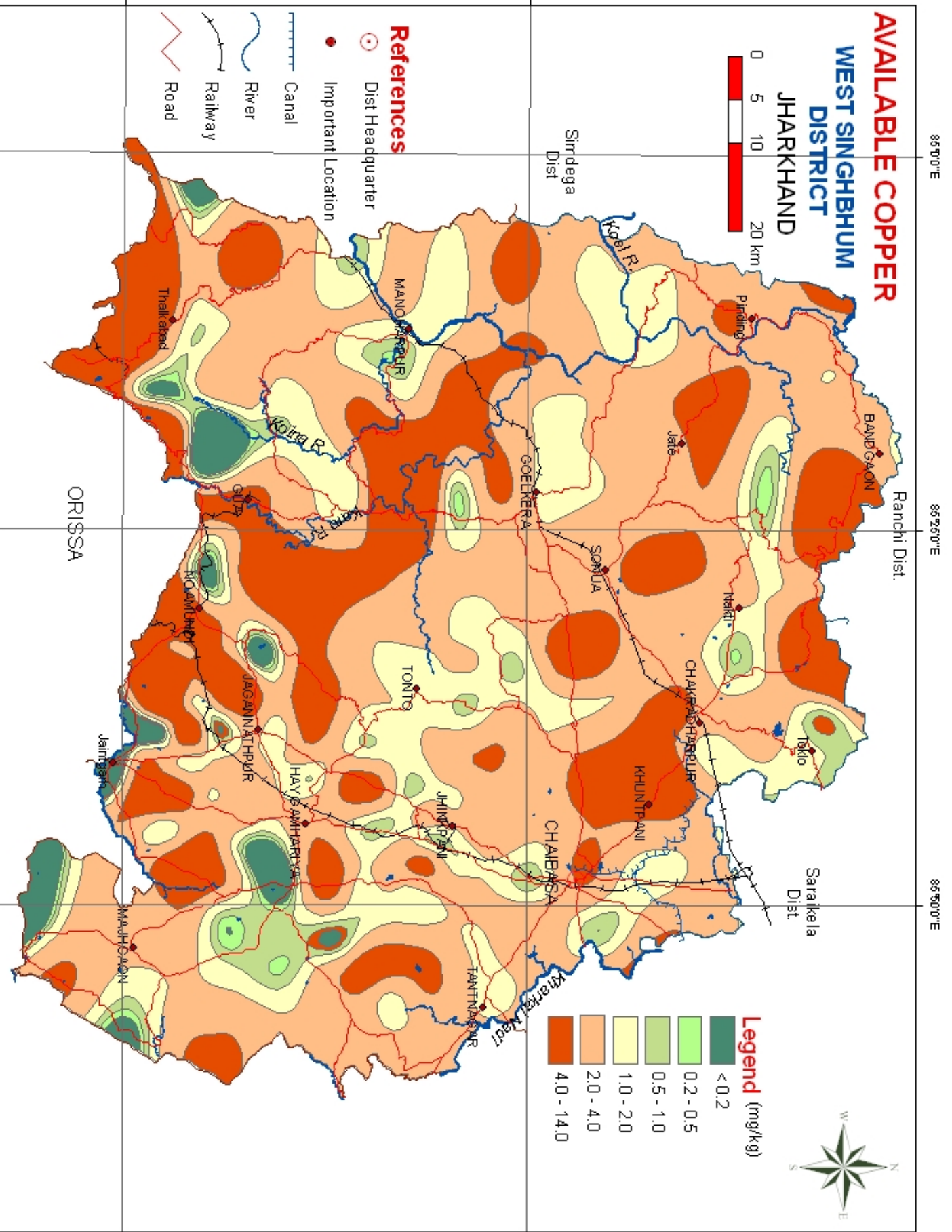


Fig. 11

AVAILABLE IRON

WEST SINGBHMUM DISTRICT JHARKHAND



References

- Dist Headquarter
- Important Location

- Canal
- River
- Railway
- Road

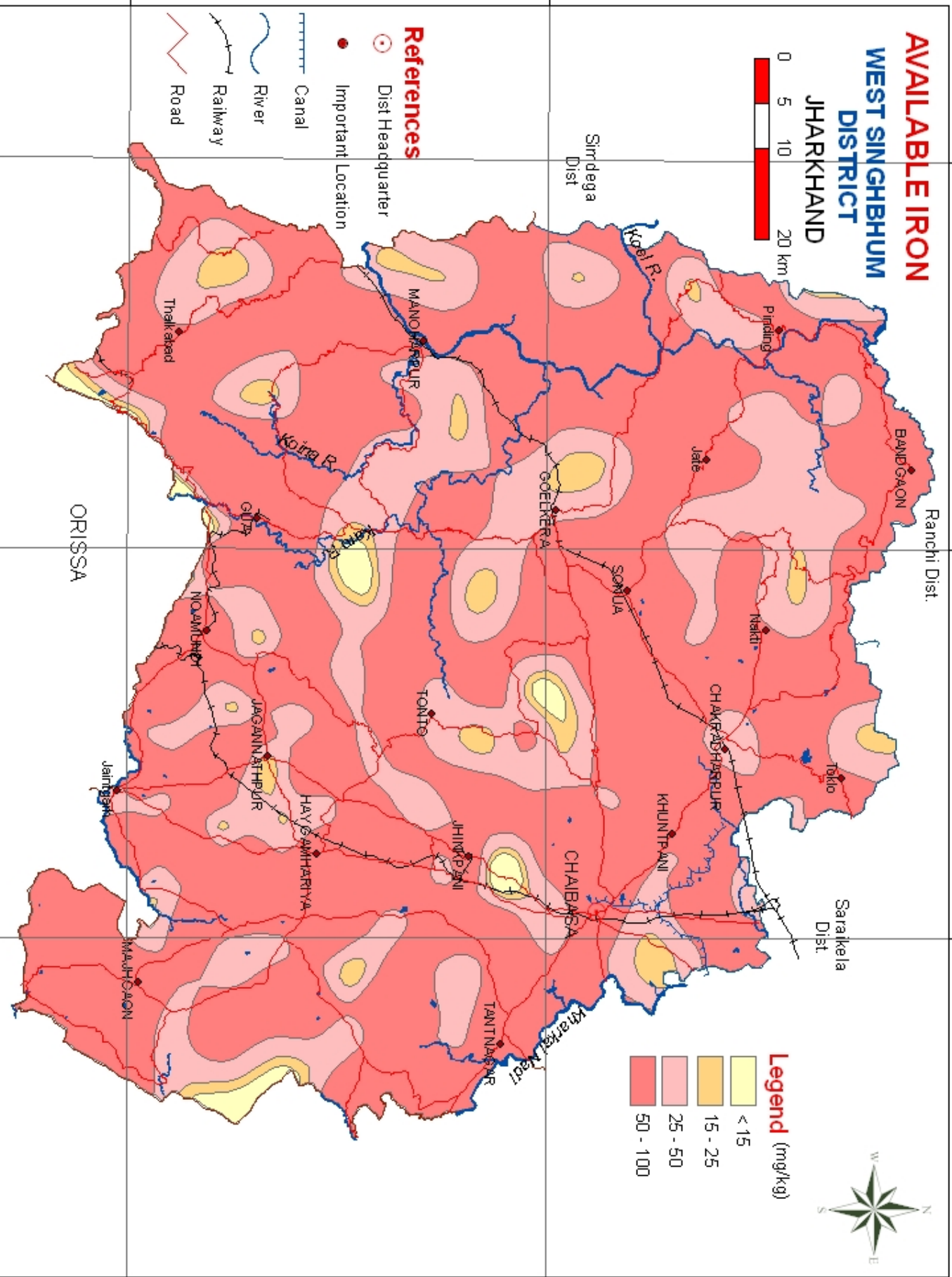


Fig. 8

AVAILABLE POTASSIUM

WEST SINGBHMUM DISTRICT JHARKHAND



References

- Dist Headquarter
- Important Location

- ▬ Canal
- ~ River
- Railway
- Road

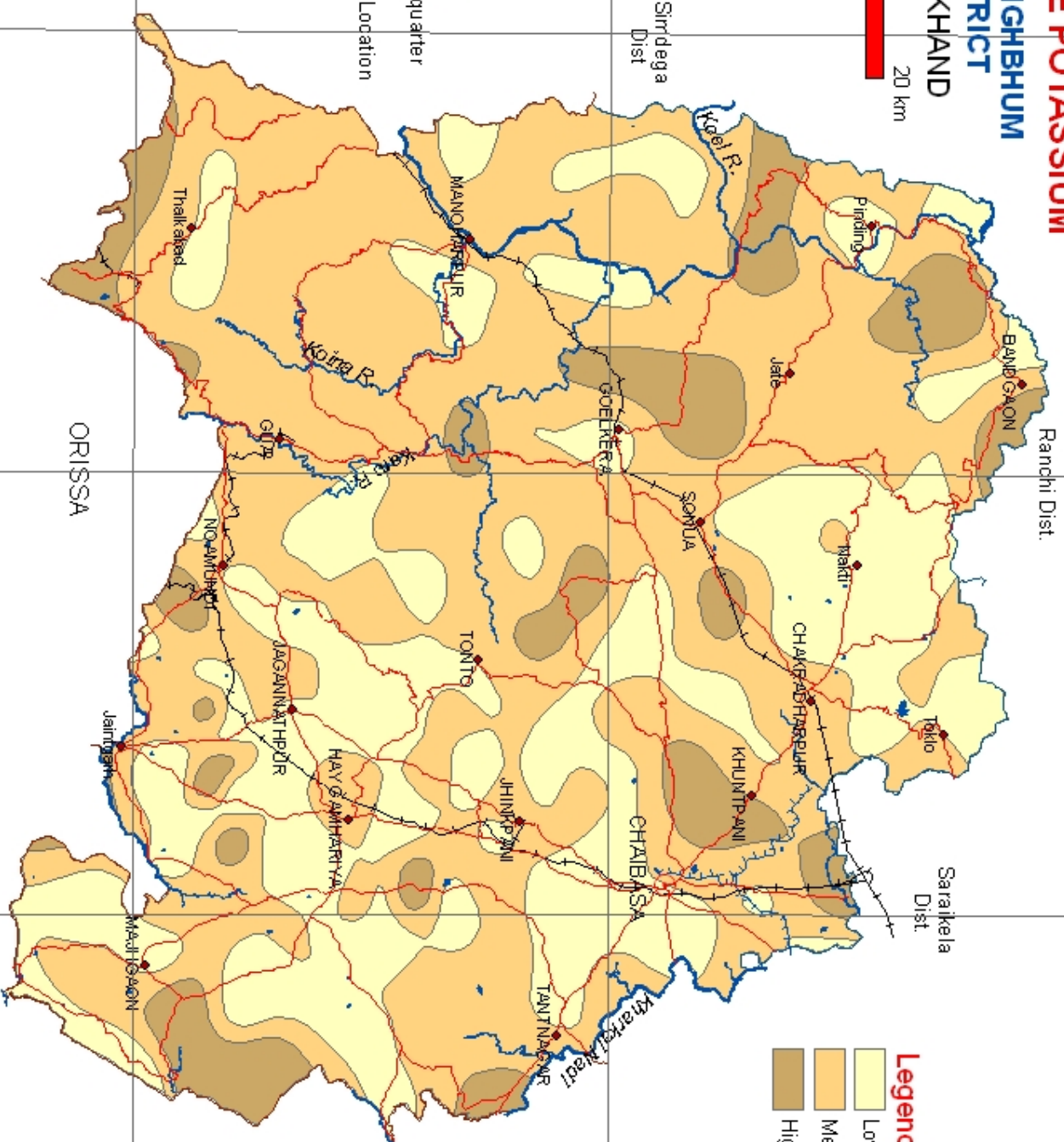
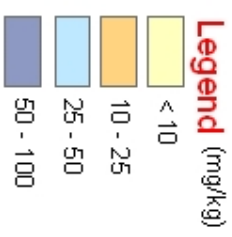
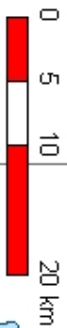


Fig. 6

AVAILABLE MANGANESE

WEST SINGBHUM DISTRICT JHARKHAND



References

- Dist Headquarter
- Important Location

- Canal
- River
- Railway
- Road

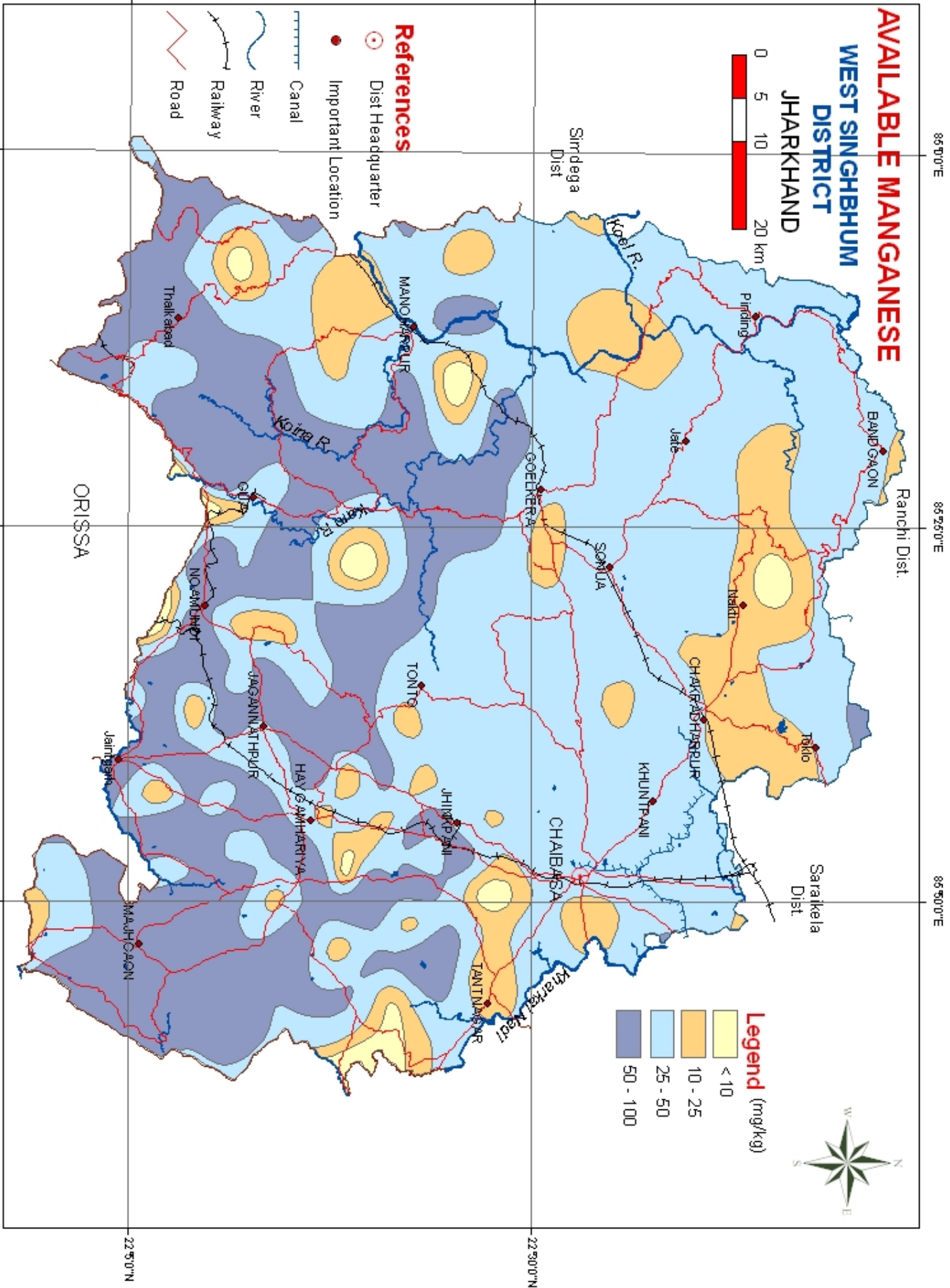


Fig. 9

AVAILABLE NITROGEN

WEST SINGBHMUM DISTRICT

JHARKHAND



References

- Dist Headquarter
- Important Location
- Canal
- River
- Railway
- Road

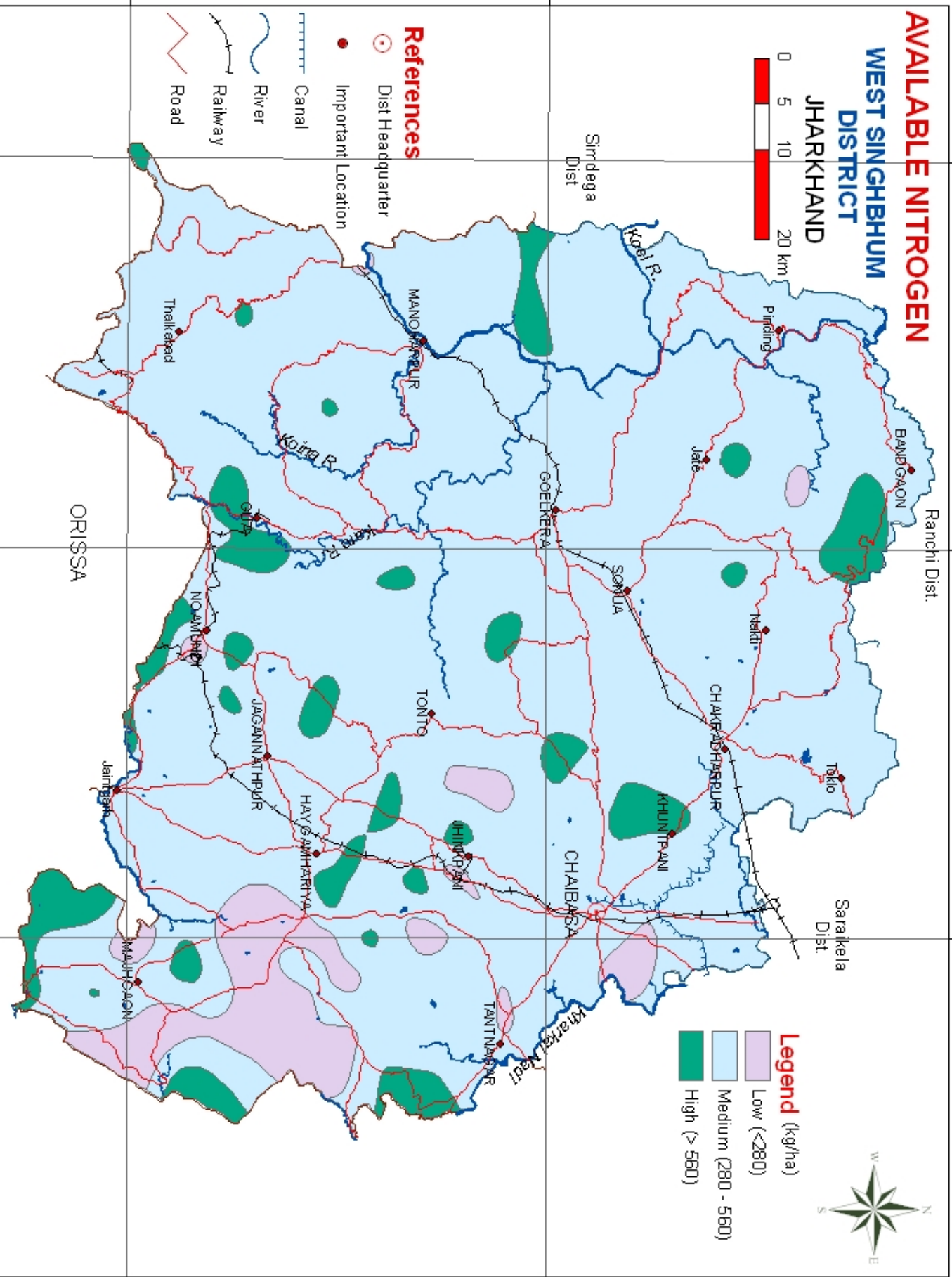


Fig. 4

AVAILABLE PHOSPHOROUS

WEST SINGBHMUM DISTRICT JHARKHAND



References

- Dist Headquarter
- Important Location

- ▬ Canal
- ▬ River
- ▬ Railway
- ▬ Road

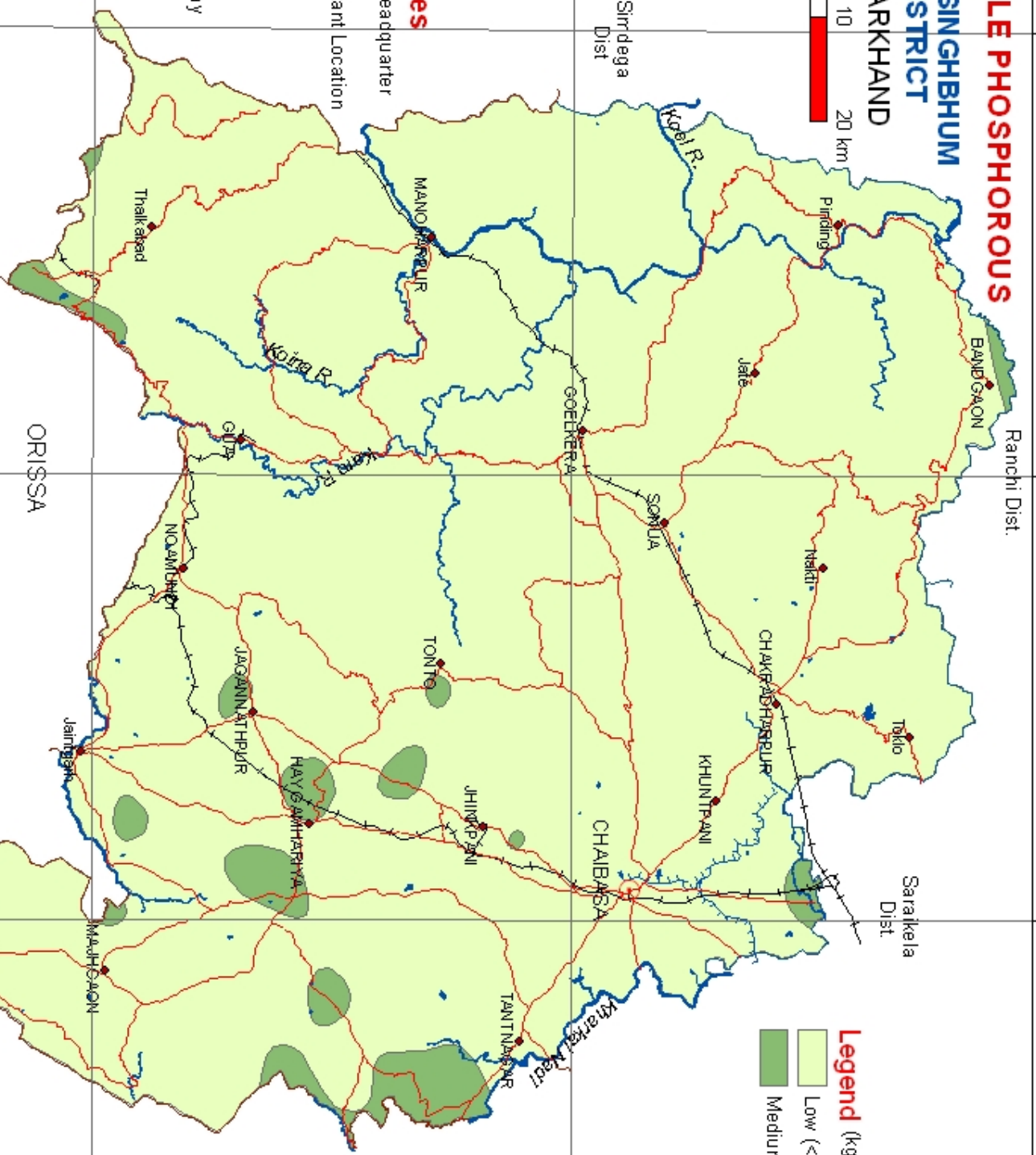


Fig. 5

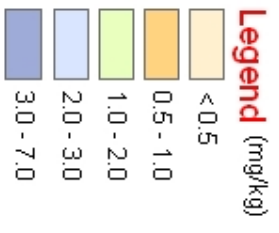
86°0'0"E

86°25'0"E

86°50'0"E

AVAILABLE ZINC

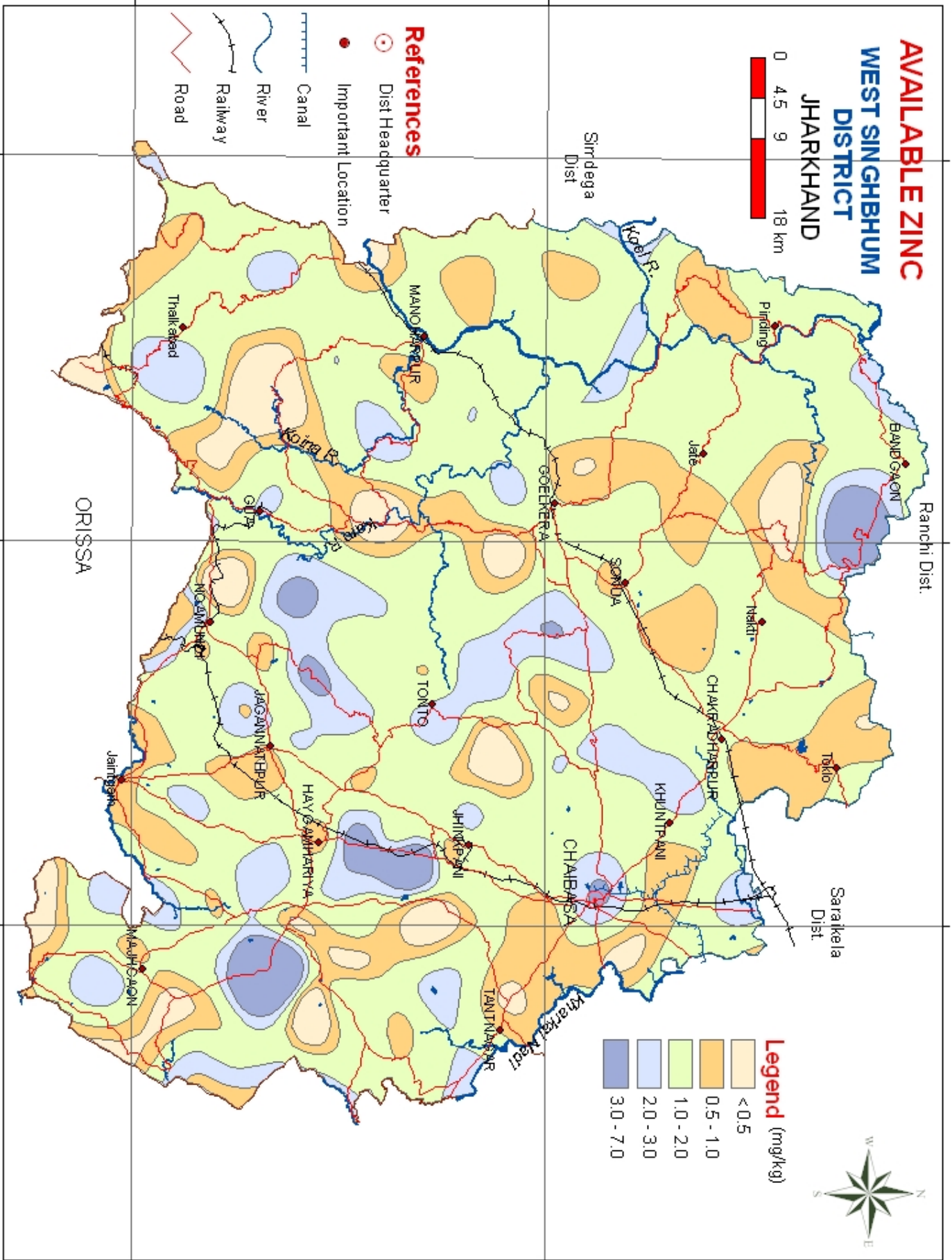
WEST SINGBHMUM DISTRICT JHARKHAND



References

- Dist Headquarter
- Important Location

- Canal
- River
- Railway
- Road



ORISSA

Fig. 10

86°0'0"E

86°25'0"E

86°50'0"E

22°30'0"N

22°50'0"N

22°30'0"N

22°50'0"N

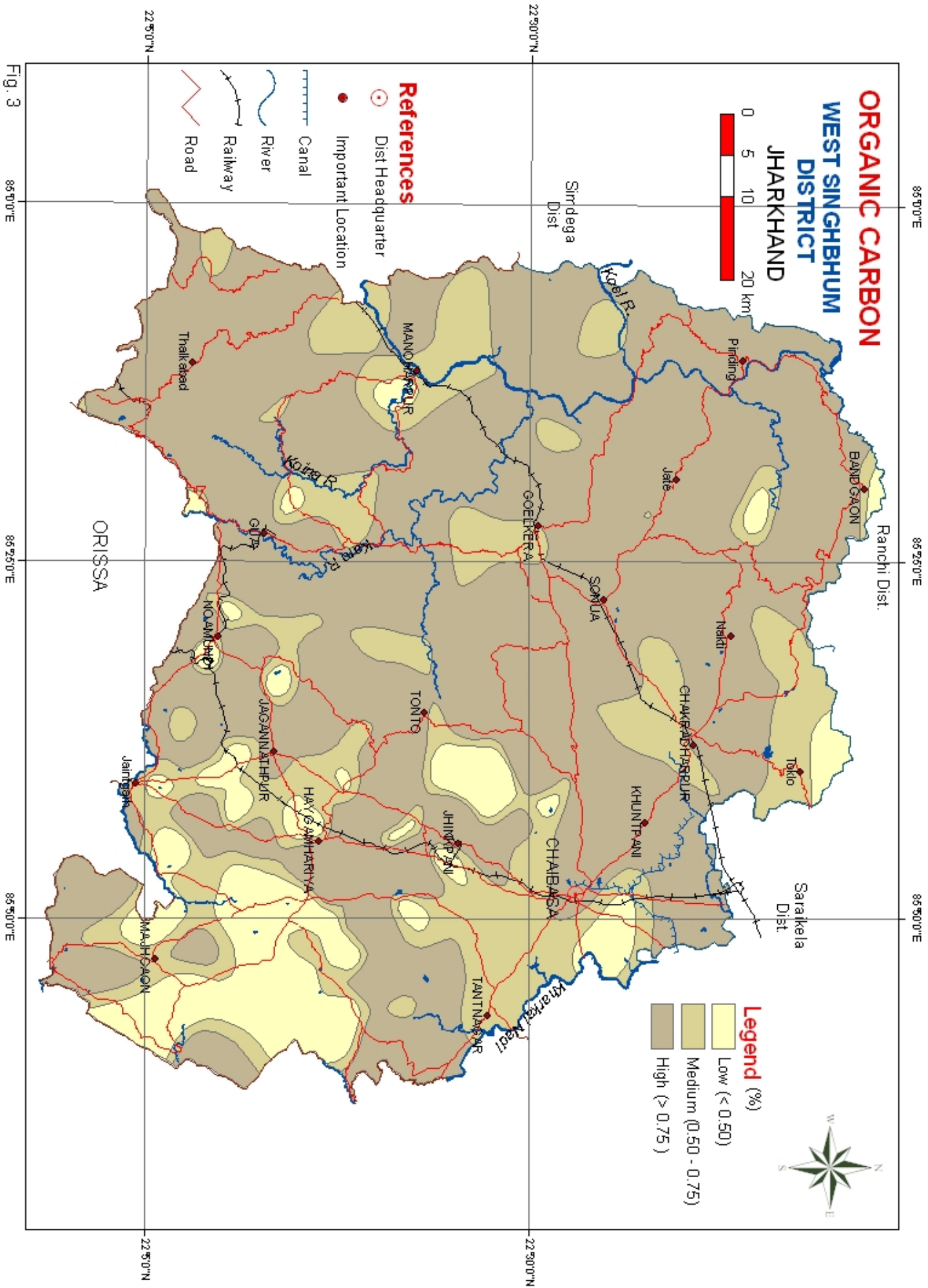


Fig. 3