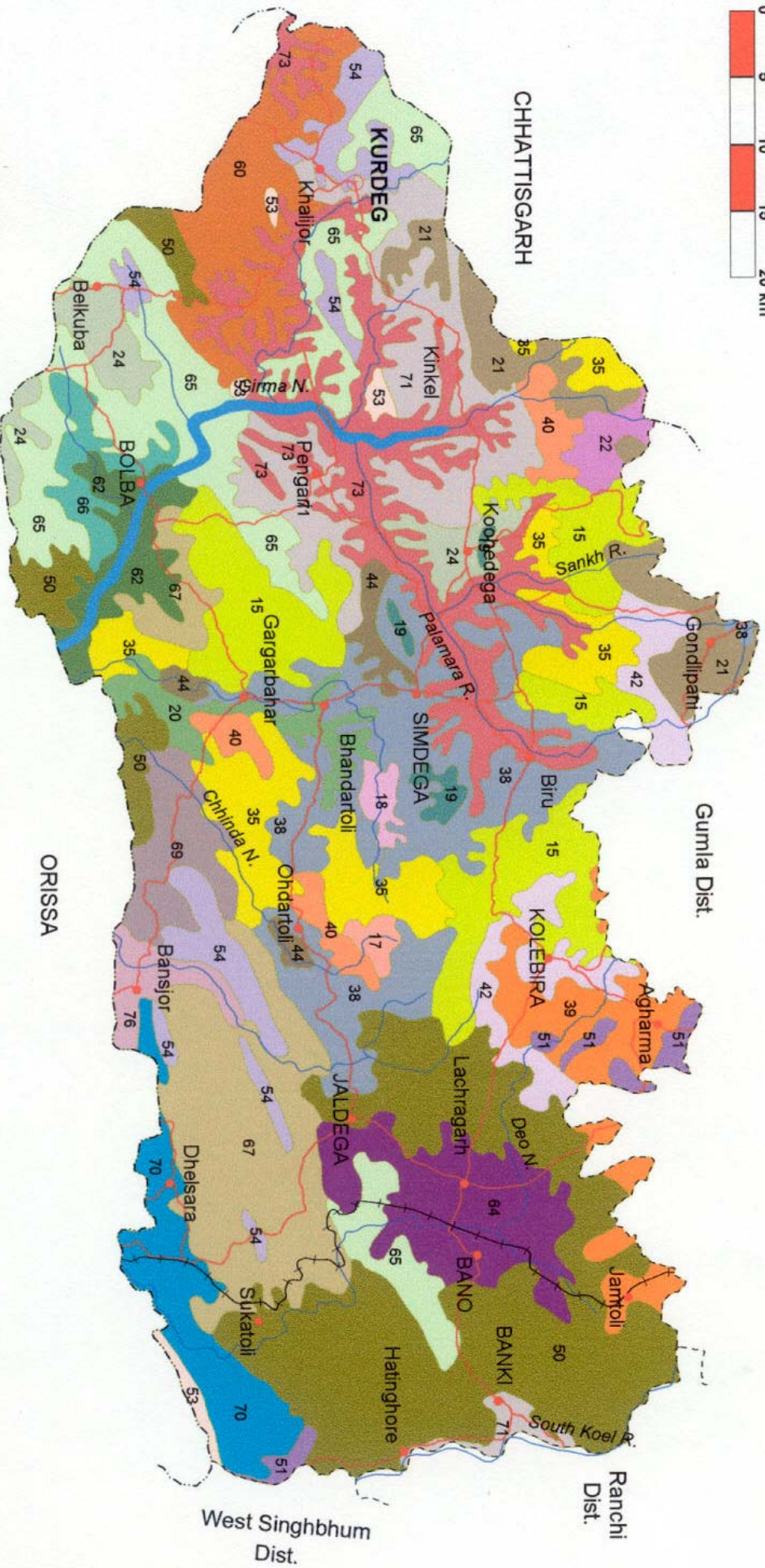
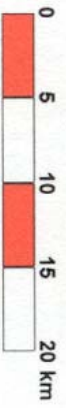


Fig. 2

# SOILS

## SIMDEGA DISTRICT

### JHARKHAND



### LEGEND

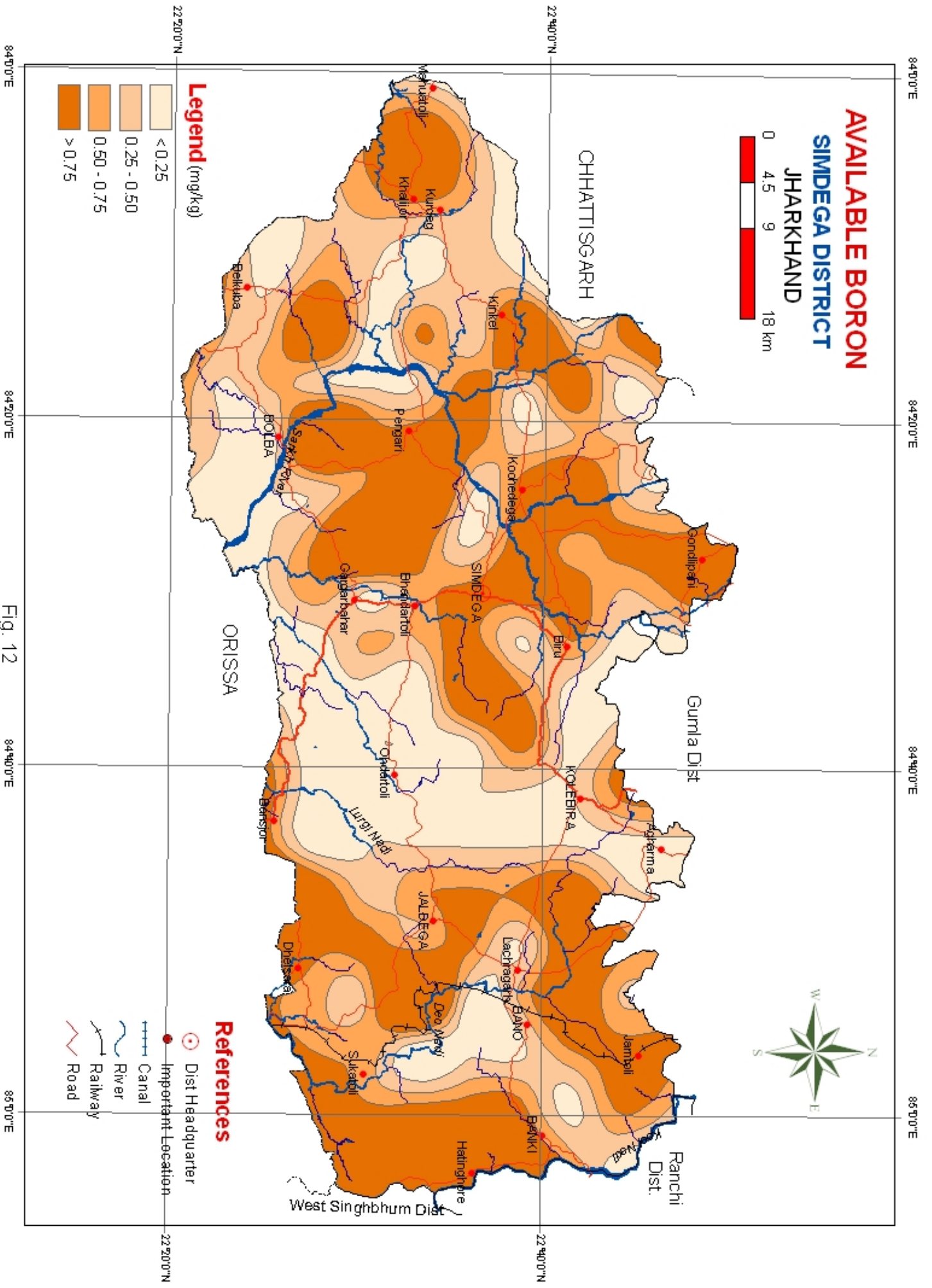
15	22	42	60	69
17	24	44	62	70
18	35	50	64	71
19	38	51	65	73
20	39	53	66	76
21	40	54	67	

### REFERENCES

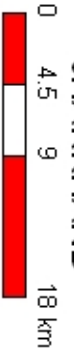
- Dist Headquarter
- Important Location
- ⚡ Railway
- ~ River
- ⚡ Road

Fig - 1





**AVAILABLE BORON**  
**SIMDEGA DISTRICT**  
**JHARKHAND**



**Legend (mg/kg)**

Light yellow	< 0.25
Light orange	0.25 - 0.50
Orange	0.50 - 0.75
Dark orange	> 0.75

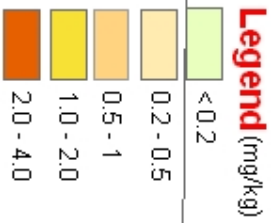
**References**

Red circle with dot	Dist Headquarter
Red dot	Important Location
Blue line with cross-ticks	Canal
Blue line	River
Black line with cross-ticks	Railway
Red line	Road

Fig. 12

# AVAILABLE COPPER

## SIMDEGA DISTRICT JHARKHAND

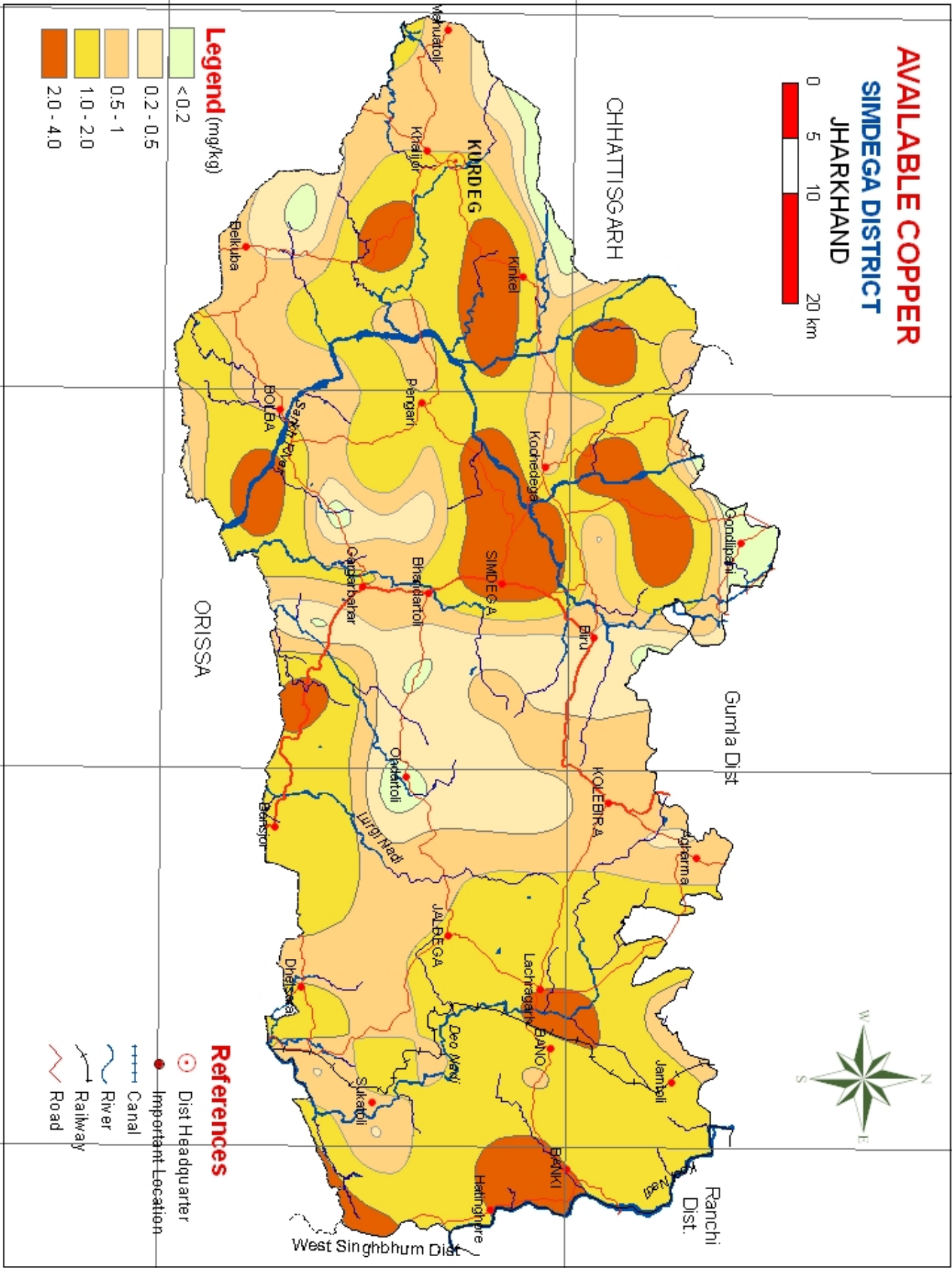
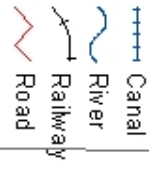
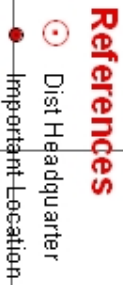


**Legend** (mg/kg)

22°20'0"N

22°40'0"N

84°0'0"E 84°20'0"E 84°40'0"E 85°0'0"E

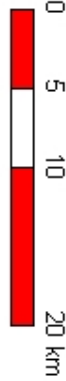


84°0'0"E 84°20'0"E 84°40'0"E 85°0'0"E

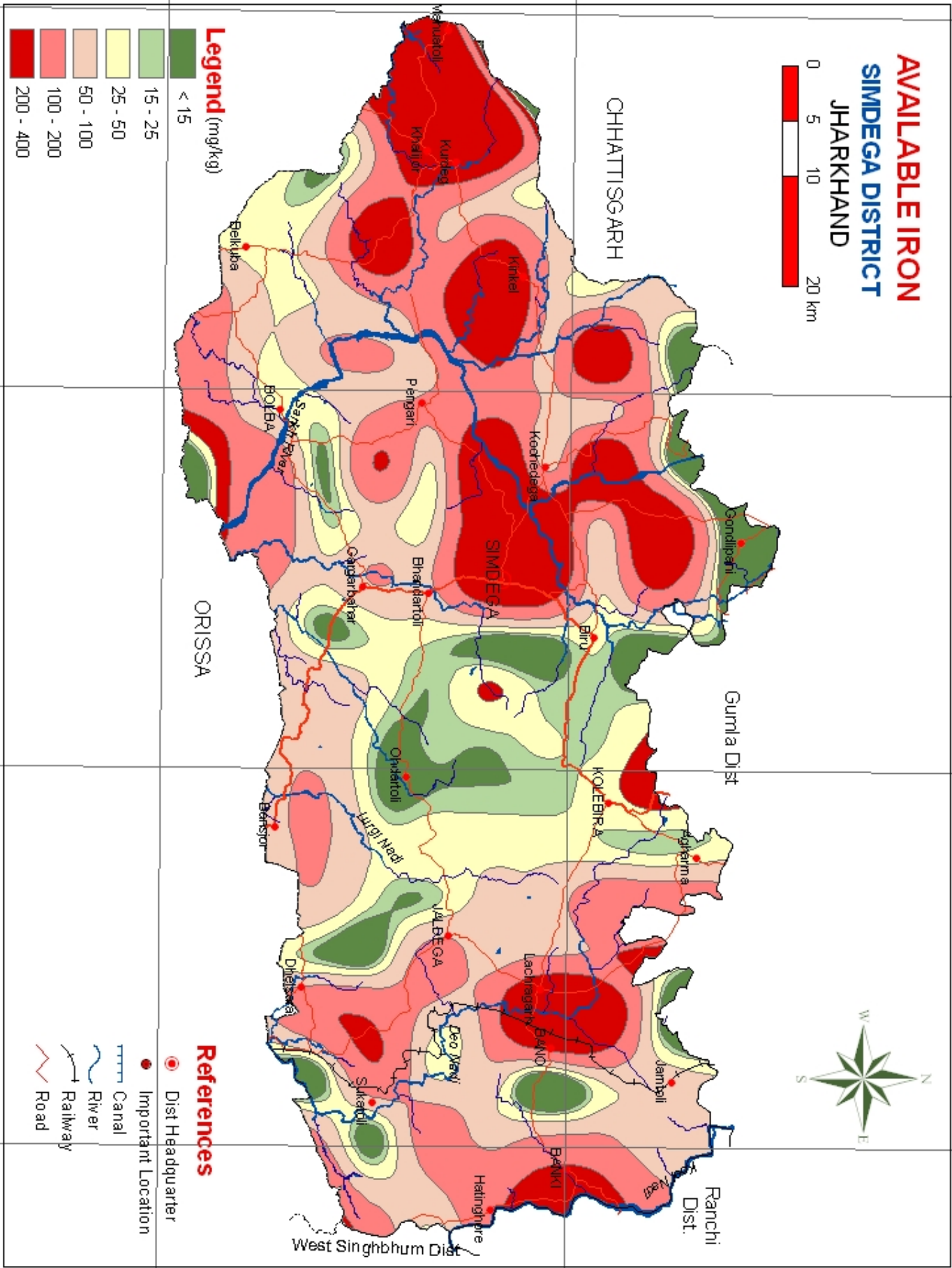
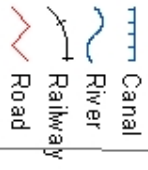
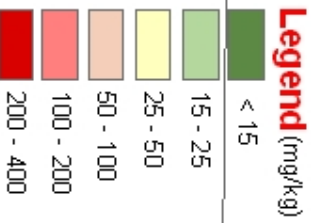
Fig. 11

84°0'0"E 84°20'0"E 84°40'0"E 85°0'0"E

# AVAILABLE IRON SIMDEGA DISTRICT JHARKHAND



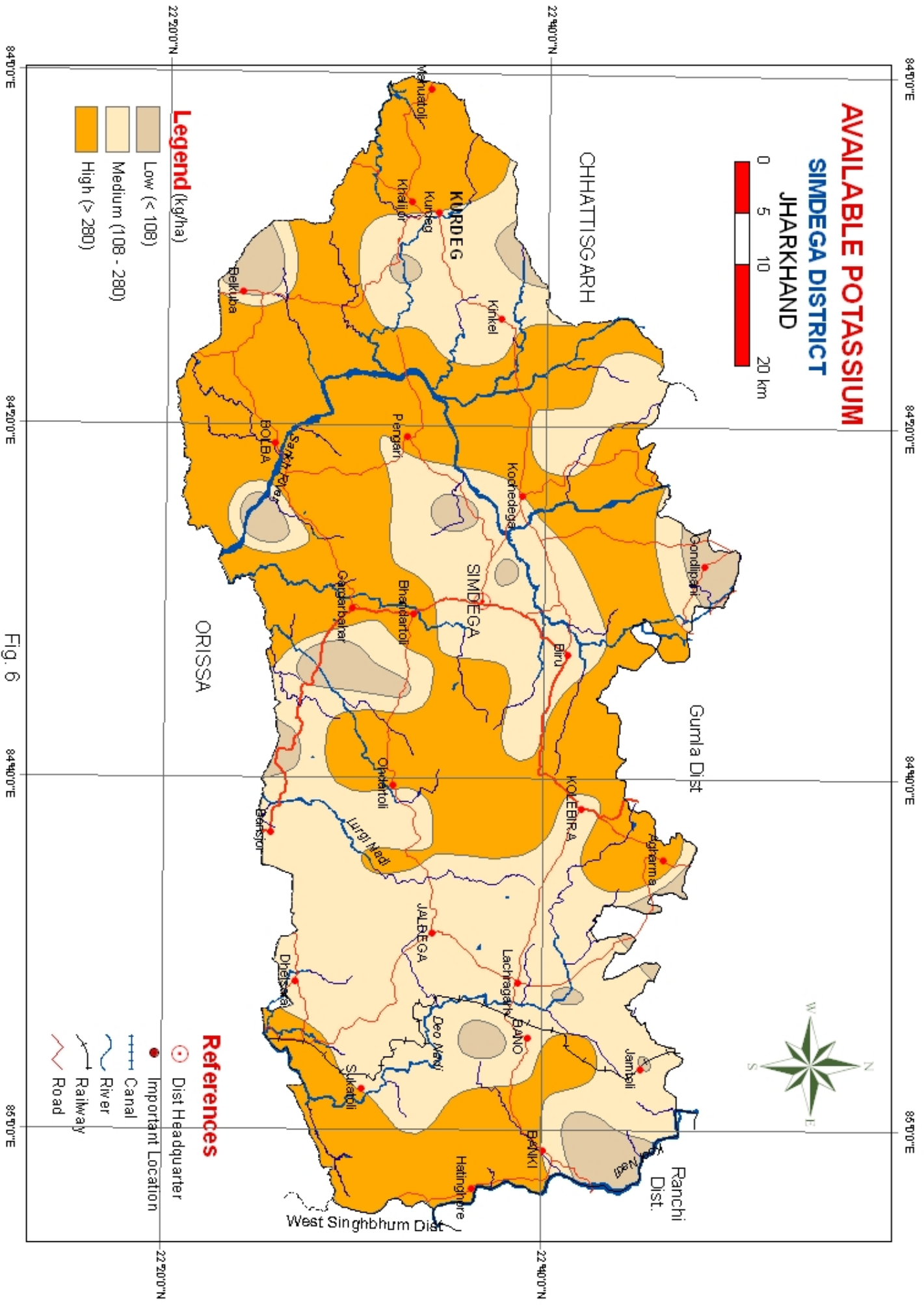
22°20'0"N 22°40'0"N



84°0'0"E 84°20'0"E 84°40'0"E 85°0'0"E

Fig 8

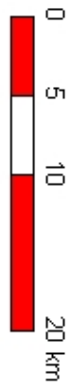




# AVAILABLE POTASSIUM

**SIMDEGA DISTRICT**

**JHARKHAND**



## Legend (kg/ha)

- Low (< 108)
- Medium (108 - 280)
- High (> 280)

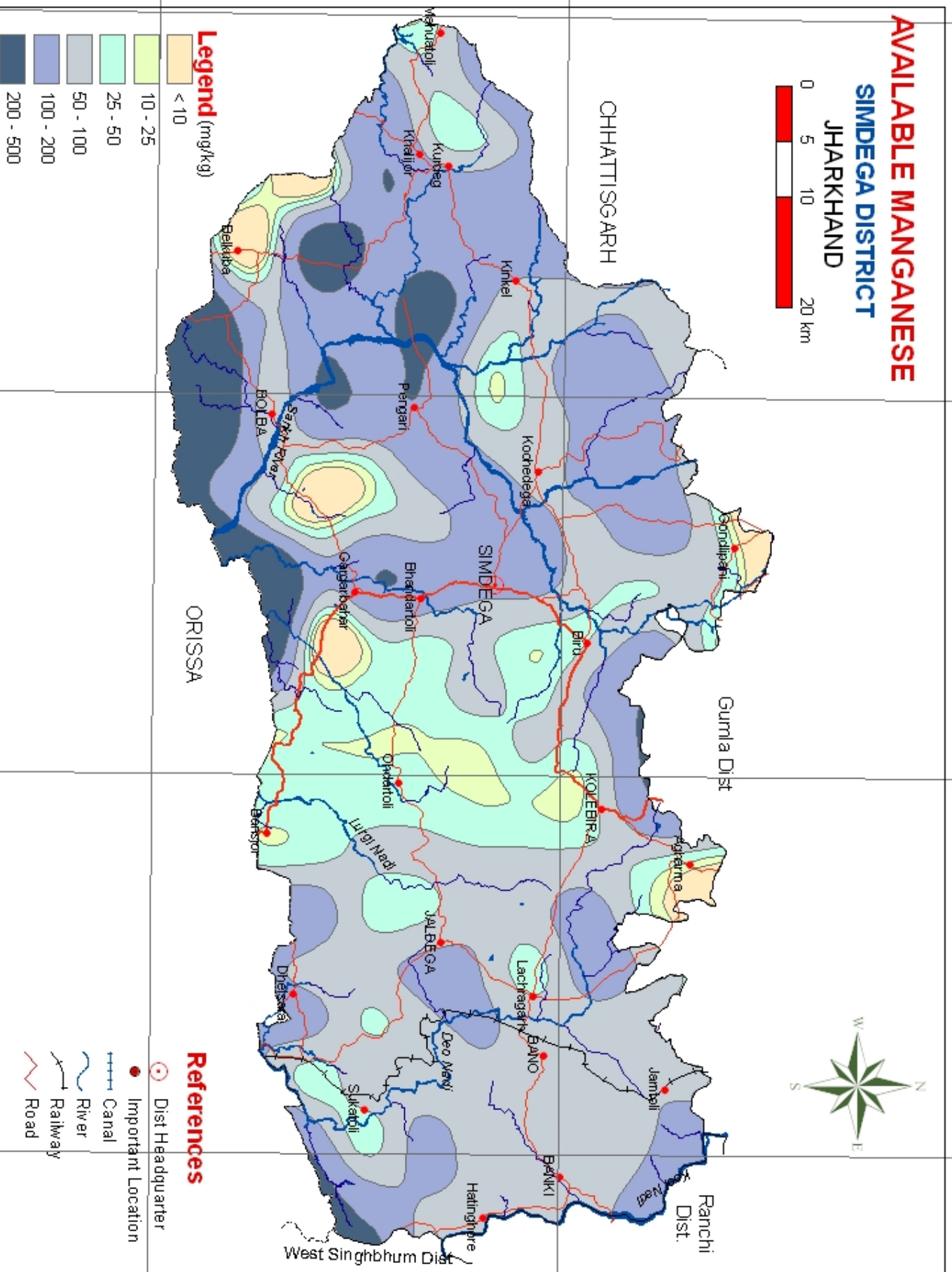
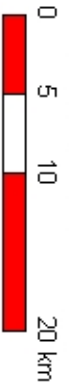
## References

- Dist Headquarter
- Important Location
- Canal
- River
- Railway
- Road

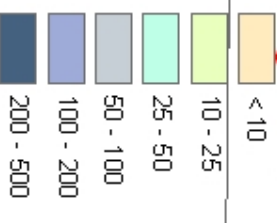
Fig. 6

# AVAILABLE MANGANESE

## SIMDEGA DISTRICT JHARKHAND



### Legend (mg/kg)



### References

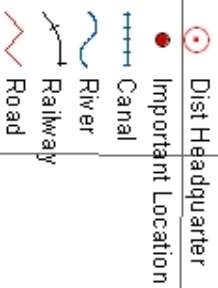


Fig. 9

# AVAILABLE NITROGEN

## SIMDEGA DISTRICT JHARKHAND

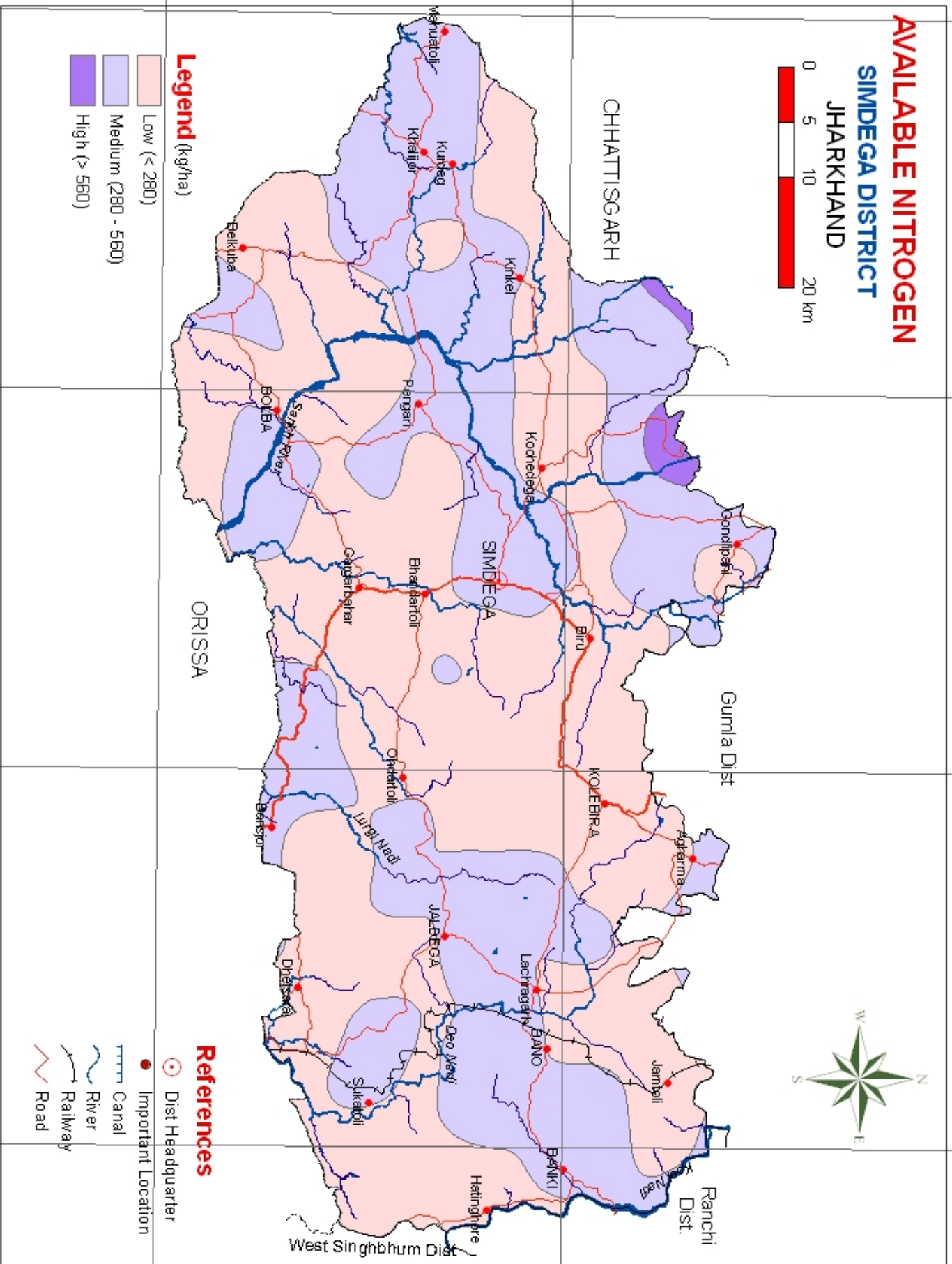
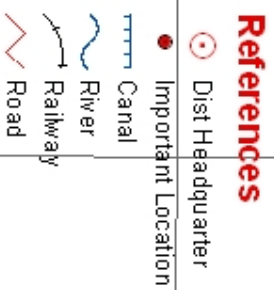
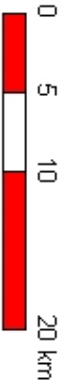


Fig. 4



# AVAILABLE PHOSPHOROUS

## SIMDEGA DISTRICT JHARKHAND

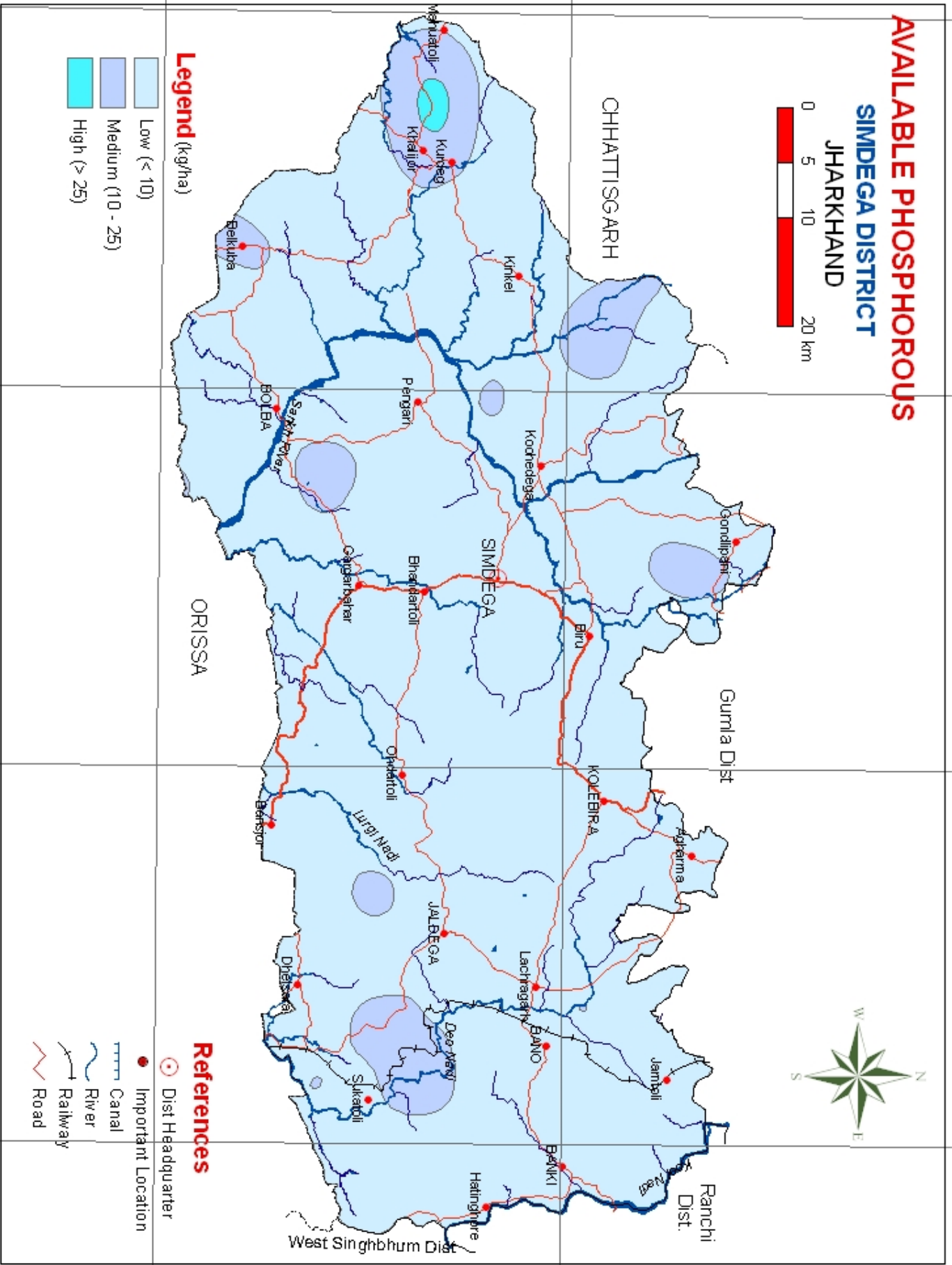
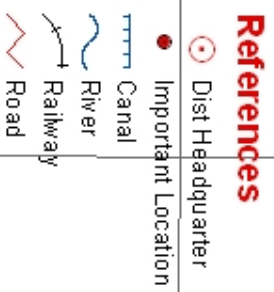
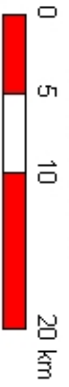


FIG. 5

# AVAILABLE SULPHUR

## SIMDEGA DISTRICT

### JHARKHAND

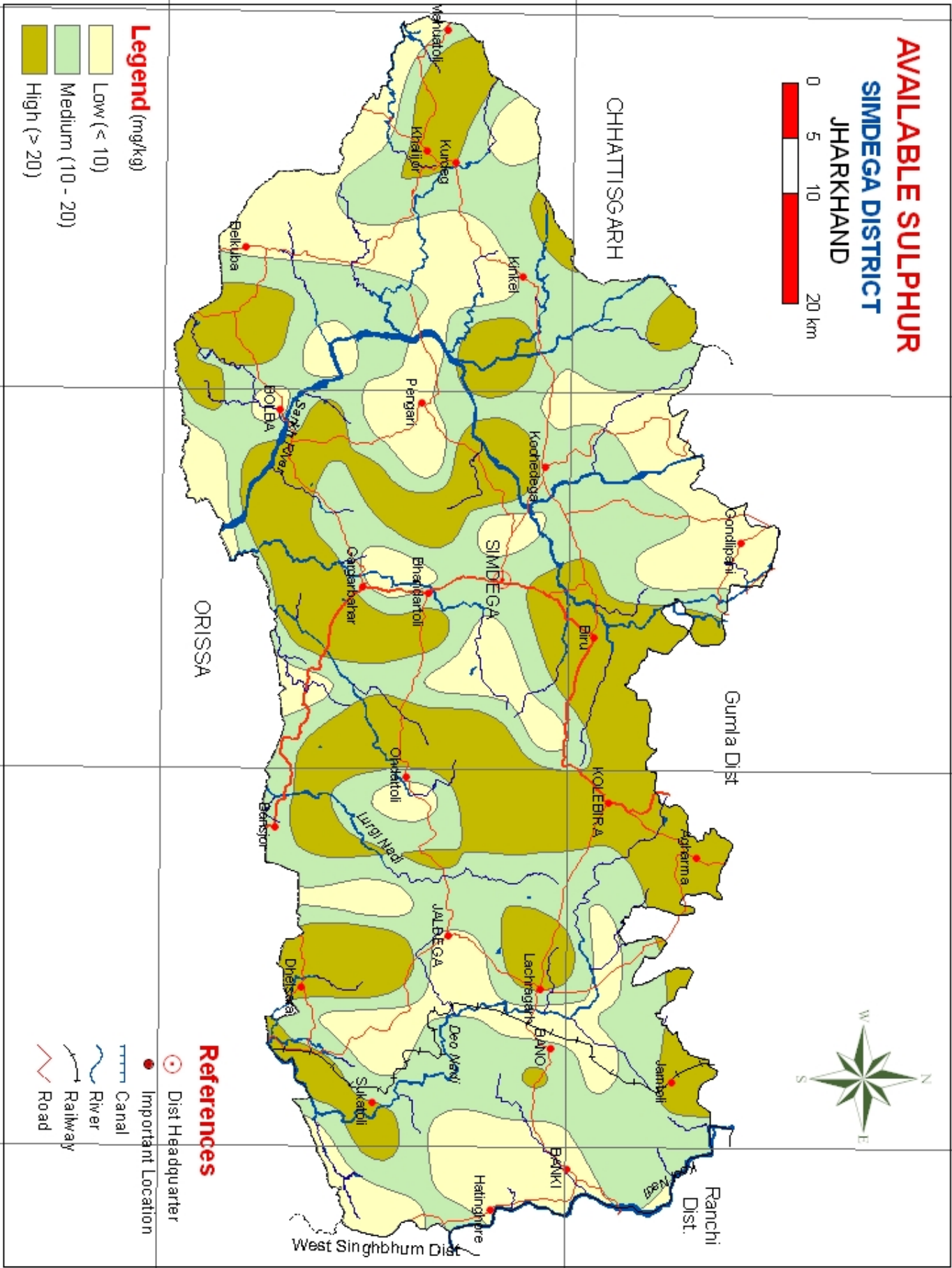
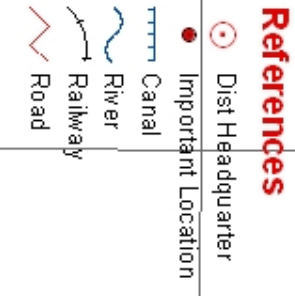
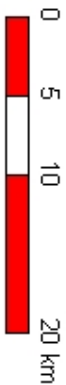


Fig. 7

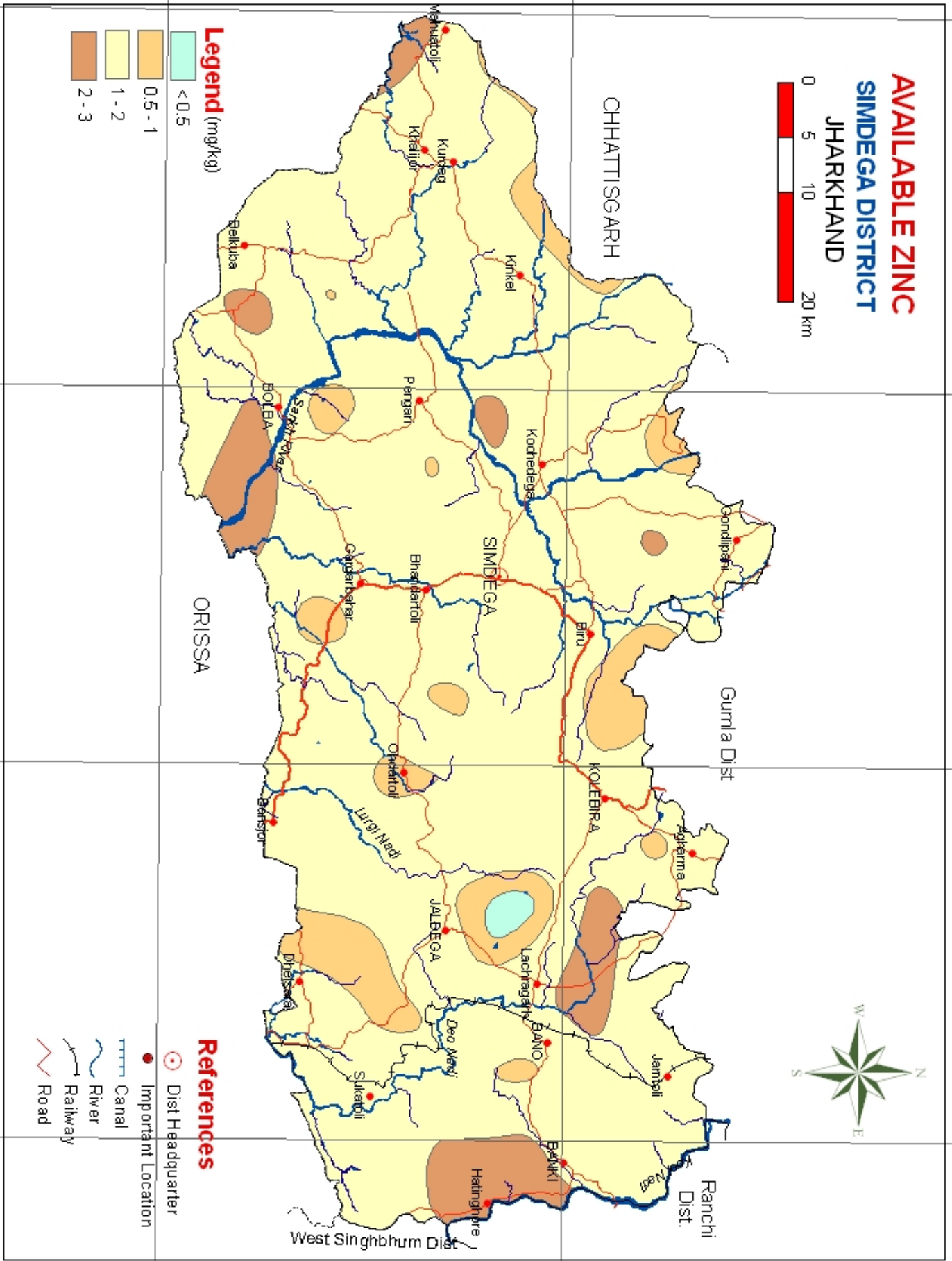
84°0'0"E

84°20'0"E

84°40'0"E

85°0'0"E

# AVAILABLE ZINC SIMDEGA DISTRICT JHARKHAND



## Legend (mg/kg)

- < 0.5
- 0.5 - 1
- 1 - 2
- 2 - 3

## References

- Dist Headquarter
- Important Location
- Canal
- River
- Railway
- Road

84°0'0"E      84°20'0"E      84°40'0"E      85°0'0"E

22°20'0"N      22°40'0"N

Fig. 10



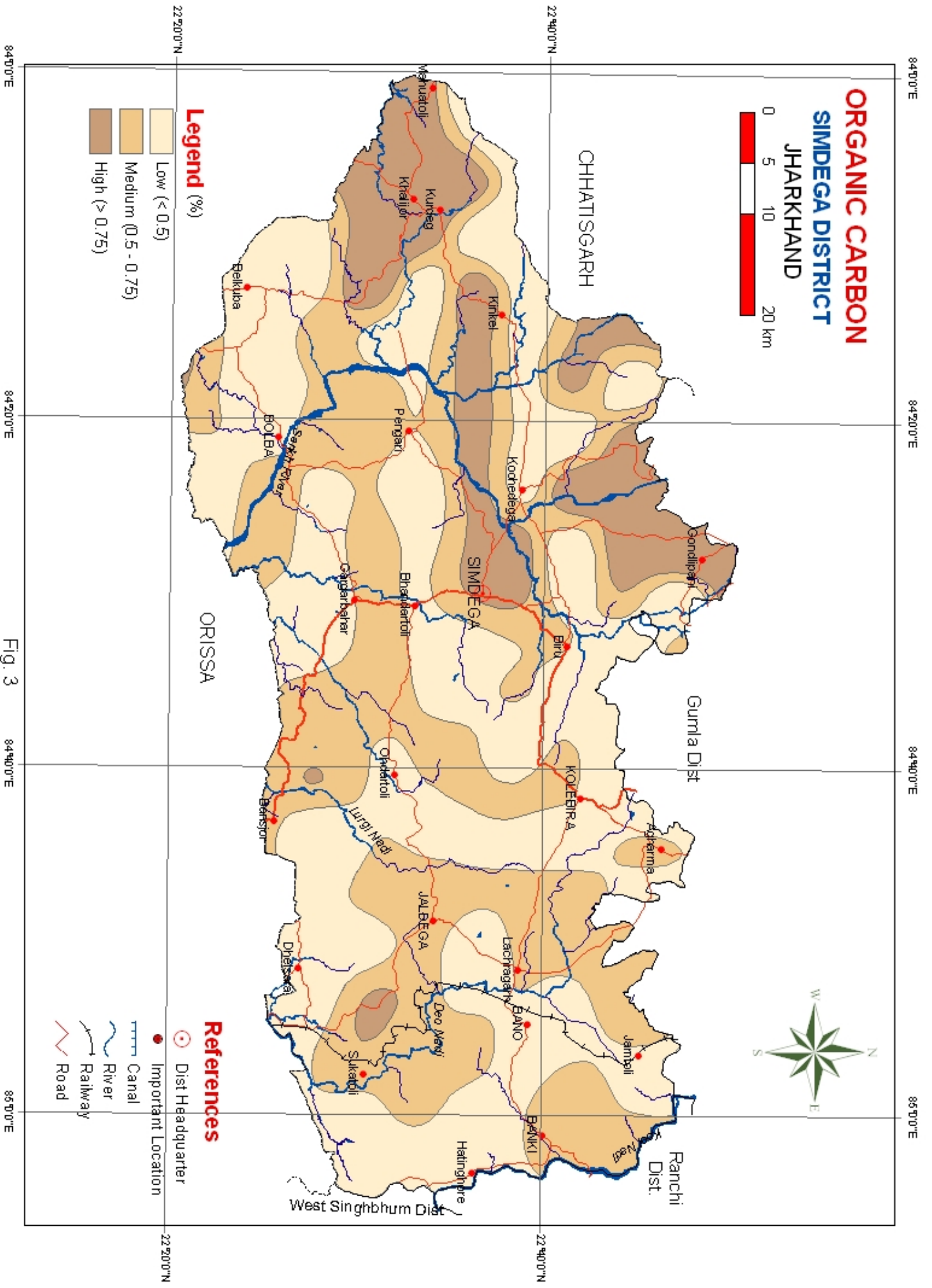


Fig. 3