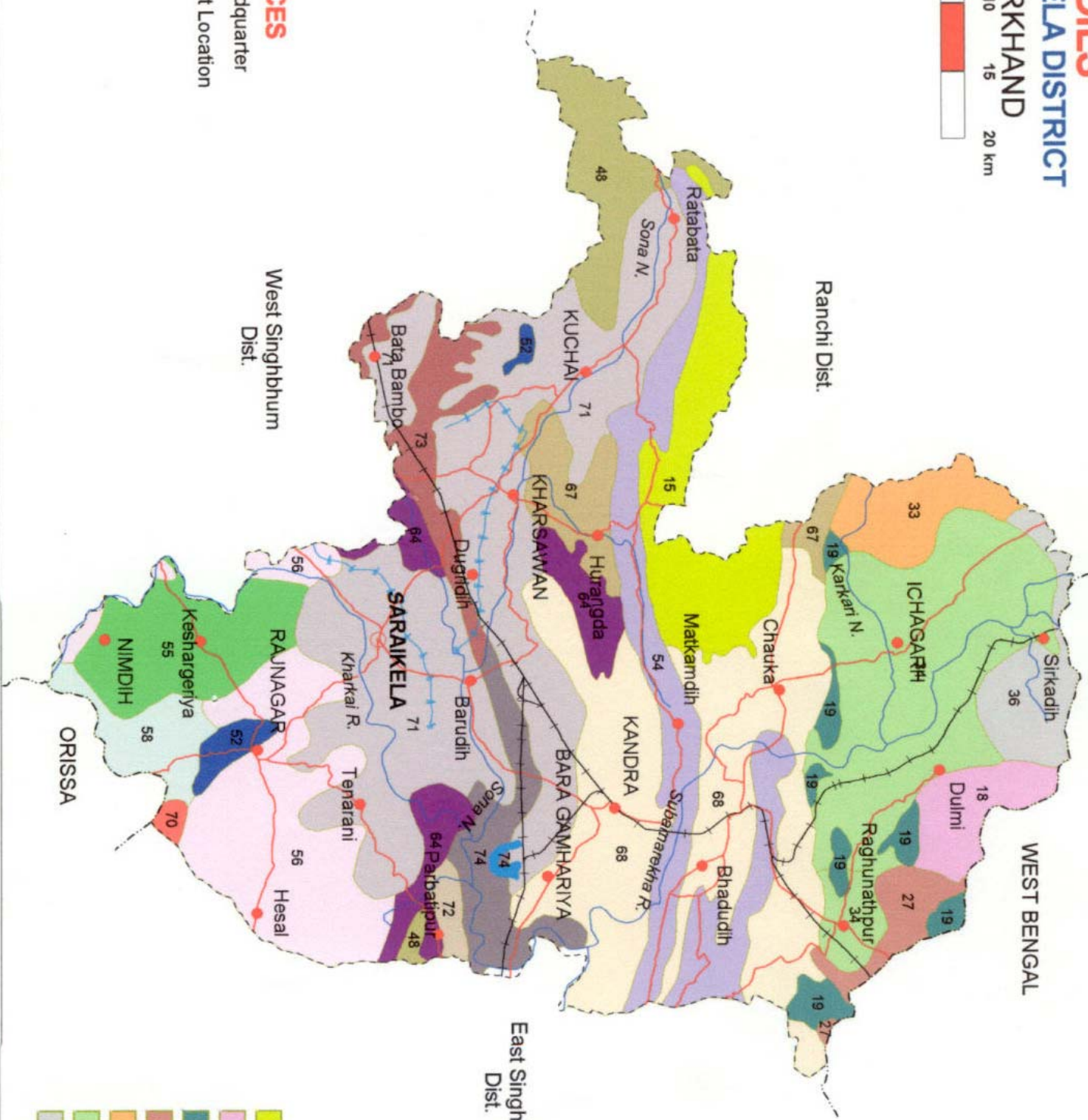
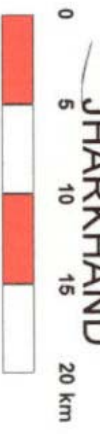


# SOILS

## SARAIKELA DISTRICT

### JHARKHAND



### REFERENCES

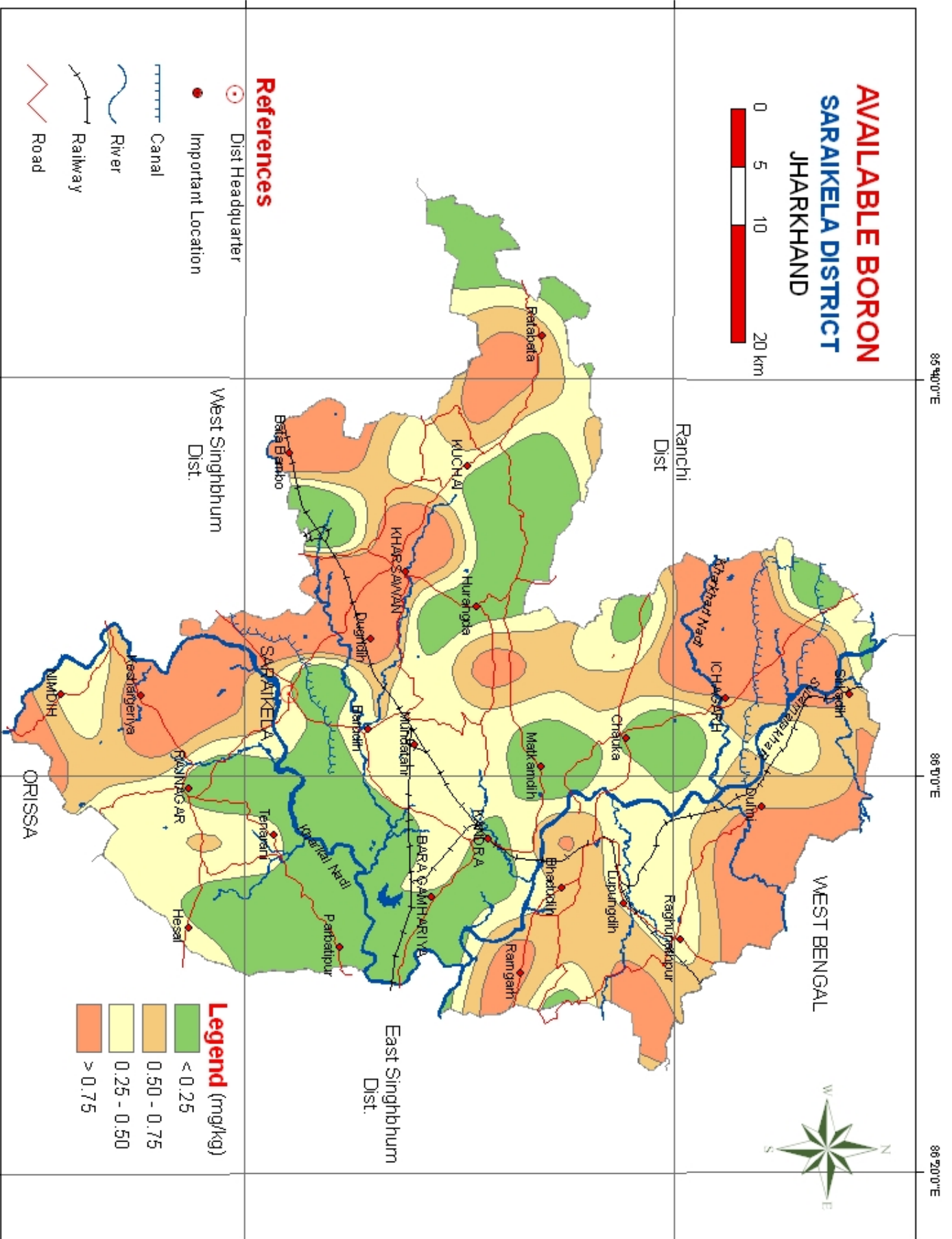
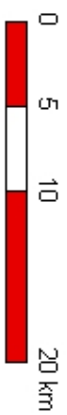
- ◊ Dist Headquarter
- Important Location
- ✈ Railway
- ⚡ Road
- ~ River

### LEGEND

15	48	67
18	52	68
19	54	70
27	55	71
33	56	72
34	58	73
36	64	74

Fig. - 1

# AVAILABLE BORON SARAIKELA DISTRICT JHARKHAND



## References

- Dist Headquarter
- Important Location
- Canal
- River
- Railway
- Road

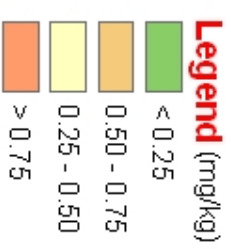


Fig. 12

86°40'E

86°10'E

86°20'E

22°40'N

22°40'N

23°0'N

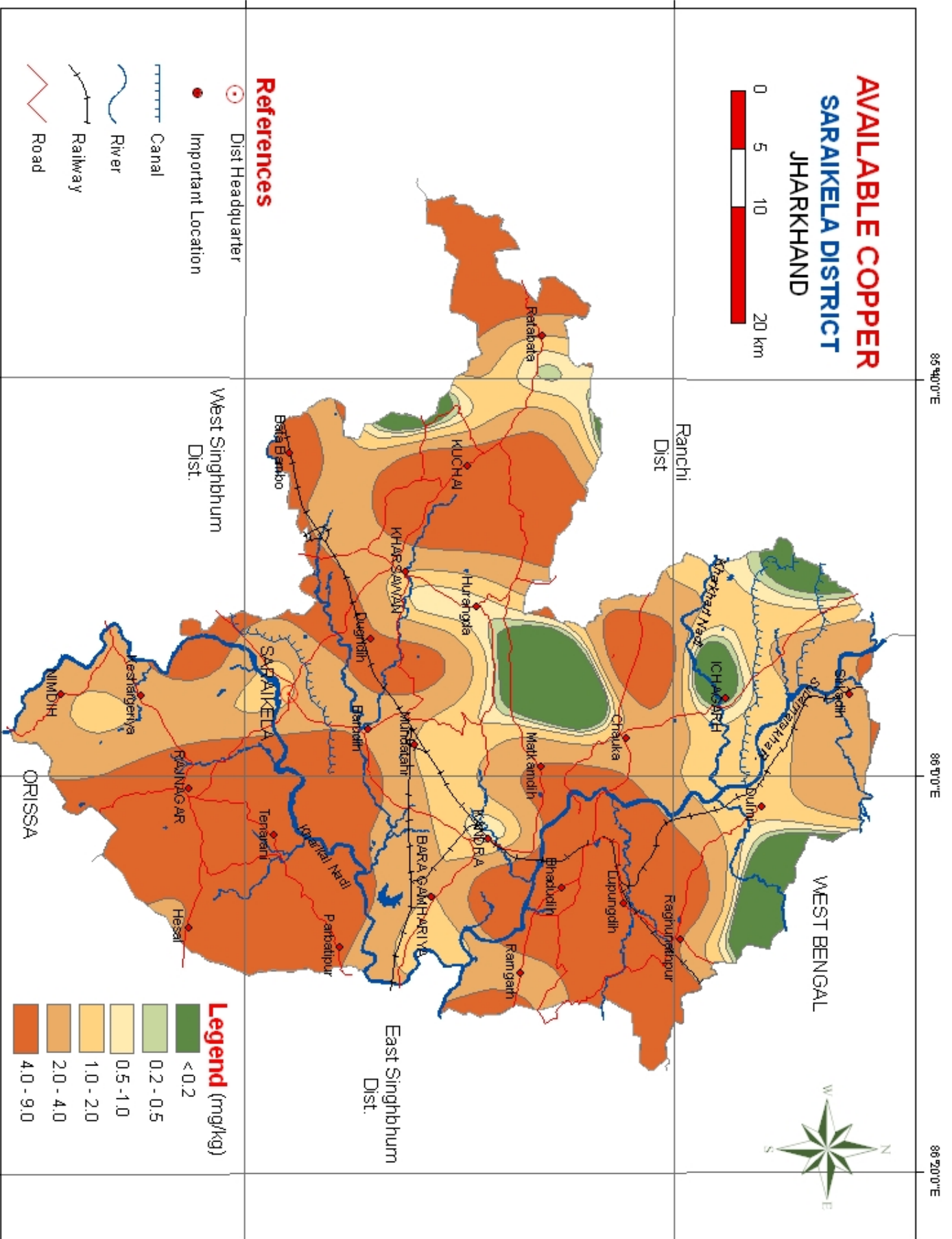
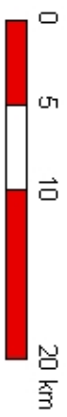
23°0'N

86°40'E

86°10'E

86°20'E

# AVAILABLE COPPER SARAIKELA DISTRICT JHARKHAND



## References

- Dist Headquarter
- Important Location
- Canal
- River
- Railway
- Road

## Legend (mg/kg)

- < 0.2
- 0.2 - 0.5
- 0.5 - 1.0
- 1.0 - 2.0
- 2.0 - 4.0
- 4.0 - 9.0

Fig. 11

86°40'E

86°10'E

86°20'E

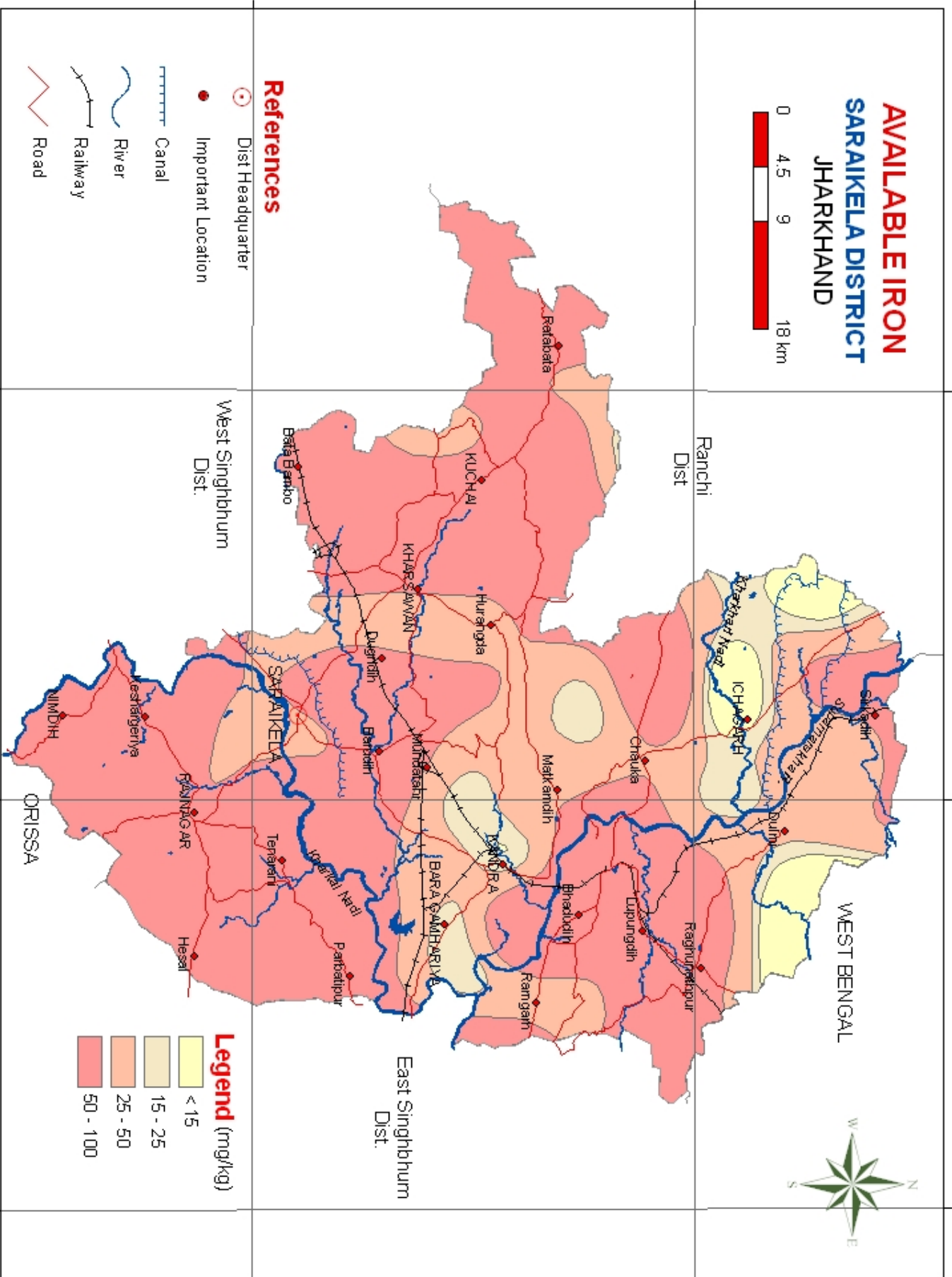
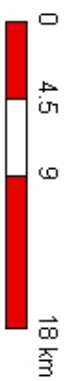
22°40'N

22°40'N

23°0'N

23°0'N

# AVAILABLE IRON SARAIKELA DISTRICT JHARKHAND



## References

- Dist Headquarter
- Important Location
- Canal
- River
- Railway
- Road

- ## Legend (mg/kg)
- < 15
  - 15 - 25
  - 25 - 50
  - 50 - 100

Fig. 8

85°40'0"E

86°10'0"E

86°20'0"E

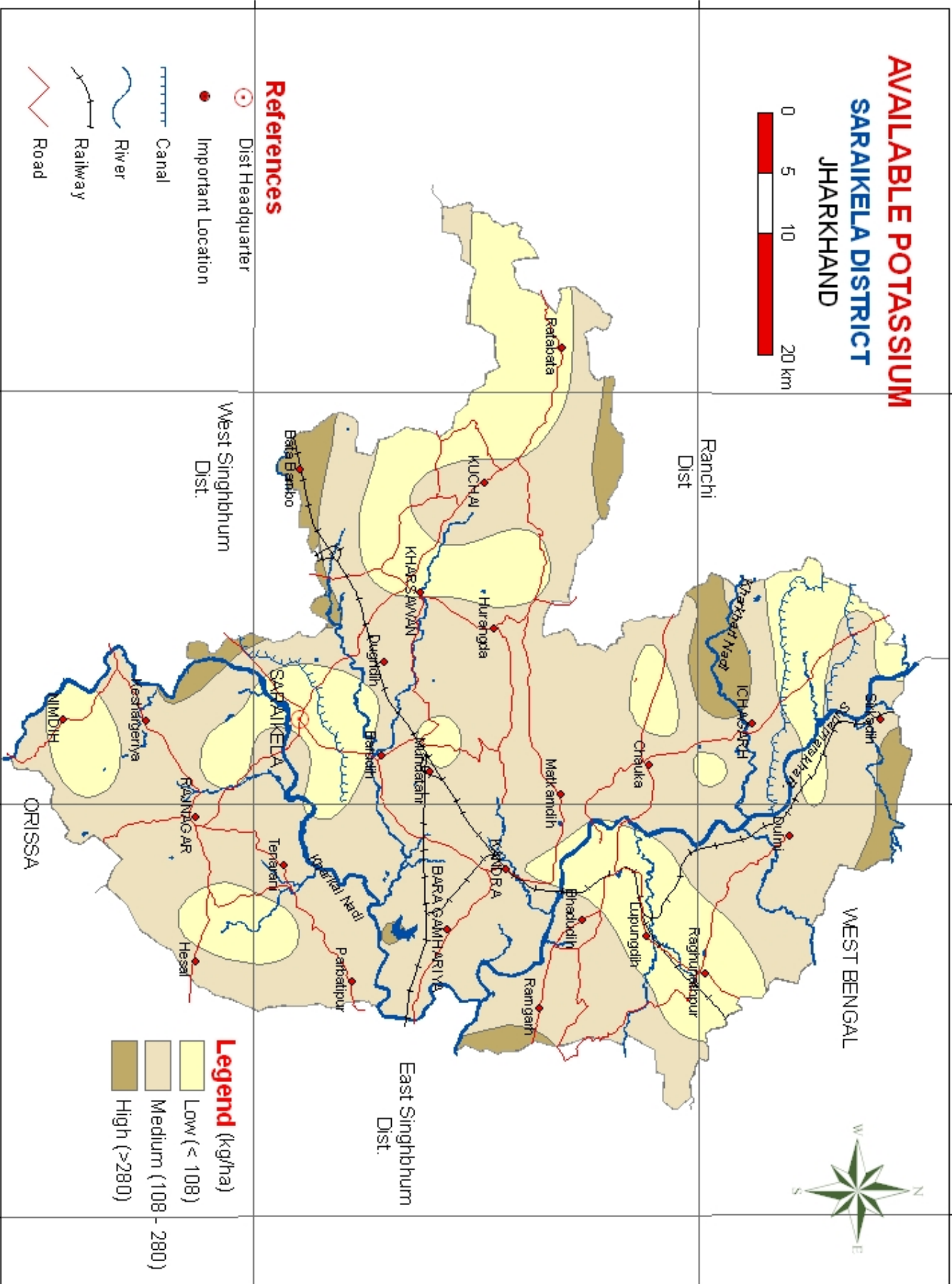
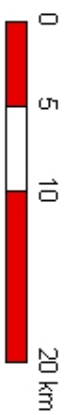
22°40'0"N

22°40'0"N

23°0'0"N

23°0'0"N

# AVAILABLE POTASSIUM SARAIKELA DISTRICT JHARKHAND



## References

- Dist Headquarter
- Important Location
- Canal
- River
- Railway
- Road

## Legend (kg/ha)

- Low (< 108)
- Medium (108 - 280)
- High (>280)

Fig. 8

86°40'0"E

86°10'0"E

86°20'0"E

22°40'0"N

22°40'0"N

23°0'0"N

23°0'0"N

86°40'0"E

86°10'0"E

86°20'0"E

# AVAILABLE MANGANESE

## SARAIKELA DISTRICT JHARKHAND

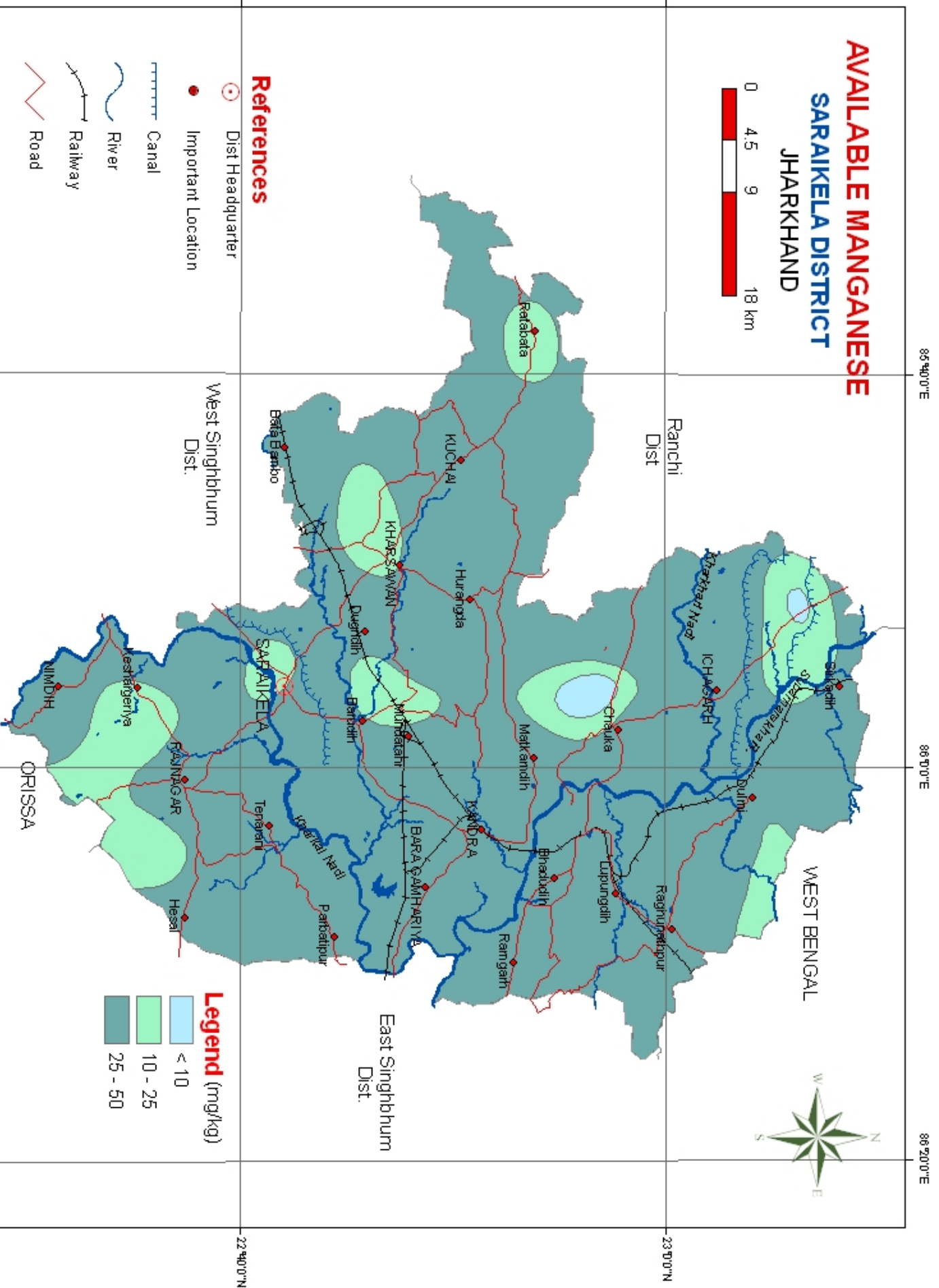
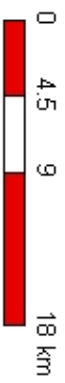


Fig. 9

# AVAILABLE NITROGEN SARAIKELA DISTRICT JHARKHAND

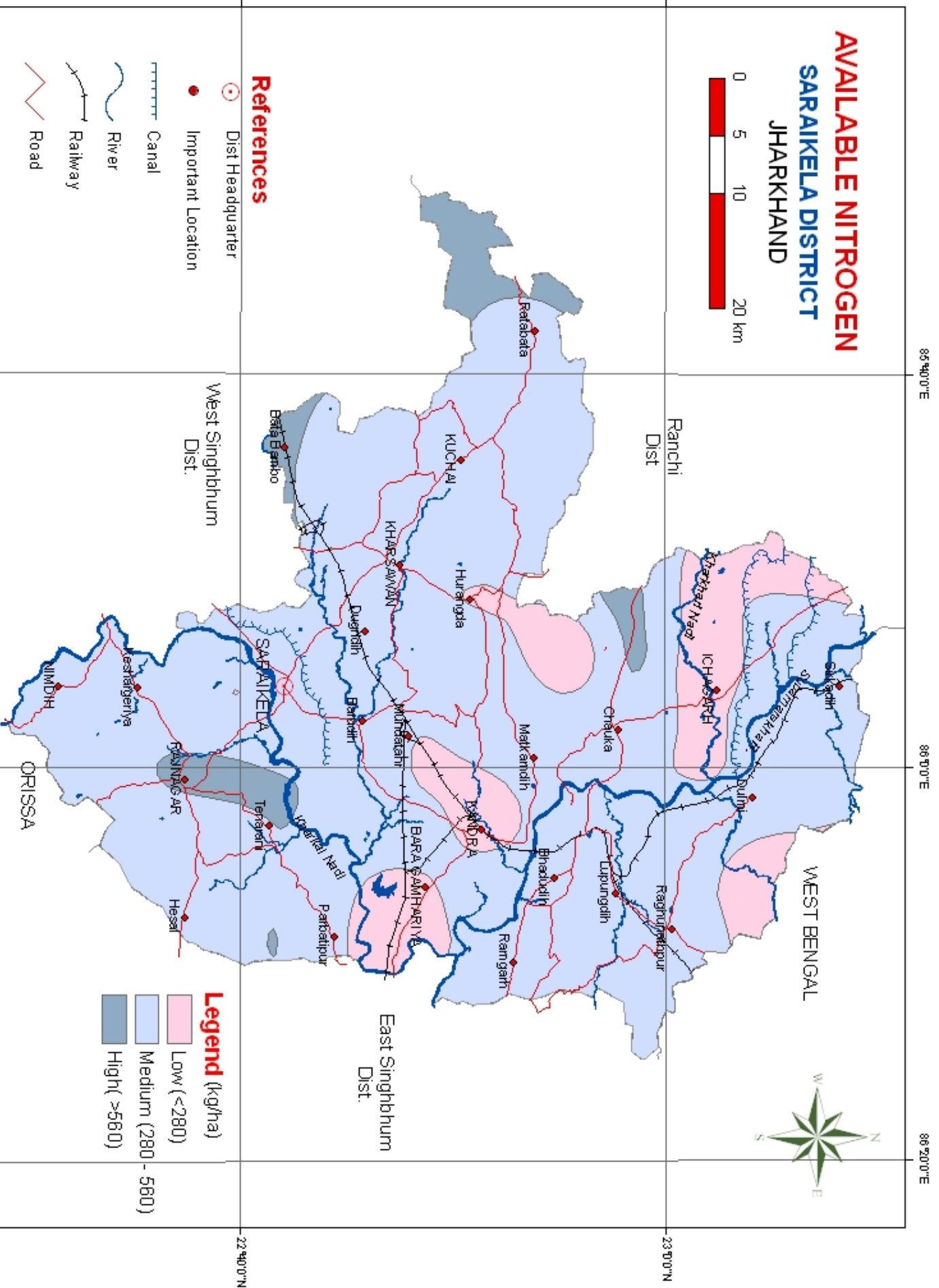
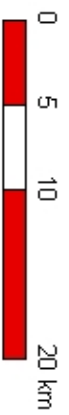


Fig. 4



# AVAILABLE PHOSPHOROUS

## SARAIKELA DISTRICT JHARKHAND

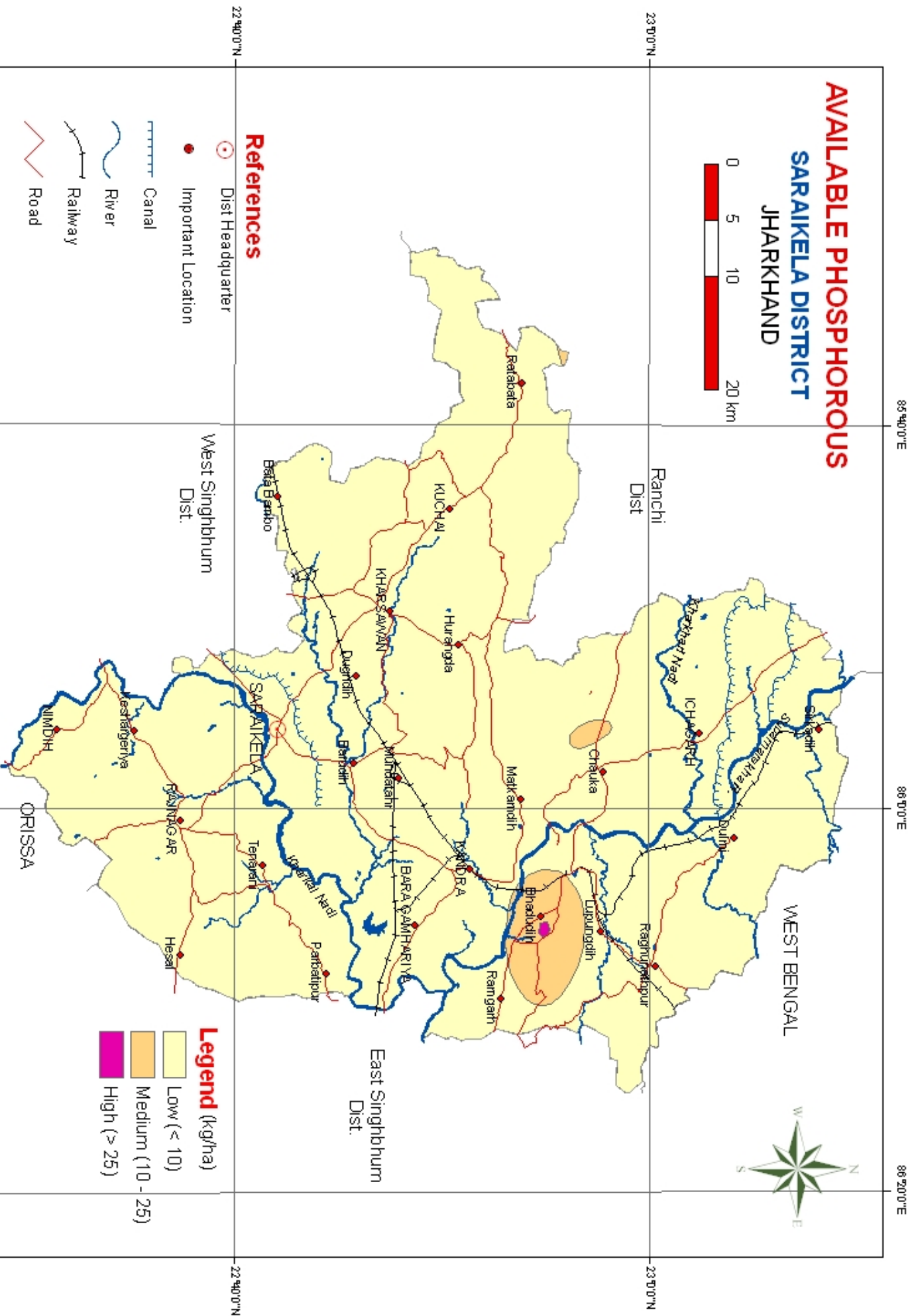
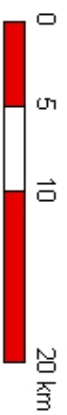


Fig. 5

# AVAILABLE SULPHUR SARAIKELA DISTRICT JHARKHAND

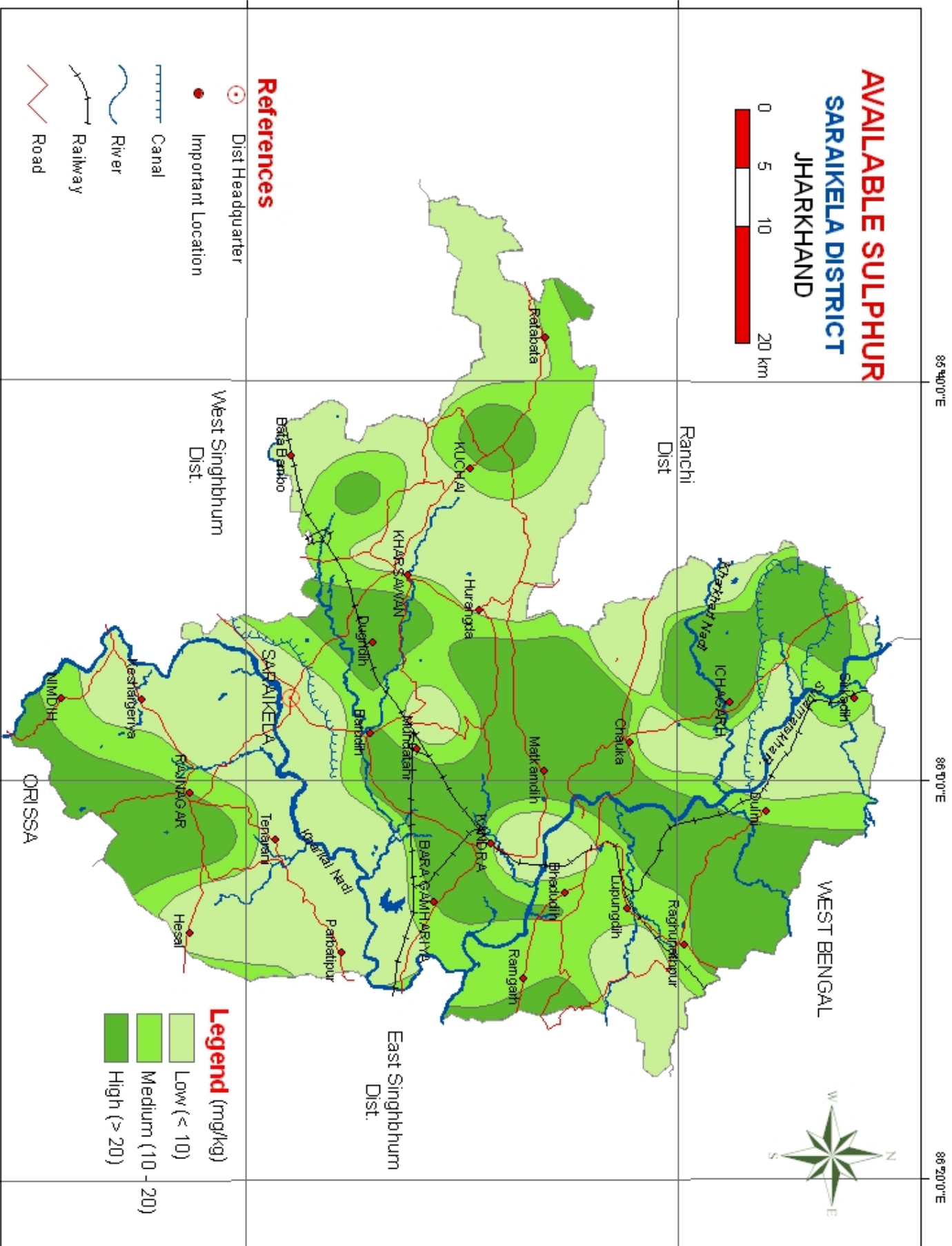
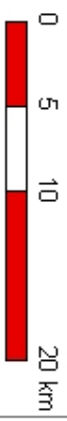
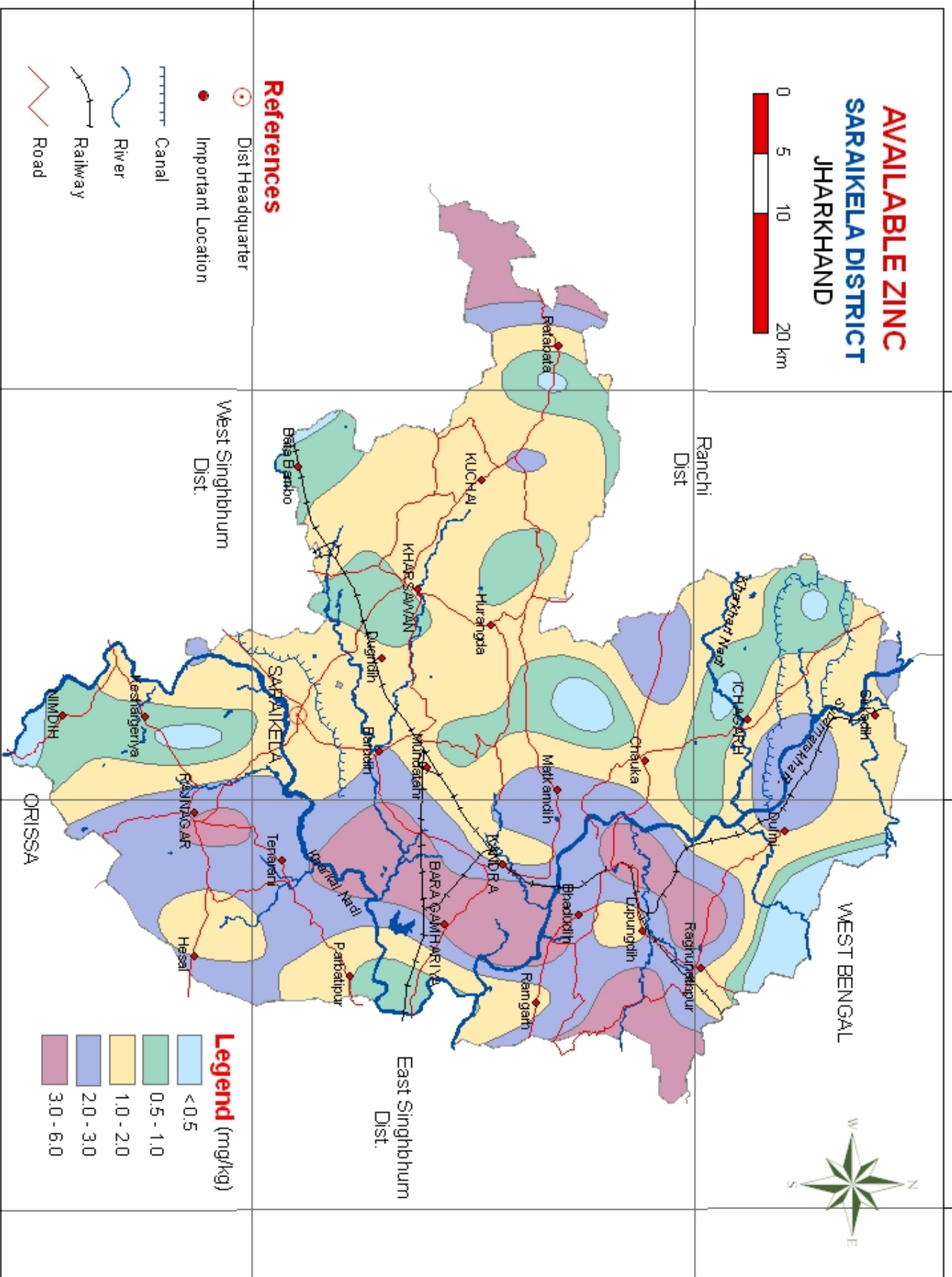


Fig. 7

# AVAILABLE ZINC SARAIKELA DISTRICT JHARKHAND



## References

- ⊙ Dist Headquarter
- Important Location

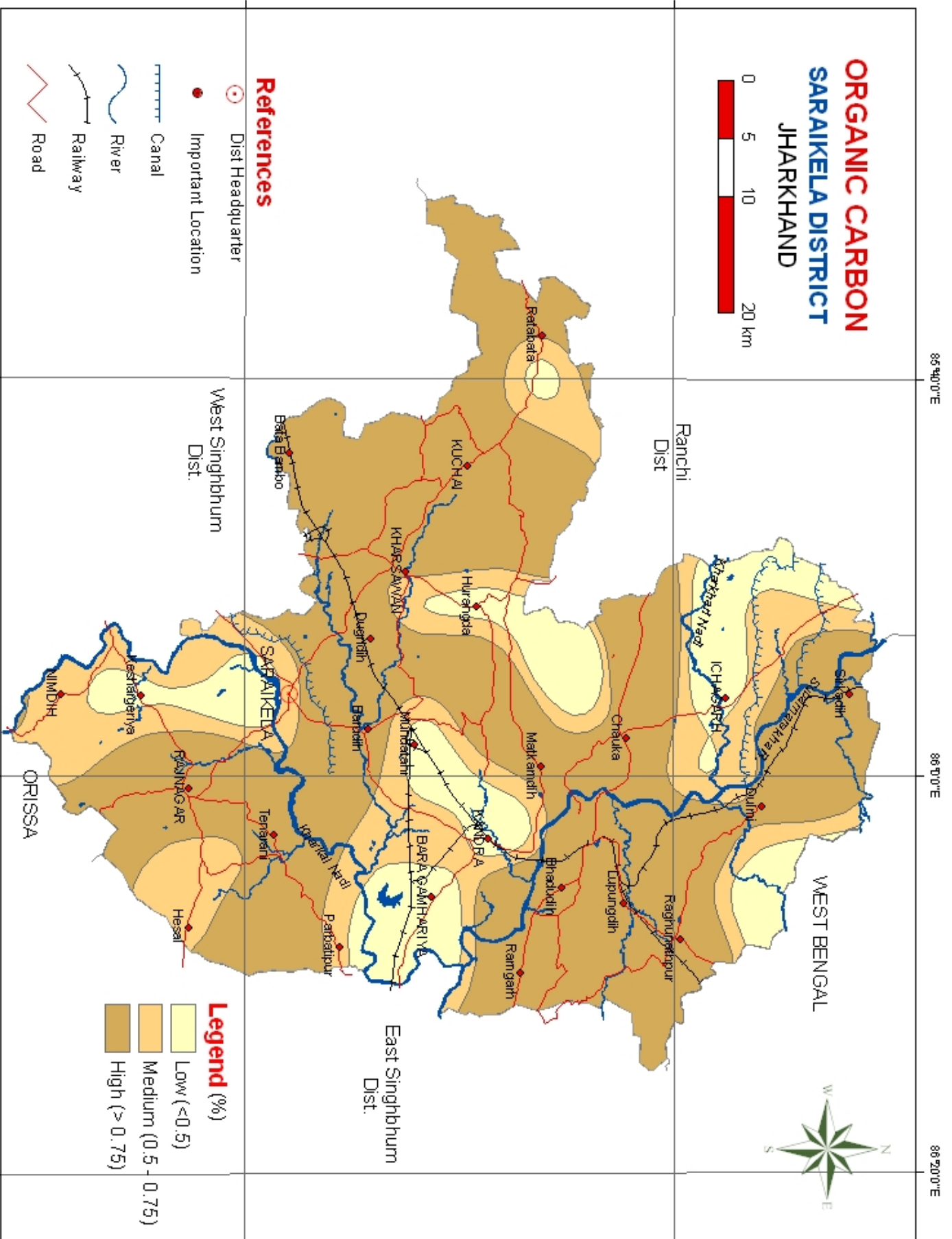
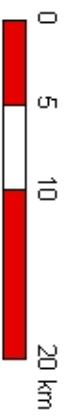
- Canal
- River
- Railway
- Road

## Legend (mg/kg)

- < 0.5
- 0.5 - 1.0
- 1.0 - 2.0
- 2.0 - 3.0
- 3.0 - 6.0

Fig. 10

# ORGANIC CARBON SARAIKELA DISTRICT JHARKHAND



## References

- Dist Headquarter
- Important Location
- Canal
- River
- Railway
- Road

## Legend (%)

- Low (<0.5)
- Medium (0.5 - 0.75)
- High (>0.75)

Fig. 3