

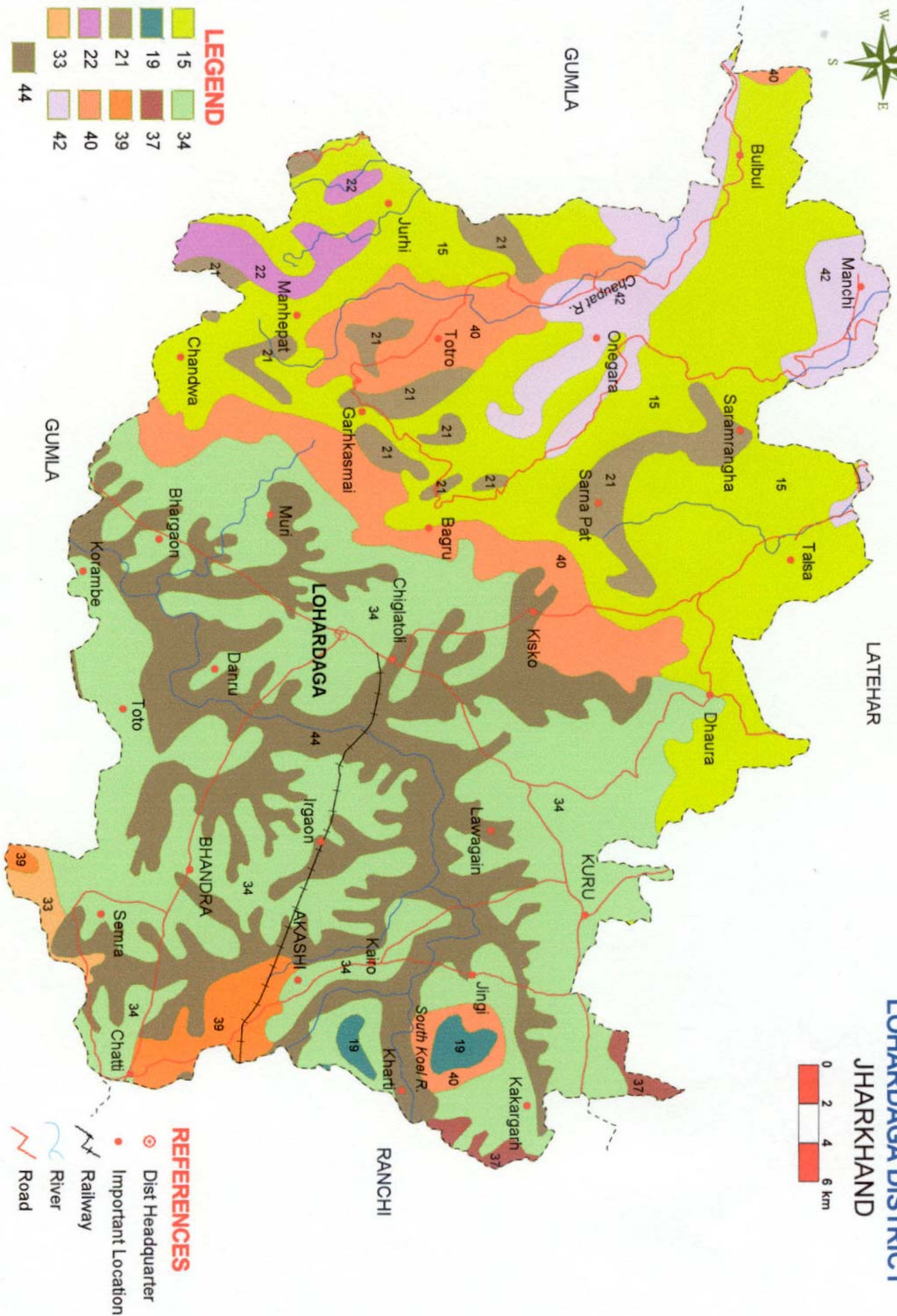
Fig. 2



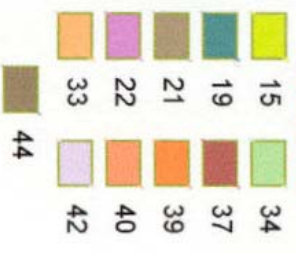
SOILS

LOHARDAGA DISTRICT

JHARKHAND



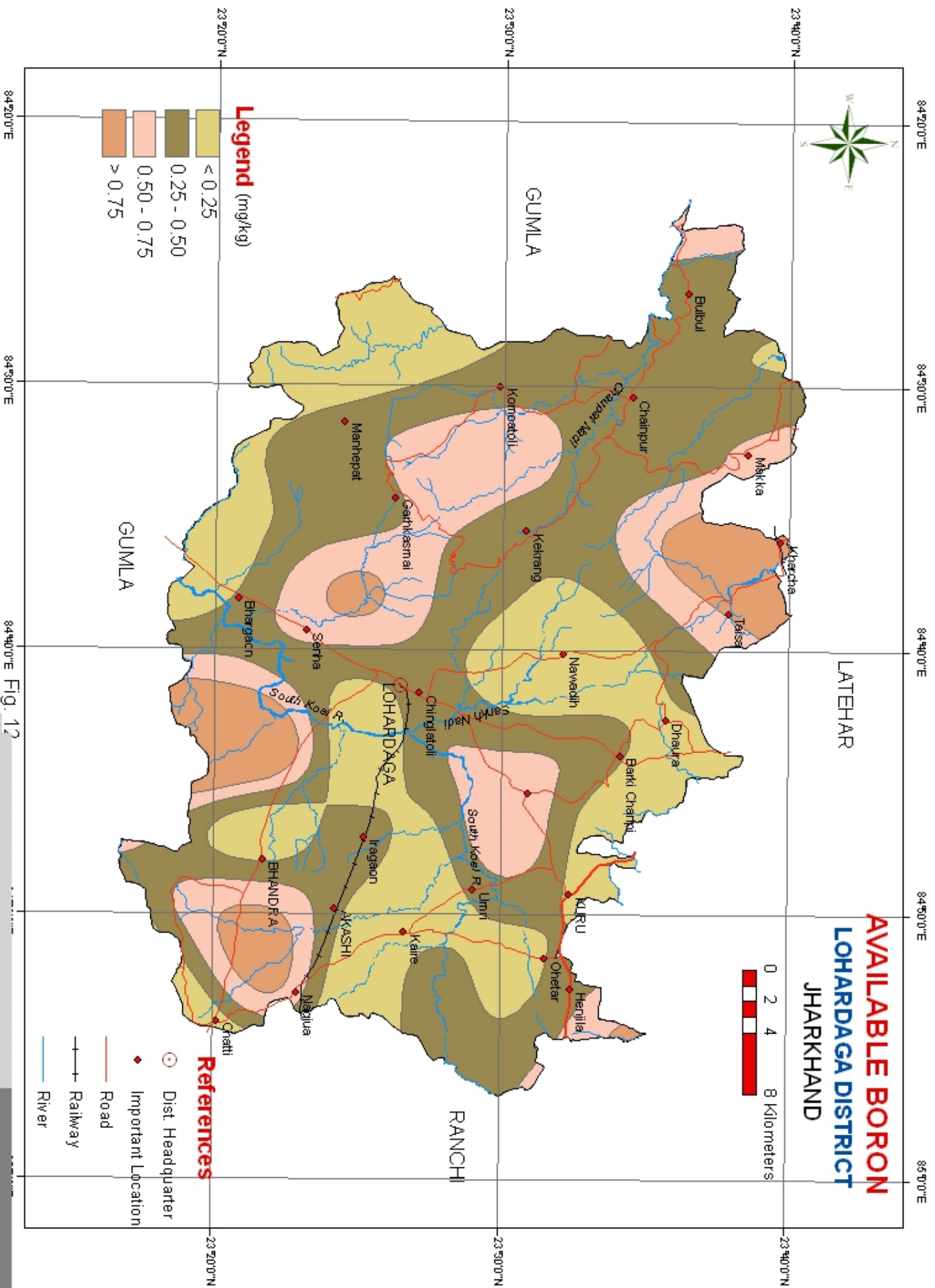
LEGEND



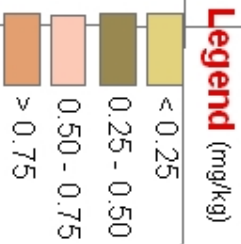
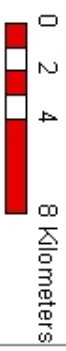
REFERENCES

- Dist Headquarter
- Important Location
- Railway
- River
- Road

Fig. - 1



AVAILABLE BORON
LOHARDAGA DISTRICT
JHARKHAND



References

- Dist. Headquarter
- Important Location
- Road
- Railway
- River

Fig. 12

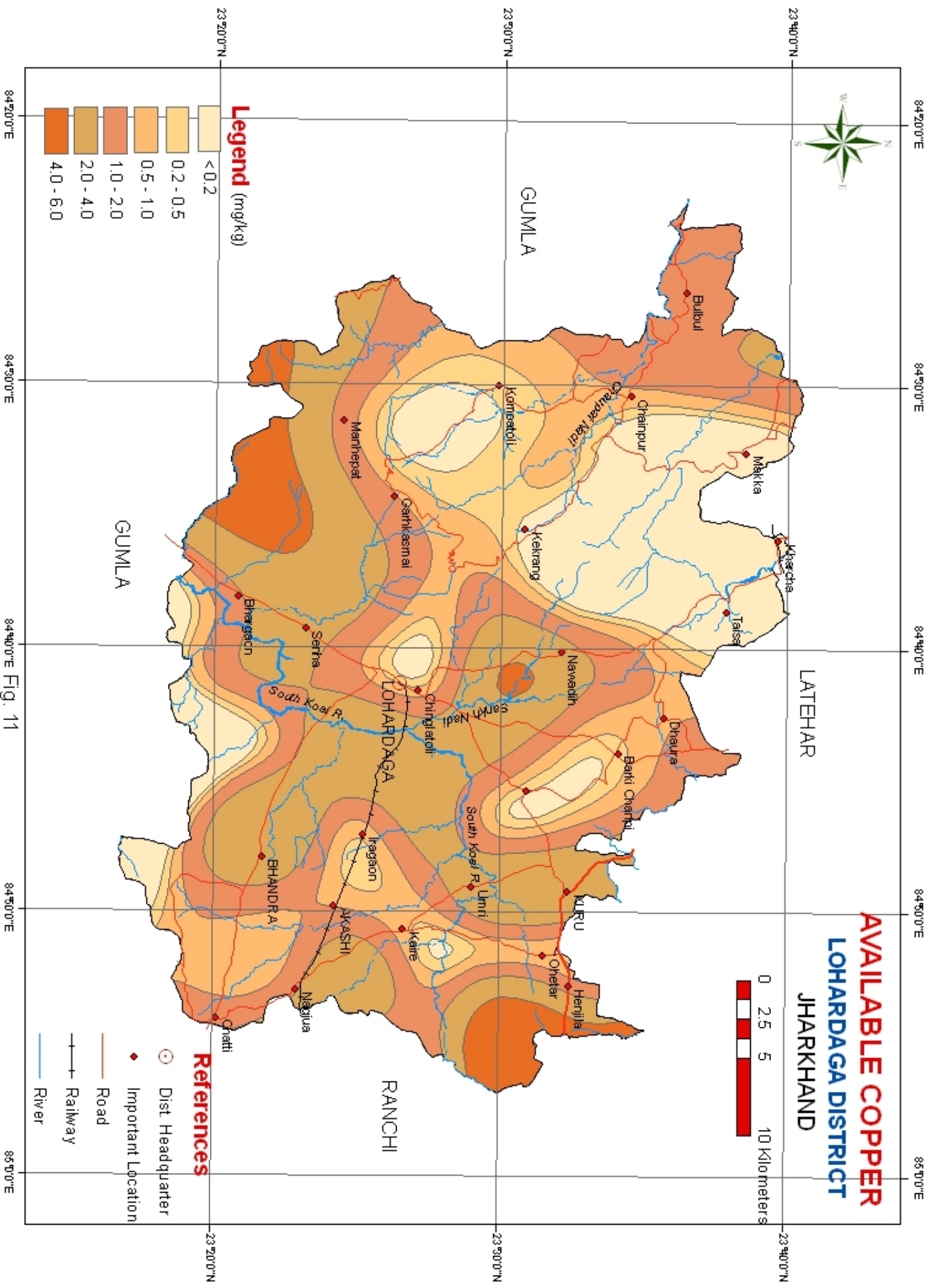


Fig. 11

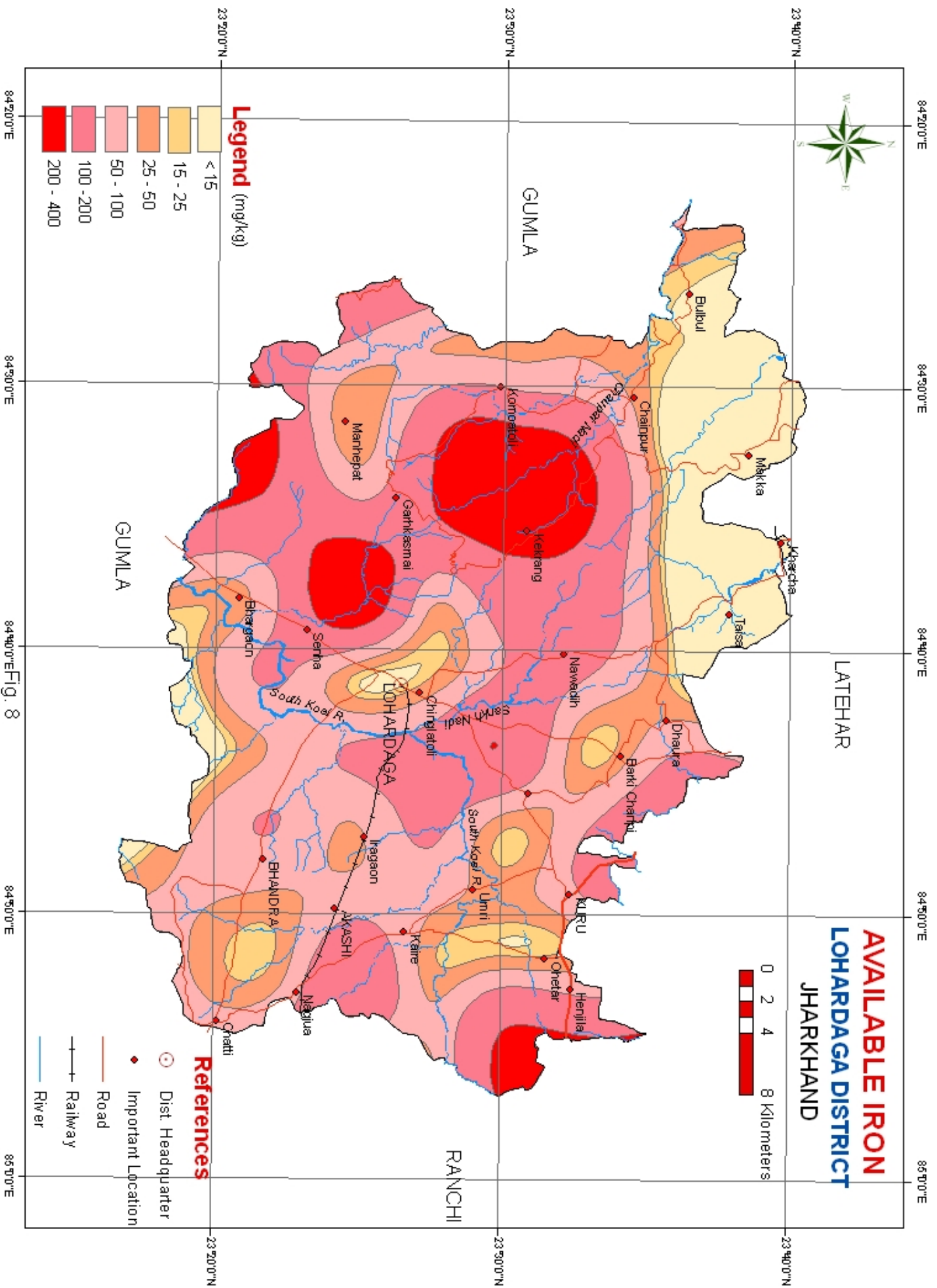
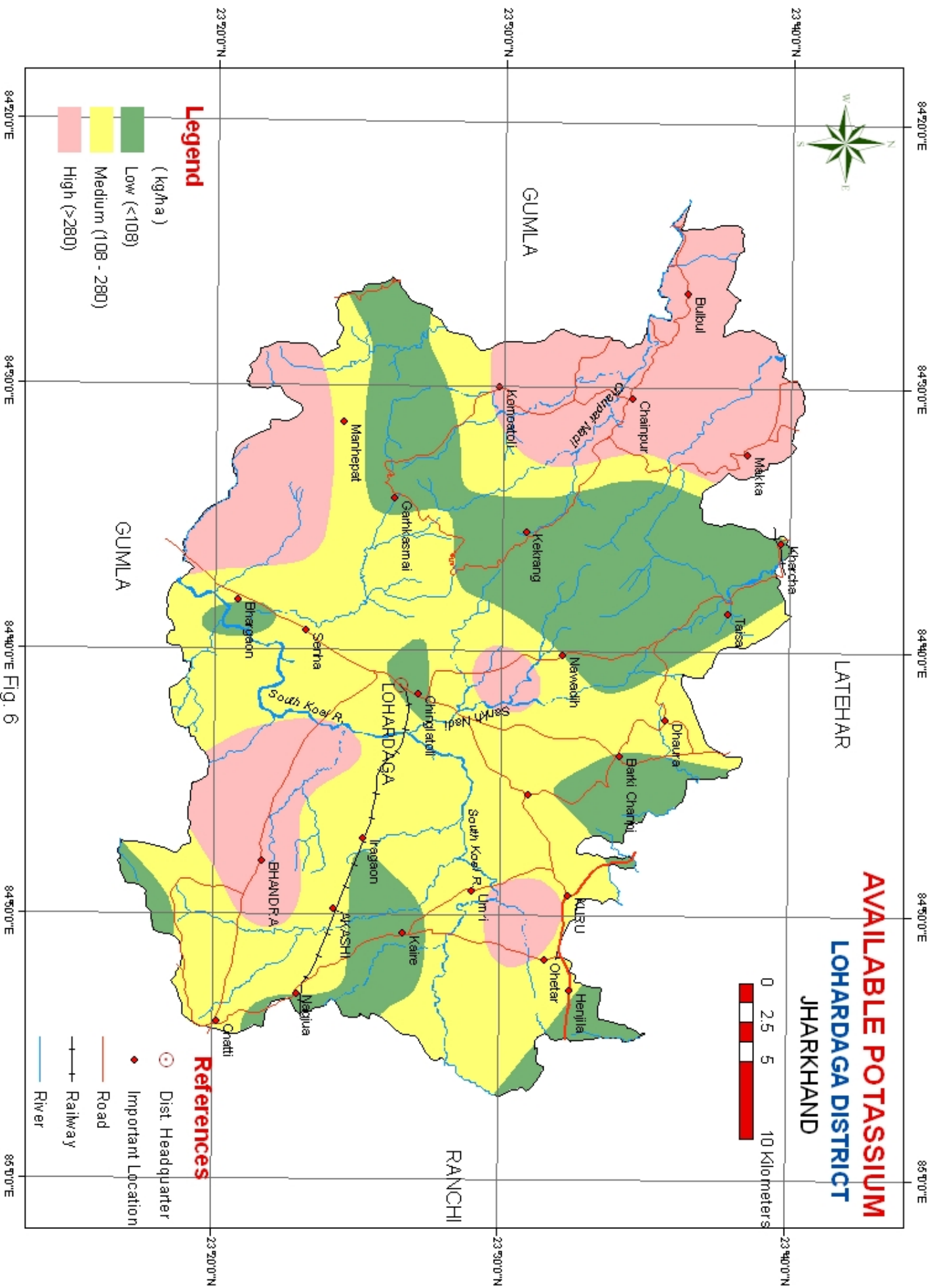


Fig. 8



84°20'0"E Fig. 6 84°50'0"E 85°0'0"E

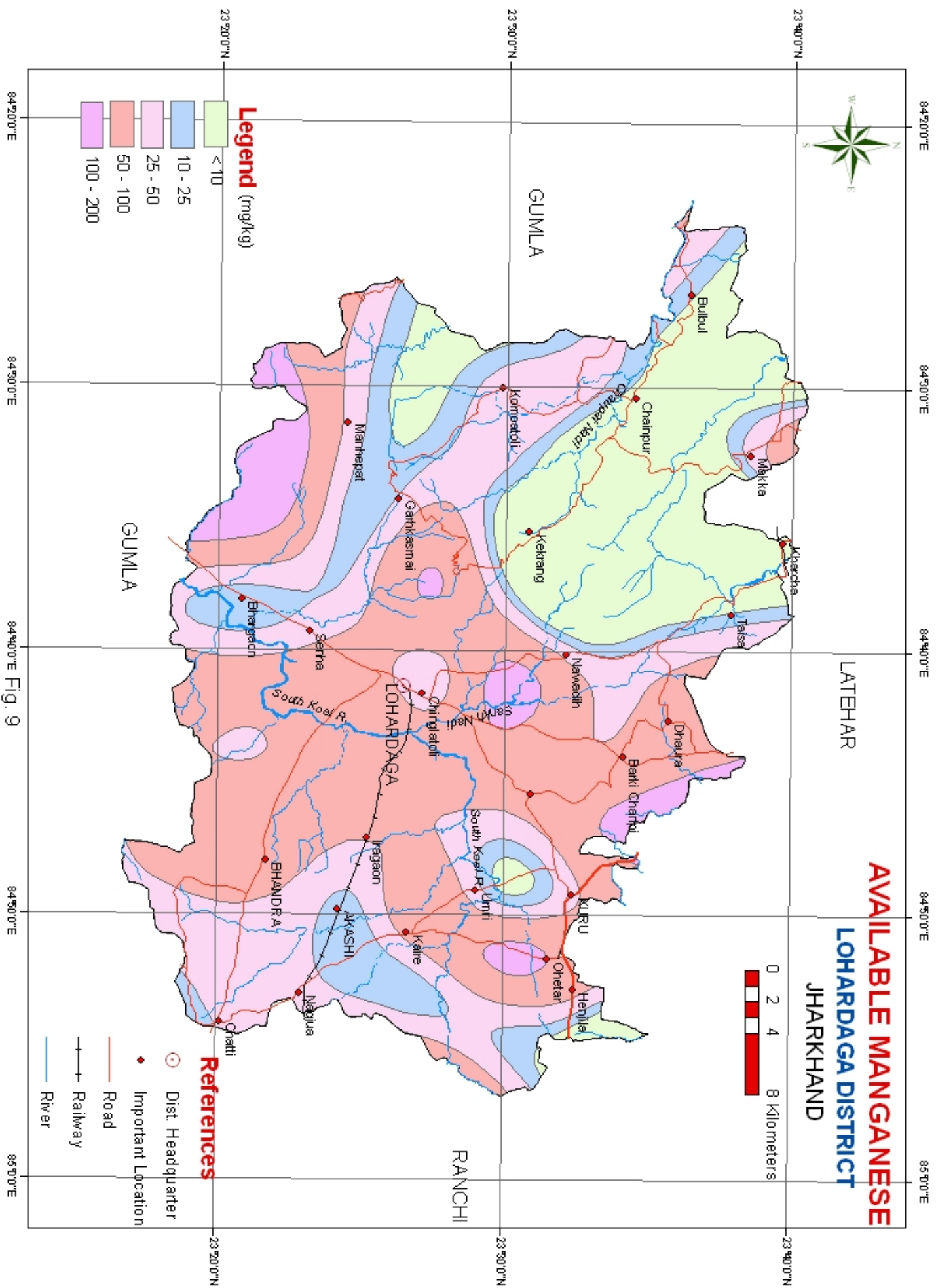


Fig. 9

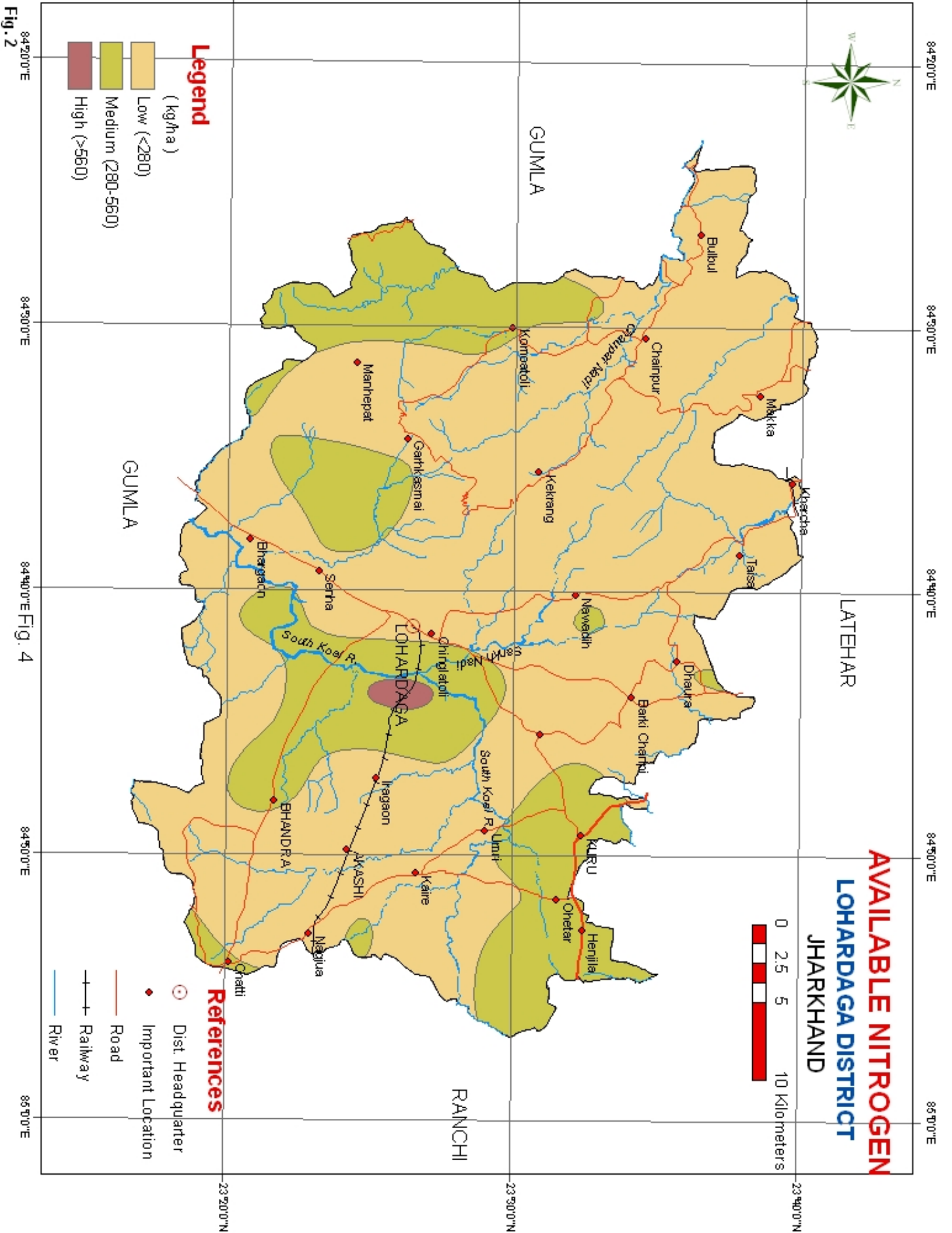


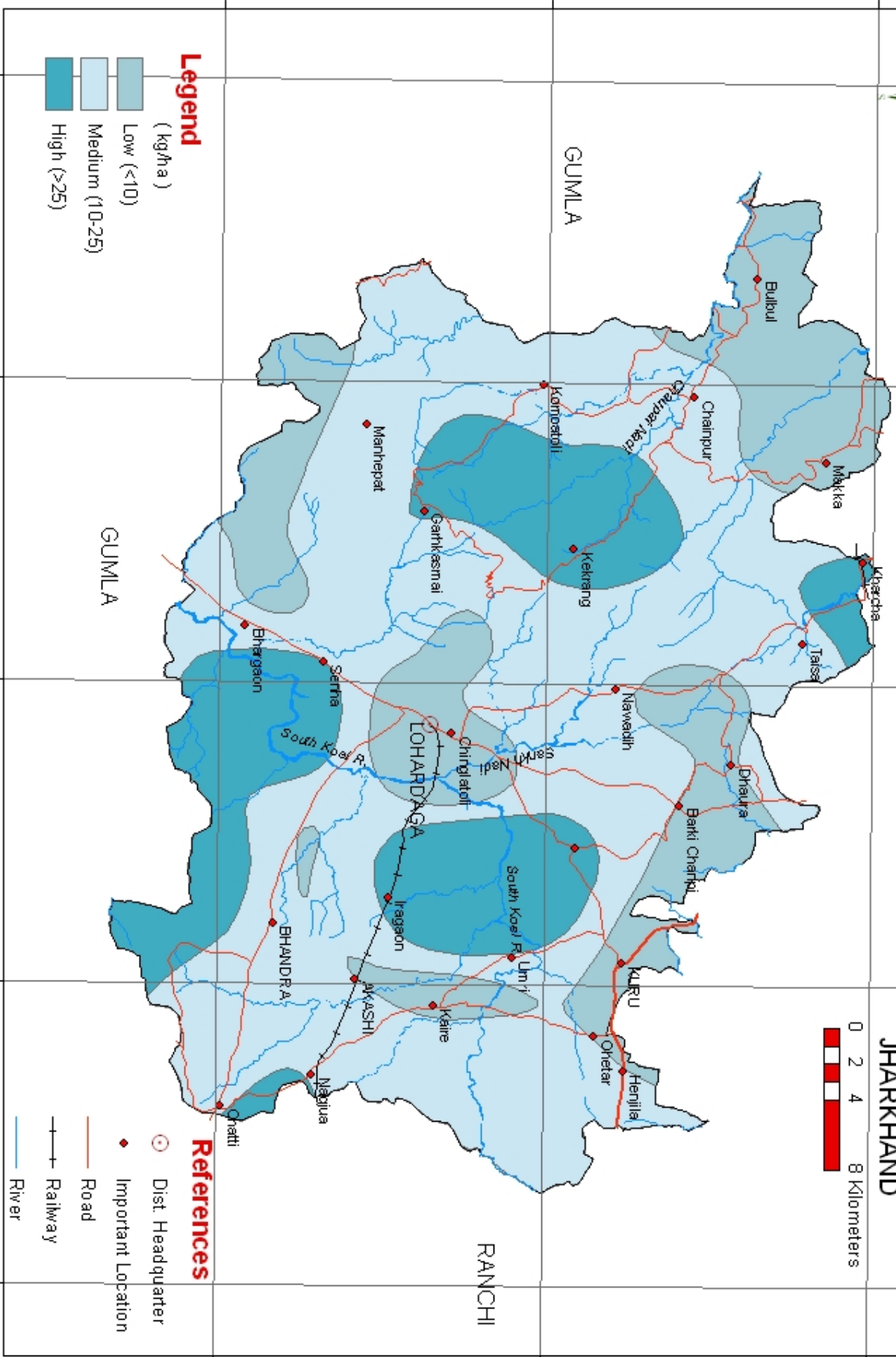
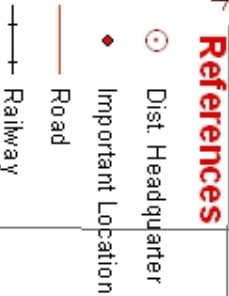
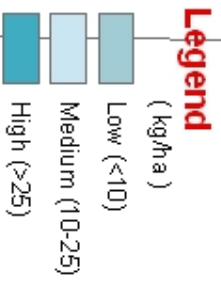
Fig. 2

Fig. 4



84°20'0"E 84°30'0"E 84°40'0"E 84°50'0"E 85°0'0"E
23°40'0"N 23°30'0"N 23°20'0"N

AVAILABLE PHOSPHOROUS LOHARDAGA DISTRICT JHARKHAND



84°20'0"E 84°30'0"E 84°40'0"E 84°50'0"E 85°0'0"E
23°40'0"N 23°30'0"N 23°20'0"N
Fig. 5

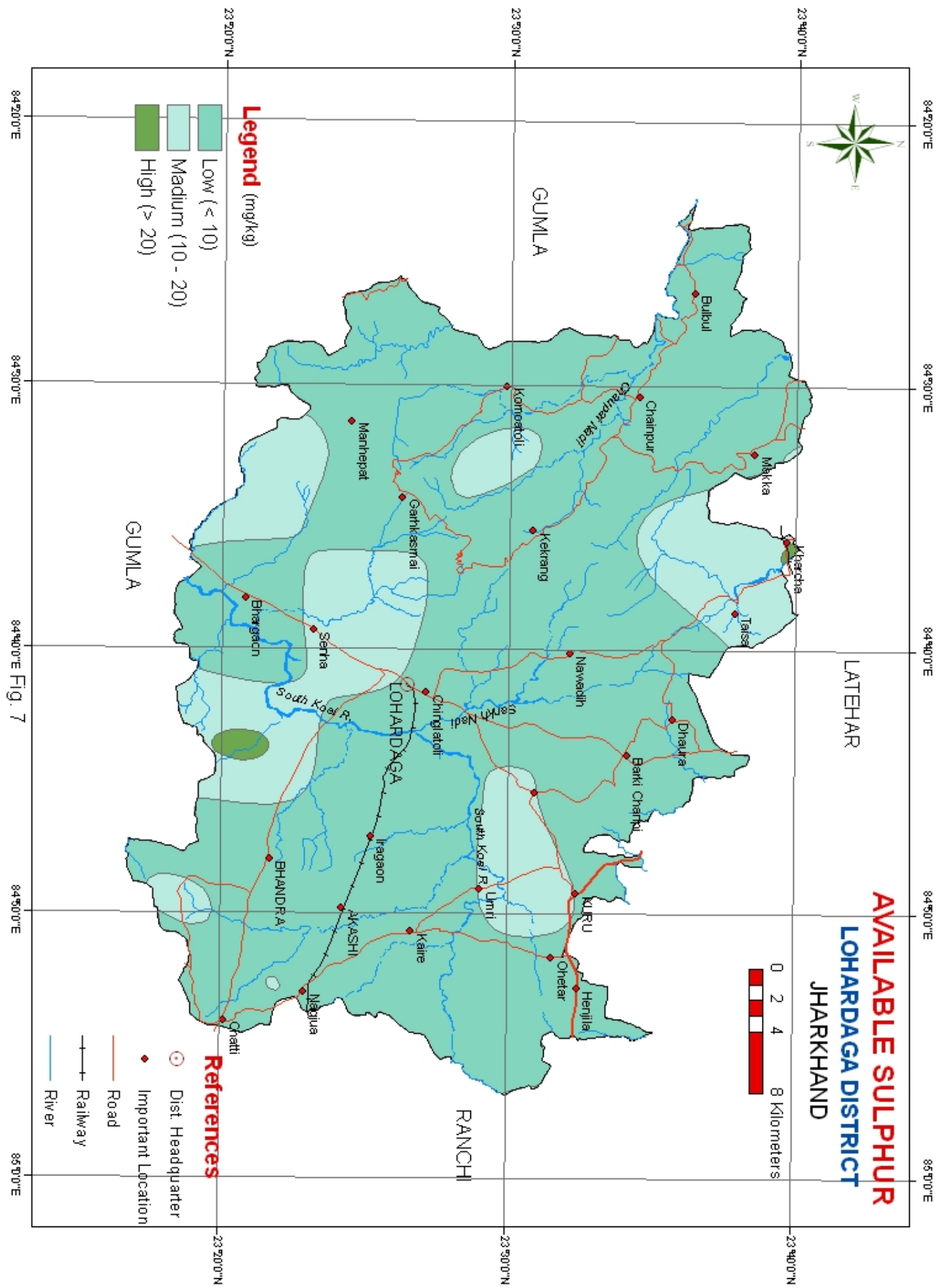
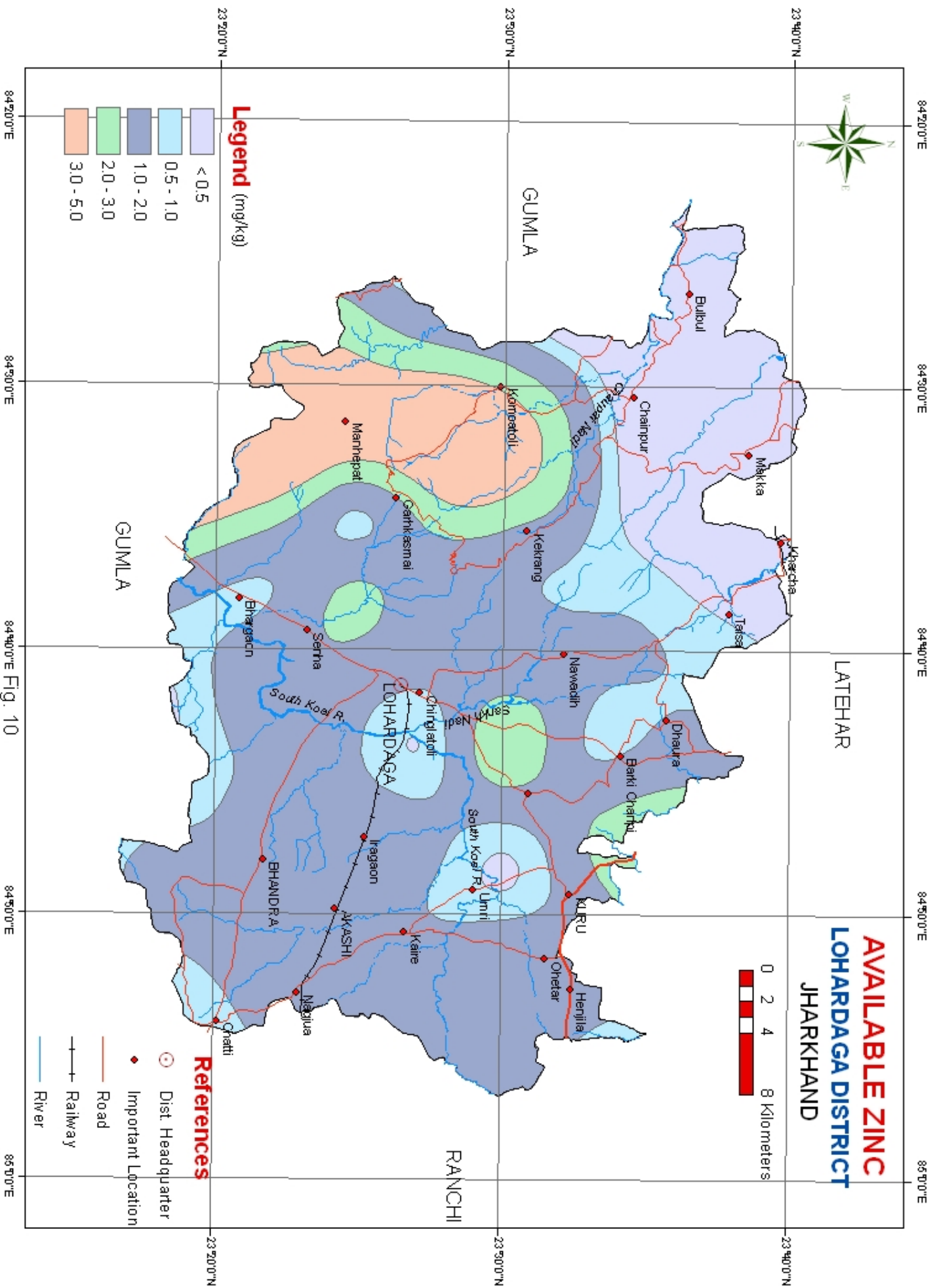


Fig. 7



AVAILABLE ZINC
LOHARDAGA DISTRICT
JHARKHAND

0 2 4 8 Kilometers

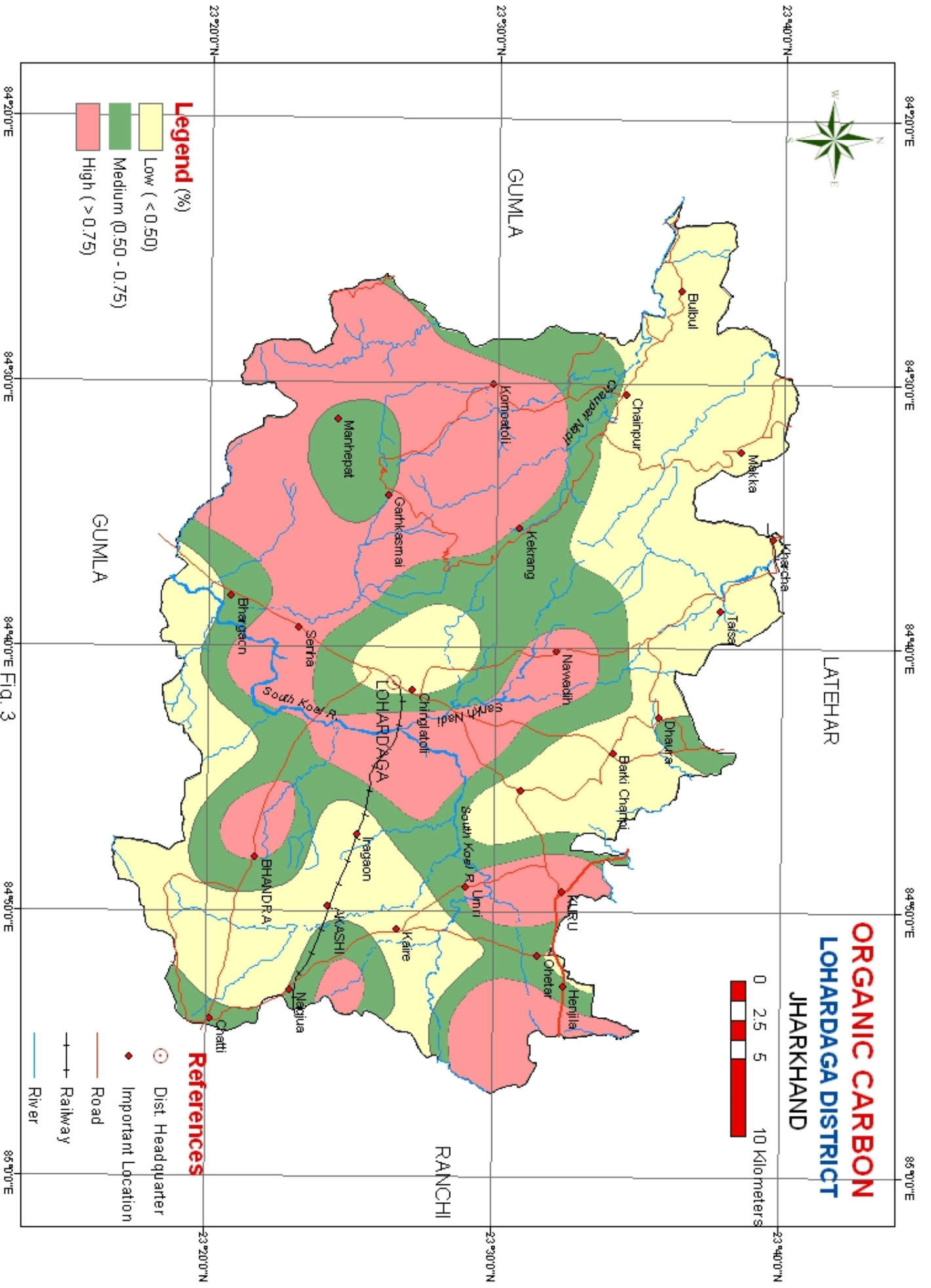
Legend (mg/kg)

- <math>< 0.5</math>
- 0.5 - 1.0
- 1.0 - 2.0
- 2.0 - 3.0
- 3.0 - 5.0

References

- Dist. Headquarter
- ◆ Important Location
- Road
- +— Railway
- River

Fig. 10



ORGANIC CARBON
LOHARDAGA DISTRICT
JHARKHAND



- Legend (%)**
- Low (< 0.50)
 - Medium ($0.50 - 0.75$)
 - High (> 0.75)

- References**
- Dist. Headquarter
 - Important Location
 - Road
 - Railway
 - River

Fig. 3