

AVAILABLE BORON LATEHAR DISTRICT

JHARKHAND

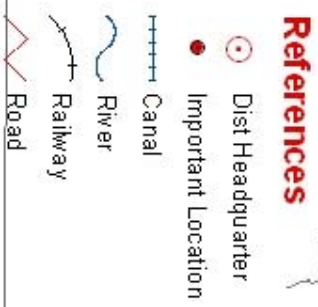
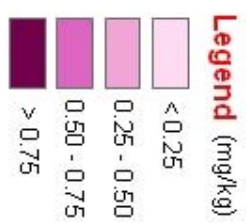
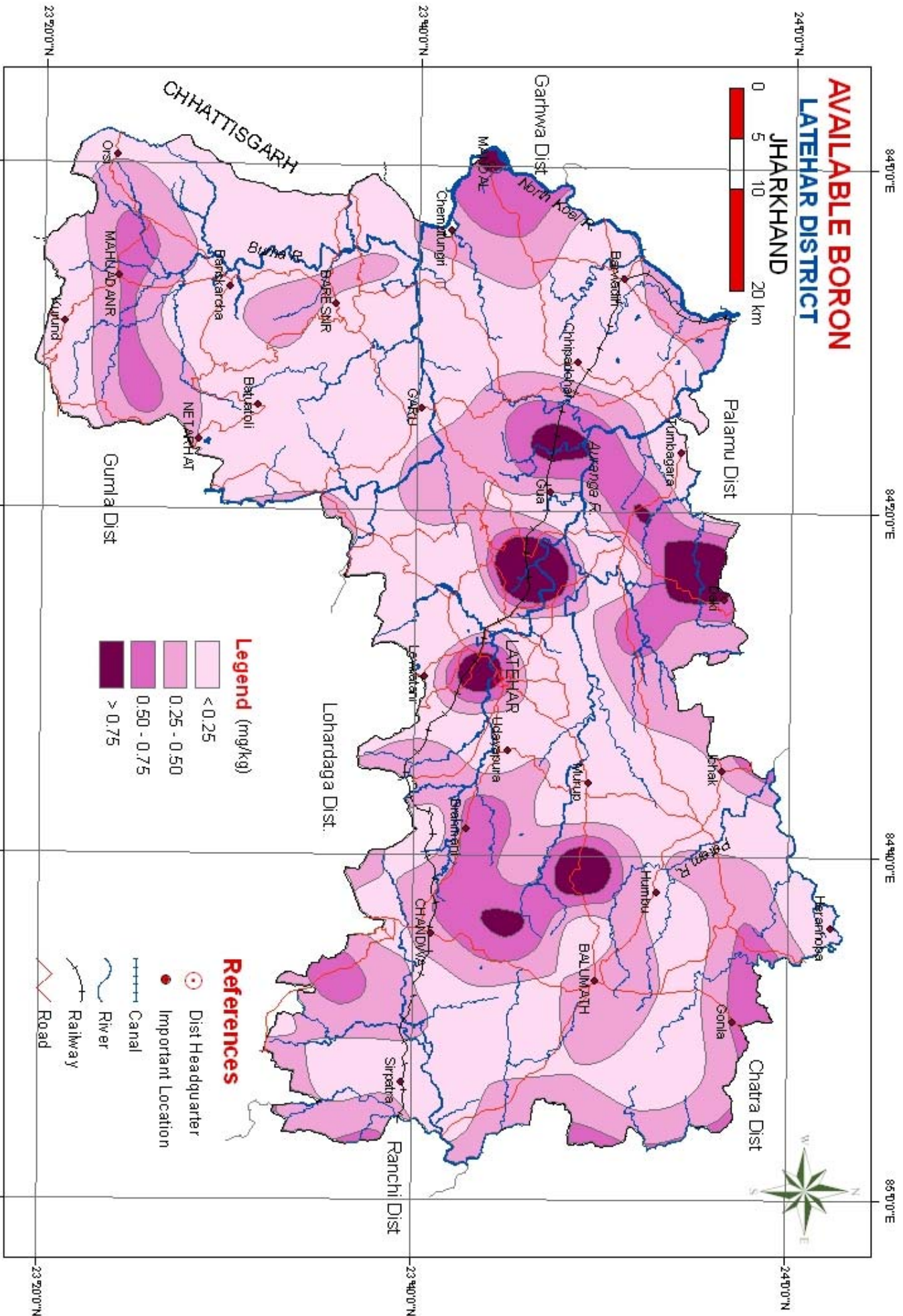
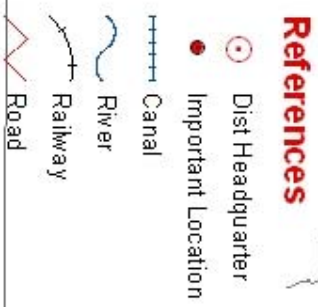
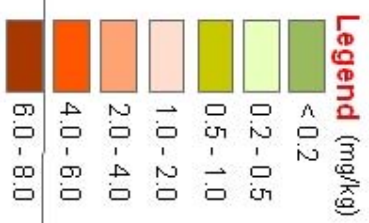
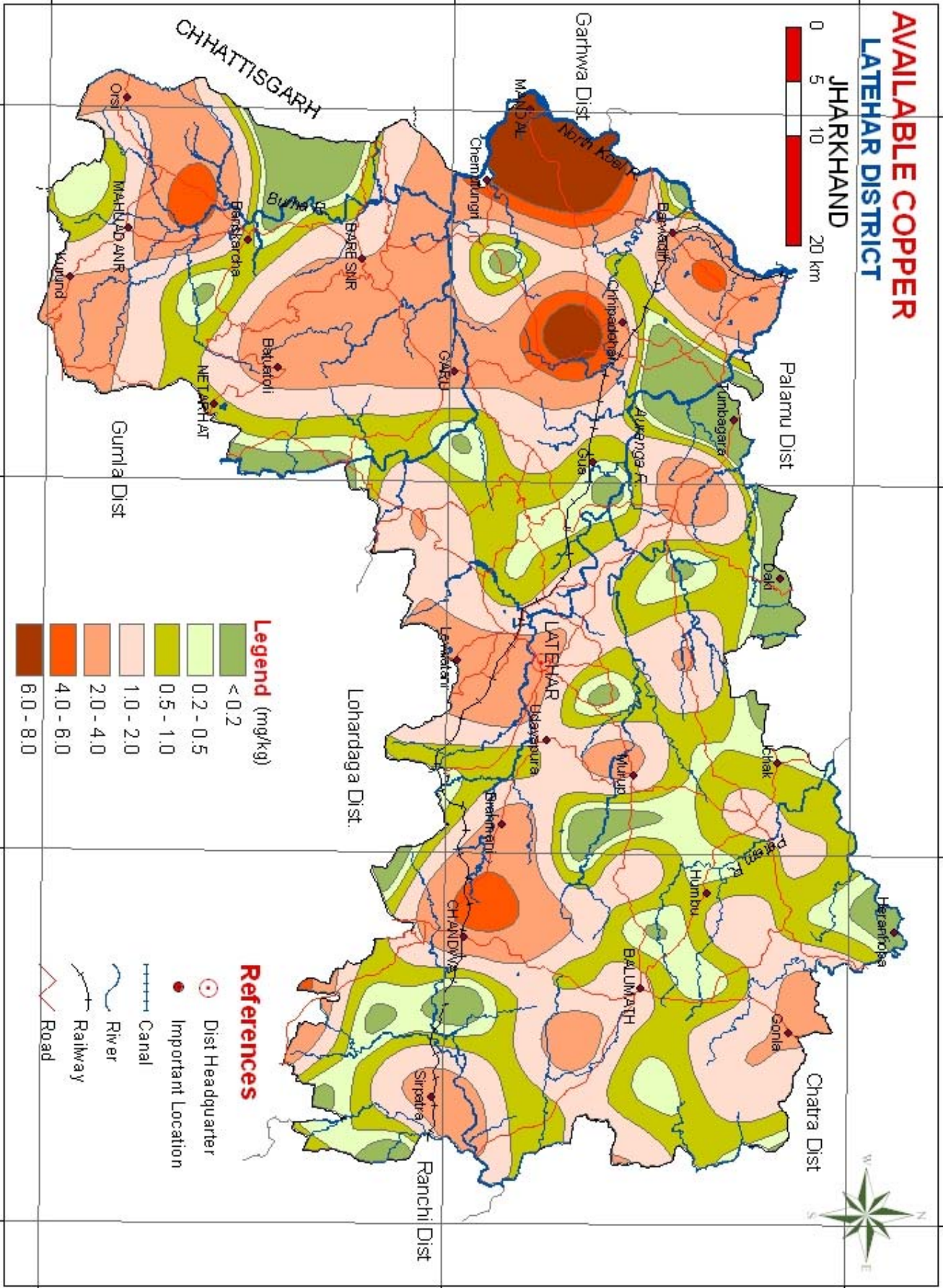
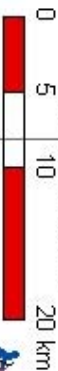


Fig. 12

AVAILABLE COPPER LATEHAR DISTRICT

JHARKHAND



84°0'0"E

84°20'0"E

84°40'0"E

85°0'0"E

23°20'0"N

23°40'0"N

24°0'0"N

23°40'0"N

24°0'0"N

84°0'0"E

84°20'0"E

84°40'0"E

85°0'0"E

Fig. 11

AVAILABLE IRON LATEHAR DISTRICT

JHARKHAND

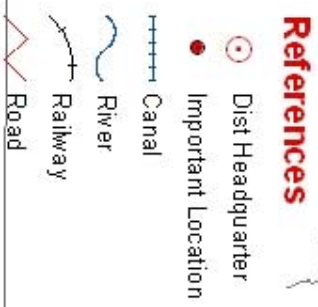
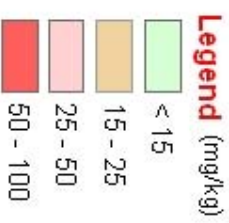
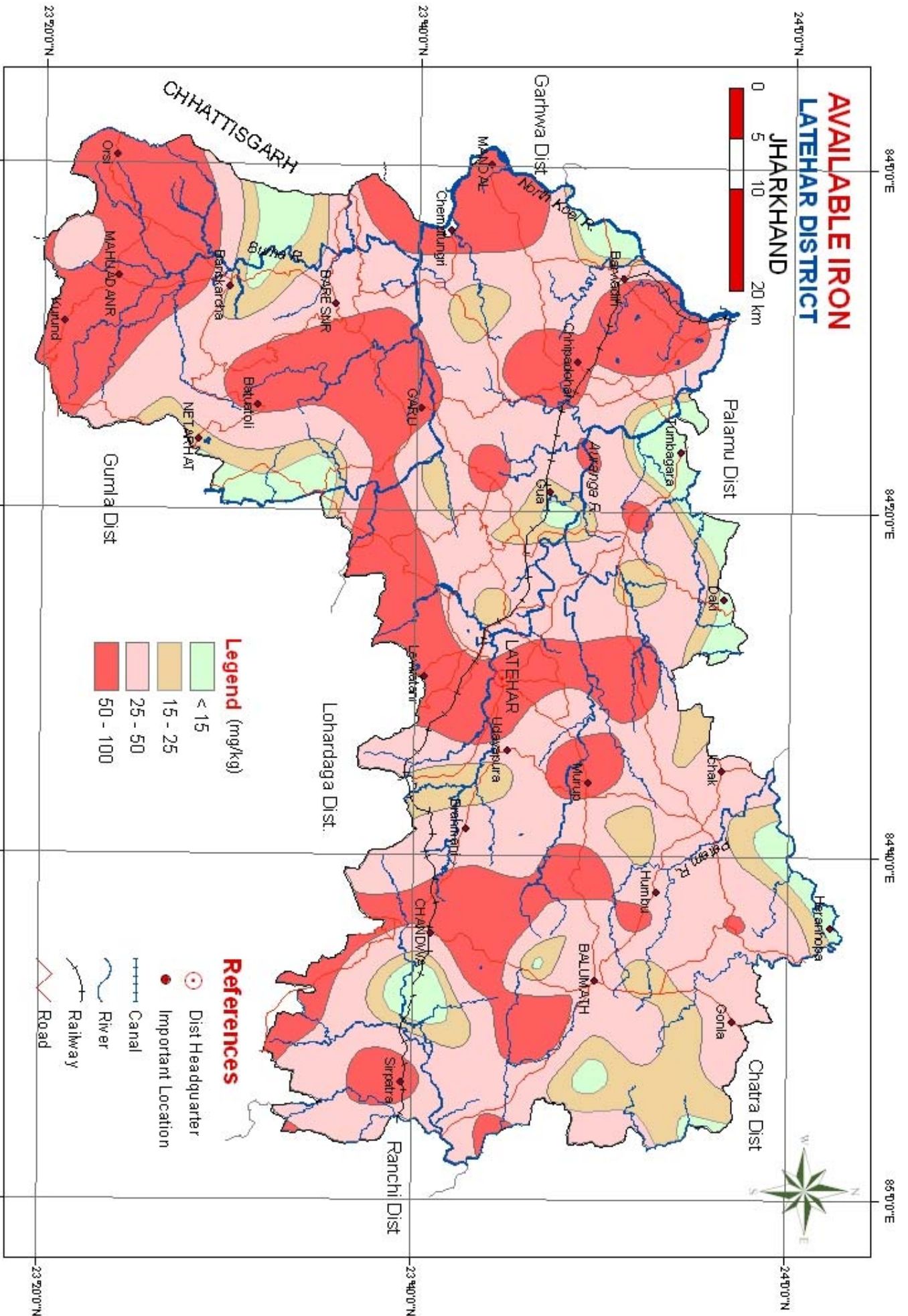


Fig. 8

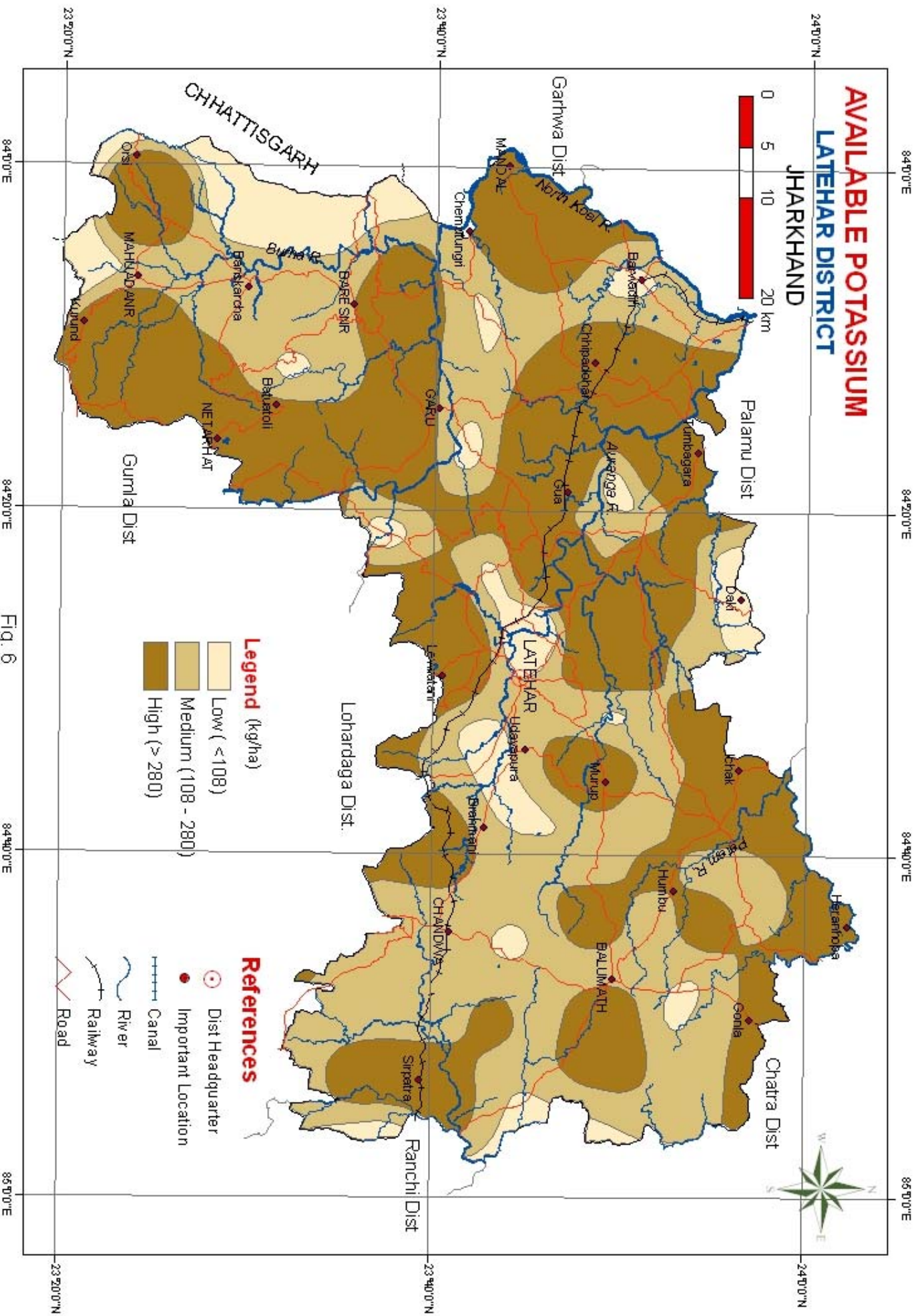


Fig. 6

AVAILABLE MANGANESE LATEHAR DISTRICT

JHARKHAND

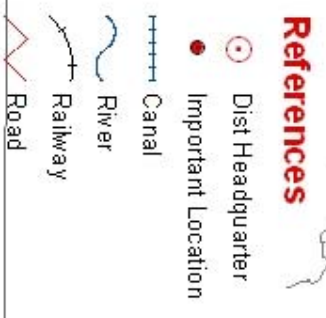
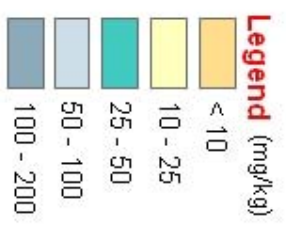
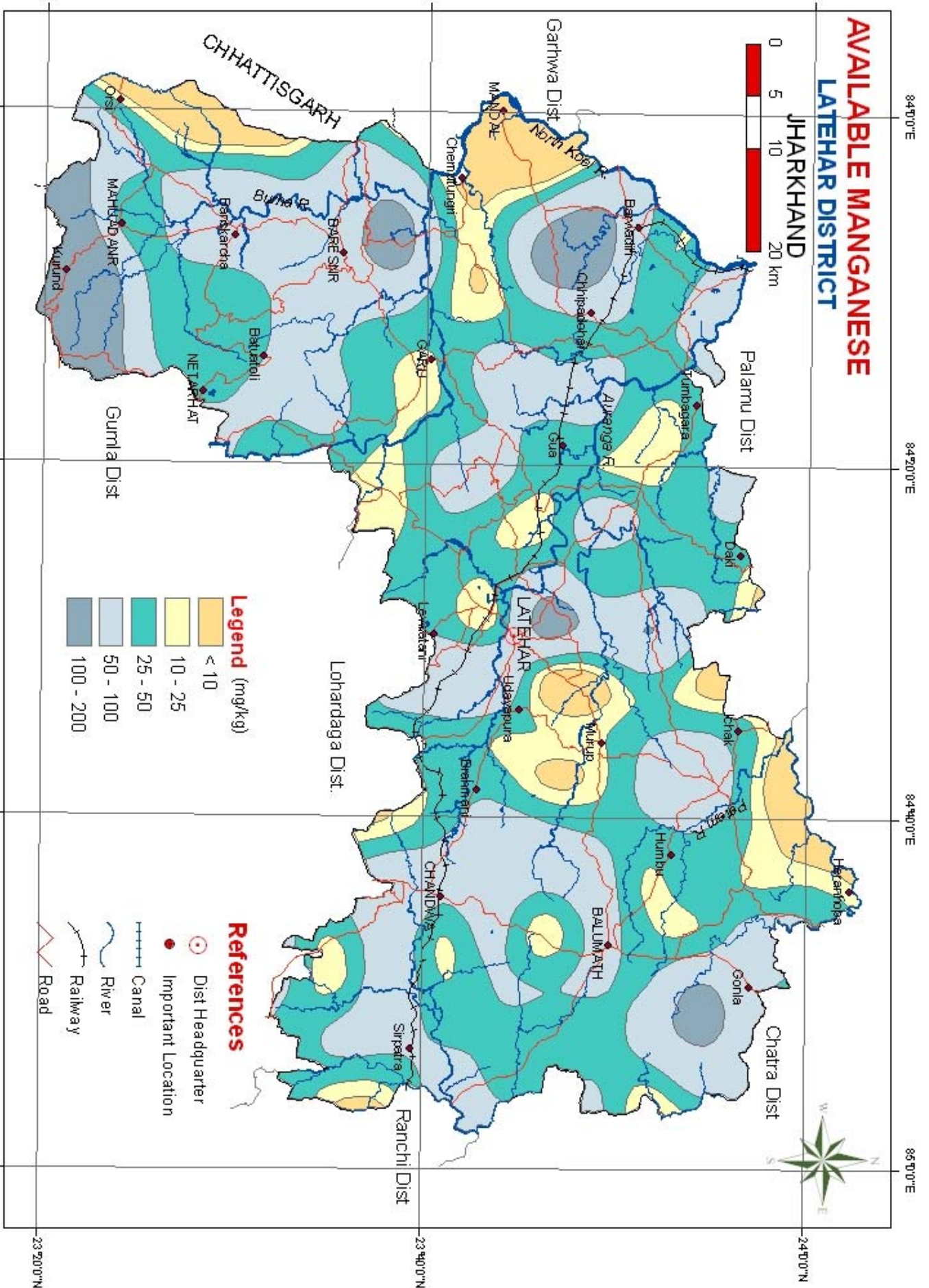
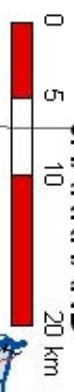


Fig. 9

84°0'0"E

84°20'0"E

84°40'0"E

85°0'0"E

23°20'0"N

23°40'0"N

24°0'0"N

23°40'0"N

24°0'0"N

84°0'0"E

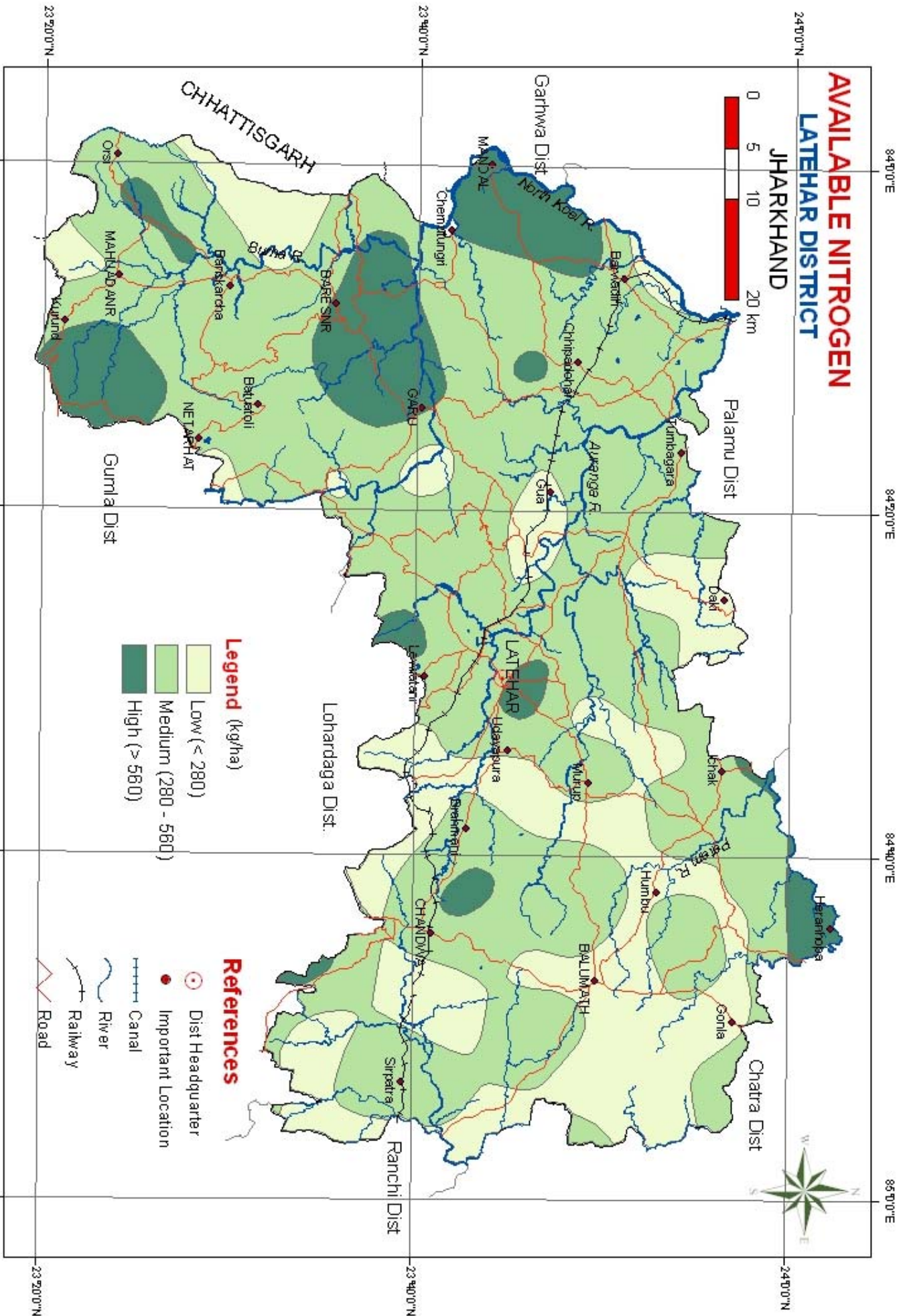
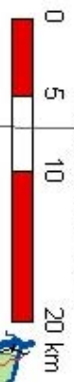
84°20'0"E

84°40'0"E

85°0'0"E

AVAILABLE NITROGEN LATEHAR DISTRICT

JHARKHAND



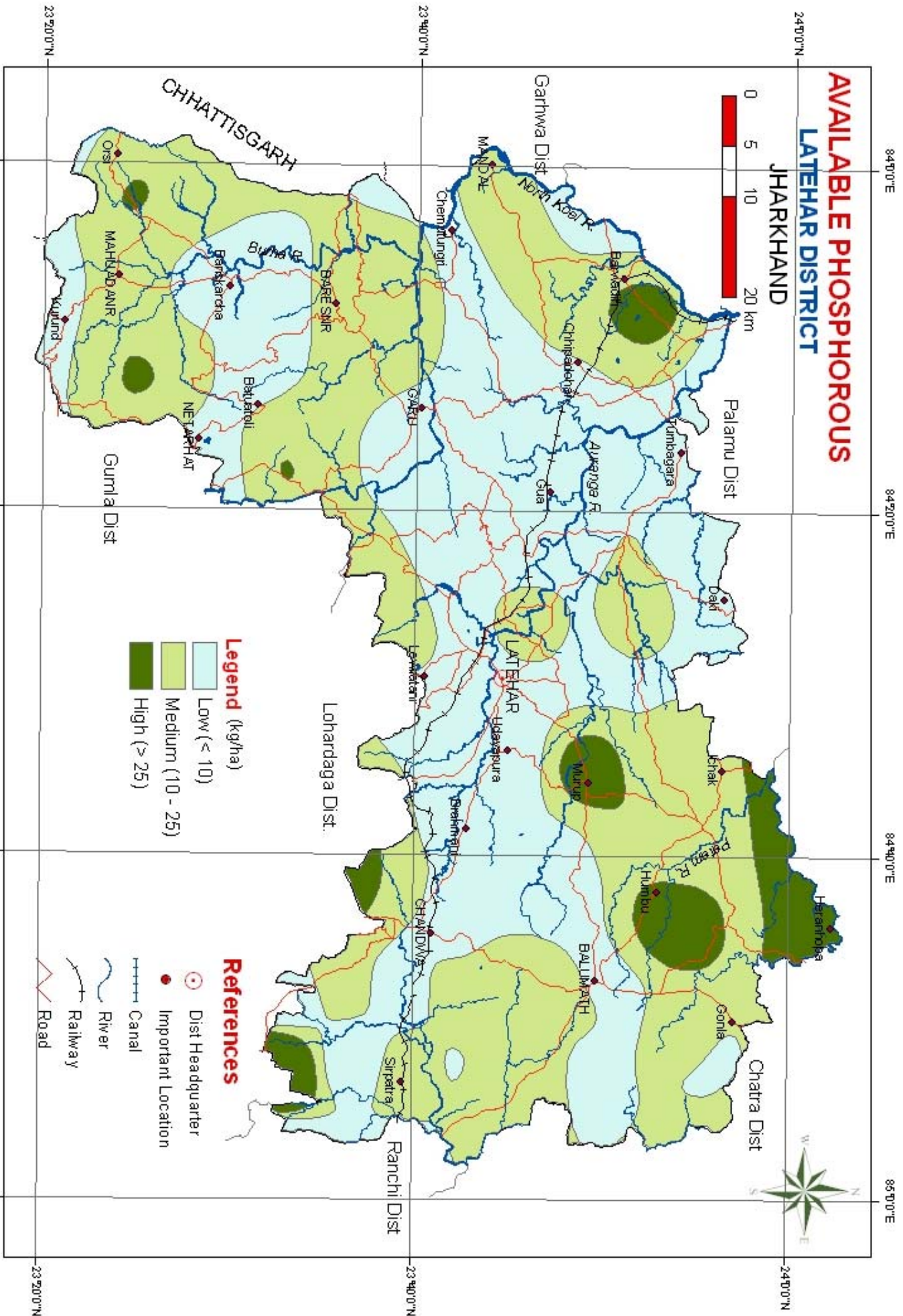
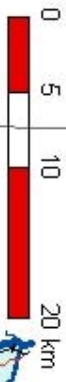
- Legend (kg/ha)**
- Low (< 280)
 - Medium (280 - 560)
 - High (> 560)

- References**
- Dist Headquarter
 - Important Location
 - Canal
 - River
 - Railway
 - Road

Fig. 4

AVAILABLE PHOSPHOROUS LATEHAR DISTRICT

JHARKHAND



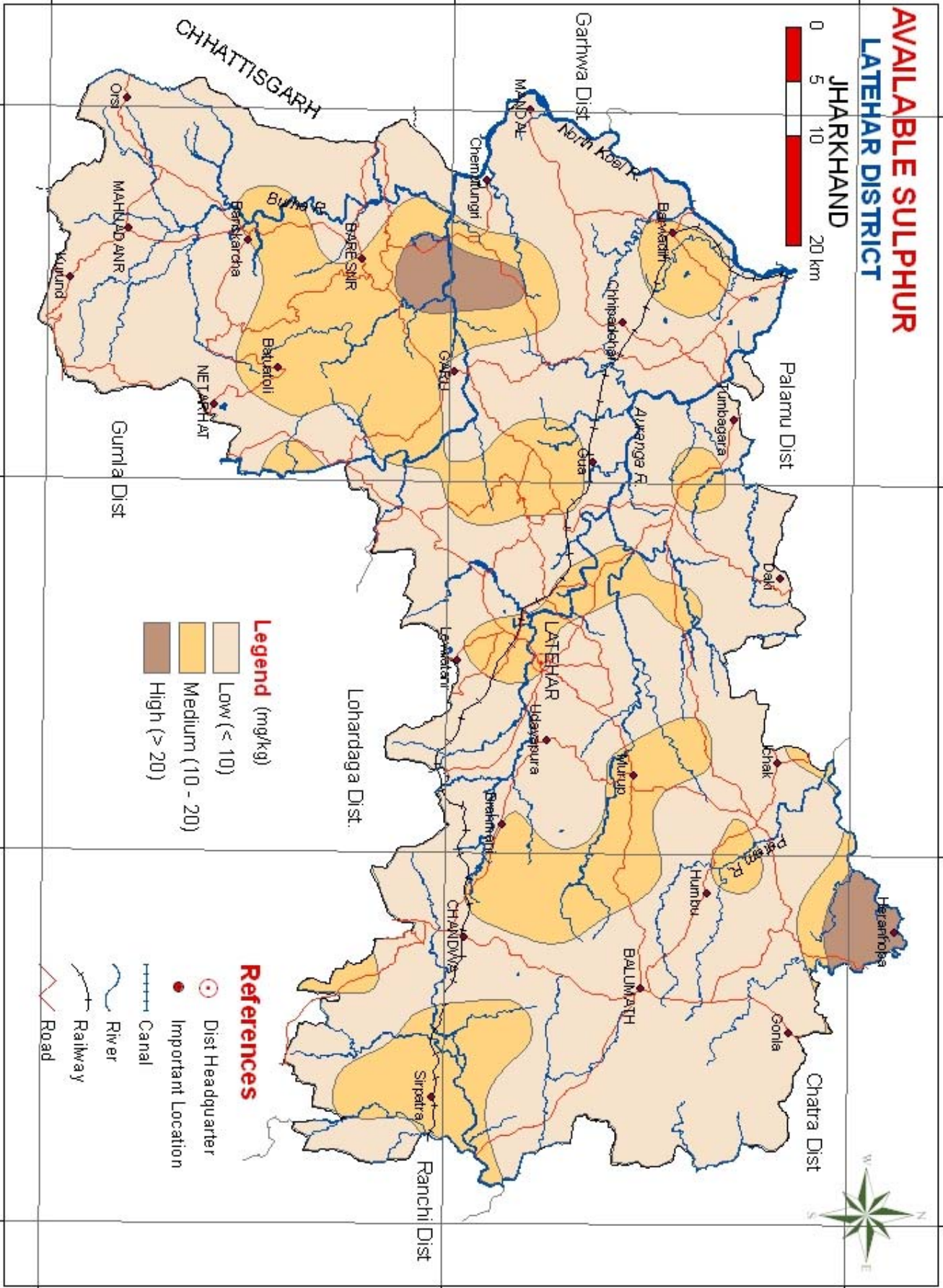
- Legend (kg/ha)**
- Low (< 10)
 - Medium (10 - 25)
 - High (> 25)

- References**
- Dist Headquarter
 - Important Location
 - Canal
 - River
 - Railway
 - Road

Fig. 5

AVAILABLE SULPHUR LATEHAR DISTRICT

JHARKHAND



- Legend (mg/kg)**
- Low (< 10)
 - Medium (10 - 20)
 - High (> 20)

- References**
- Dist Headquarter
 - Important Location
 - Canal
 - River
 - Railway
 - Road



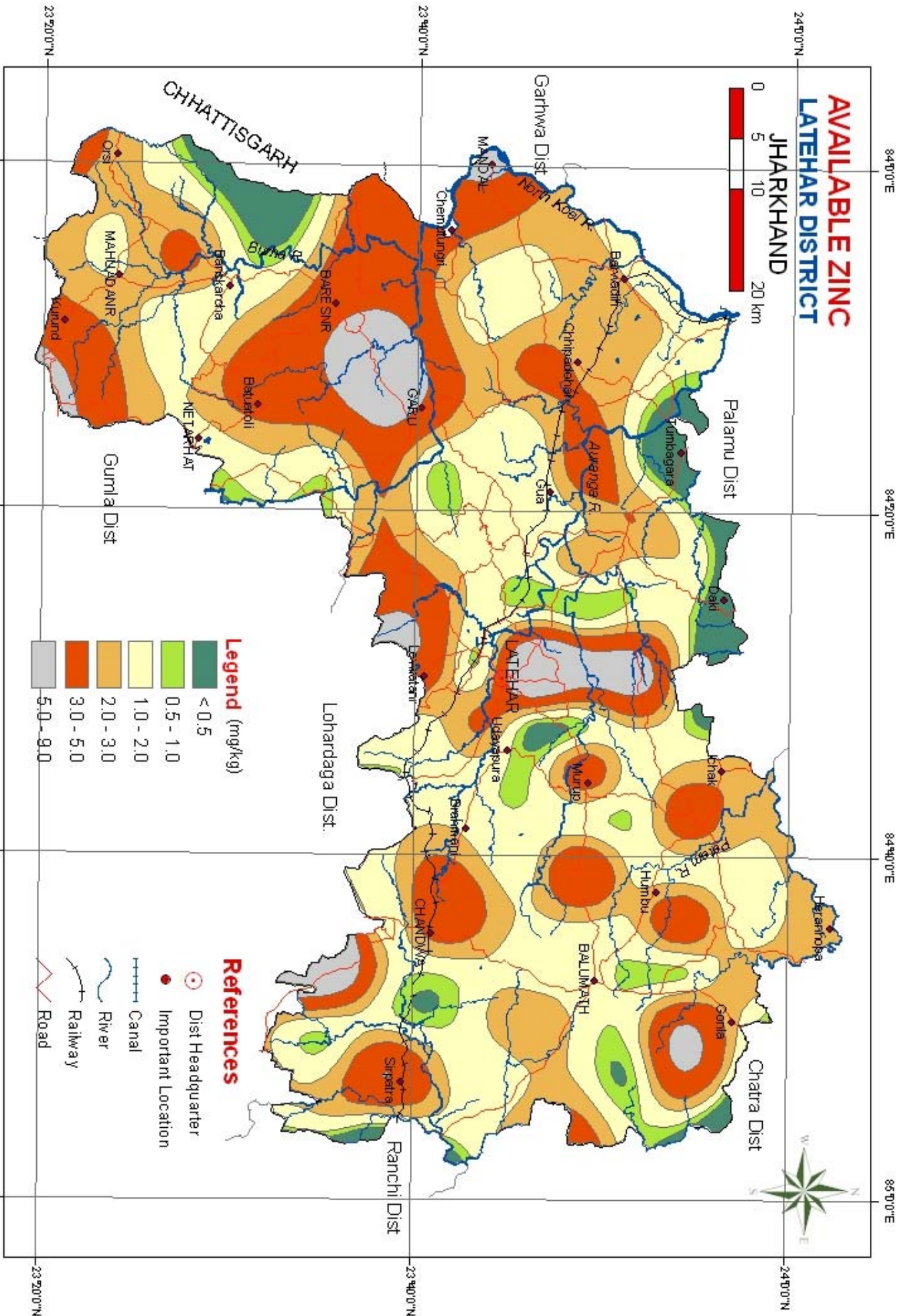
84°0'0"E 84°20'0"E 84°40'0"E 85°0'0"E

23°20'0"N 23°40'0"N 24°0'0"N

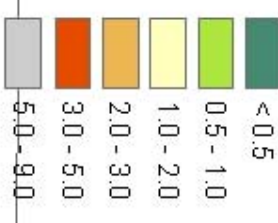
Fig. 7

AVAILABLE ZINC LATEHAR DISTRICT

JHARKHAND



Legend (mg/kg)



References

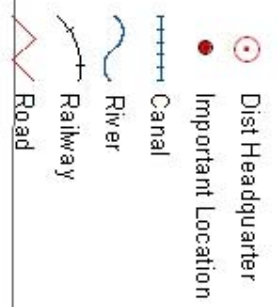


Fig. 10

ORGANIC CARBON LATEHAR DISTRICT

24°0'0"N

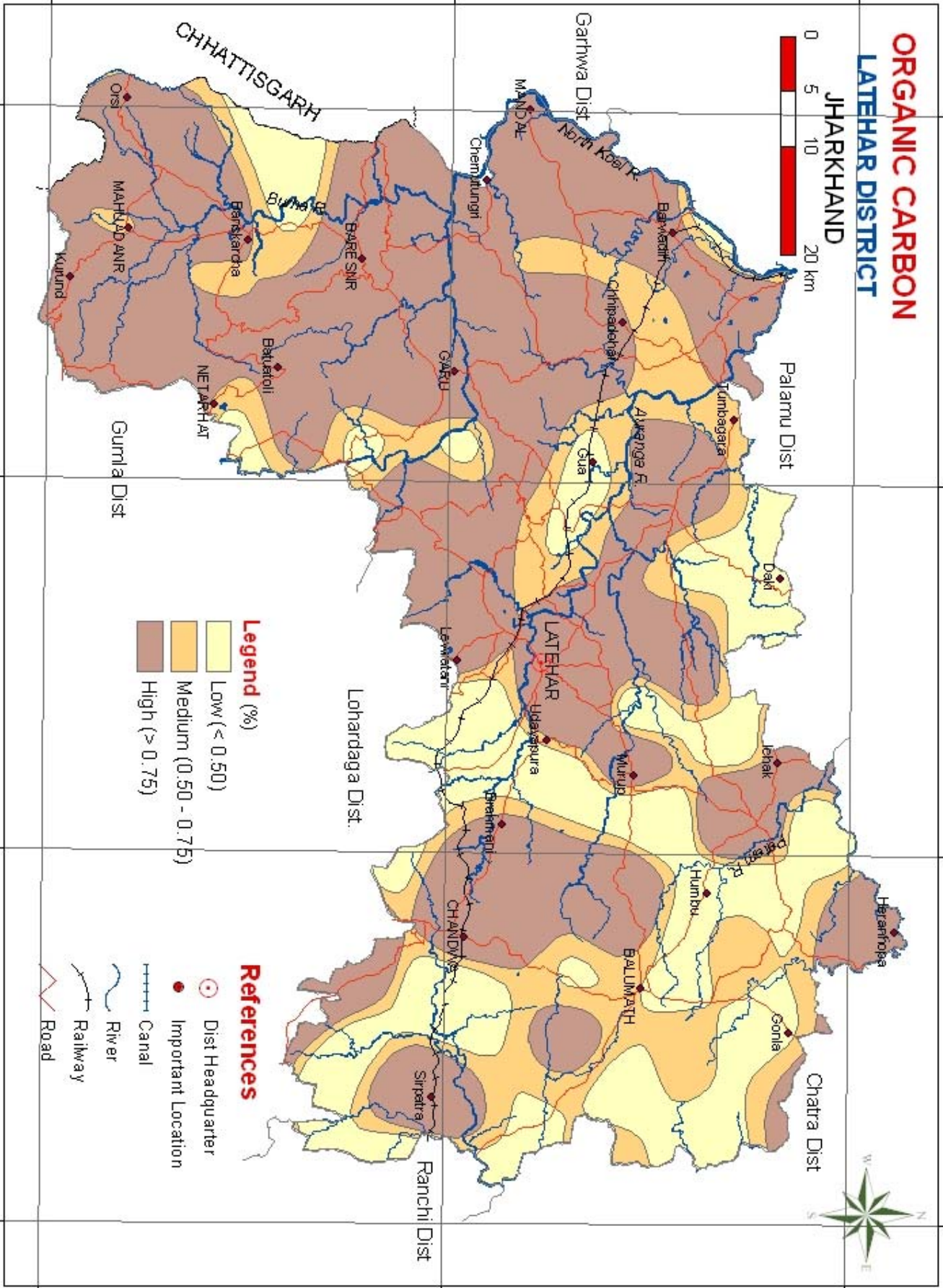
24°0'0"N

84°0'0"E

84°20'0"E

84°40'0"E

85°0'0"E



- Legend (%)**
- Low (< 0.50)
 - Medium (0.50 - 0.75)
 - High (> 0.75)

- References**
- Dist Headquarter
 - Important Location
 - Canal
 - River
 - Railway
 - Road

Fig. 3

84°0'0"E

84°20'0"E

84°40'0"E

85°0'0"E

23°20'0"N

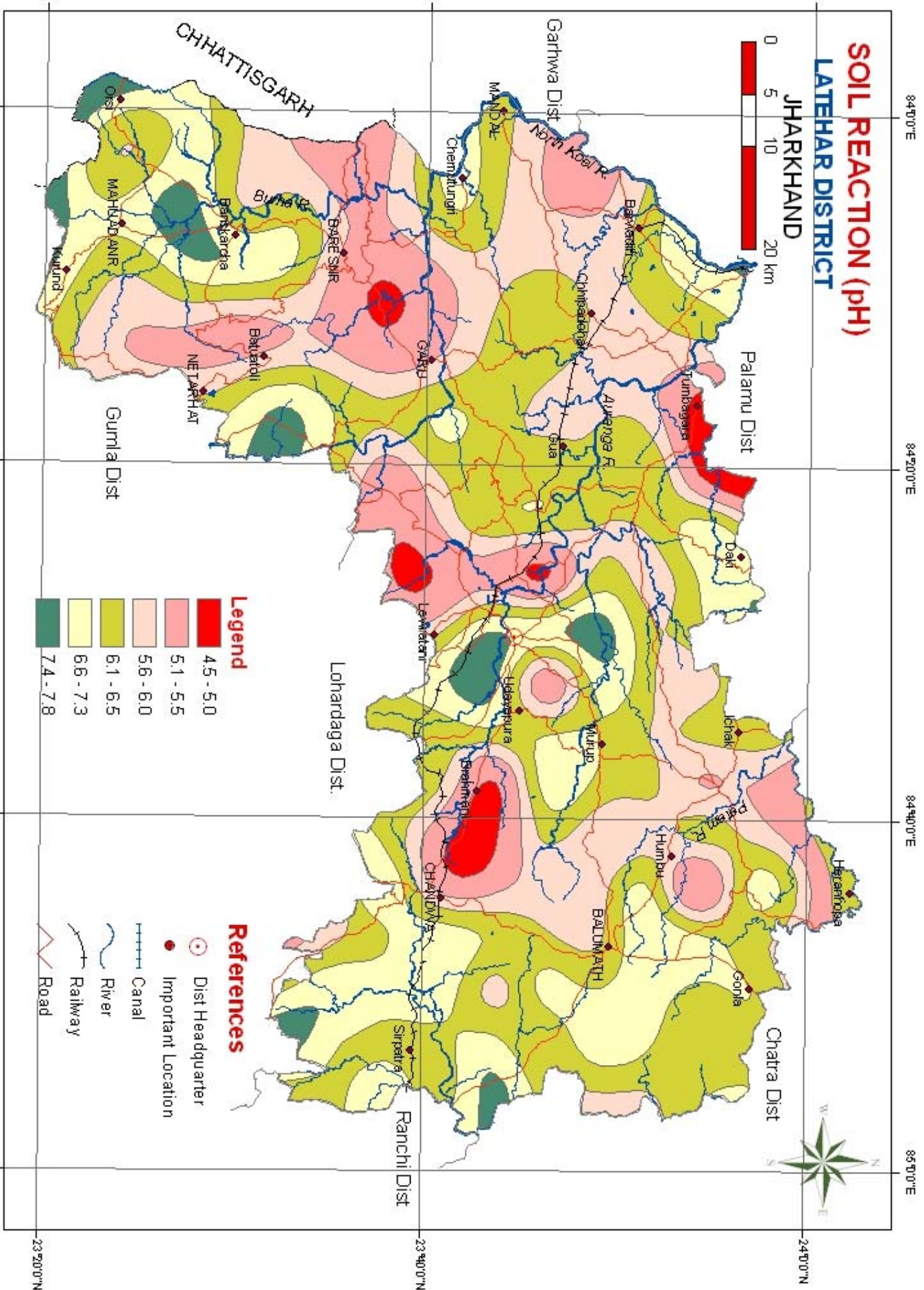
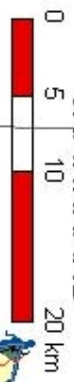
23°20'0"N

23°40'0"N

23°40'0"N

SOIL REACTION (pH) LATEHAR DISTRICT

JHARKHAND



Legend

Red	4.5 - 5.0
Light Red	5.1 - 5.5
Orange	5.6 - 6.0
Yellow	6.1 - 6.5
Light Green	6.6 - 7.3
Dark Green	7.4 - 7.8

References

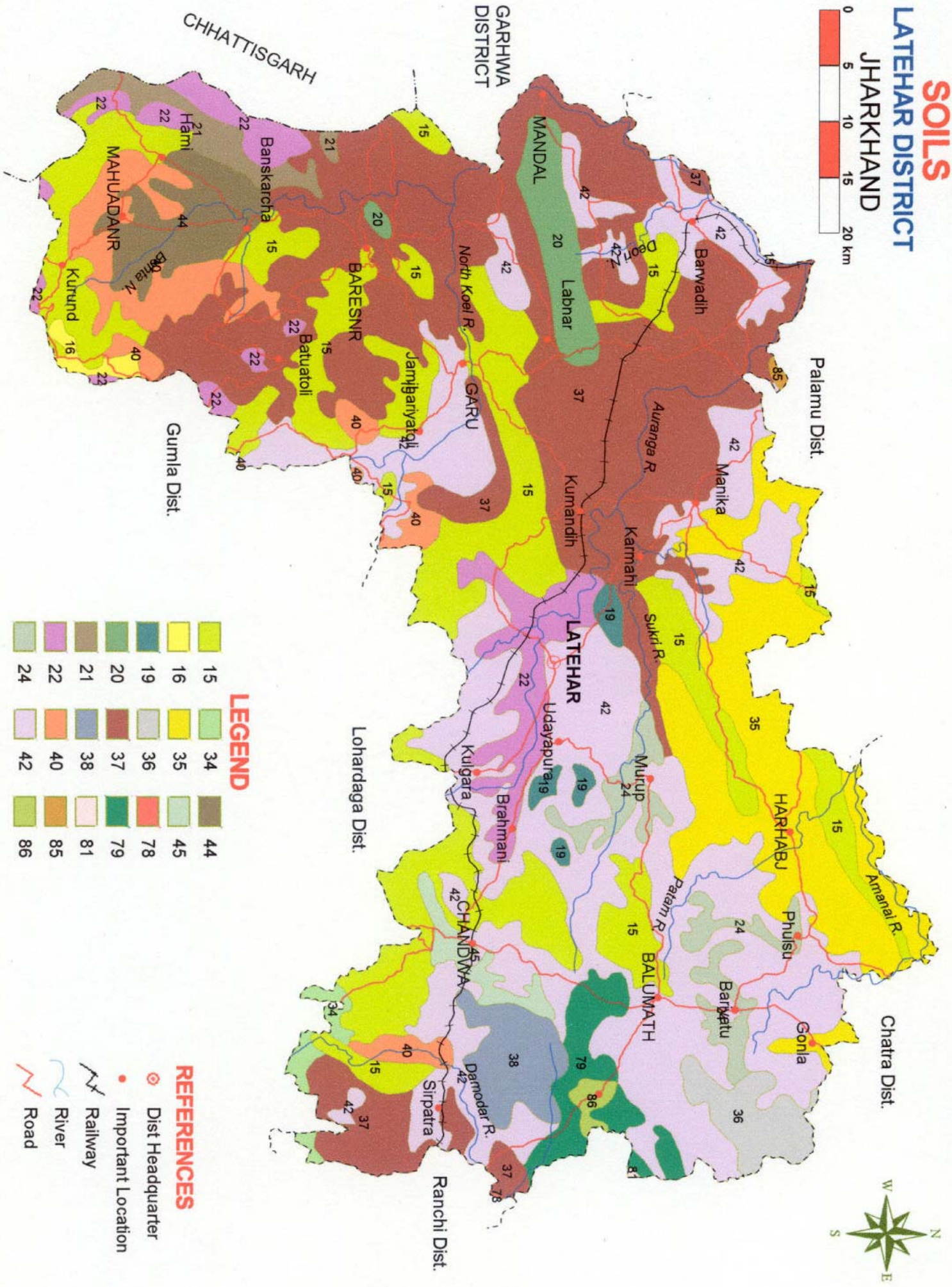
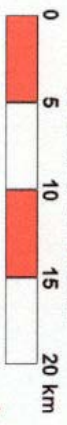
Circle with dot	Dist Headquarter
Red dot	Important Location
Circle with cross	Canal
Blue line	River
Black line	Railway
Red line	Road

Fig. 2

SOILS

LATEHAR DISTRICT

JHARKHAND



LEGEND

15	34	44
16	35	45
19	36	78
20	37	79
21	38	81
22	40	85
24	42	86

REFERENCES

- Dist Headquarter
- Important Location
- Railway
- River
- Road

Fig. - 1