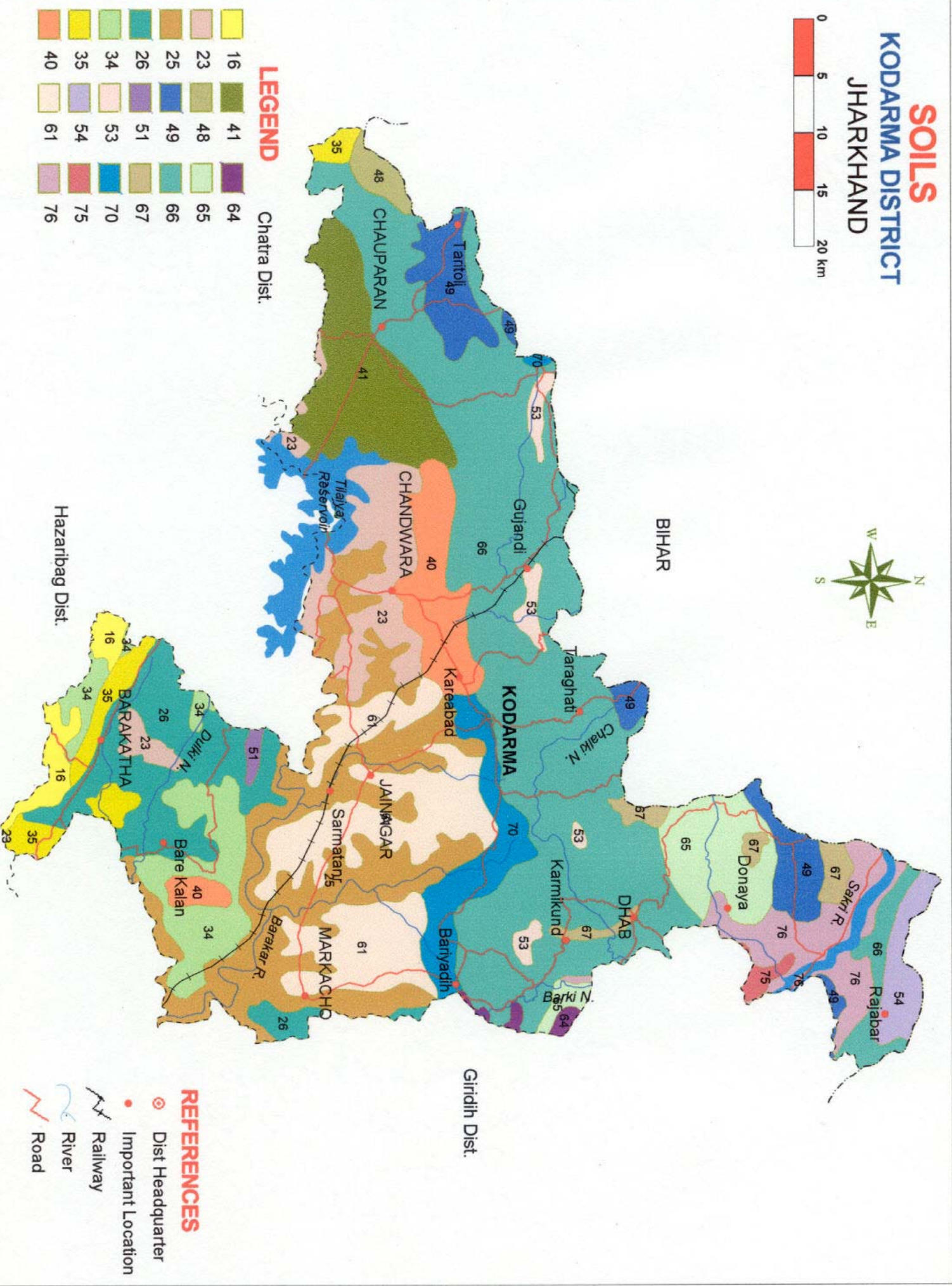
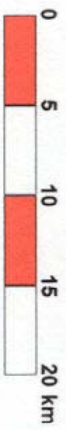


Fig. 2

SOILS

KODARMA DISTRICT JHARKHAND



LEGEND

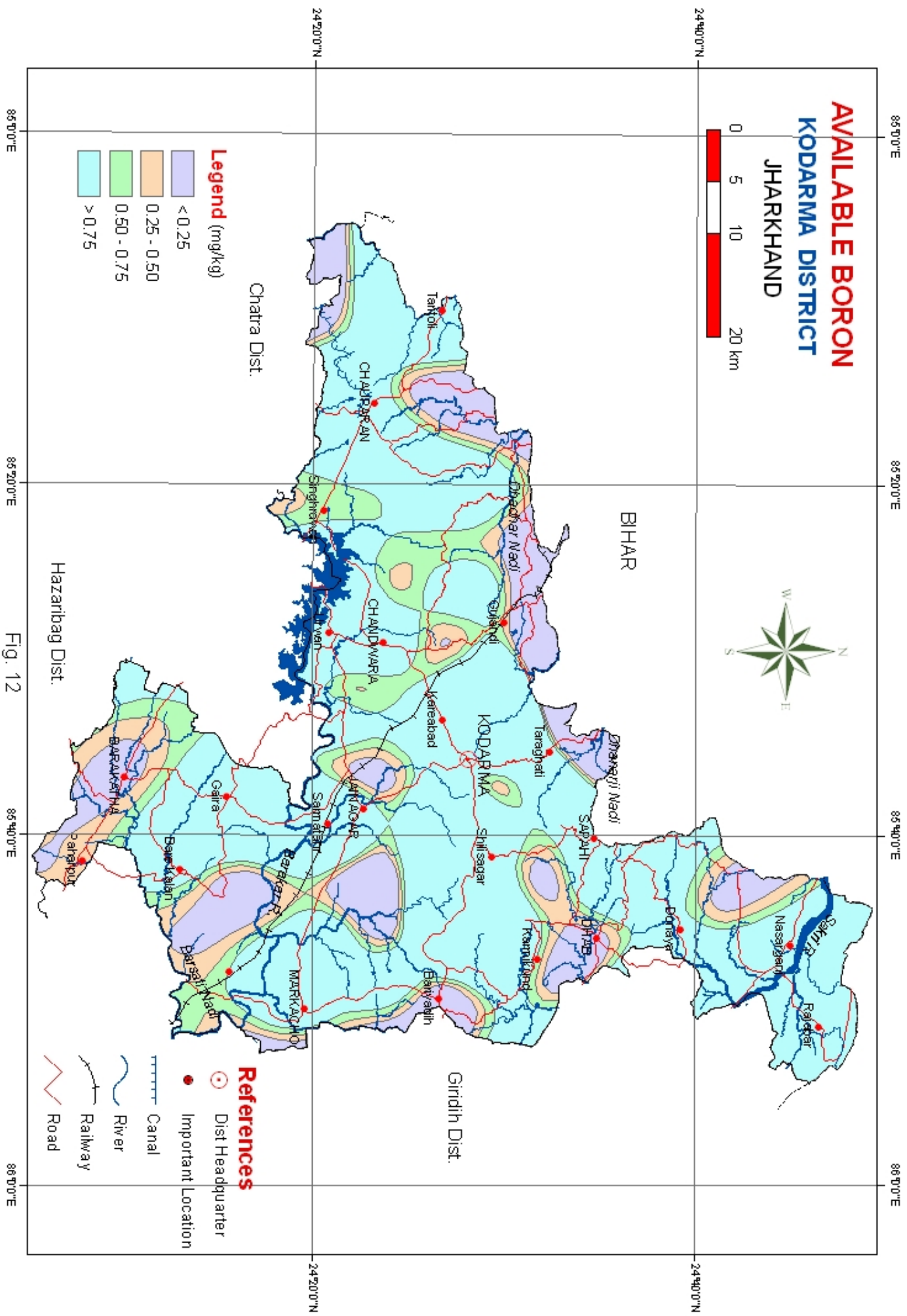
16	41	64
23	48	65
25	49	66
26	51	67
34	53	70
35	54	75
40	61	76

Chattra Dist.

REFERENCES

- Dist Headquarter
- Important Location
- Railway
- River
- Road

Fig. - 1



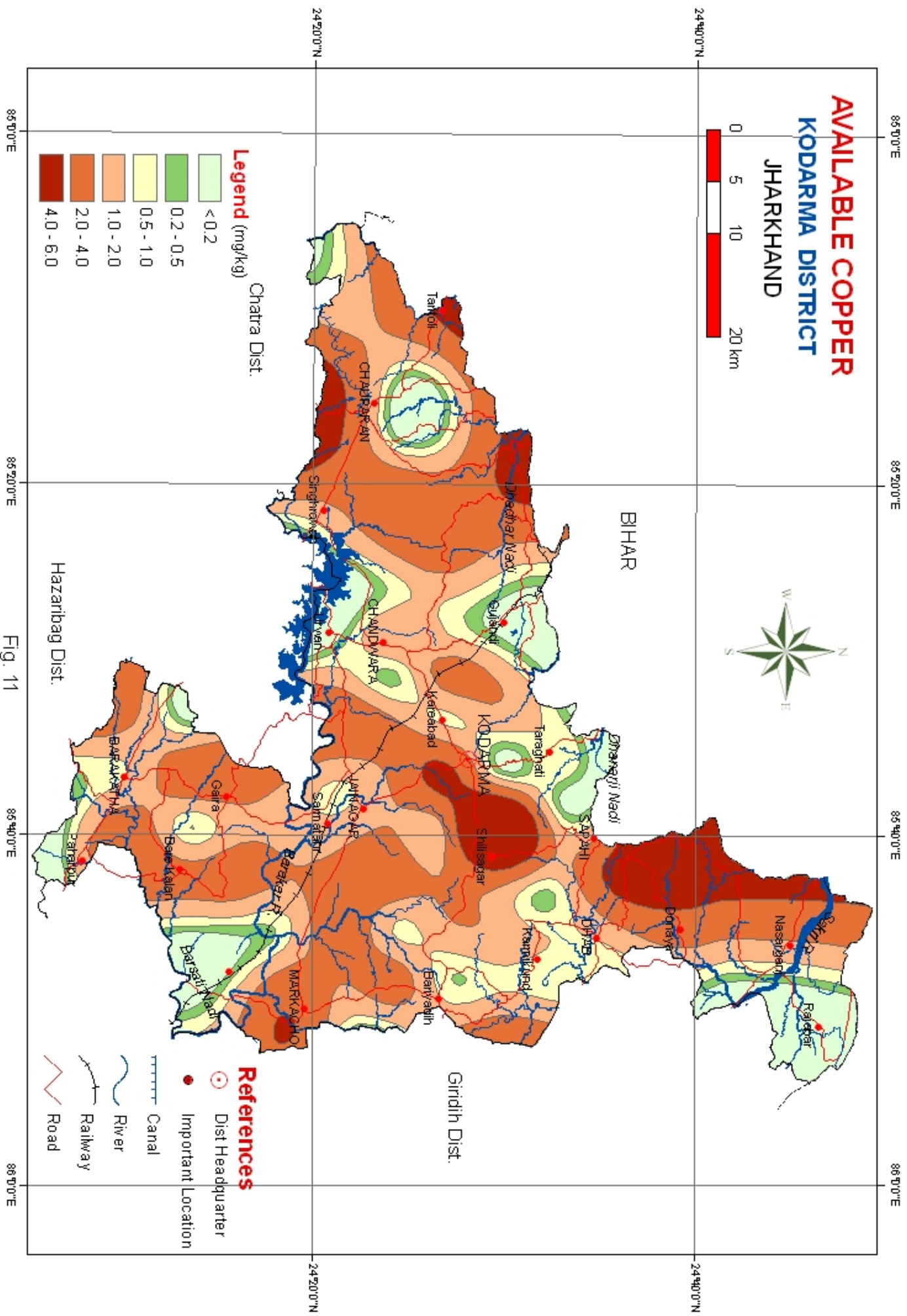


Fig. 11

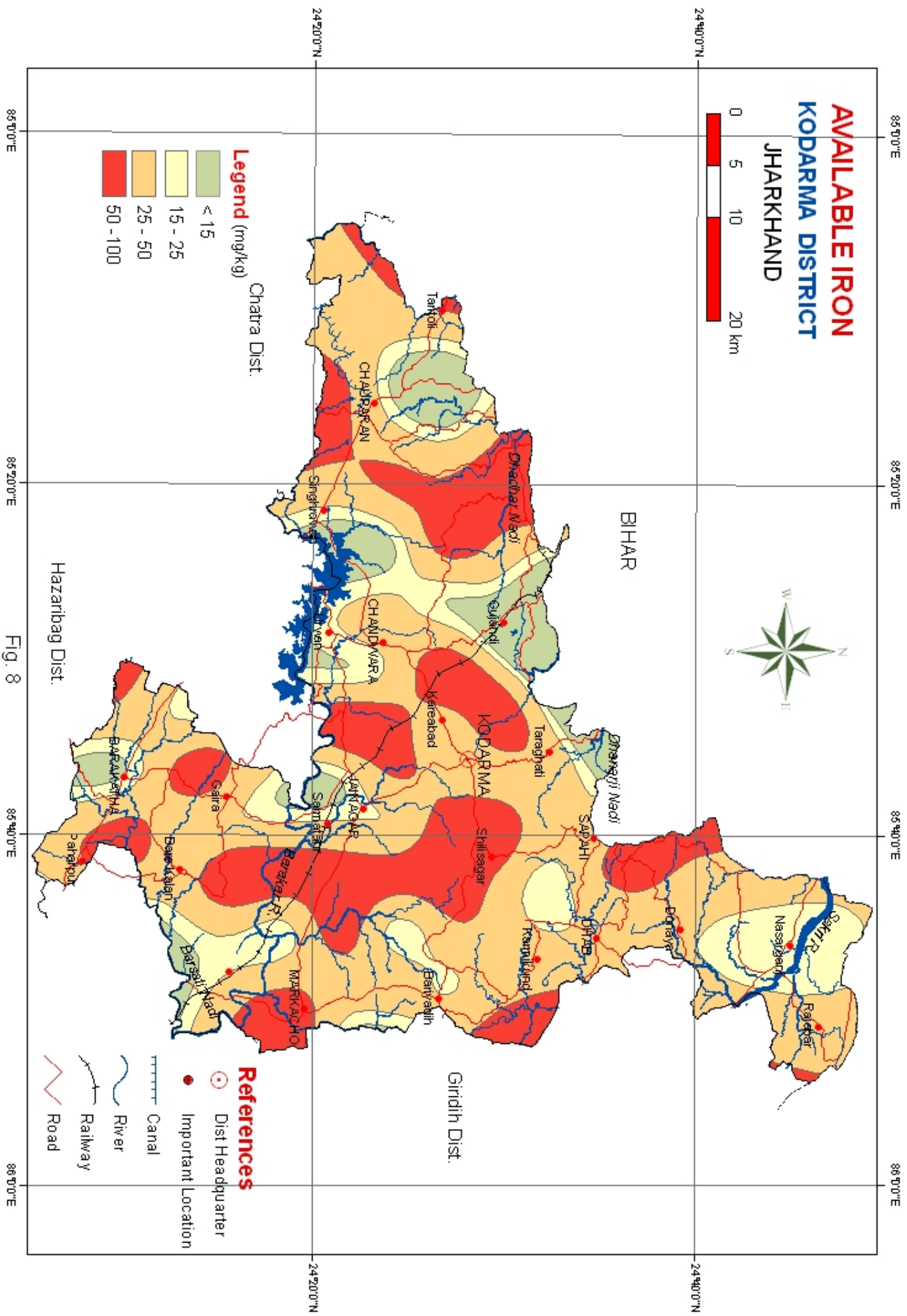
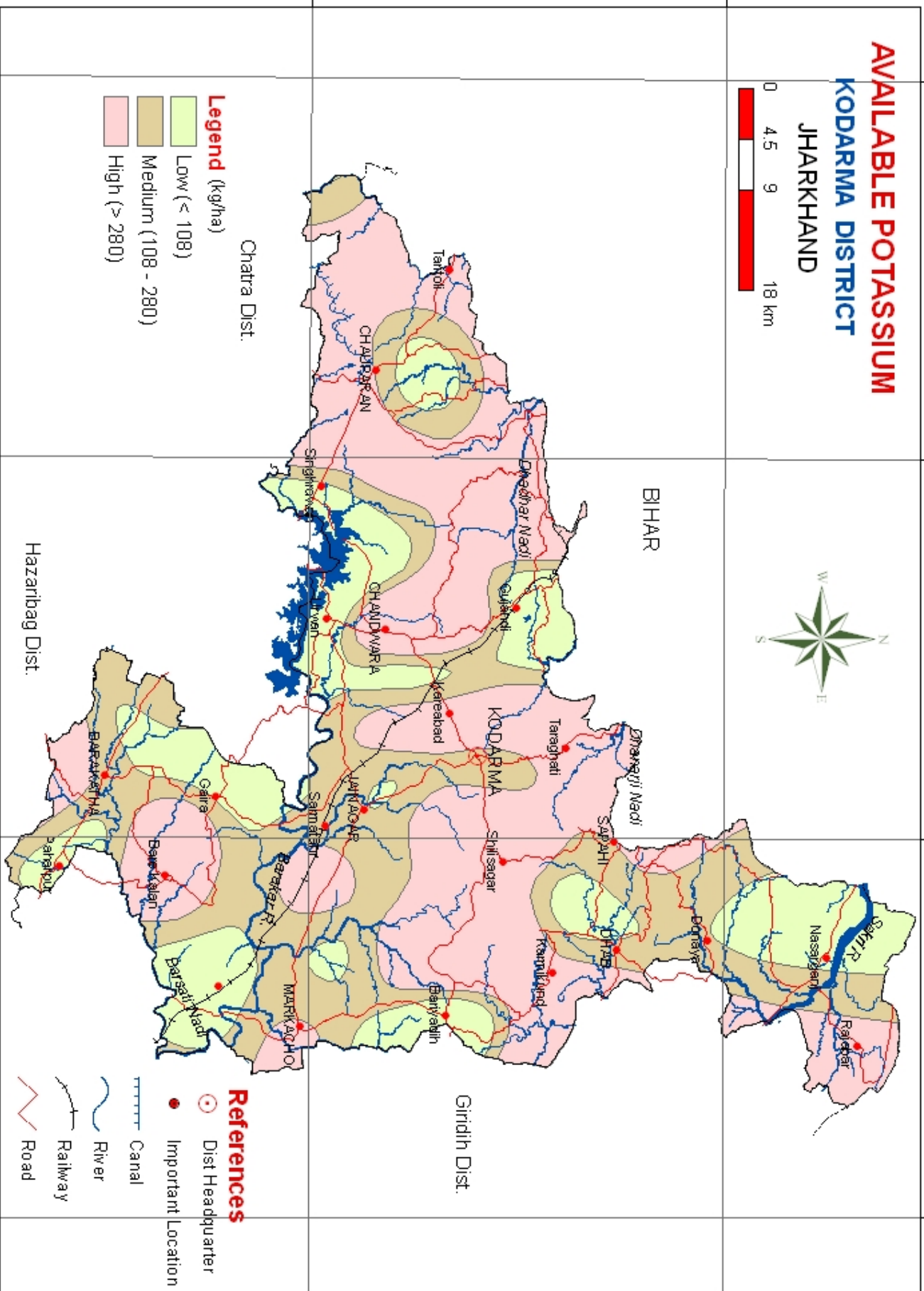
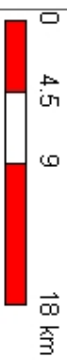


Fig. 8

AVAILABLE POTASSIUM

KODARMA DISTRICT

JHARKHAND



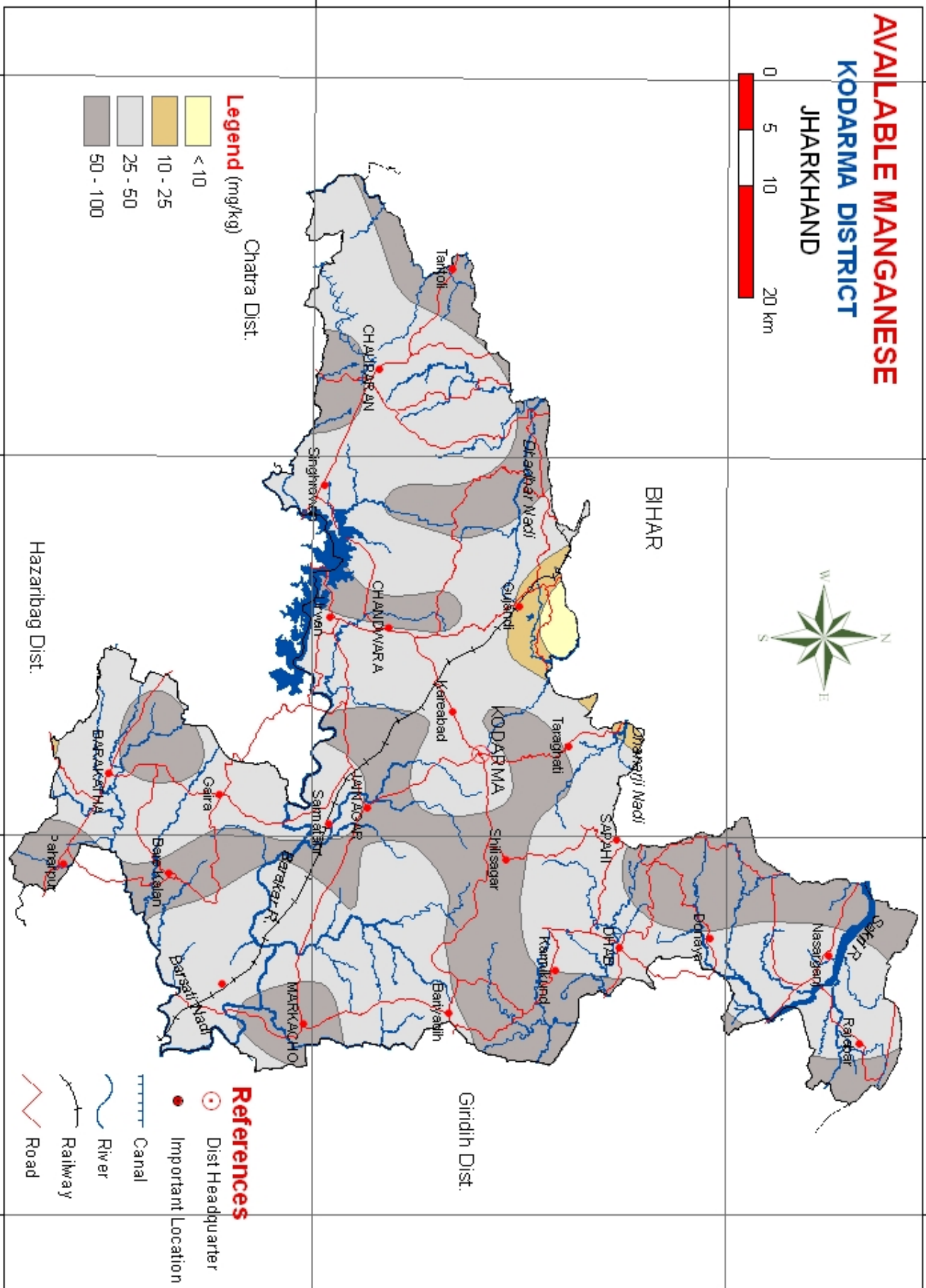
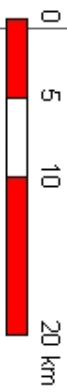
- Legend (kg/ha)**
- Low (< 108)
 - Medium (108 - 280)
 - High (> 280)

- References**
- Dist Headquarter
 - Imp ortant Location
 - Canal
 - River
 - Railway
 - Road

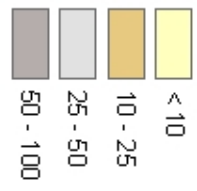
Fig. 6

AVAILABLE MANGANESE

KODARMA DISTRICT JHARKHAND



Legend (mg/kg)



References

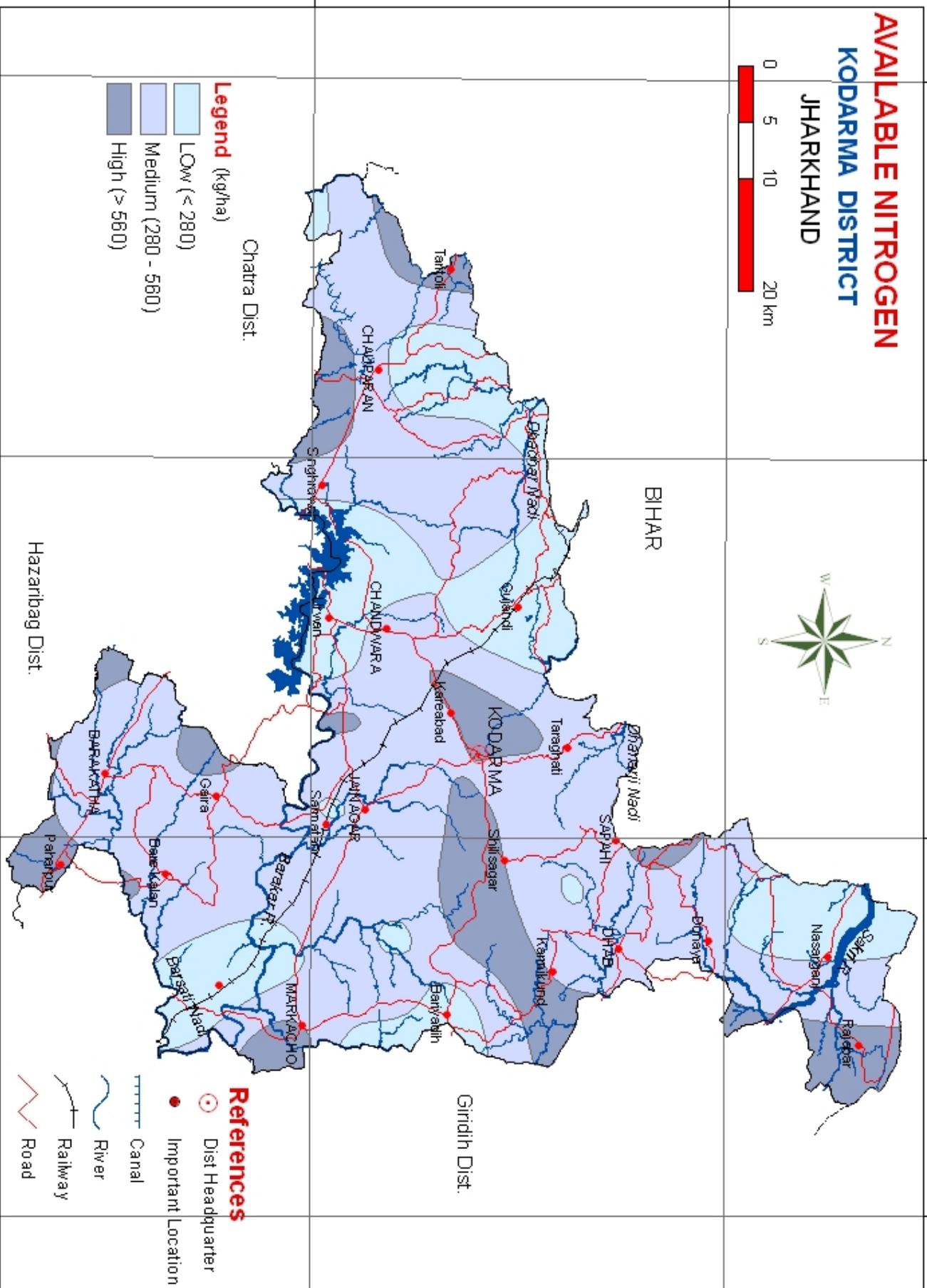
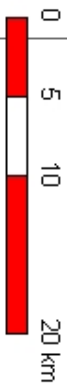
- Dist Headquarter
- Important Location
- Canal
- River
- Railway
- Road

Fig. 9

AVAILABLE NITROGEN

KODARMA DISTRICT

JHARKHAND



- Legend** (kg/ha)
- LOW (< 280)
 - Medium (280 - 560)
 - High (> 560)

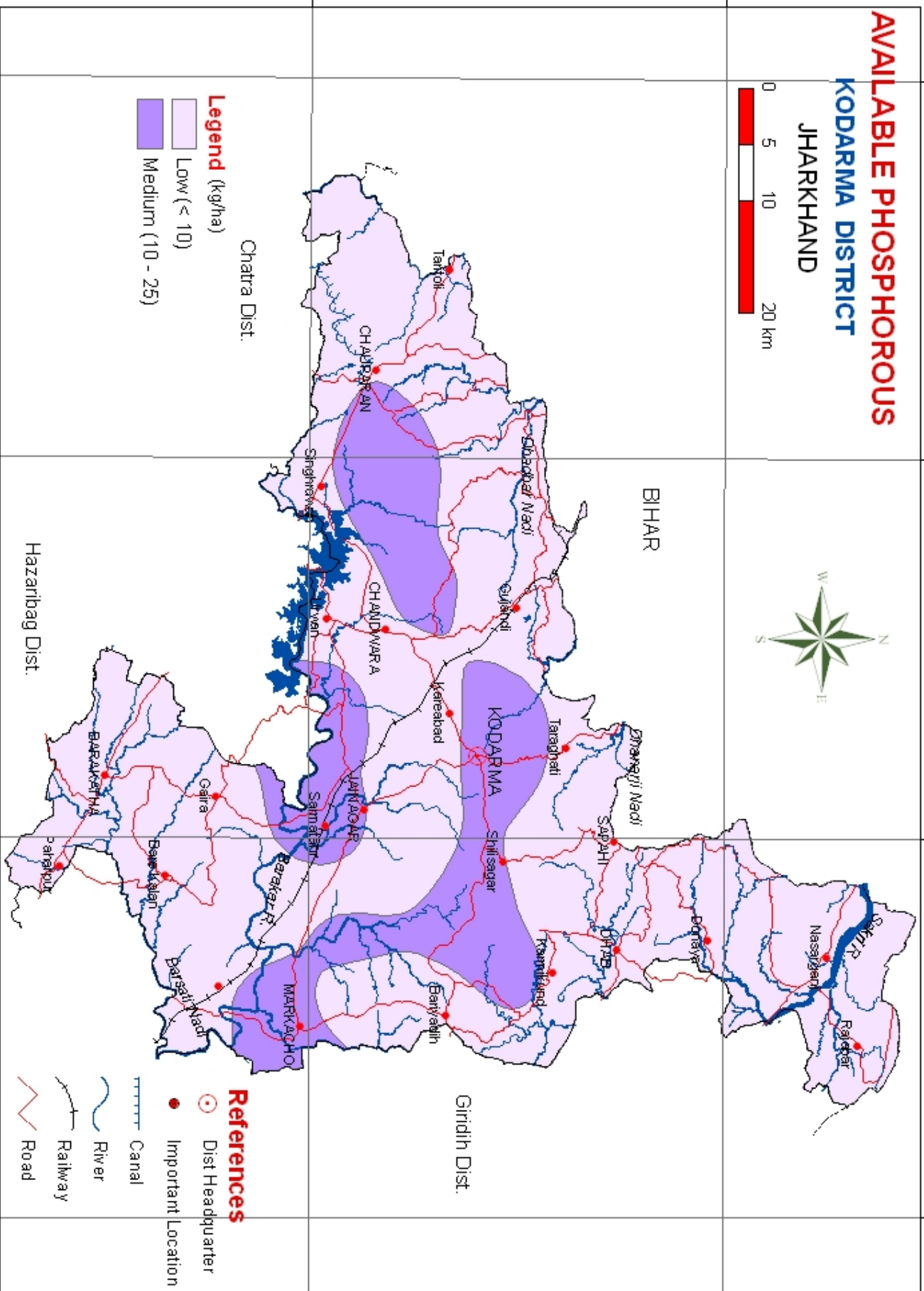
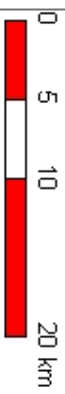
- References**
- Dist Headquarter
 - Important Location
 - Canal
 - River
 - Railway
 - Road

Fig. 4

AVAILABLE PHOSPHOROUS

KODARMA DISTRICT

JHARKHAND



Legend (kg/ha)
Low (< 10)
Medium (10 - 25)

References
○ Dist Headquarter
● Important Location

Canal
River
Railway
Road

85°00'E 85°20'E 85°40'E 86°00'E
24°20'N 24°40'N

Fig. 5

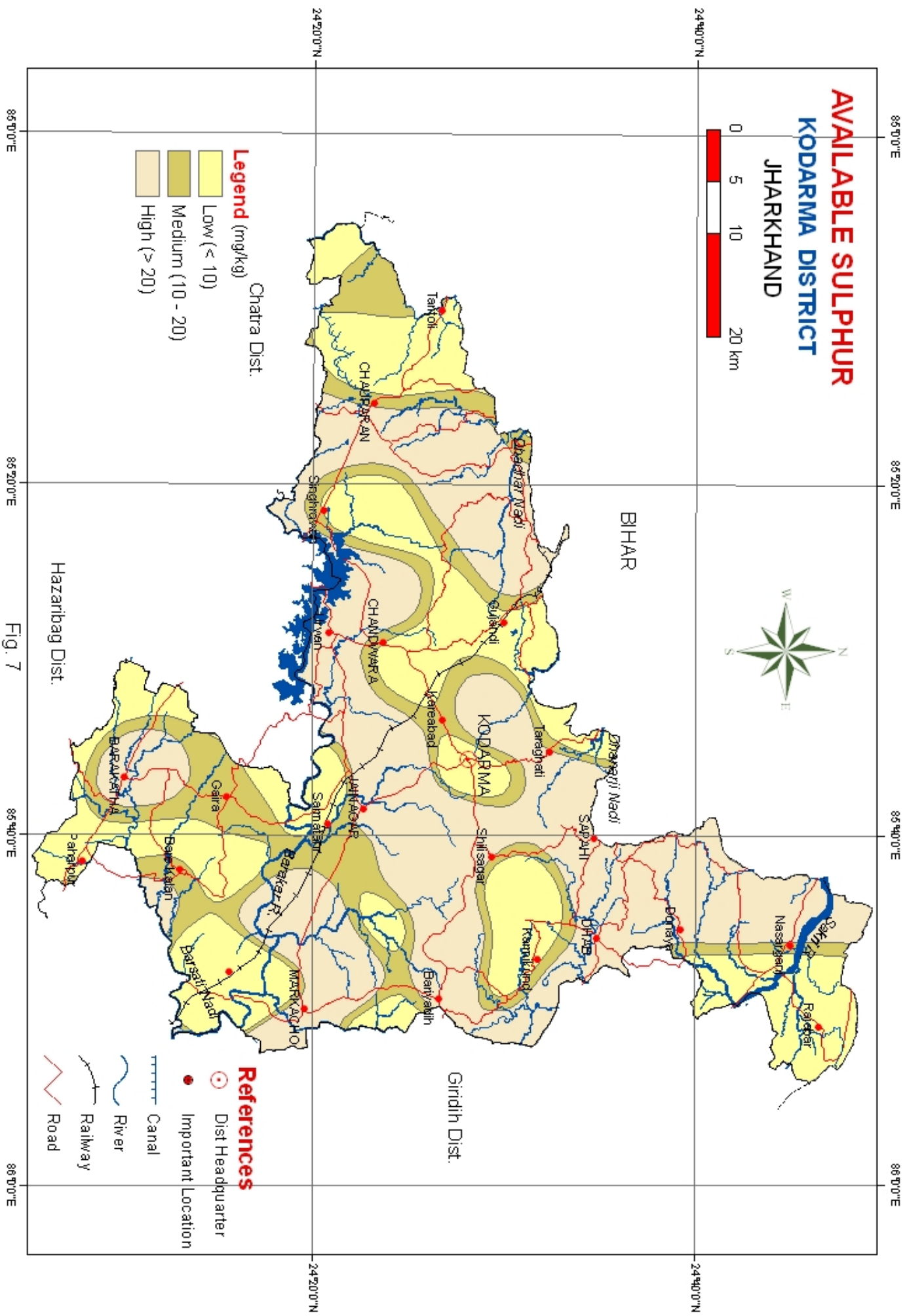
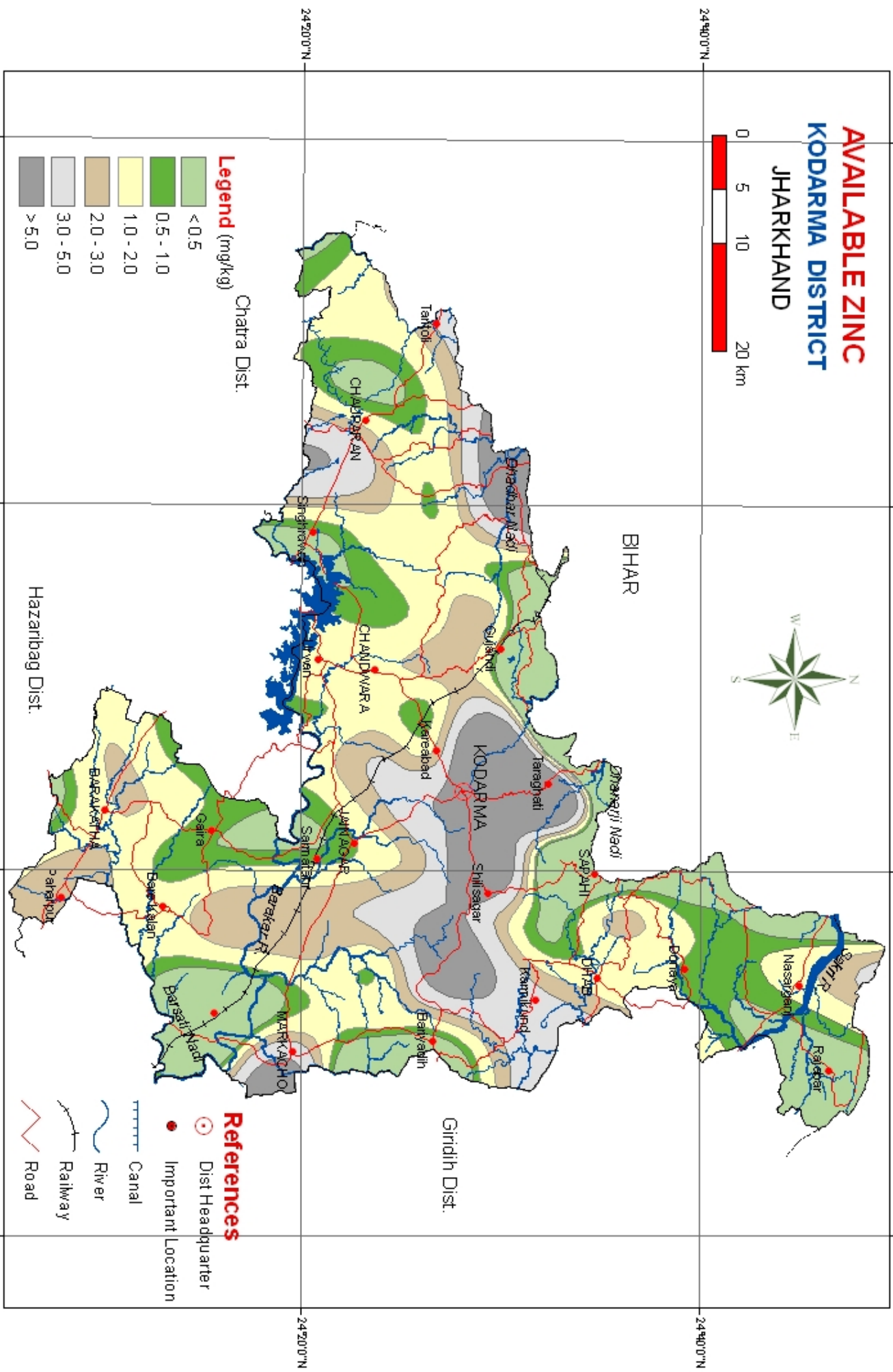
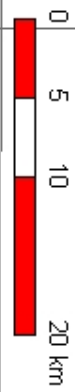


Fig. 7

AVAILABLE ZINC KODARMA DISTRICT JHARKHAND



- Legend (mg/kg)**
- < 0.5
 - 0.5 - 1.0
 - 1.0 - 2.0
 - 2.0 - 3.0
 - 3.0 - 5.0
 - > 5.0

- References**
- Dist Headquarter
 - Important Location
 - ▬ Canals
 - ▬ River
 - ▬ Railway
 - ▬ Road

Fig. 10

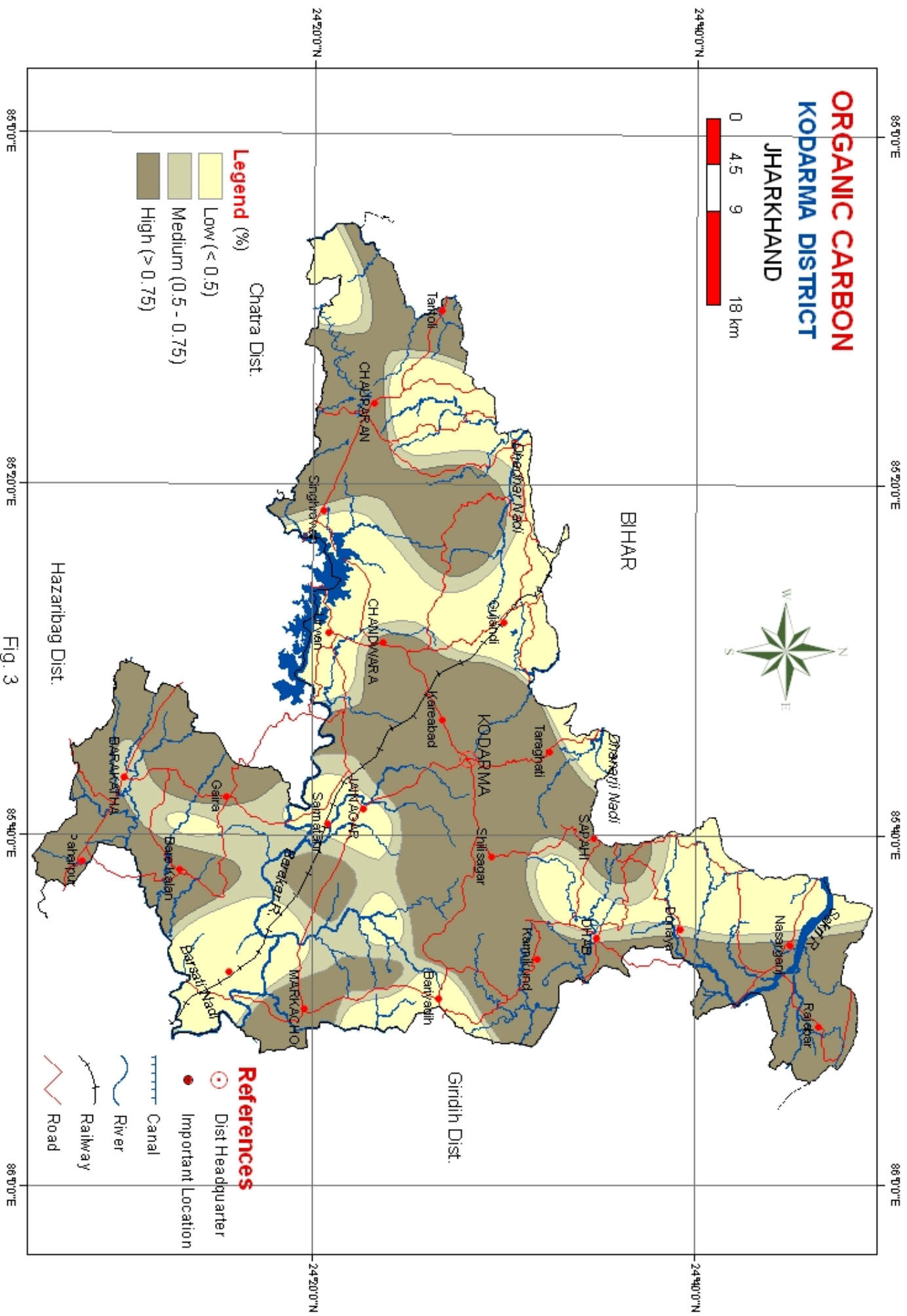


Fig. 3