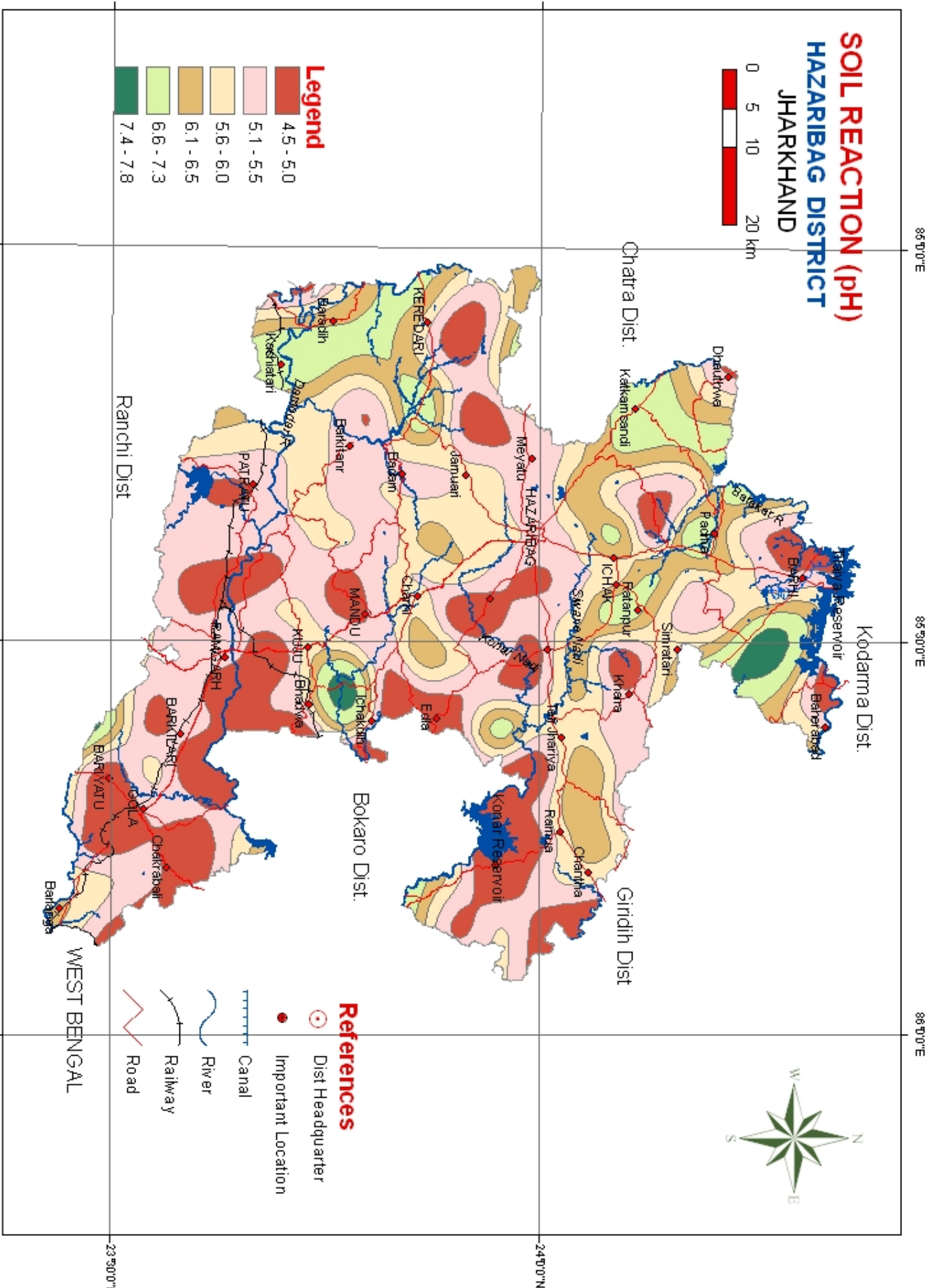
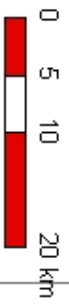


SOIL REACTION (pH) HAZARIBAG DISTRICT JHARKHAND



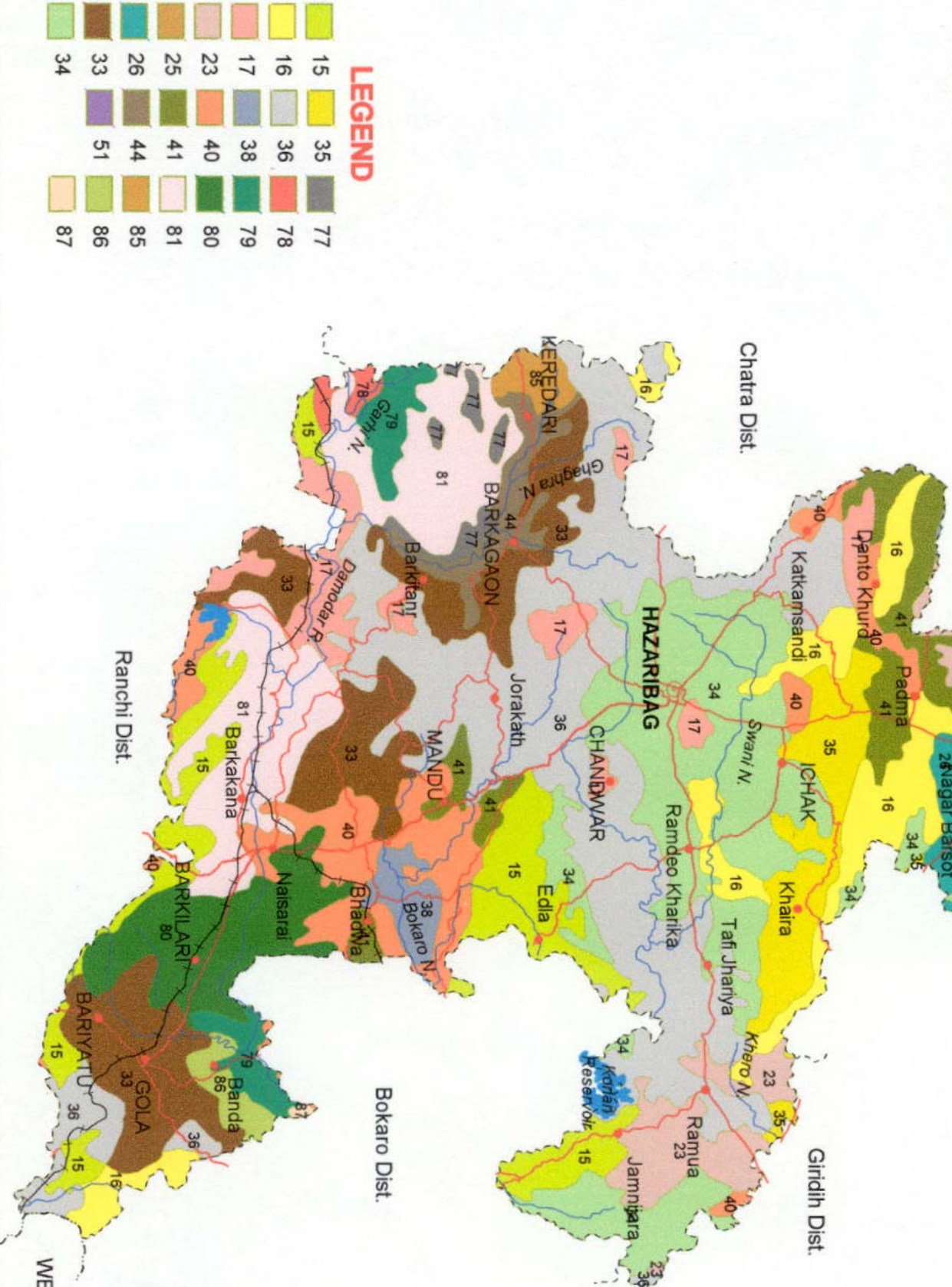
- References**
- Dist Headquarter
 - Important Location
 - ▬ Canal
 - ~ River
 - Railway
 - ▬ Road

Fig. 2

SOILS

HAZARIBAG DISTRICT

JHARKHAND



LEGEND

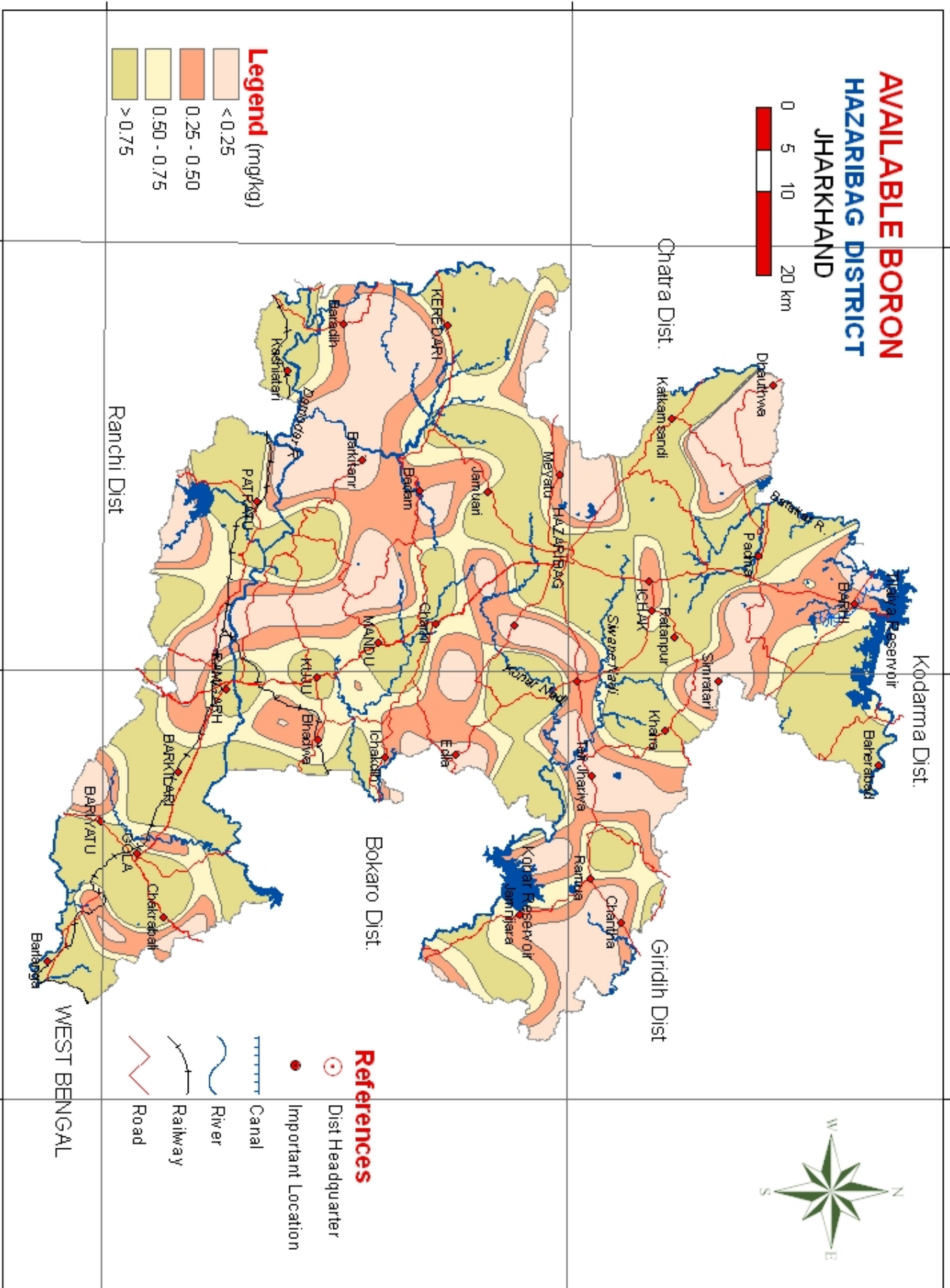
15	35	77
16	36	78
17	38	79
23	40	80
25	41	81
26	44	85
33	51	86
34		87

- REFERENCES**
- Dist Headquarter
 - Important Location
 - Railway
 - River
 - Road

Fig. - 1

WEST BENGAL

AVAILABLE BORON HAZARIBAG DISTRICT JHARKHAND



- Legend (mg/kg)**
- < 0.25
 - 0.25 - 0.50
 - 0.50 - 0.75
 - > 0.75

- References**
- Dist Headquarter
 - Important Location
 - Canal
 - River
 - Railway
 - Road



Fig. 12

85°0'0"E

85°30'0"E

86°0'0"E

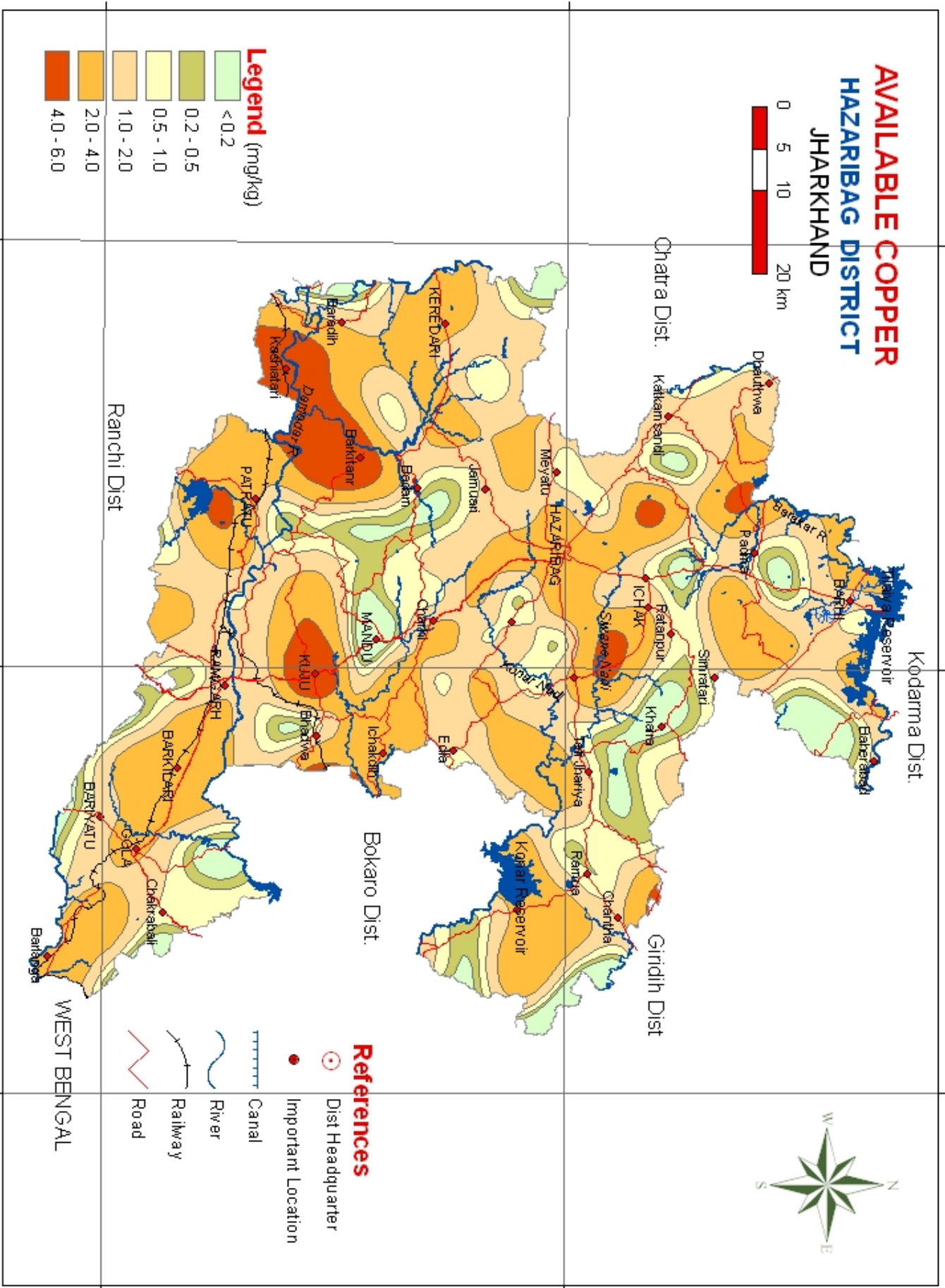
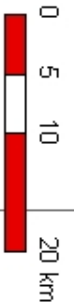
23°30'0"N

24°0'0"N

23°30'0"N

24°0'0"N

AVAILABLE COPPER HAZARIBAG DISTRICT JHARKHAND



Legend (mg/kg)

Light Green	< 0.2
Light Yellow-Green	0.2 - 0.5
Yellow	0.5 - 1.0
Light Orange	1.0 - 2.0
Orange	2.0 - 4.0
Dark Orange/Red	4.0 - 6.0

References

Circle with dot	Dist Headquarter
Red dot	Important Location
Blue line with dashes	Canal
Blue wavy line	River
Black line with cross-ticks	Railway
Red zigzag line	Road

Fig. 11

85°00'E

85°30'E

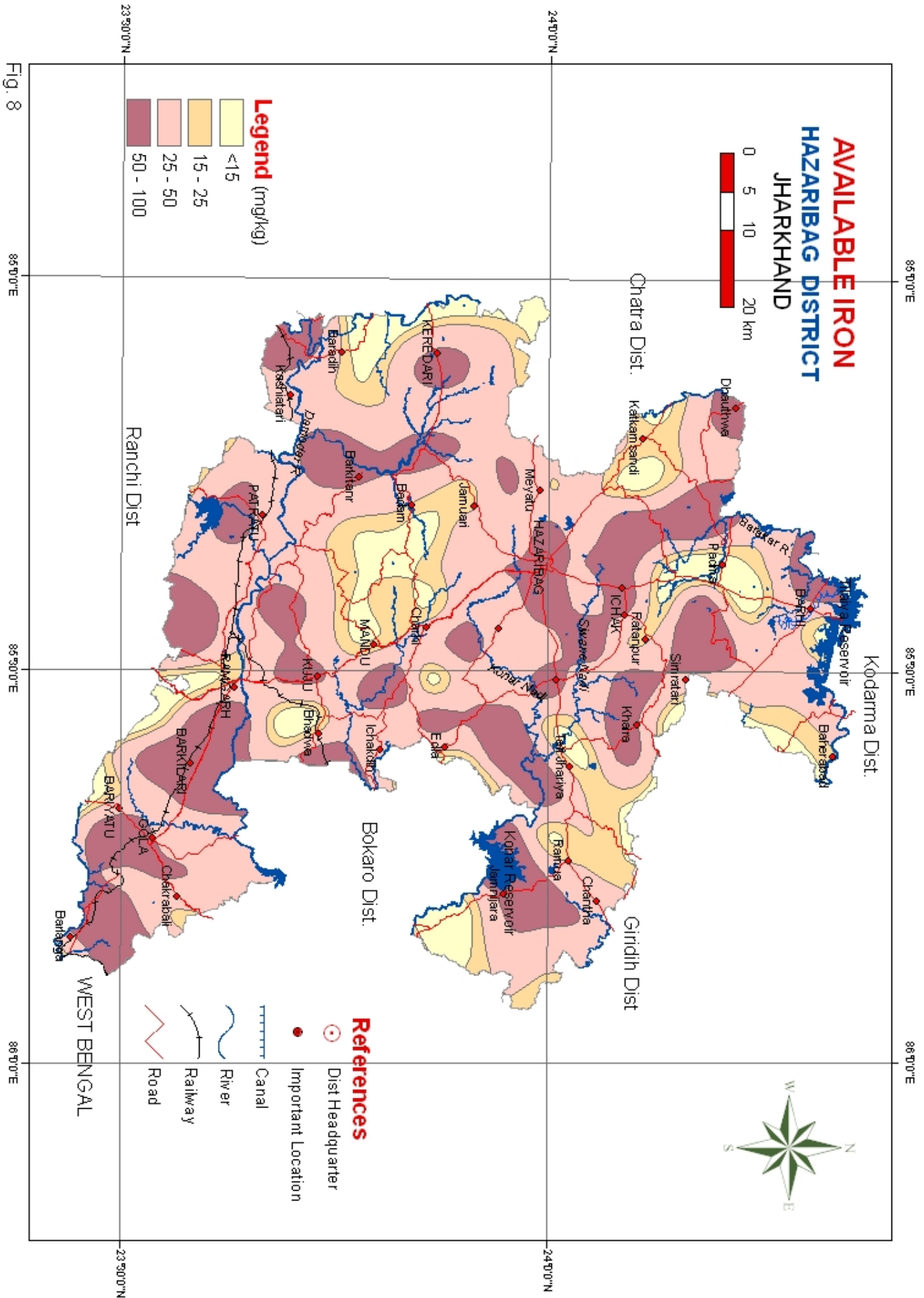
86°00'E

23°30'0"N

24°0'0"N

23°30'0"N

24°0'0"N



85°00'E

85°30'E

86°00'E

24°00'N

23°30'N

24°00'N

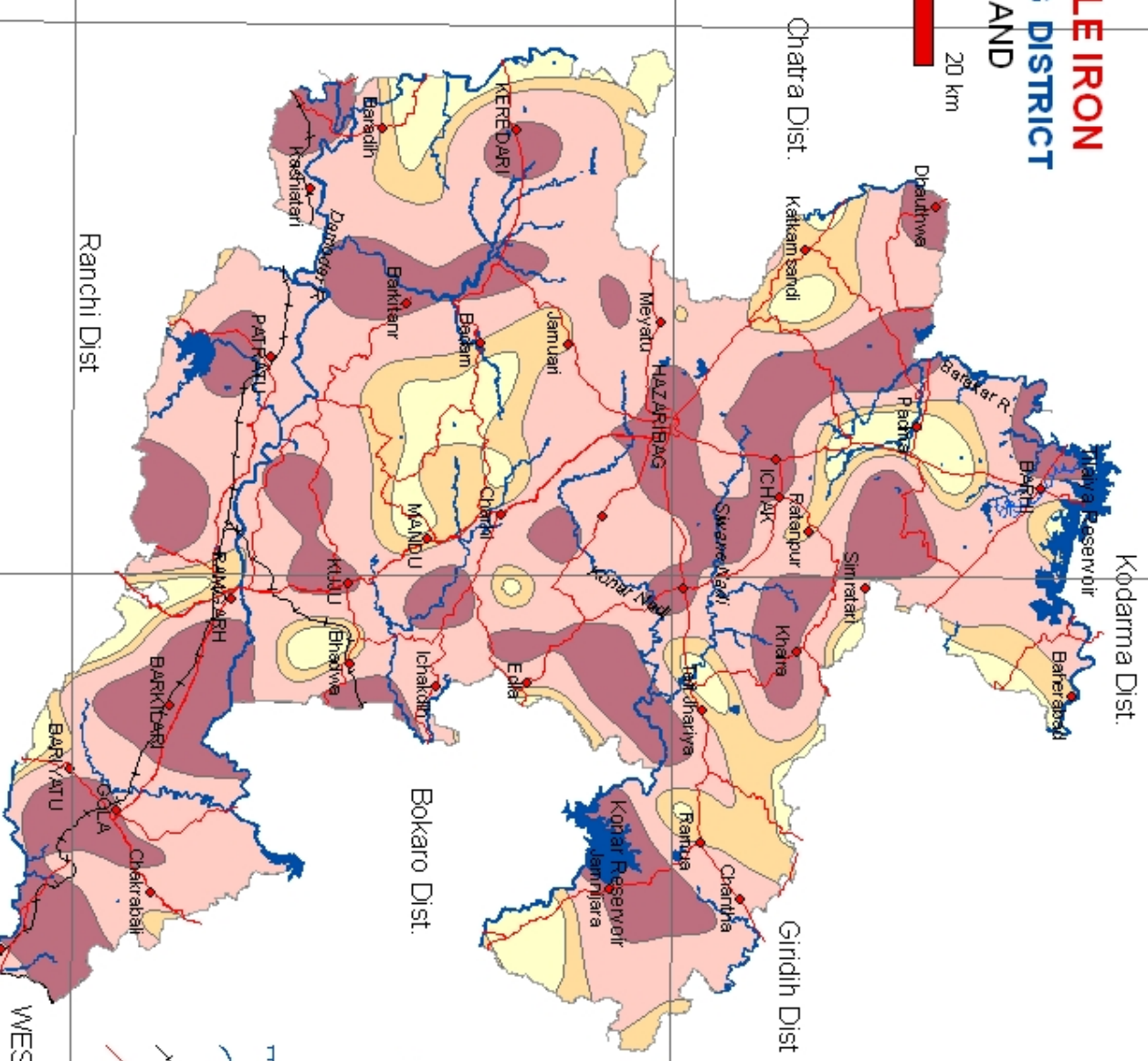
23°30'N

Fig. 8

85°00'E

85°30'E

86°00'E



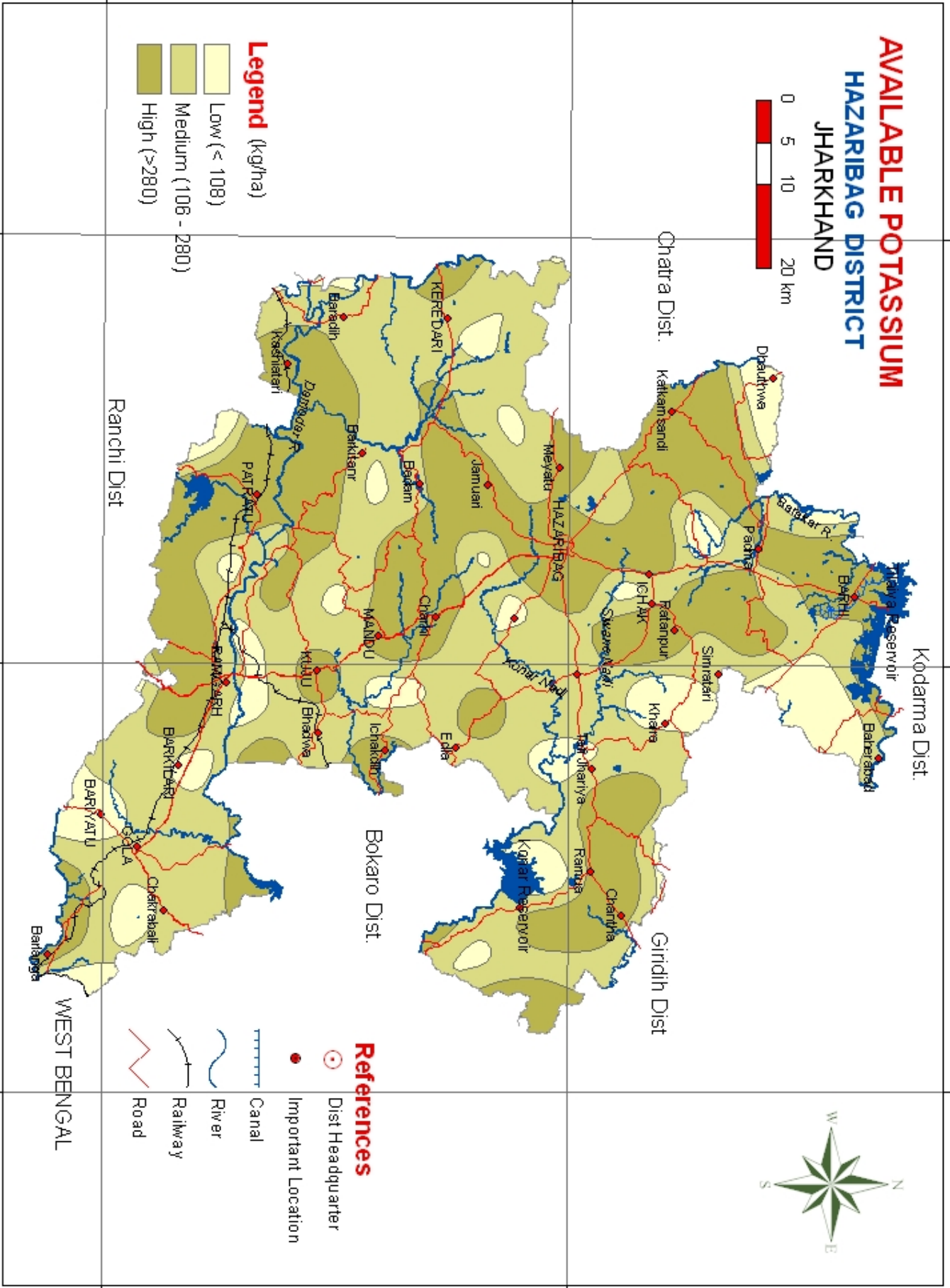
Legend (mg/kg)

- <15
- 15 - 25
- 25 - 50
- 50 - 100

- References**
- Dist Headquarter
 - Important Location
 - Canal
 - River
 - Railway
 - Road

Fig. 8

AVAILABLE POTASSIUM HAZARIBAG DISTRICT JHARKHAND

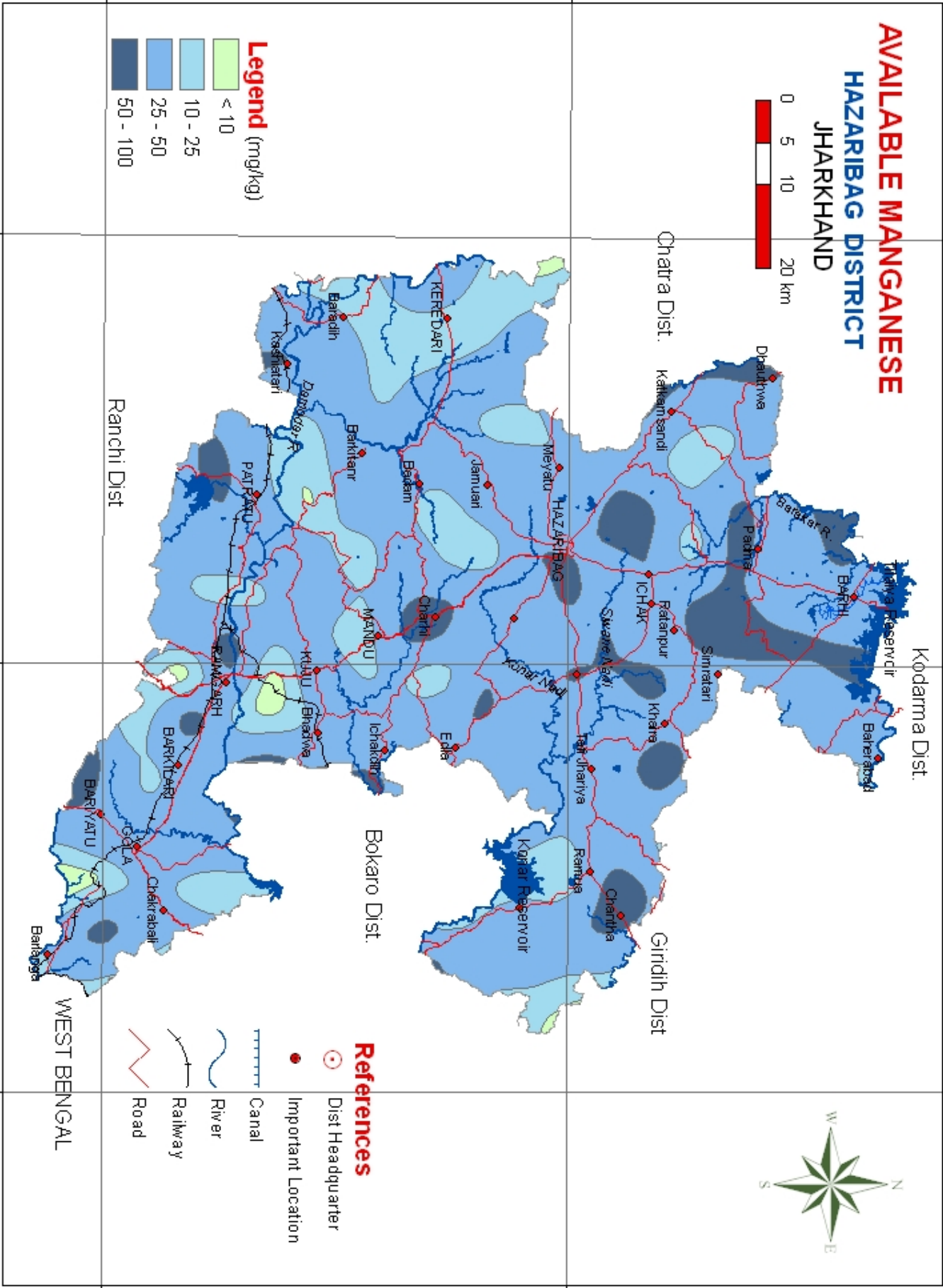
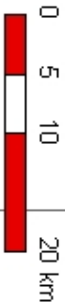


- Legend (kg/ha)**
- Low (< 108)
 - Medium (106 - 280)
 - High (> 280)

- References**
- Dist Headquarter
 - Important Location
 - Canal
 - River
 - Railway
 - Road

Fig. 6

AVAILABLE MANGANESE HAZARIBAG DISTRICT JHARKHAND

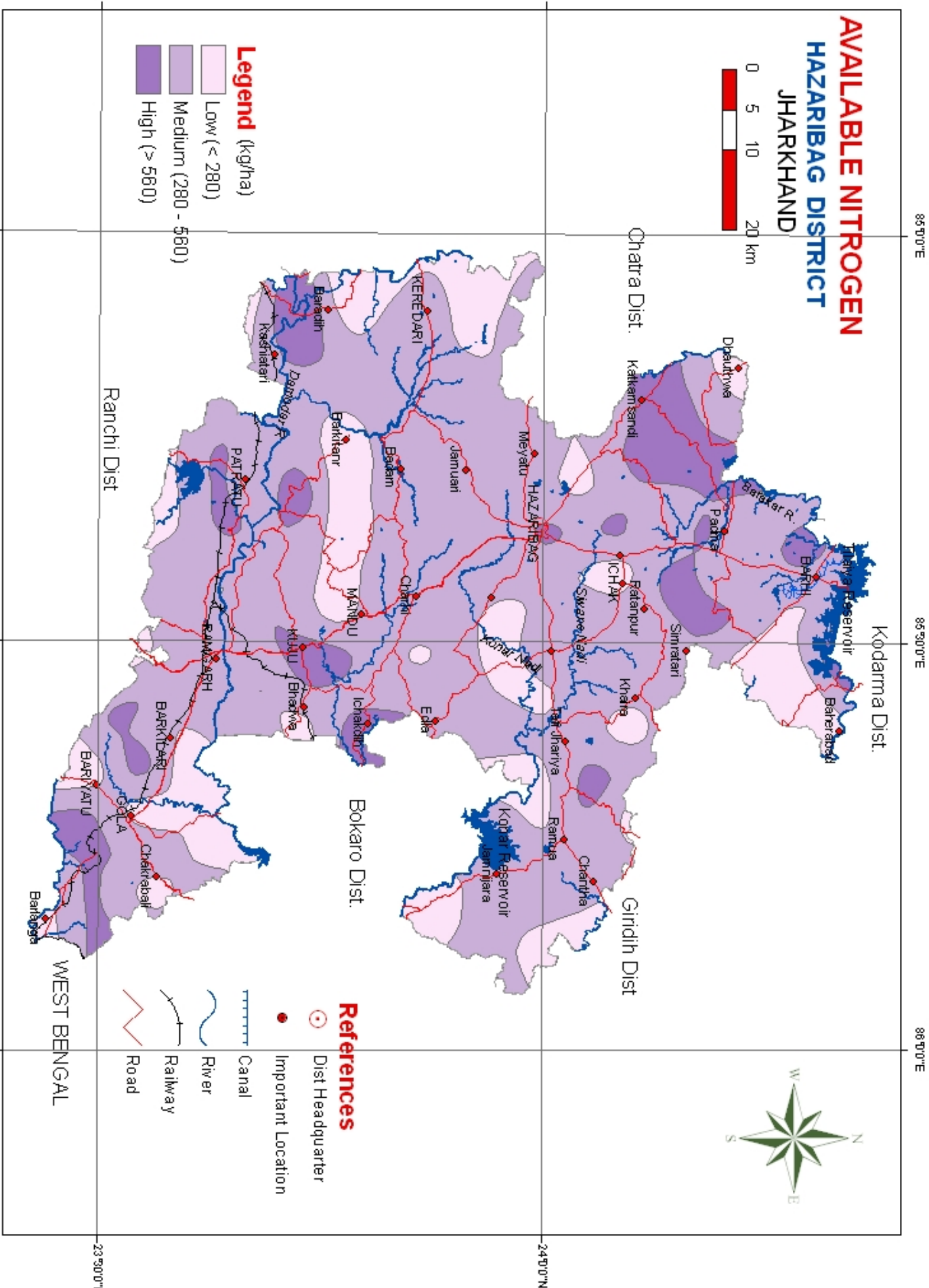
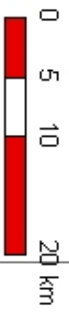


- Legend (mg/kg)**
- < 10
 - 10 - 25
 - 25 - 50
 - 50 - 100

- References**
- Dist Headquarter
 - Important Location
 - Canal
 - River
 - Railway
 - Road

Fig. 9

AVAILABLE NITROGEN HAZARIBAG DISTRICT JHARKHAND

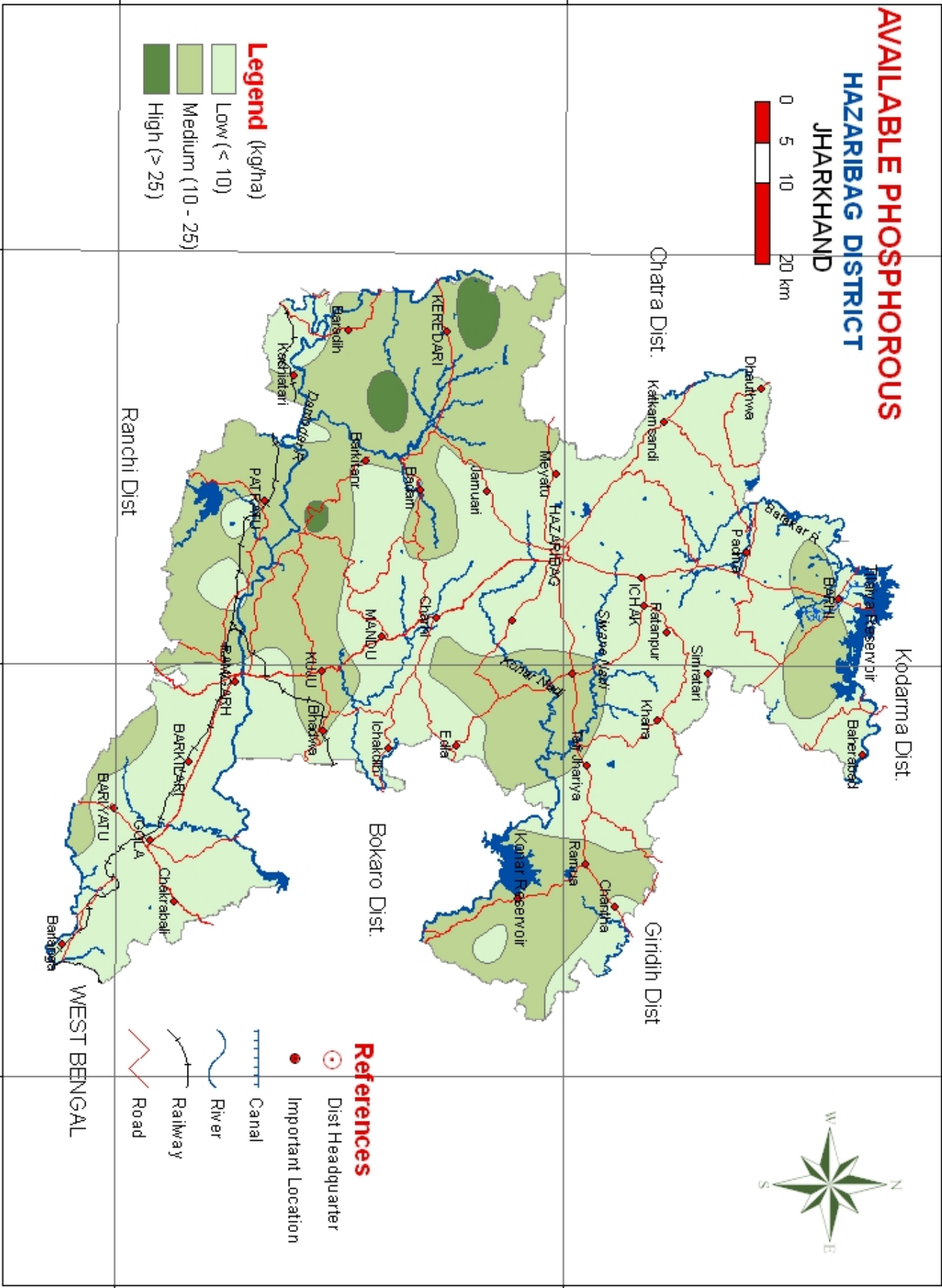
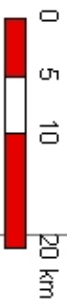


- Legend (kg/ha)**
- Low (< 280)
 - Medium (280 - 560)
 - High (> 560)

- References**
- Dist Headquarter
 - Important Location
 - Canal
 - River
 - Railway
 - Road

Fig. 4

AVAILABLE PHOSPHOROUS HAZARIBAG DISTRICT JHARKHAND

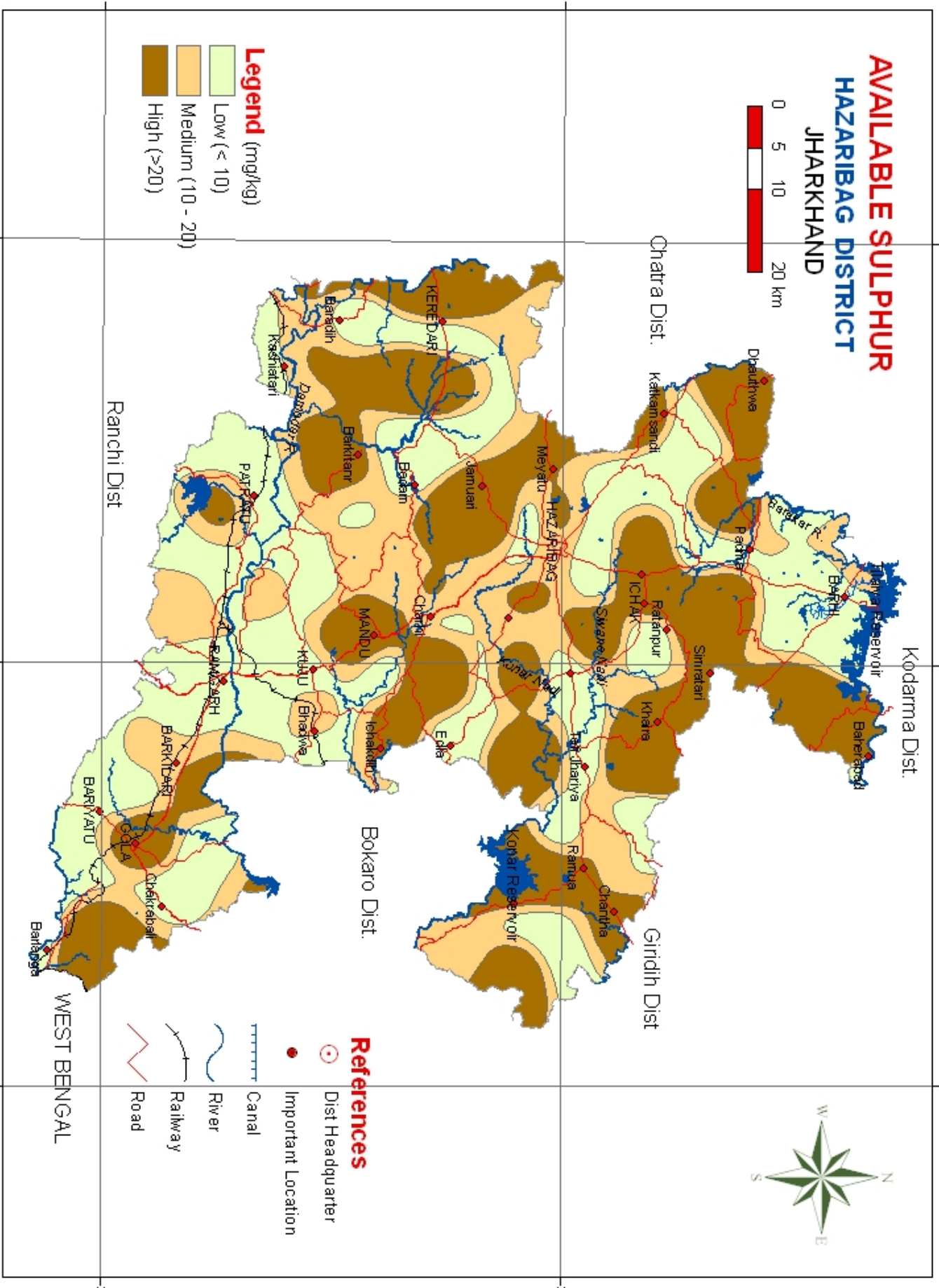
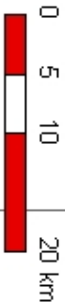


- Legend** (kg/ha)
- Low (< 10)
 - Medium (10 - 25)
 - High (> 25)

- References**
- Dist Headquarter
 - Important Location
 - Canal
 - River
 - Railway
 - Road

Fig. 5

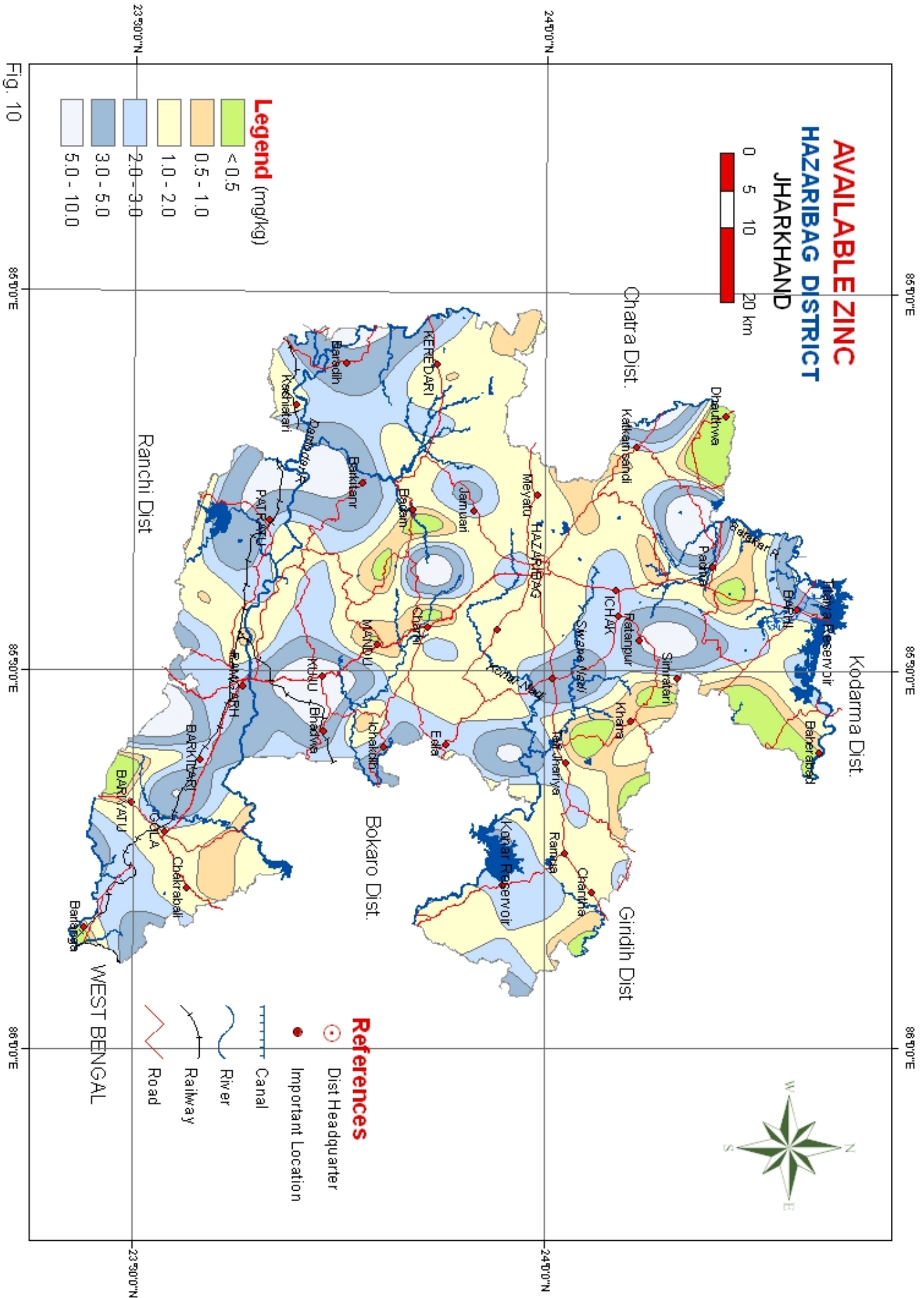
AVAILABLE SULPHUR HAZARIBAG DISTRICT JHARKHAND



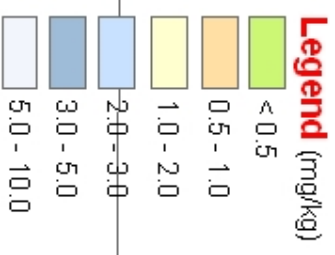
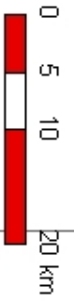
- Legend (mg/kg)**
- Low (< 10)
 - Medium (10 - 20)
 - High (>20)

- References**
- Dist Headquarter
 - Important Location
 - Canal
 - River
 - Railway
 - Road

Fig. 7



AVAILABLE ZINC
HAZARIBAG DISTRICT
JHARKHAND



- References**
- Dist Headquarter
 - Important Location

- Canal
- River
- Railway
- Road

Fig. 10

WEST BENGAL

ORGANIC CARBON HAZARIBAG DISTRICT JHARKHAND

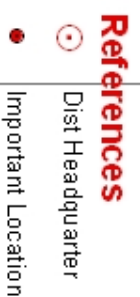
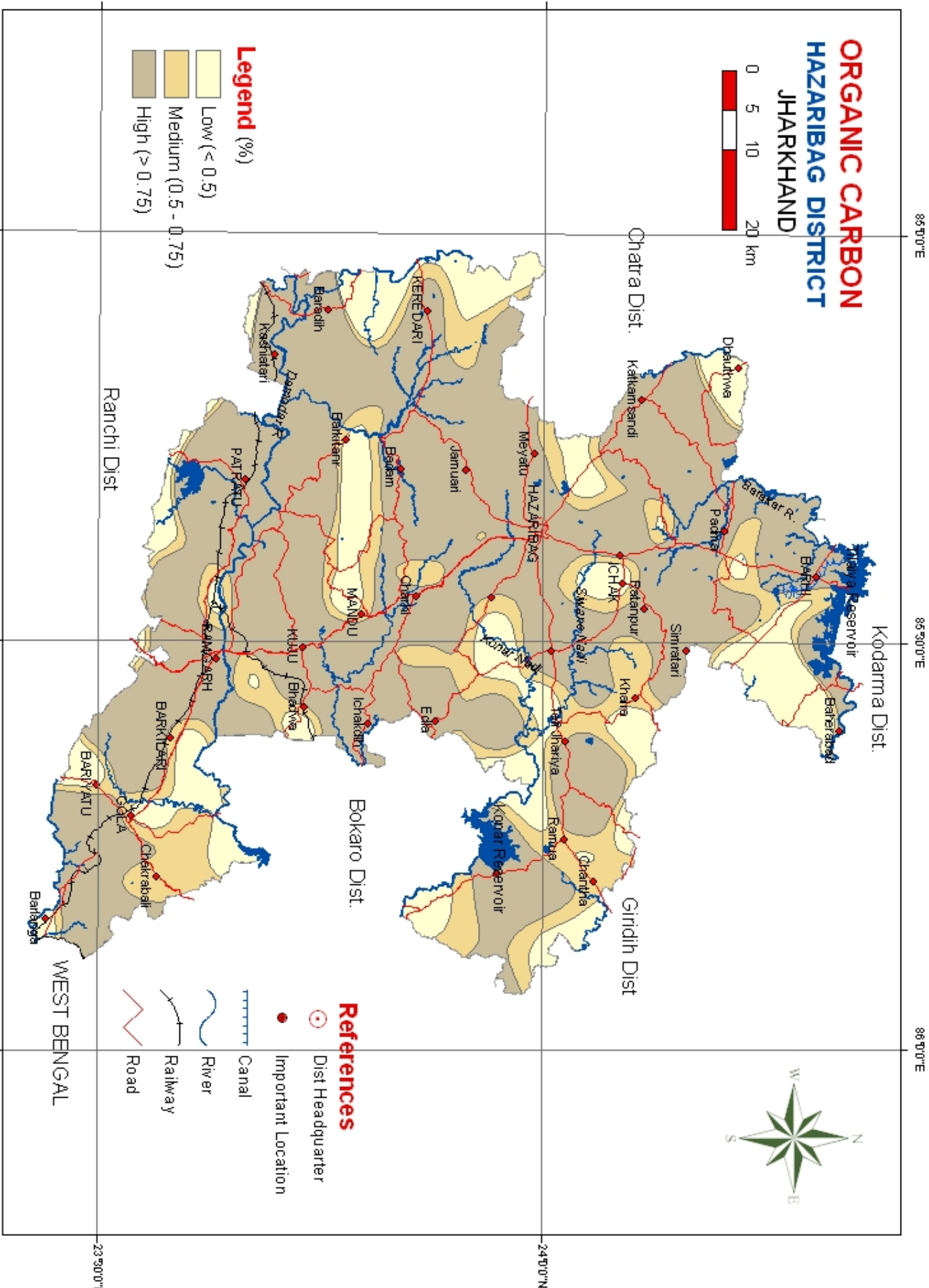


Fig. 3