

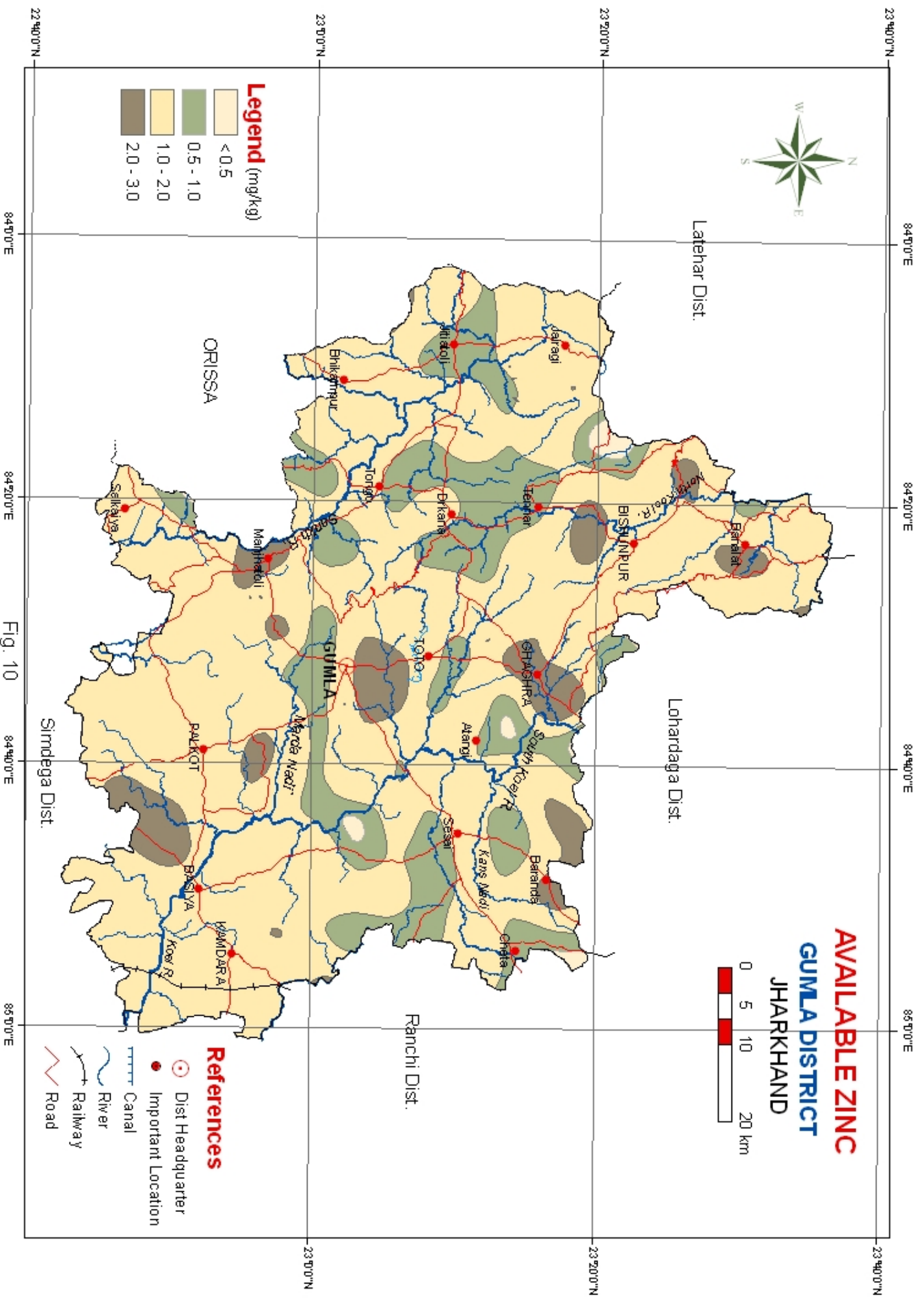
**AVAILABLE SULPHUR**  
**GUMLA DISTRICT**  
**JHARKHAND**



- Legend (mg/kg)**
- Low (< 10)
  - Medium (10 - 20)
  - High (> 20)

- References**
- Dist Headquarter
  - Important Location
  - Canal
  - River
  - Railway
  - Road

Fig. 7



**AVAILABLE ZINC**  
**GUMLA DISTRICT**  
**JHARKHAND**

0 5 10 20 km

**Legend (mg/kg)**

- <math>< 0.5</math>
- 0.5 - 1.0
- 1.0 - 2.0
- 2.0 - 3.0

**References**

- Dist Headquarter
- Important Location
- Canal
- River
- Railway
- Road

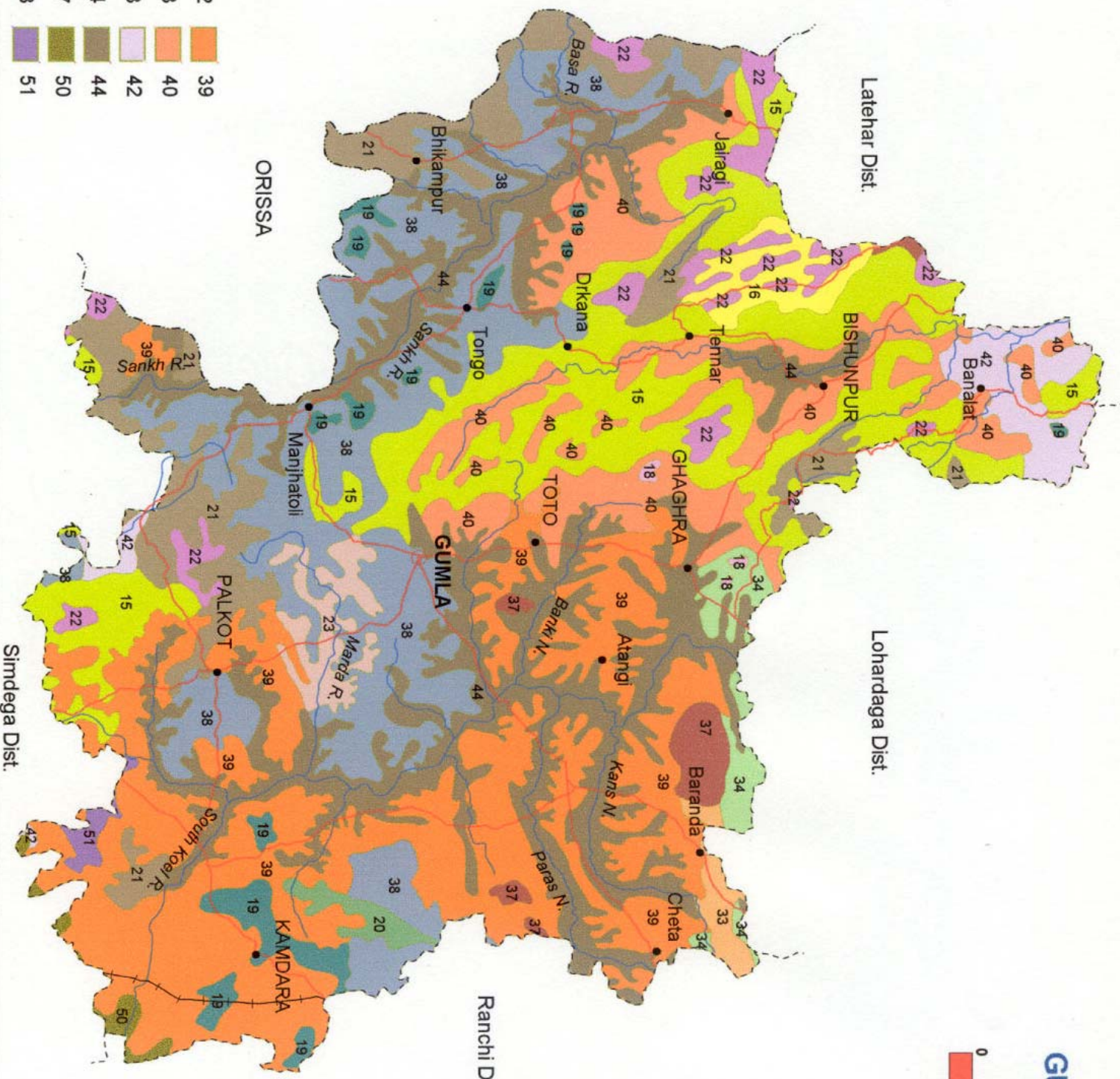
Fig. 10



# SOILS

## GUMLA DISTRICT

### JHARKHAND



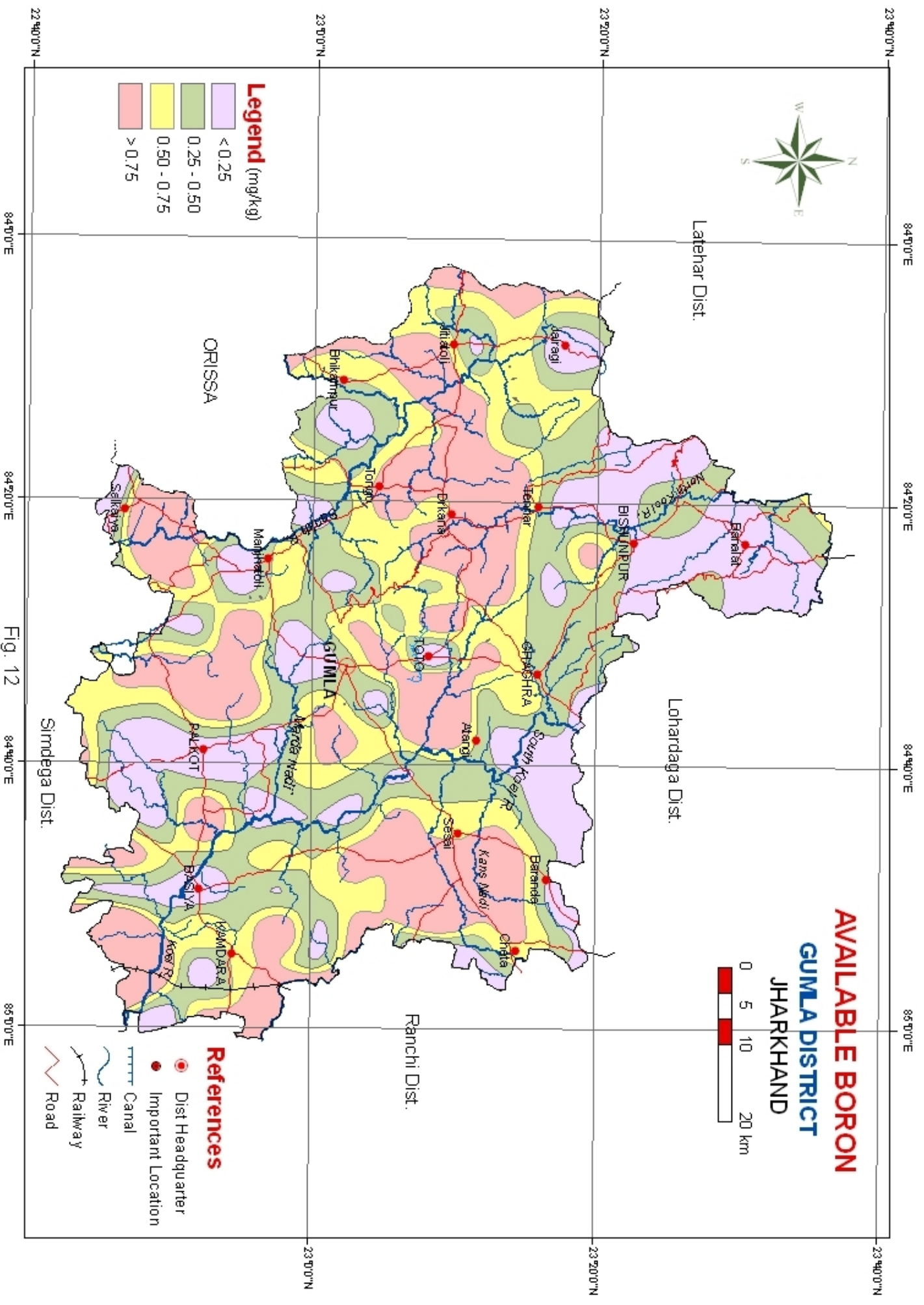
**LEGEND**

15	22	39
16	23	40
18	33	42
19	34	44
20	37	50
21	38	51

**REFERENCES**

	Dist Headquarter
	Important Location
	Railway
	River
	Road

Fig. - 1



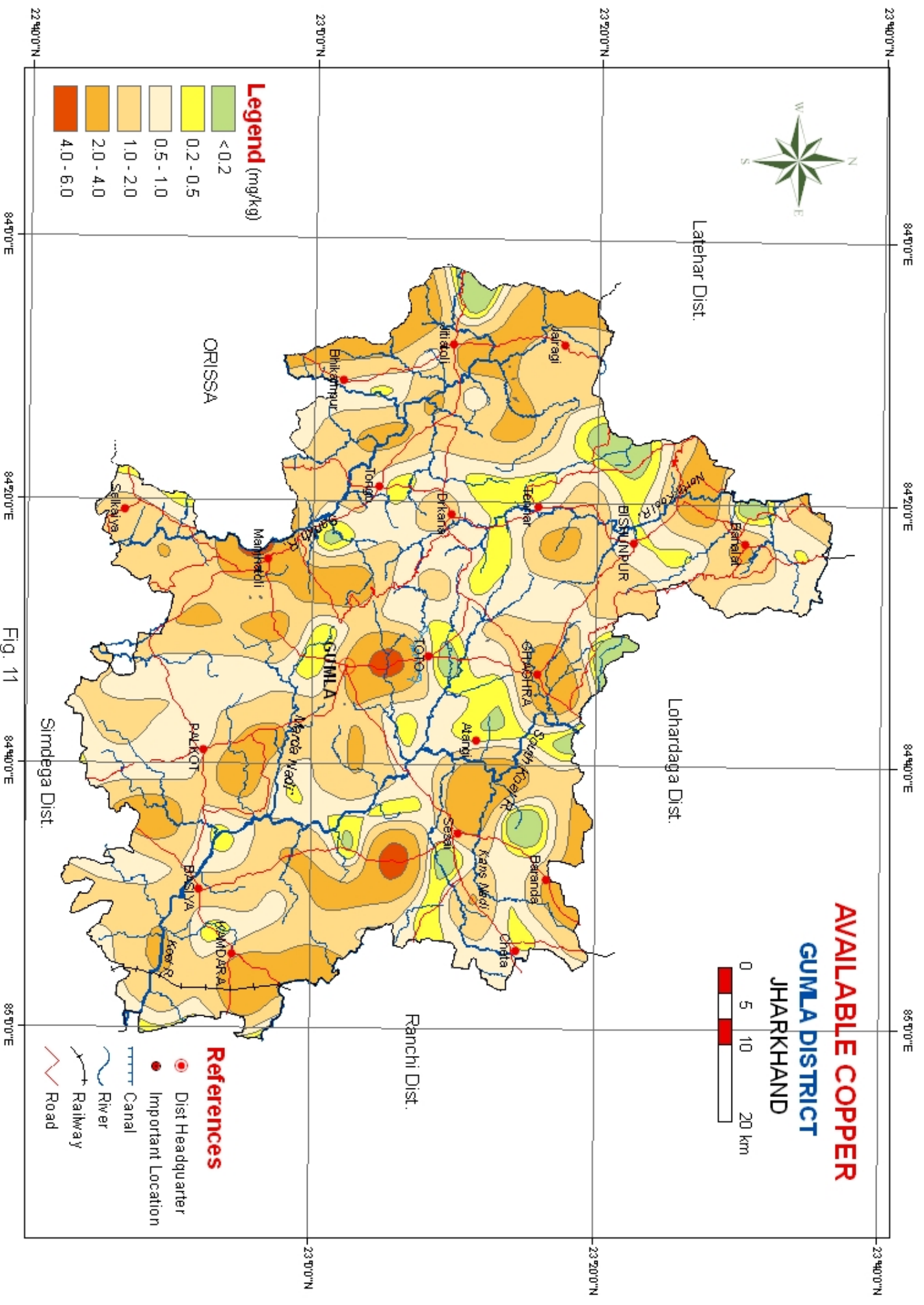
**AVAILABLE BORON**  
**GUMLA DISTRICT**  
**JHARKHAND**



- Legend (mg/kg)**
- <math>< 0.25</math>
  - <math>0.25 - 0.50</math>
  - <math>0.50 - 0.75</math>
  - <math>> 0.75</math>

- References**
- Dist Headquarter
  - Important Location
  - ▬ Canal
  - ▬ River
  - ▬ Railway
  - ▬ Road

Fig. 12



**AVAILABLE COPPER**  
**GUMLA DISTRICT**  
**JHARKHAND**

**Legend (mg/kg)**

- <math>< 0.2</math>
- 0.2 - 0.5
- 0.5 - 1.0
- 1.0 - 2.0
- 2.0 - 4.0
- 4.0 - 6.0

**References**

- Dist Headquarter
- Important Location
- Canal
- River
- Railway
- Road

84°0'0"E

84°20'0"E

Fig. 11

84°40'0"E

85°0'0"E

84°0'0"E

84°20'0"E

84°40'0"E

85°0'0"E

23°40'0"N

23°20'0"N

23°20'0"N

23°40'0"N

23°0'0"N

23°20'0"N

23°40'0"N

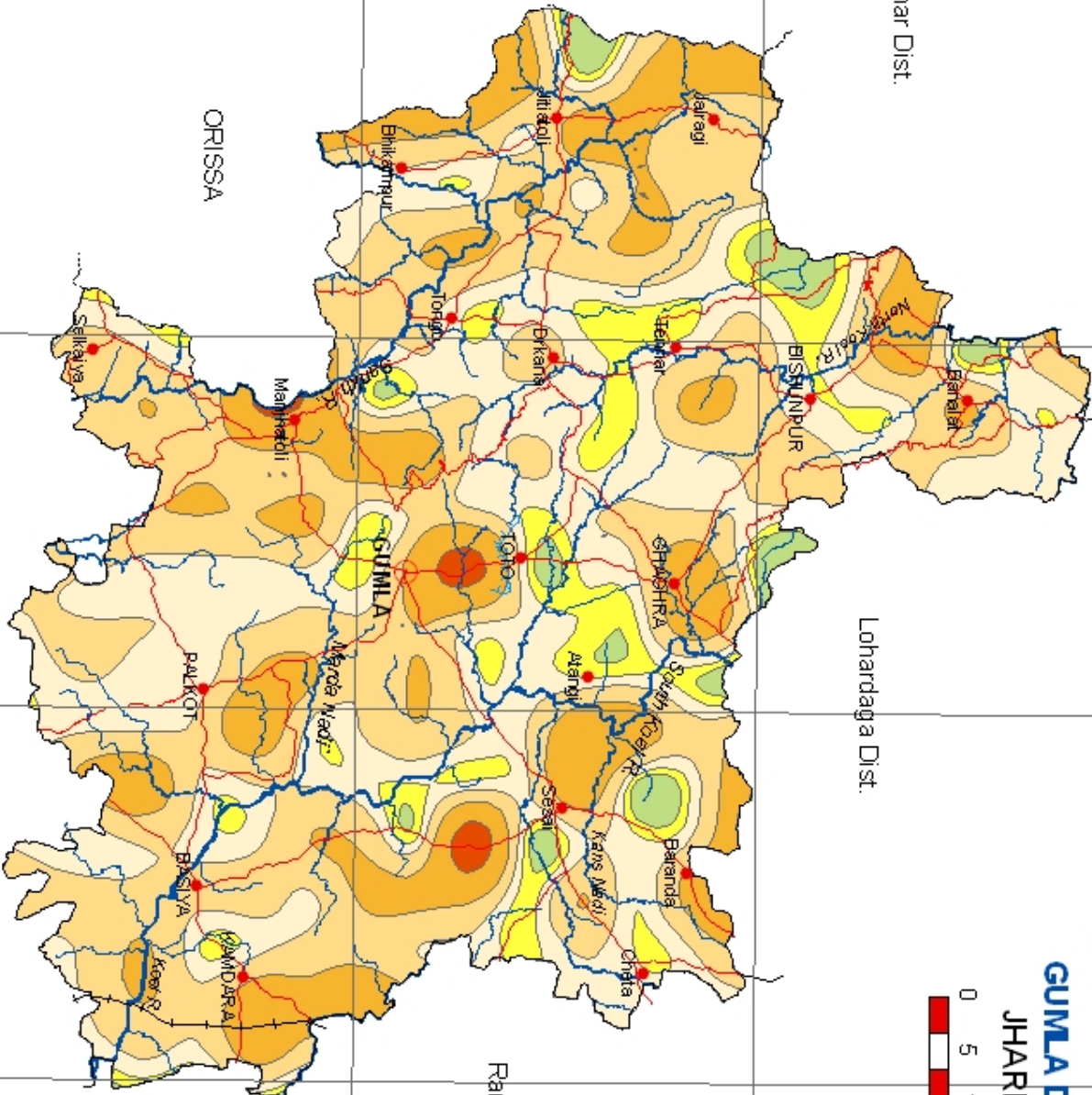
Latehar Dist.

Lohardaga Dist.

Ranchi Dist.

ORISSA

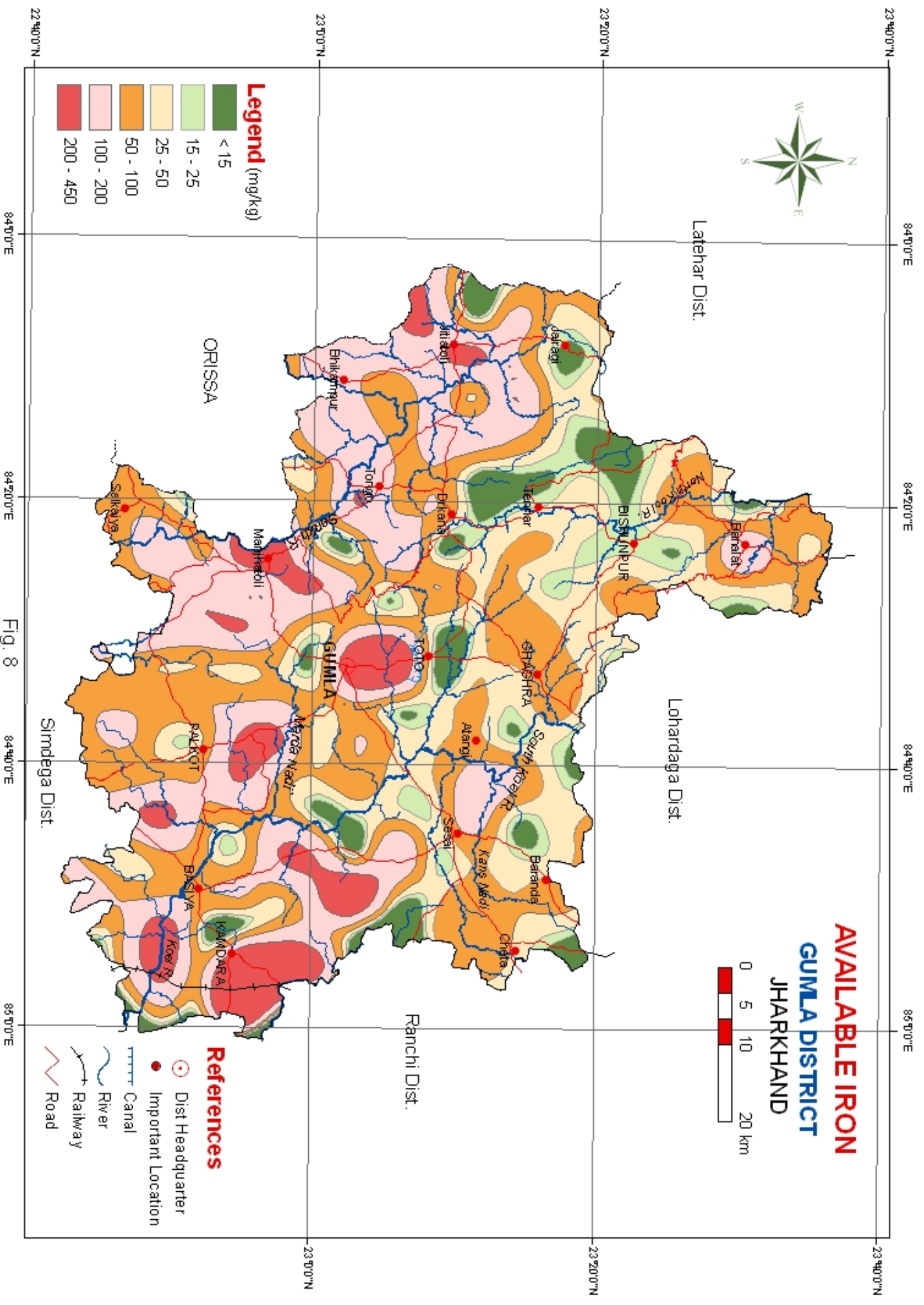
Simdega Dist.

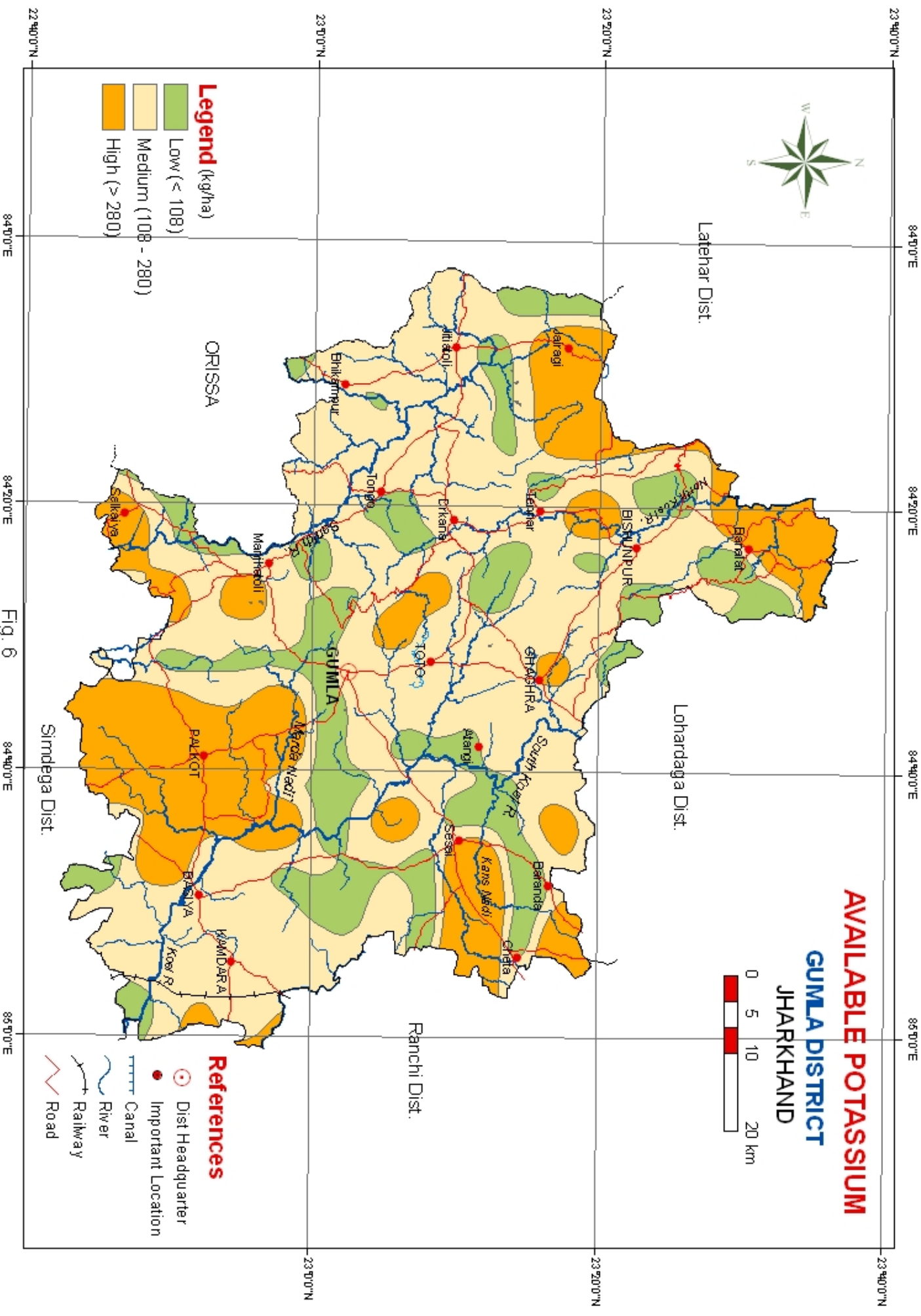


ORISSA

Simdega Dist.

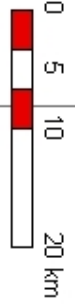
Ranchi Dist.





**AVAILABLE POTASSIUM**

**GUMLA DISTRICT  
JHARKHAND**



- Legend (kg/ha)**
- Low (< 108)
  - Medium (108 - 280)
  - High (> 280)

- References**
- Dist Headquarter
  - Important Location
  - Canal
  - River
  - Railway
  - Road

Fig. 6

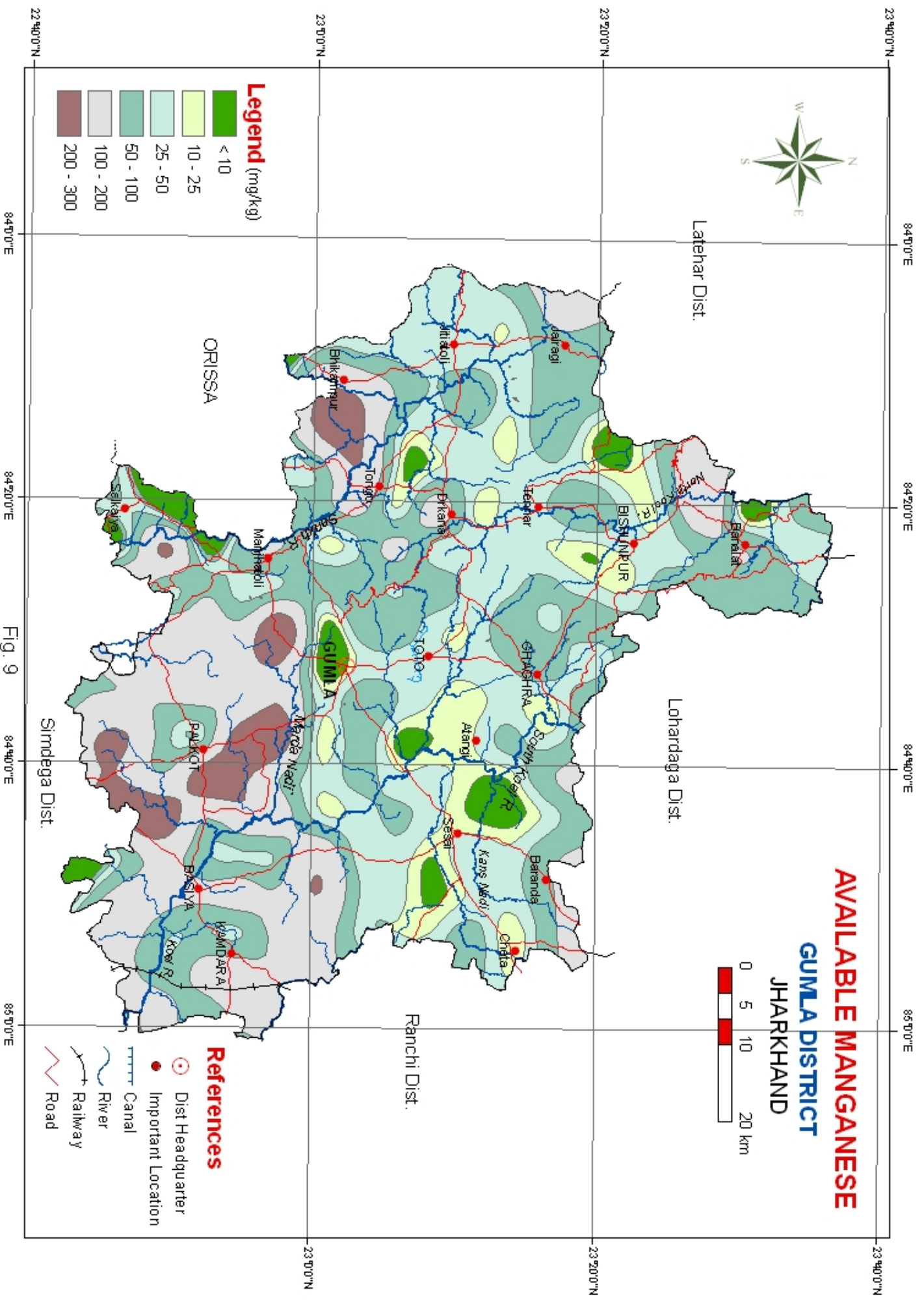
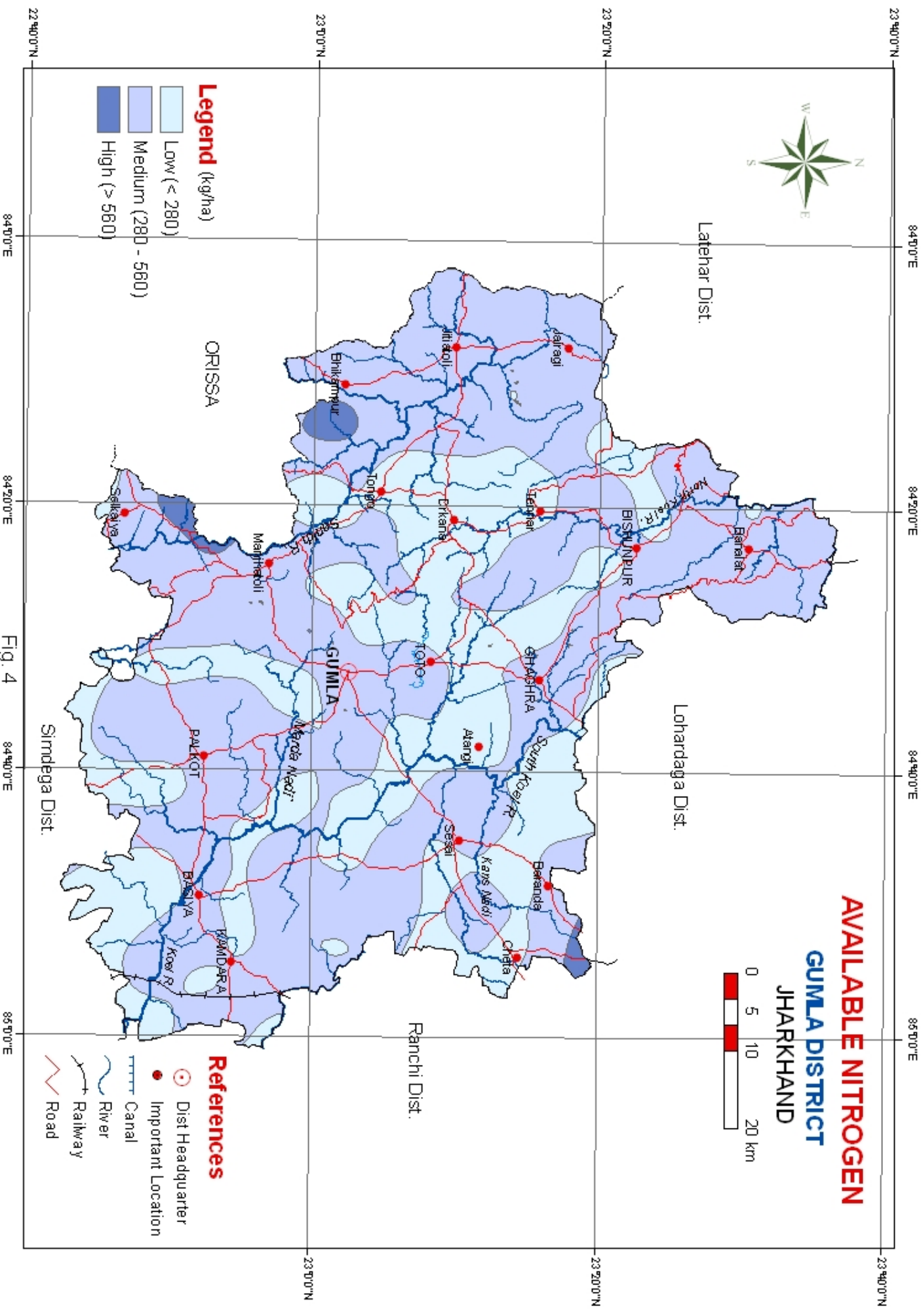


FIG. 9





**AVAILABLE NITROGEN**

**GUMLA DISTRICT  
JHARKHAND**



- Legend (kg/ha)**
- Low (< 280)
  - Medium (280 - 560)
  - High (> 560)

- References**
- Dist Headquarter
  - Important Location
  - Canal
  - River
  - Railway
  - Road

Fig. 4

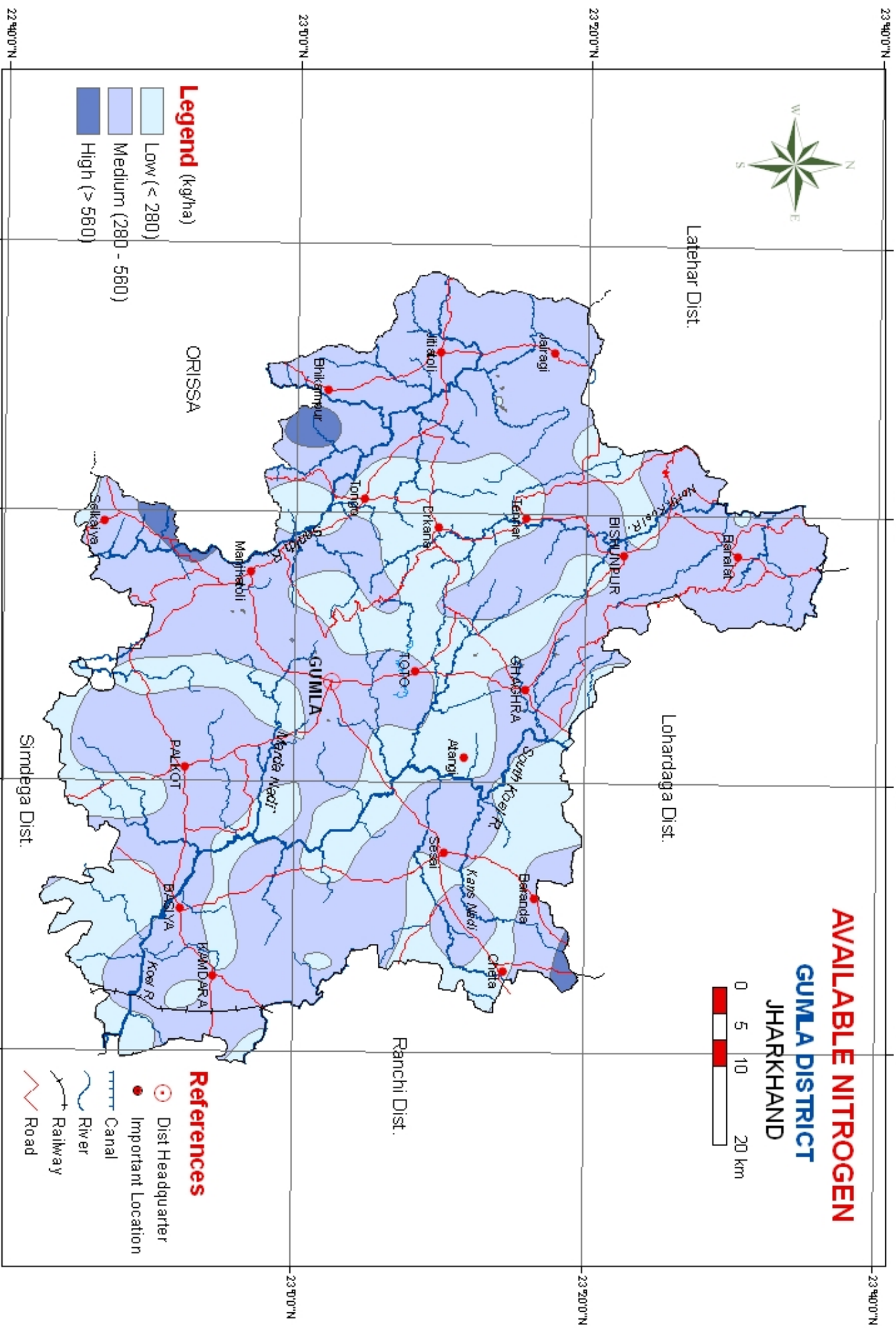
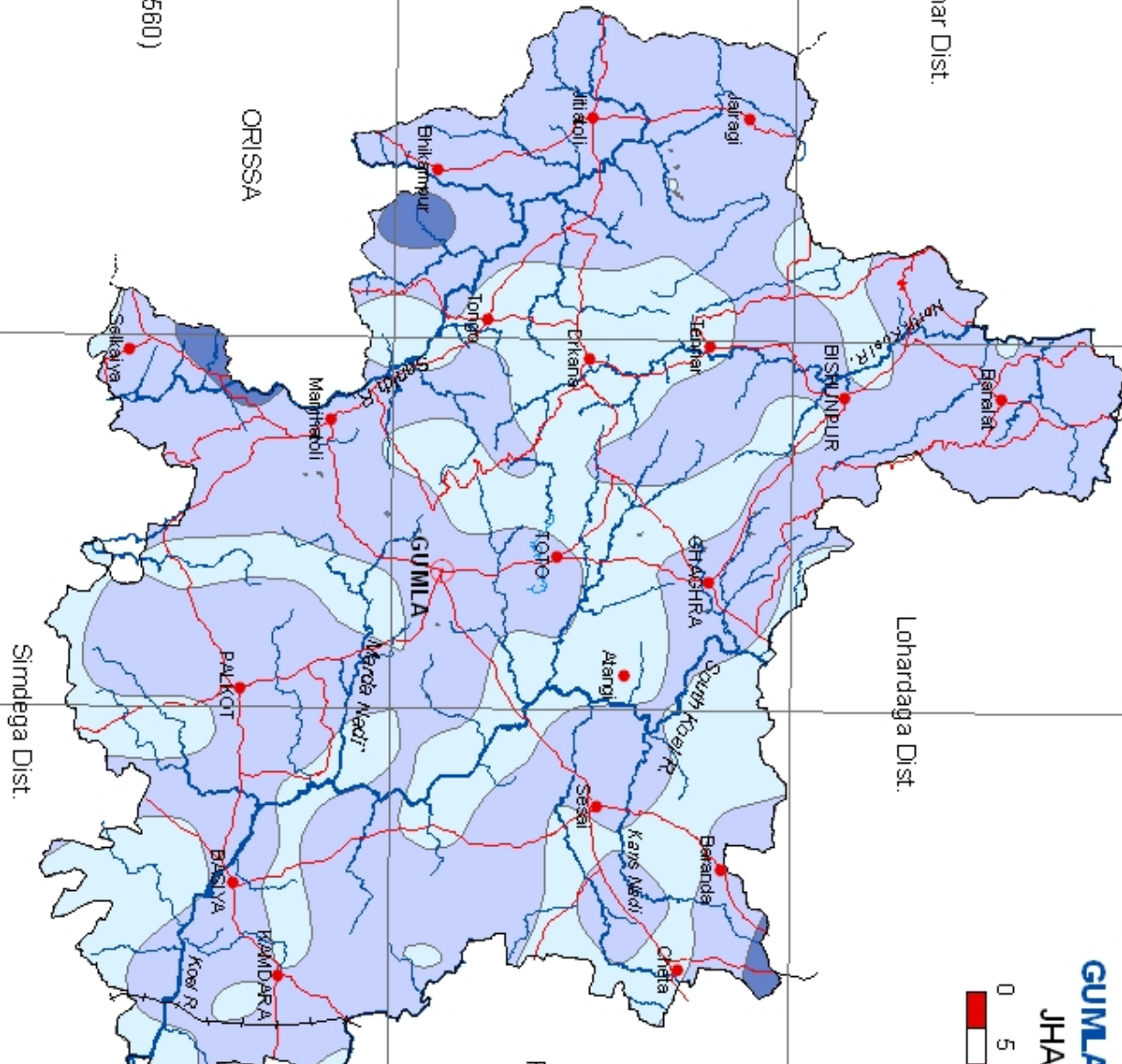
ORISSA

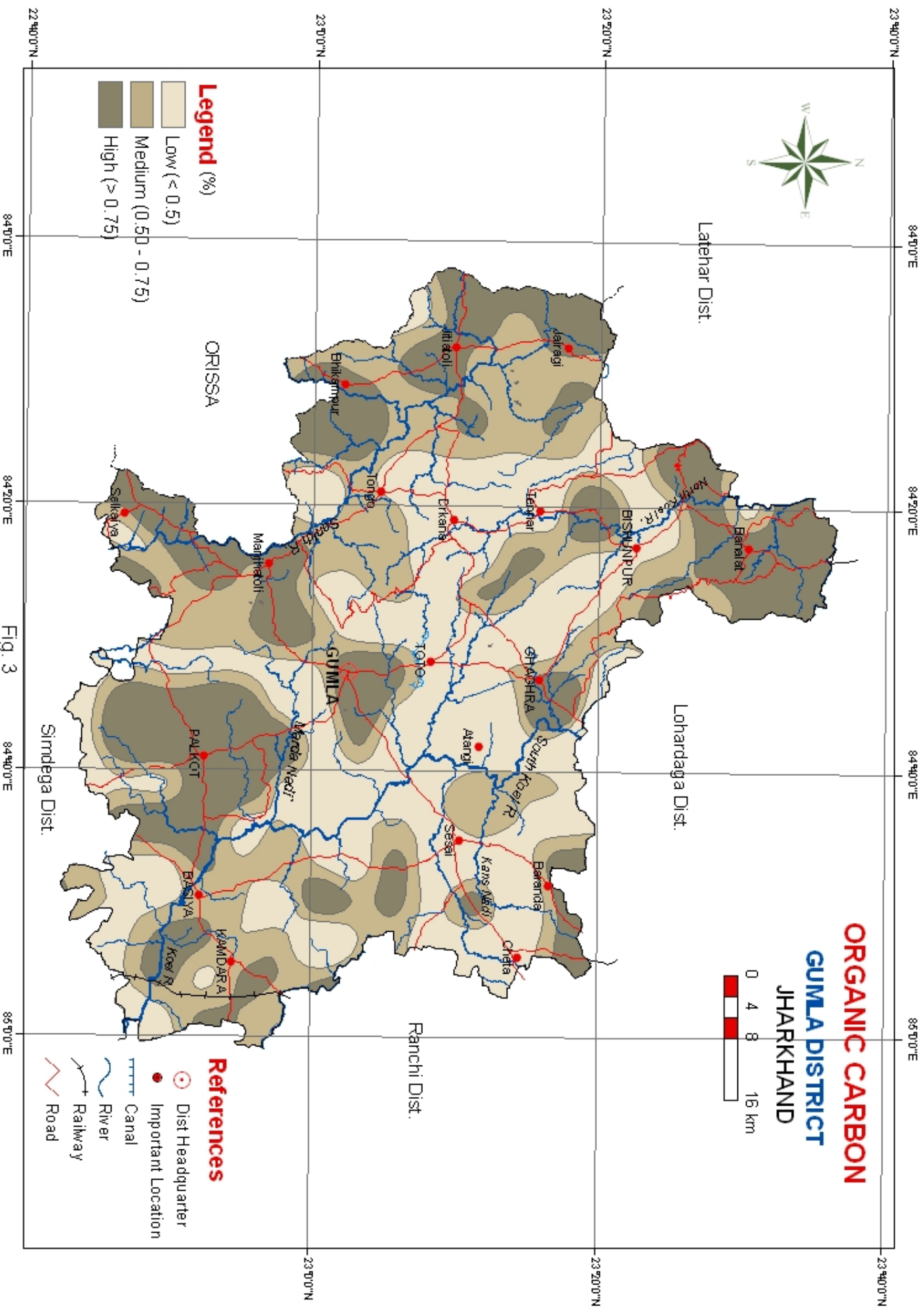
Simdega Dist.

Latehar Dist.

Lohardaga Dist.

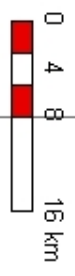
Ranchi Dist.





**ORGANIC CARBON**

**GUMLA DISTRICT  
JHARKHAND**

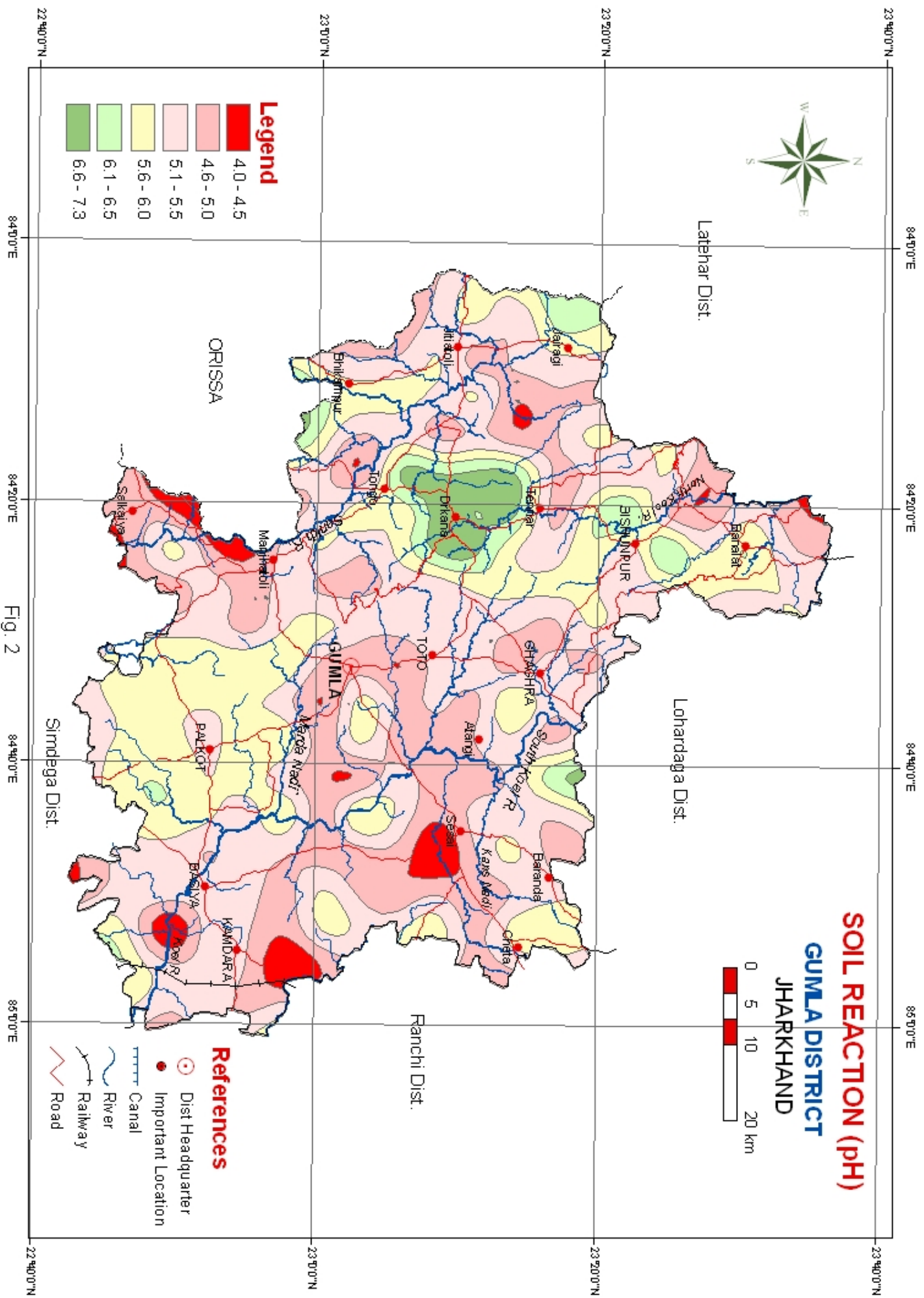


- Legend (%)**
- Low (<math>< 0.5\</math>)
  - Medium (0.50 - 0.75)
  - High (> 0.75)

- References**
- Dist Headquarter
  - Important Location
  - Canal
  - River
  - Railway
  - Road

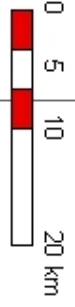
Fig. 3





# SOIL REACTION (pH)

## GUMLA DISTRICT JHARKHAND



**Legend**

4.0 - 4.5
4.6 - 5.0
5.1 - 5.5
5.6 - 6.0
6.1 - 6.5
6.6 - 7.3

**References**

	Dist Headquarter
	Important Location
	Canal
	River
	Railway
	Road

Fig. 2