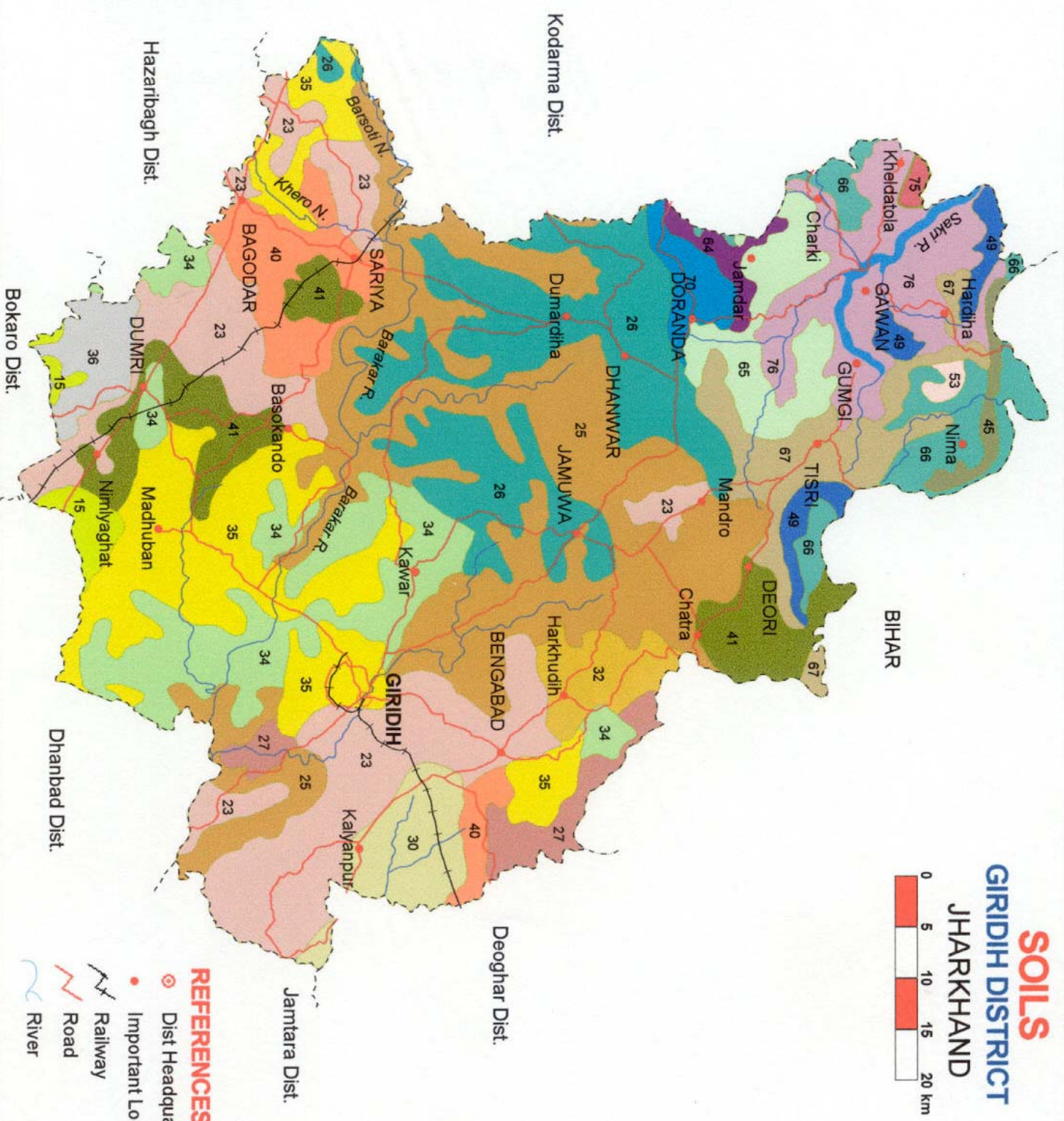
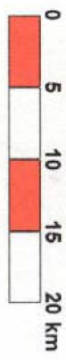




SOILS

GIRIDIH DISTRICT JHARKHAND



LEGEND

15	34	64
23	35	65
25	36	66
26	40	67
27	41	70
30	45	75
32	49	76
	53	

- REFERENCES**
- ⊙ Dist Headquarter
 - Important Location
 - ⚡ Railway
 - ⌂ Road
 - ~ River

Fig. - 1

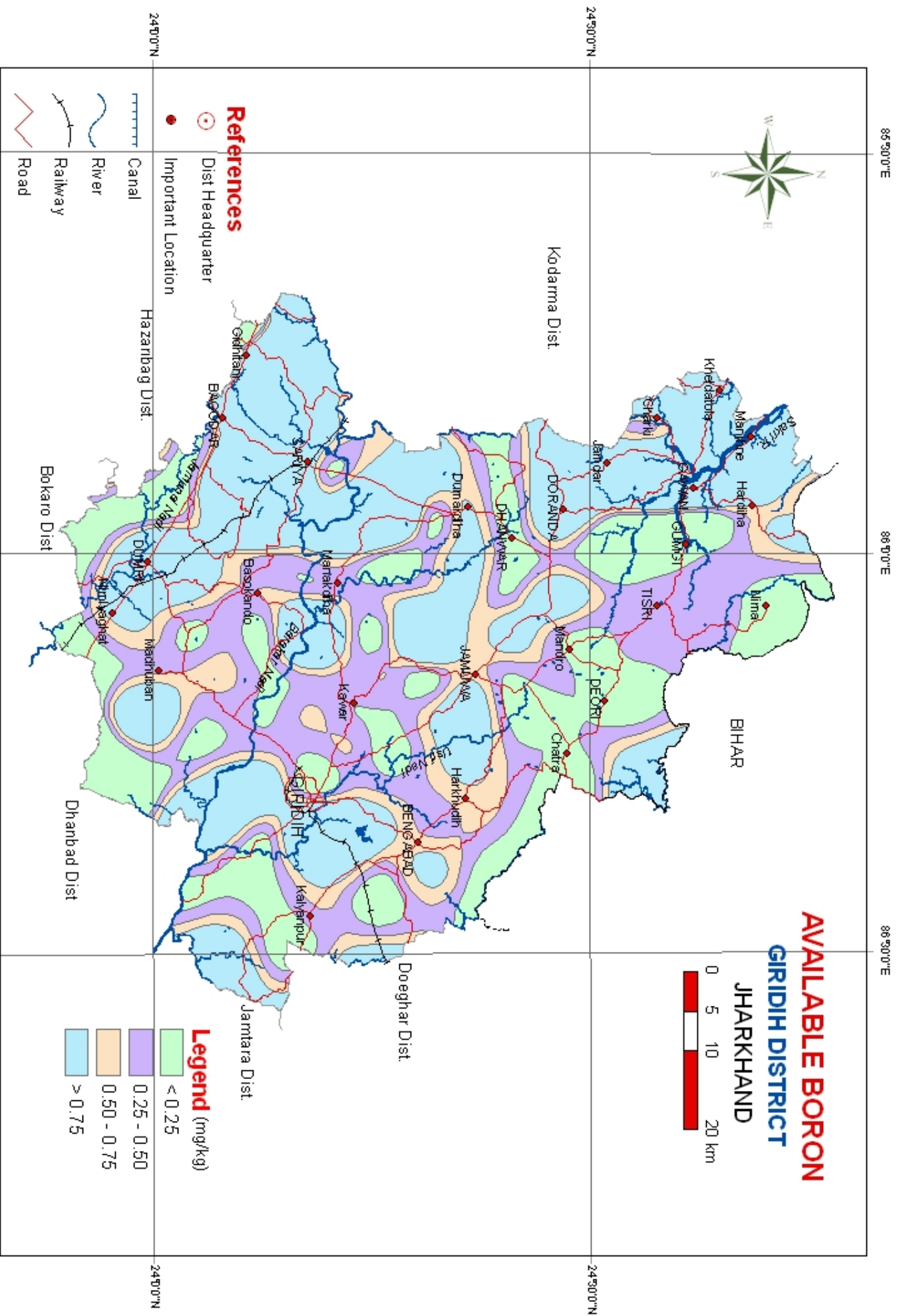


Fig. 12

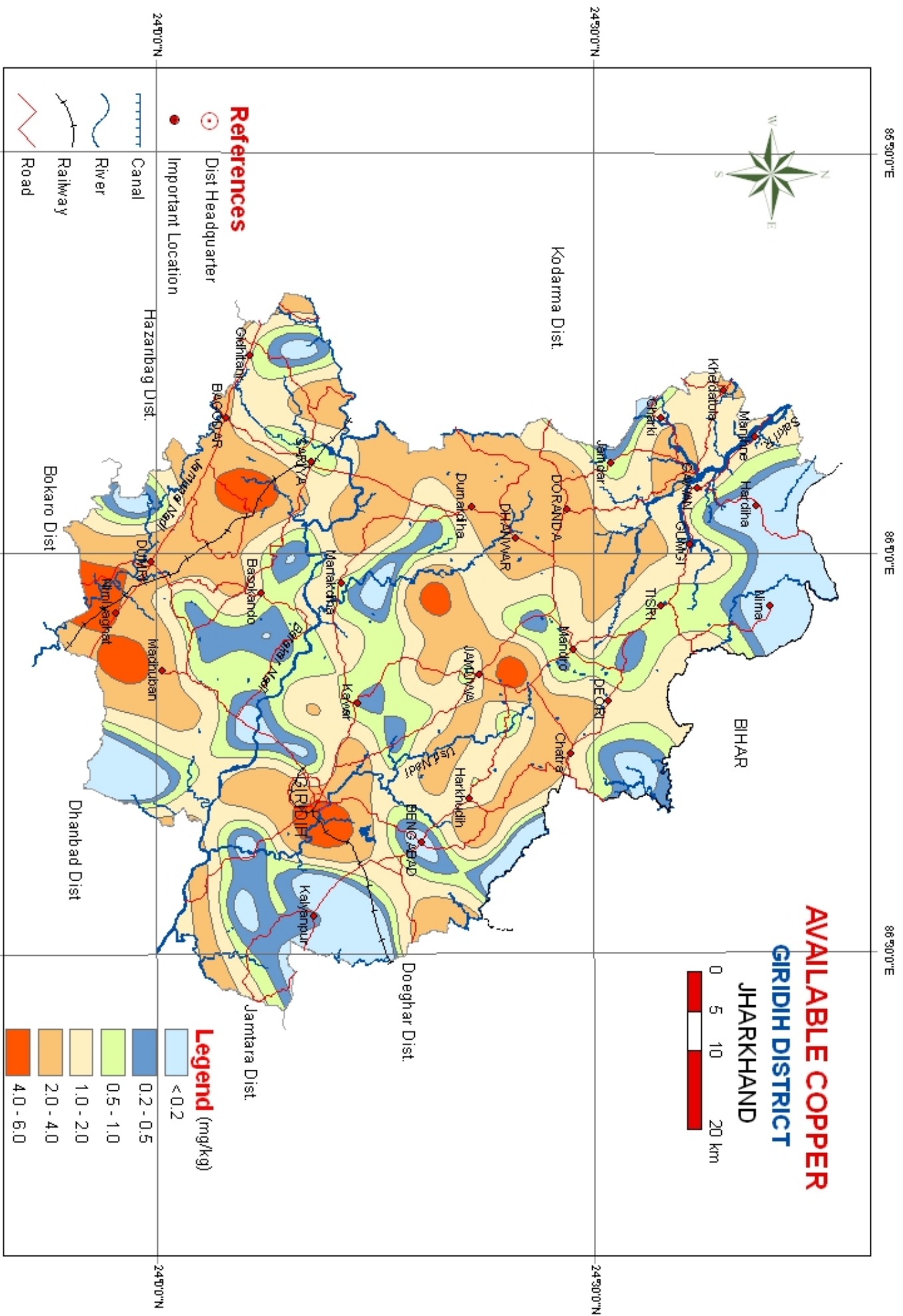


Fig. 11

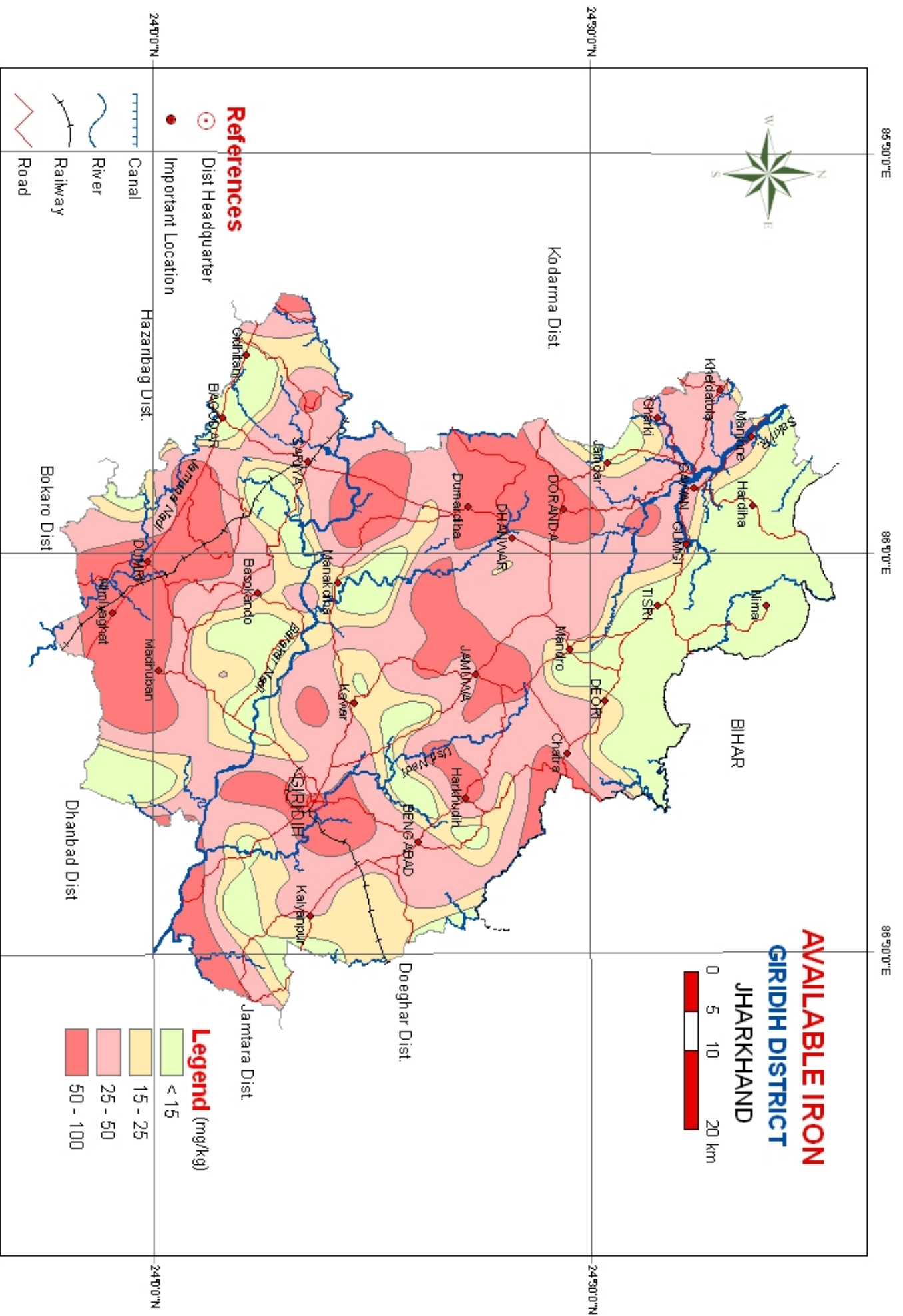


Fig. 8

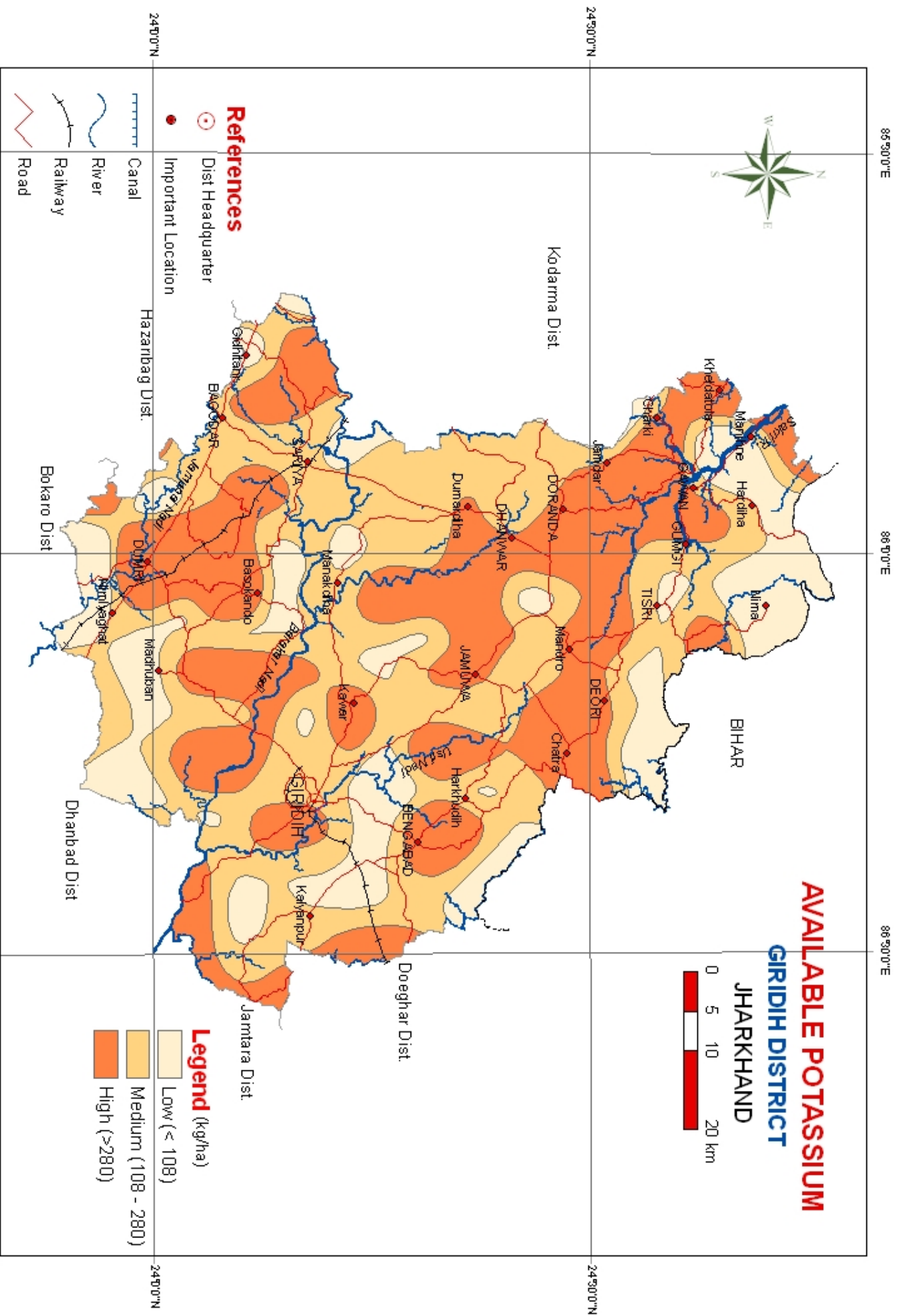


Fig 6

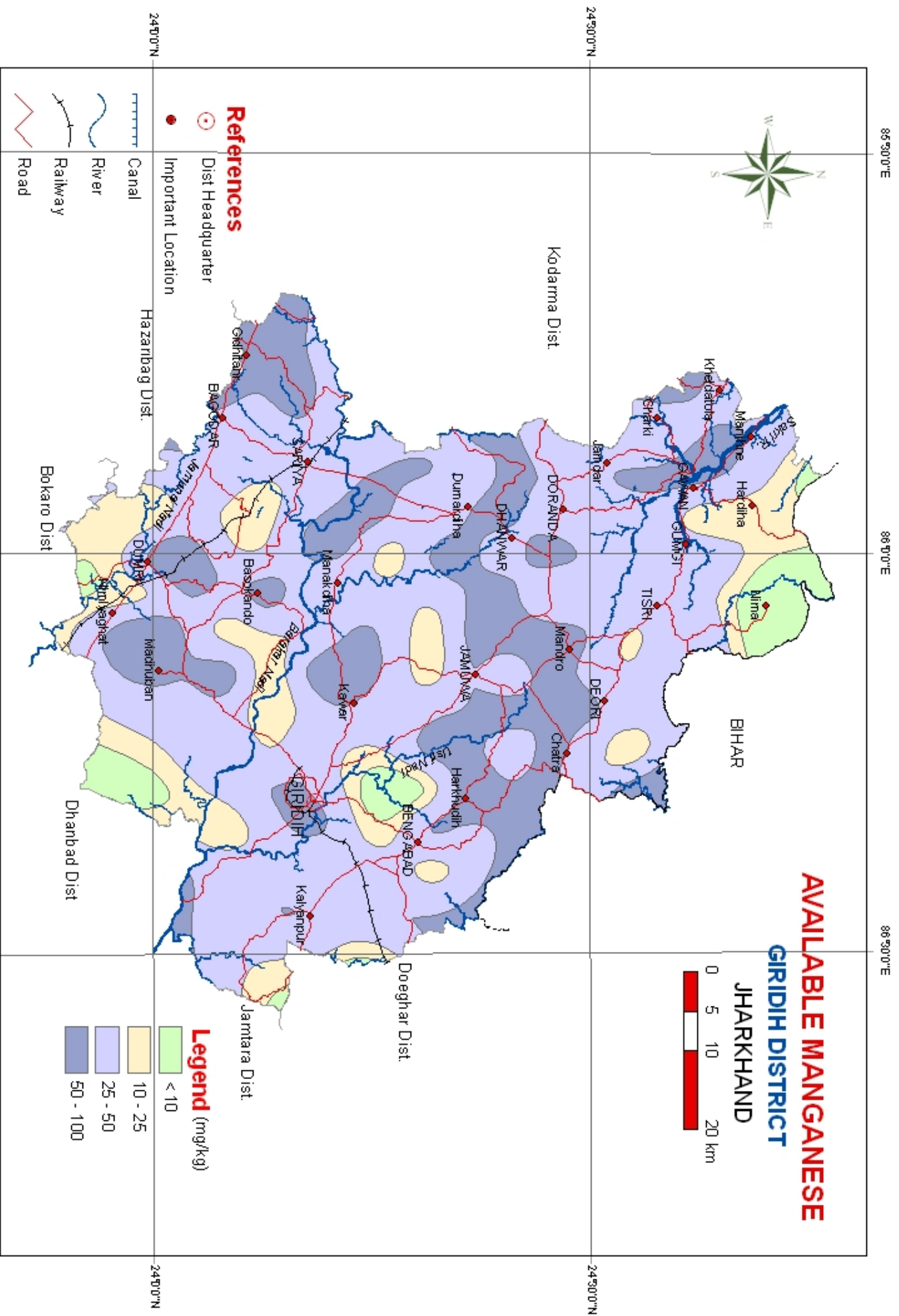


Fig. 9

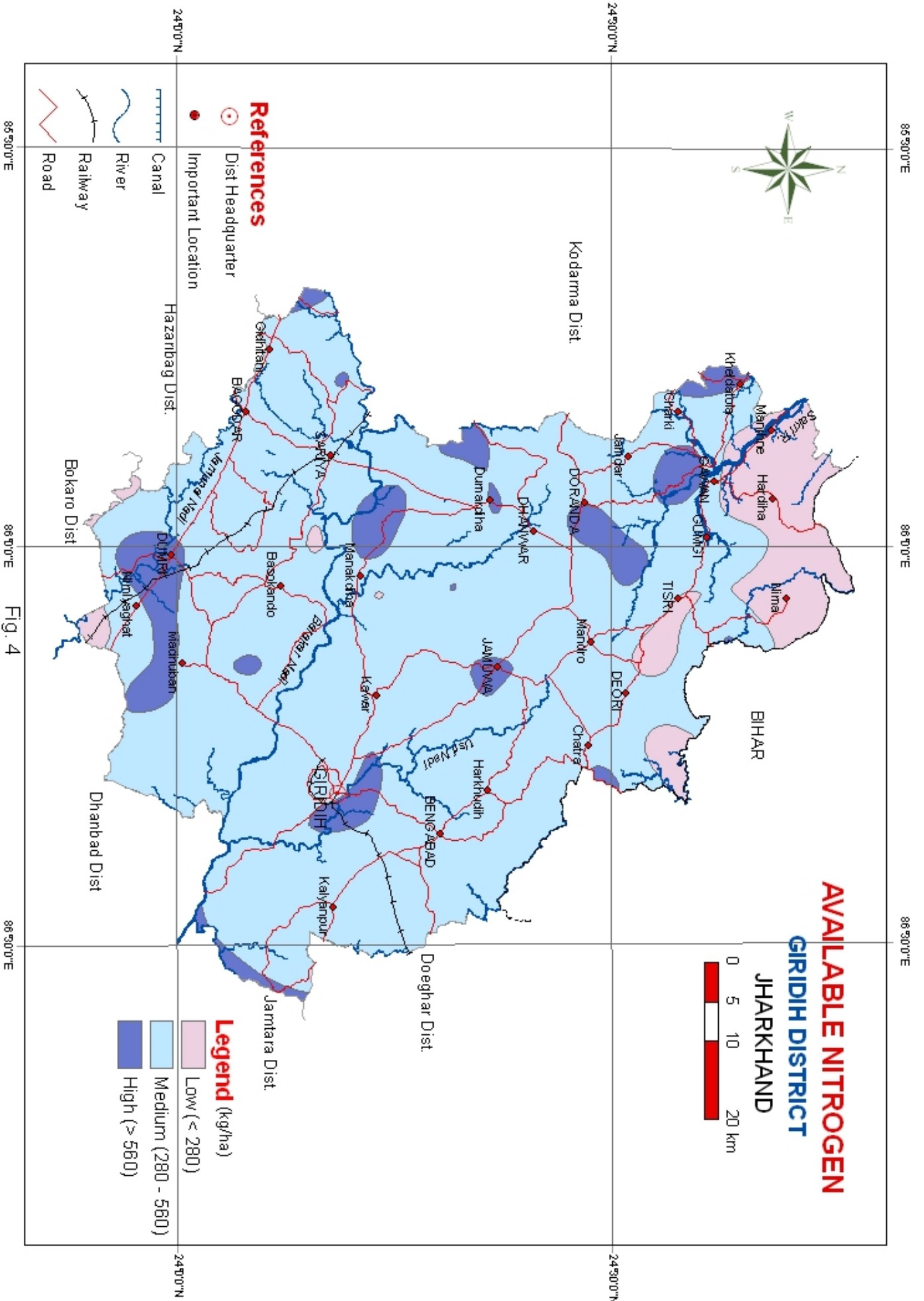


Fig. 4

85°30'0"E

86°0'0"E

86°30'0"E

24°30'0"N

24°30'0"N

24°0'0"N

24°0'0"N

85°30'0"E

86°0'0"E

86°30'0"E

AVAILABLE NITROGEN

GIRIDIH DISTRICT JHARKHAND



References

- Dist Headquarter
- Important Location

- Canal
- River
- Railway
- Road

Legend (kg/ha)

- Low (< 280)
- Medium (280 - 560)
- High (> 560)

Kodarma Dist.

BIHAR

Doga Dist.

Jamtara Dist.

Hazaribag Dist.

Bokaro Dist.

Dhanbad Dist.

Gokhran

Baingoer

Supt/A

Kanaiyapal Nadi

Durgam

Muniyachhet

Machindran

Basoigando

Bakotei Nadi

Karwar

Manakdig

Uski Nadi

Harhkhodin

Kalyanpur

BENIGABAD

JAMSHEDPUR

Chattr

DEORI

DEORIA

DEORIA

DEORIA

DEORIA

DEORIA

DEORIA

DEORIA

DEORIA

DEORIA

DEORIA

DEORIA

DEORIA

DEORIA

DEORIA

DEORIA

DEORIA

DEORIA

DEORIA

DEORIA

DEORIA

DEORIA

DEORIA

DEORIA

DEORIA

DEORIA

DEORIA

DEORIA

DEORIA

DEORIA

DEORIA

DEORIA

DEORIA

DEORIA

DEORIA

DEORIA

DEORIA

DEORIA

DEORIA

DEORIA

DEORIA

DEORIA

DEORIA

DEORIA

DEORIA

DEORIA

DEORIA

DEORIA

DEORIA

DEORIA

DEORIA

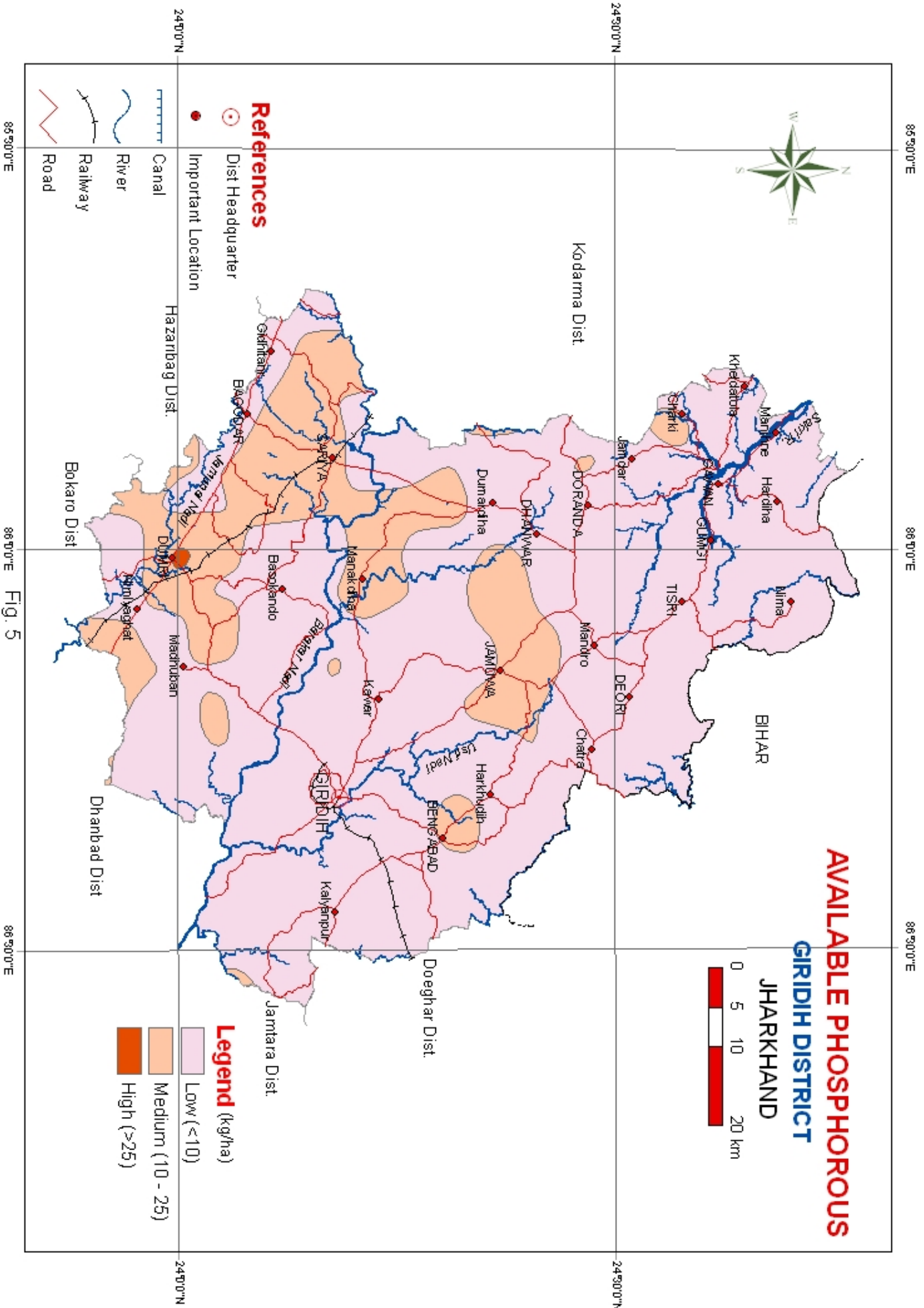


Fig. 5

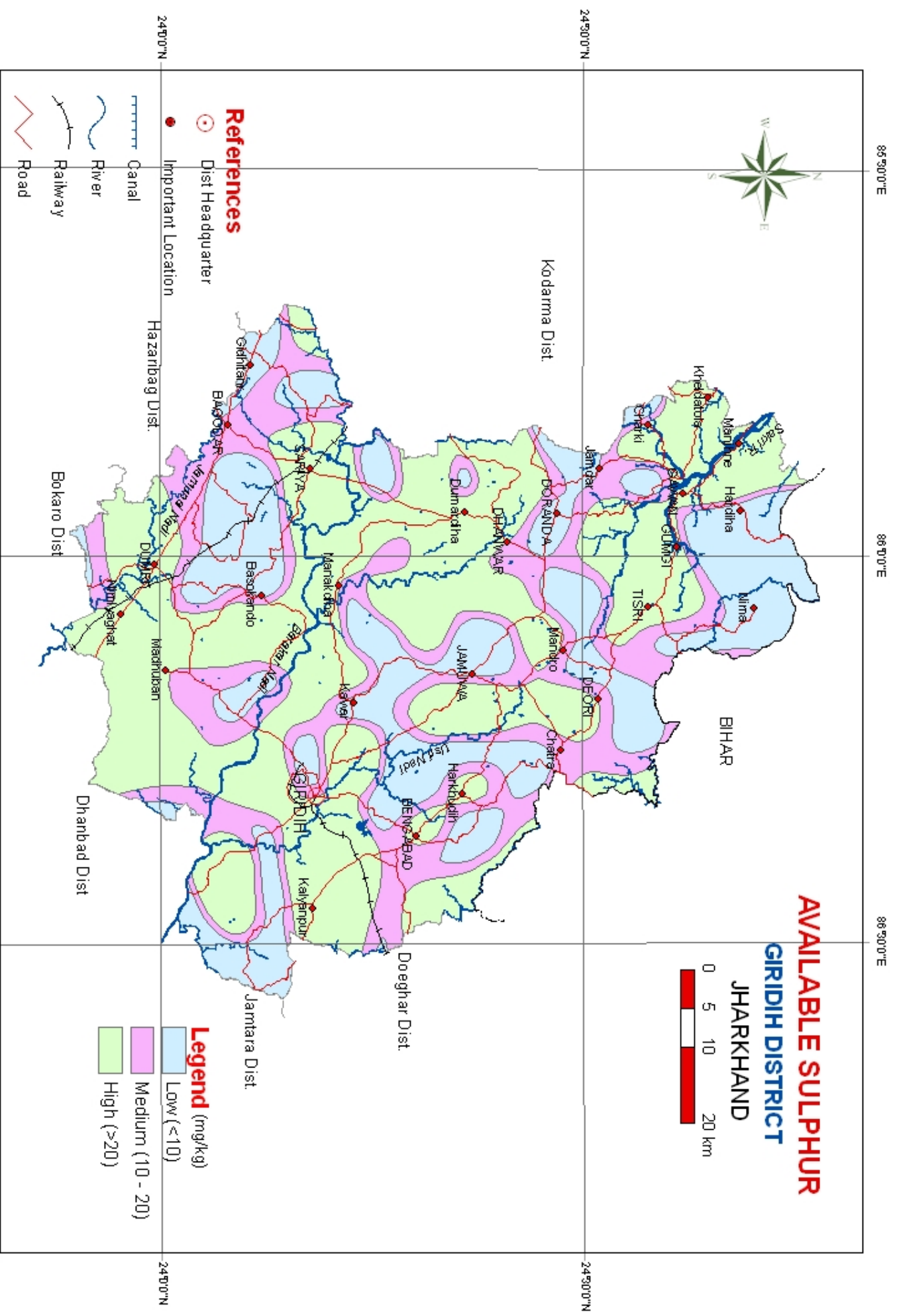


Fig. 7

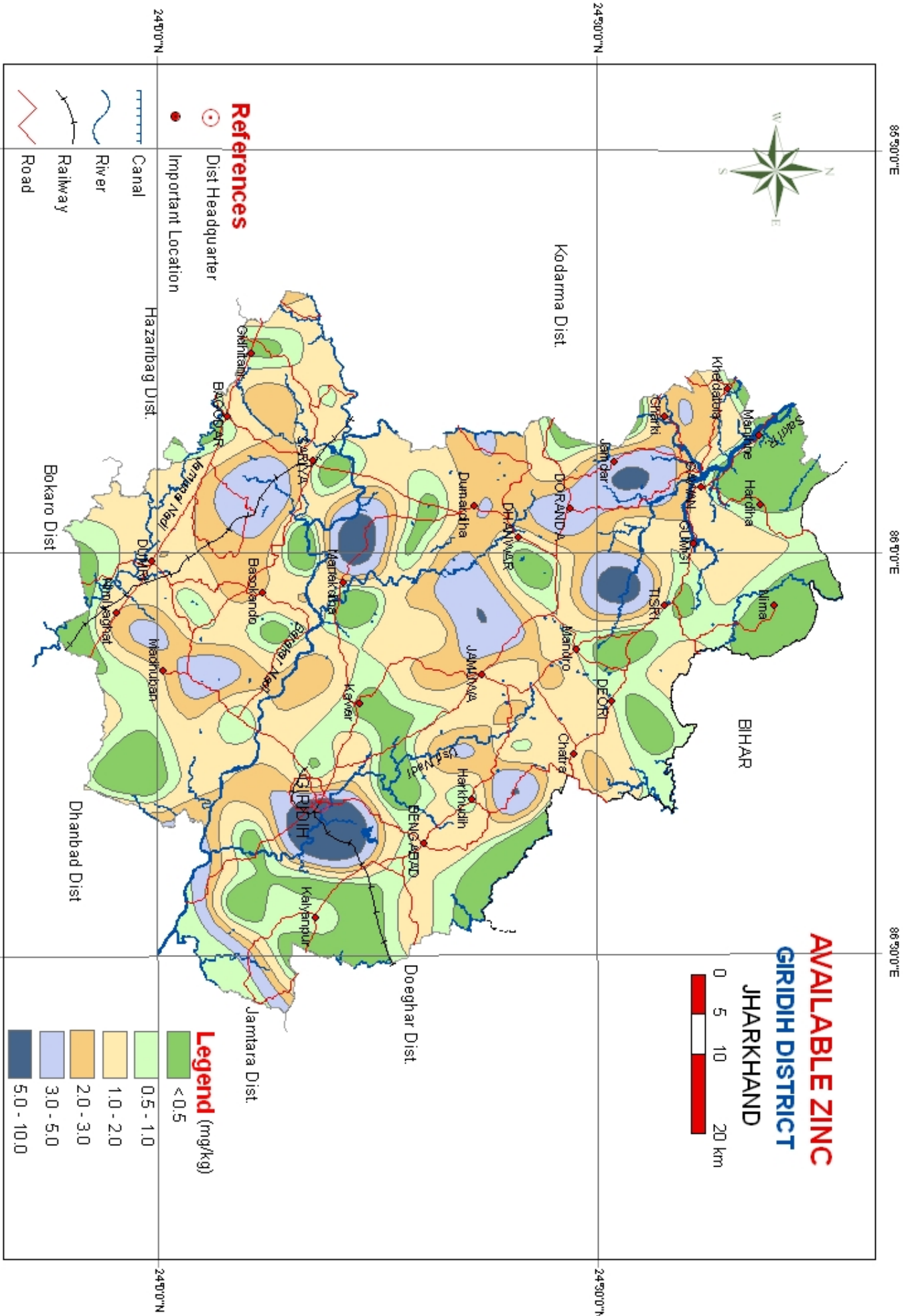


Fig. 10

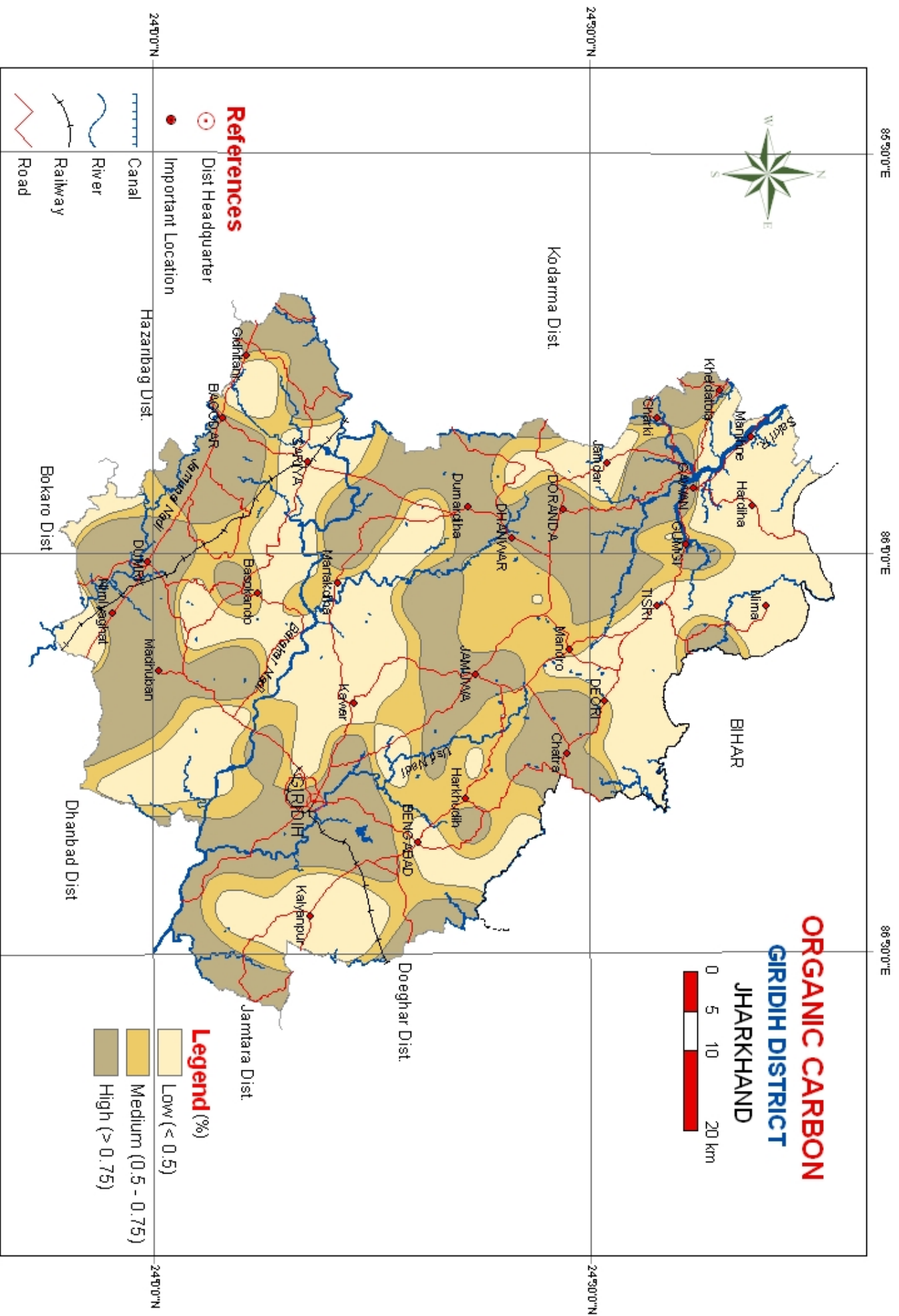


Fig. 3

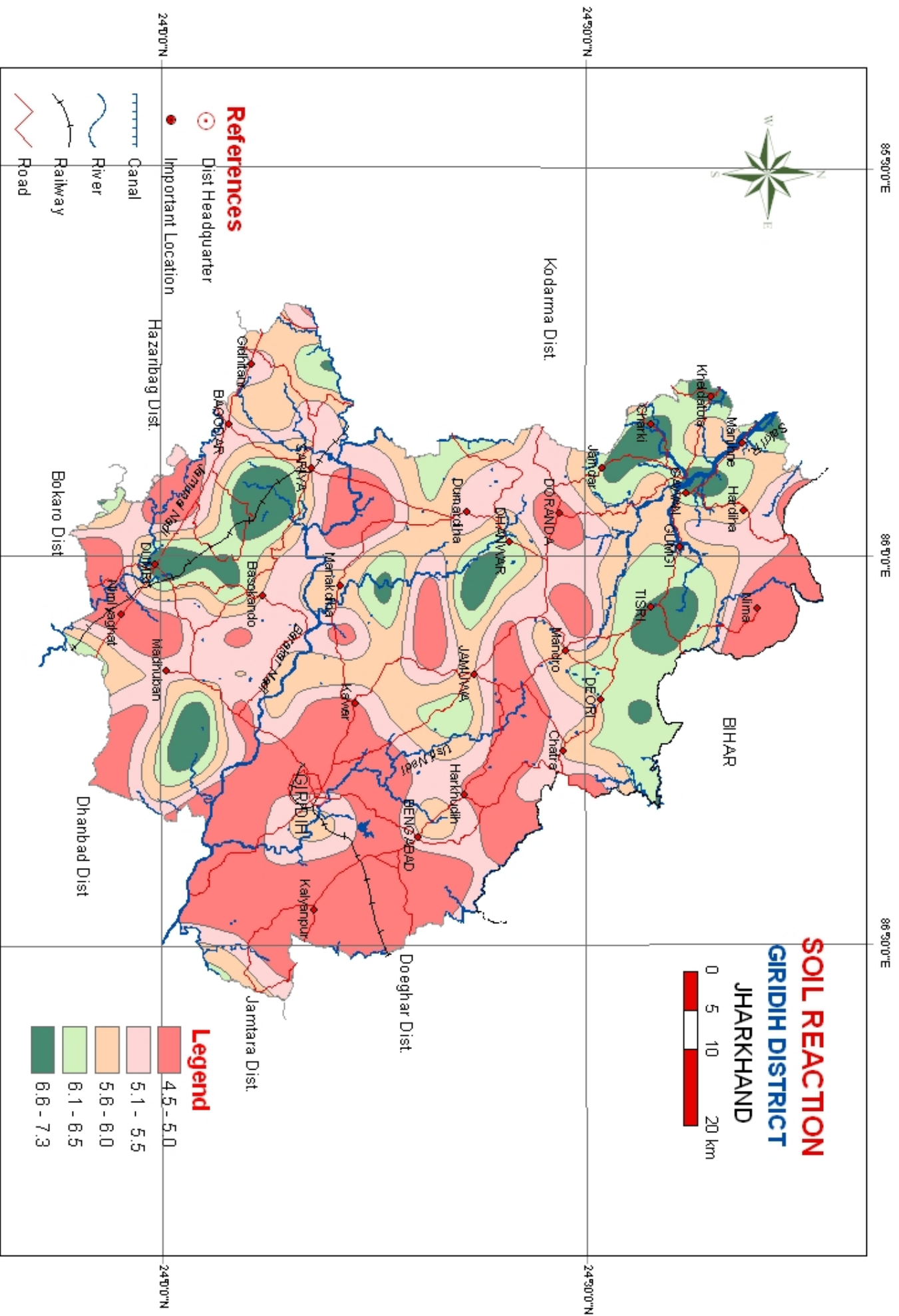


Fig. 2