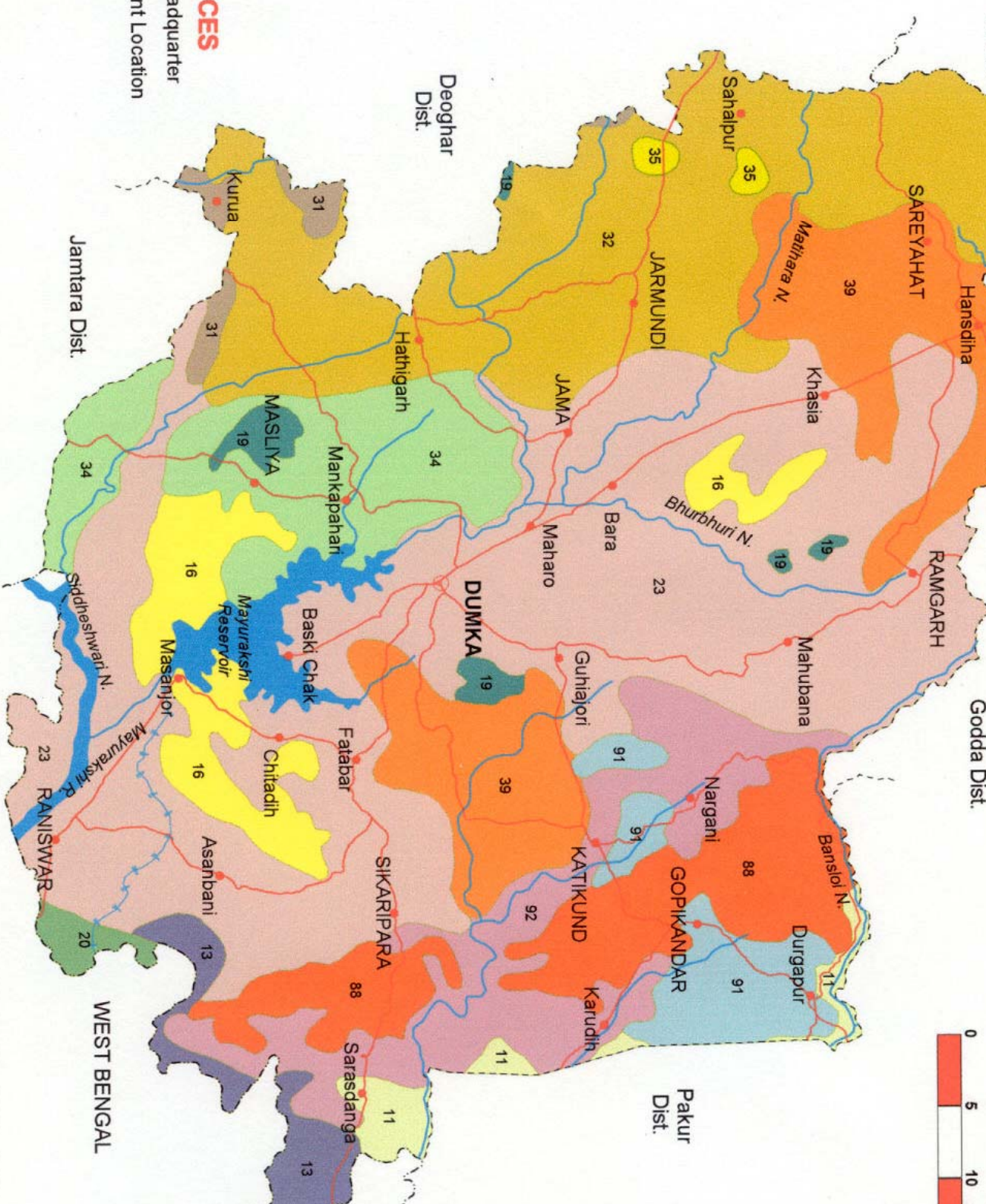
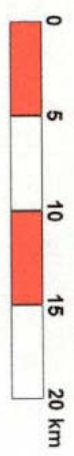




SOILS

DUMKA DISTRICT

JHARKHAND



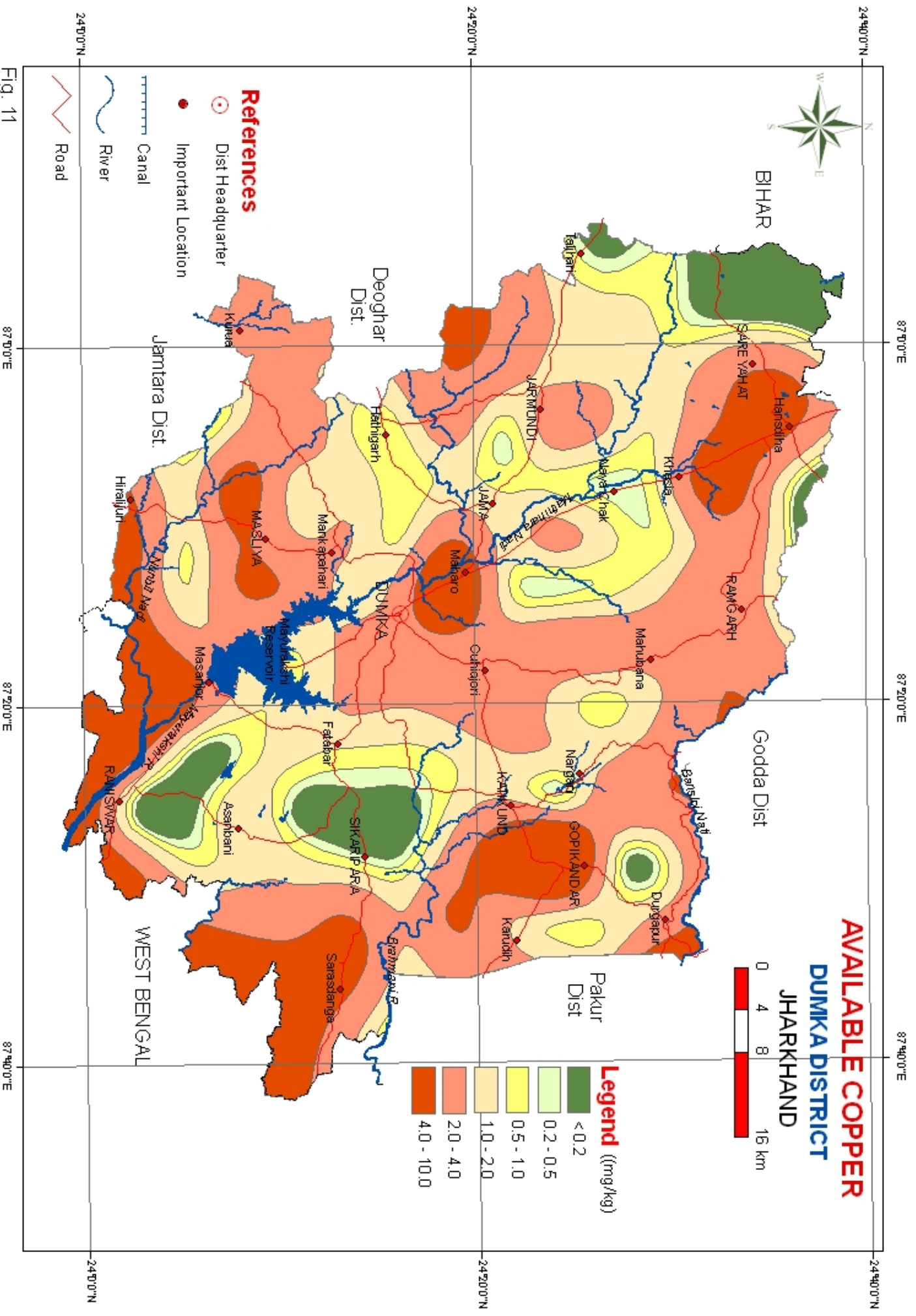
LEGEND

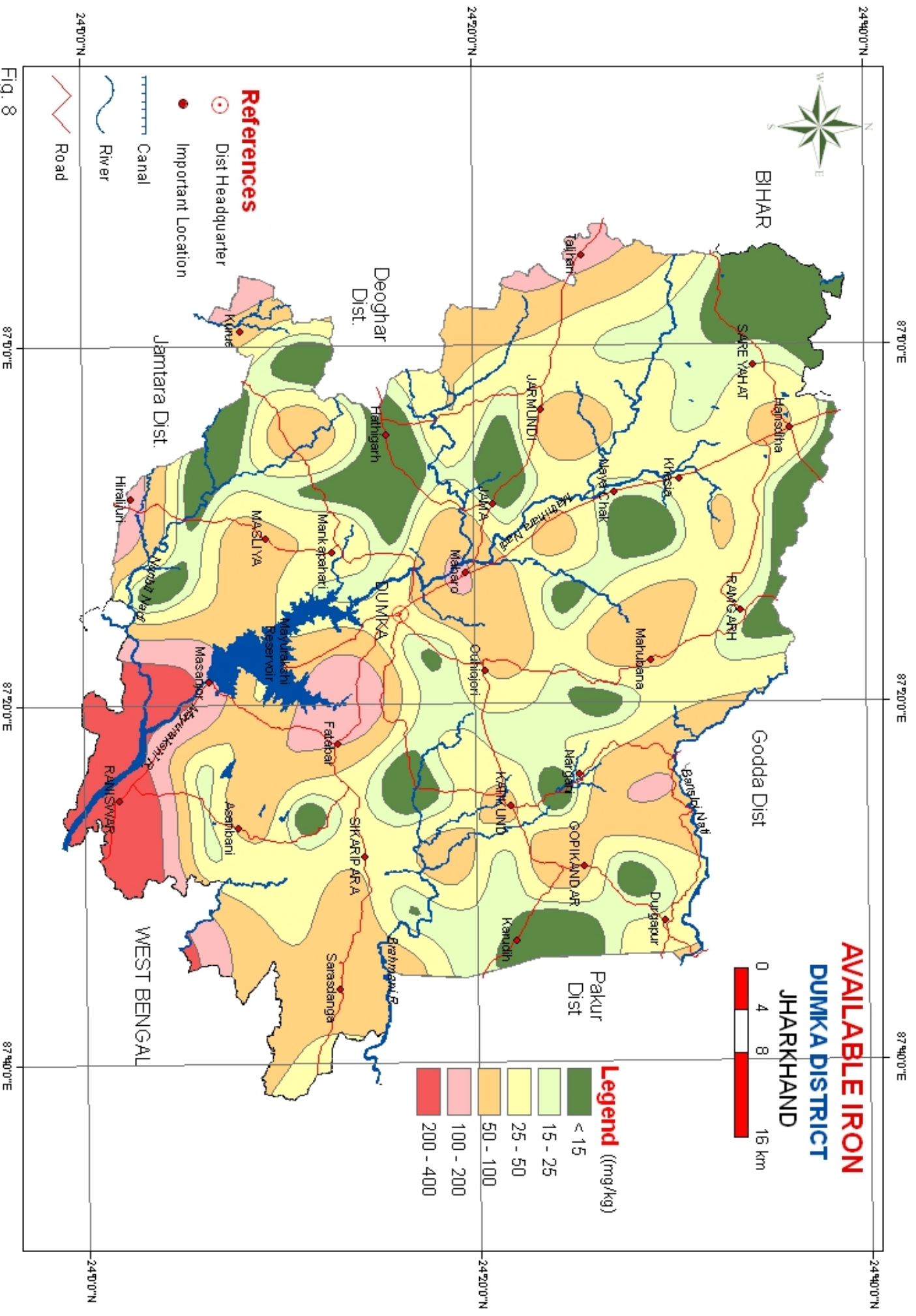
11	32
13	34
16	35
19	39
20	88
23	91
31	92

REFERENCES

- ⊙ Dist Headquarter
- Important Location
- ↔ Canal
- ↔ Road
- ↔ River

Fig. - 1





AVAILABLE IRON
DUMKA DISTRICT
JHARKHAND



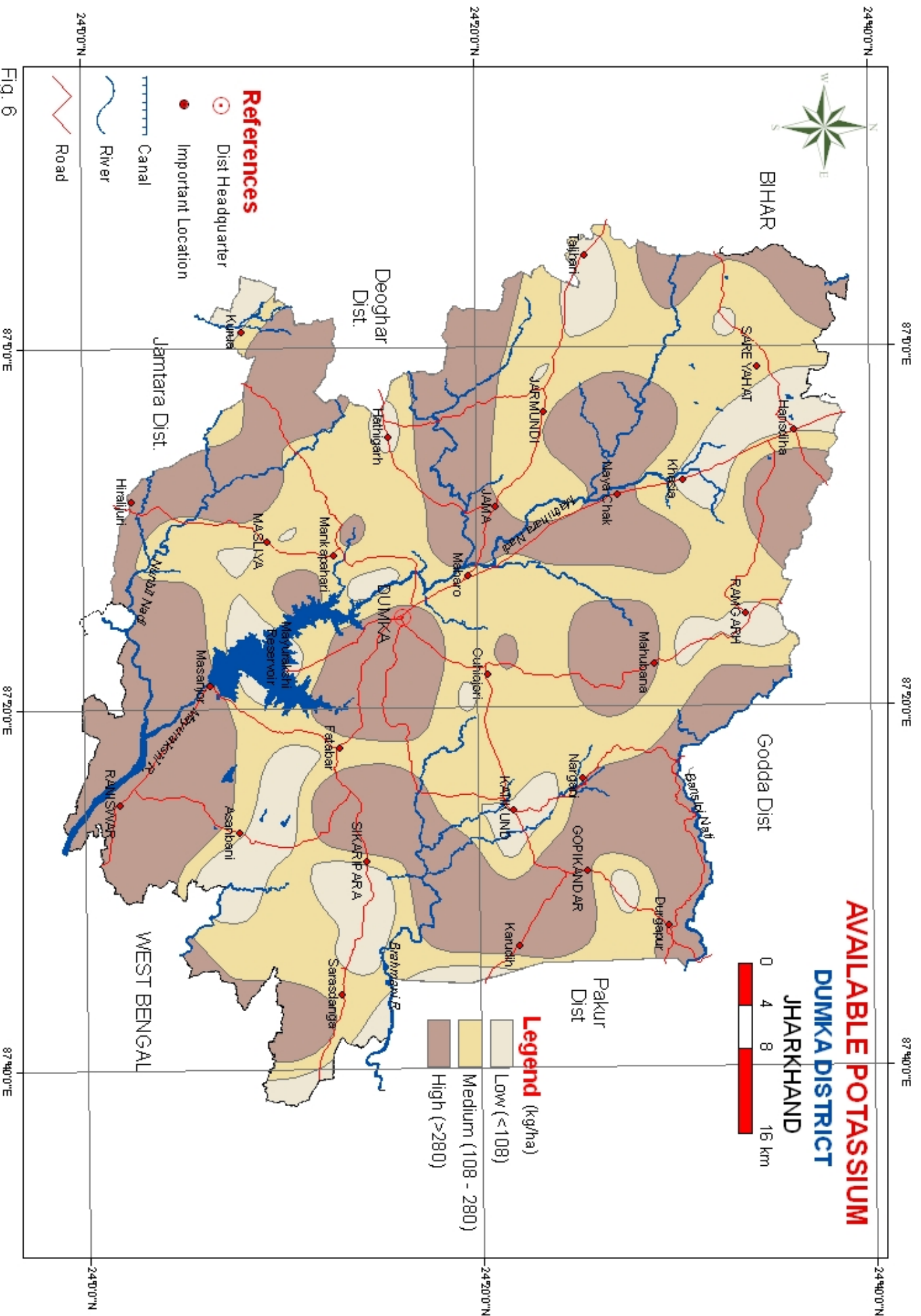
Legend ((mg/kg))

Dark Green	< 15
Light Green	15 - 25
Yellow	25 - 50
Orange	50 - 100
Pink	100 - 200
Red	200 - 400

- References**
- Dist Headquarter
 - Important Location

- Canal
- River
- Road

Fig. 8



87°00'E

87°20'E

87°40'E

24°40'N

24°20'N

24°20'N

24°40'N

Fig. 6

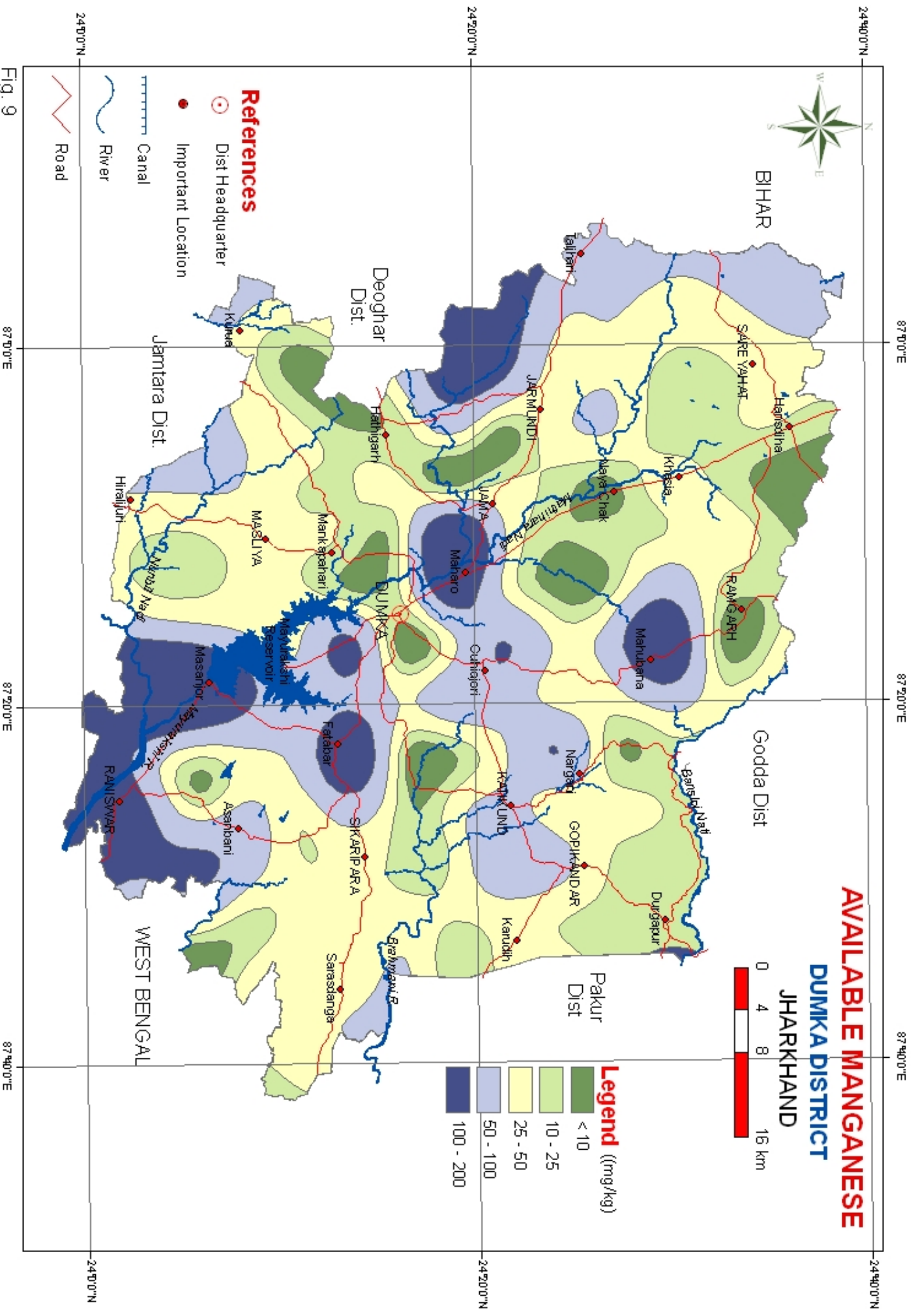
87°00'E

87°20'E

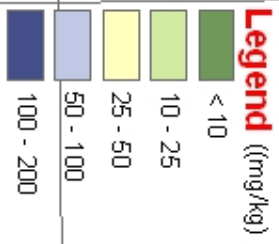
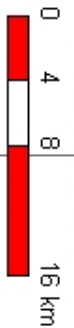
87°40'E

24°00'N

24°00'N



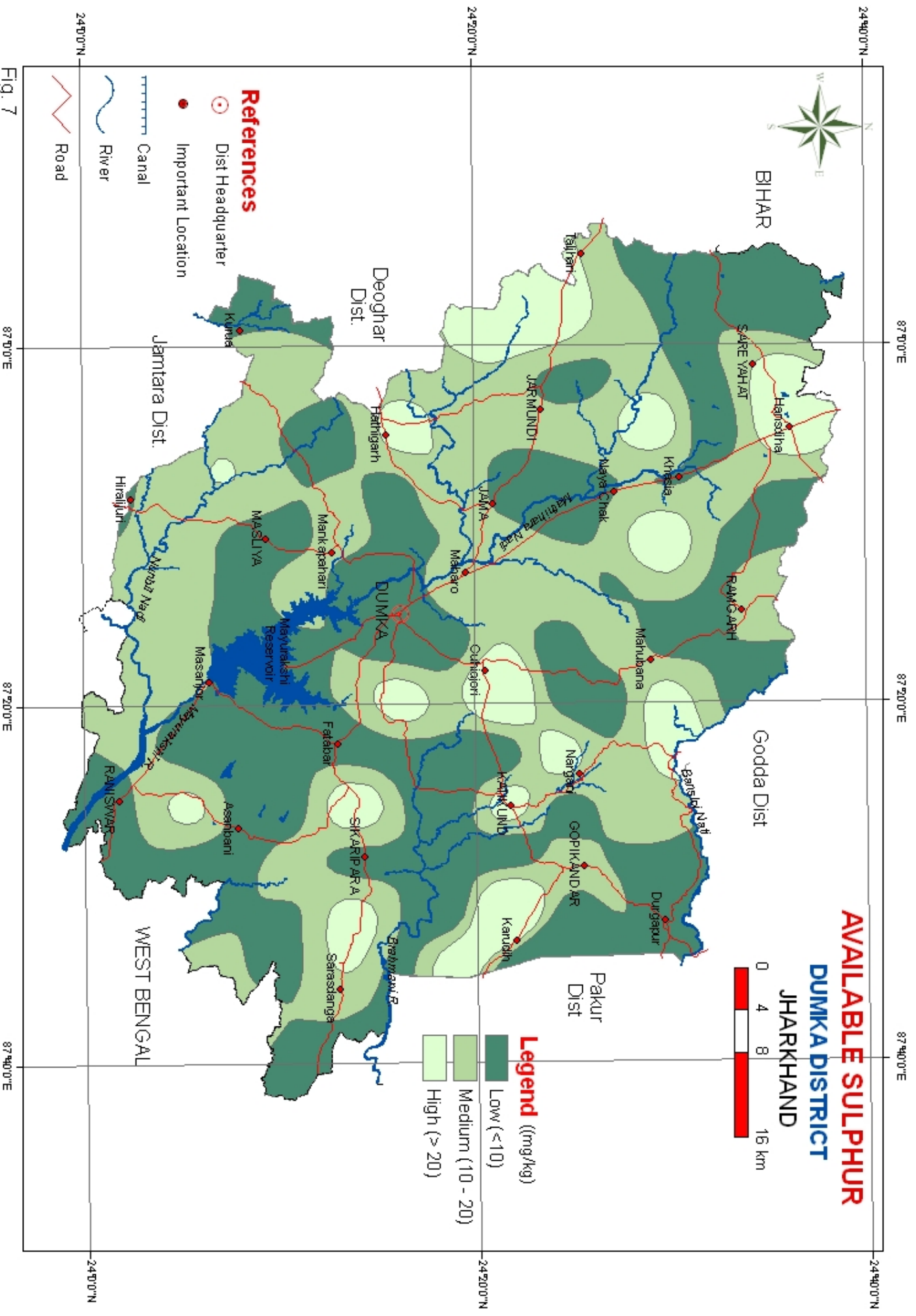
AVAILABLE MANGANESE
DUMKA DISTRICT
JHARKHAND



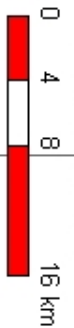
- References**
- Dist Headquarter
 - Important Location

- ~~~~~ Canal
- ~~~~~ River
- ~~~~~ Road

Fig. 9



AVAILABLE SULPHUR
DUMKA DISTRICT
JHARKHAND



- Legend (mg/kg)**
- Low (<10)
 - Medium (10 - 20)
 - High (> 20)

- References**
- Dist Headquarter
 - Important Location

- Canal
- River
- Road

Fig. 7

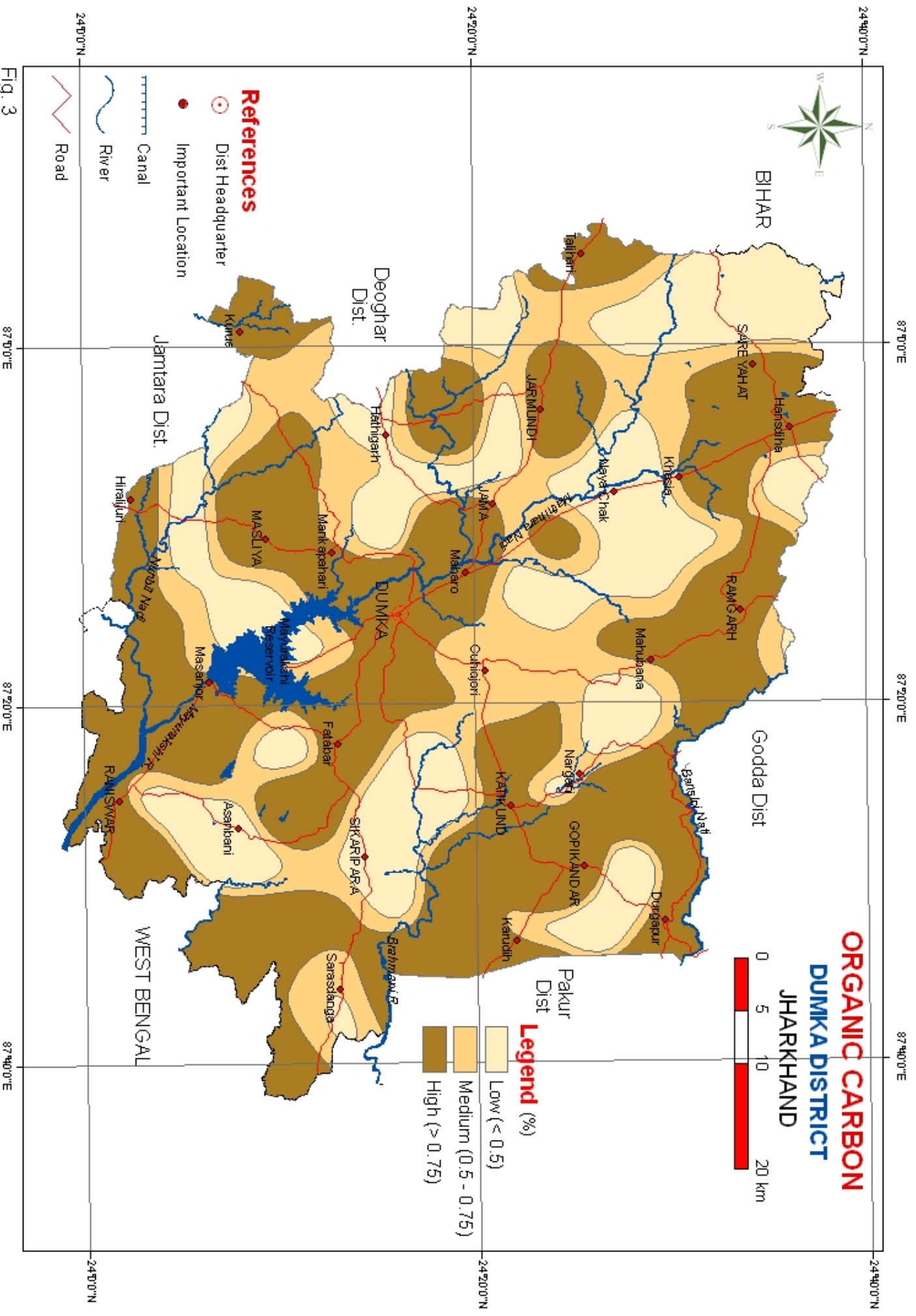


Fig. 3