

Fig. 3

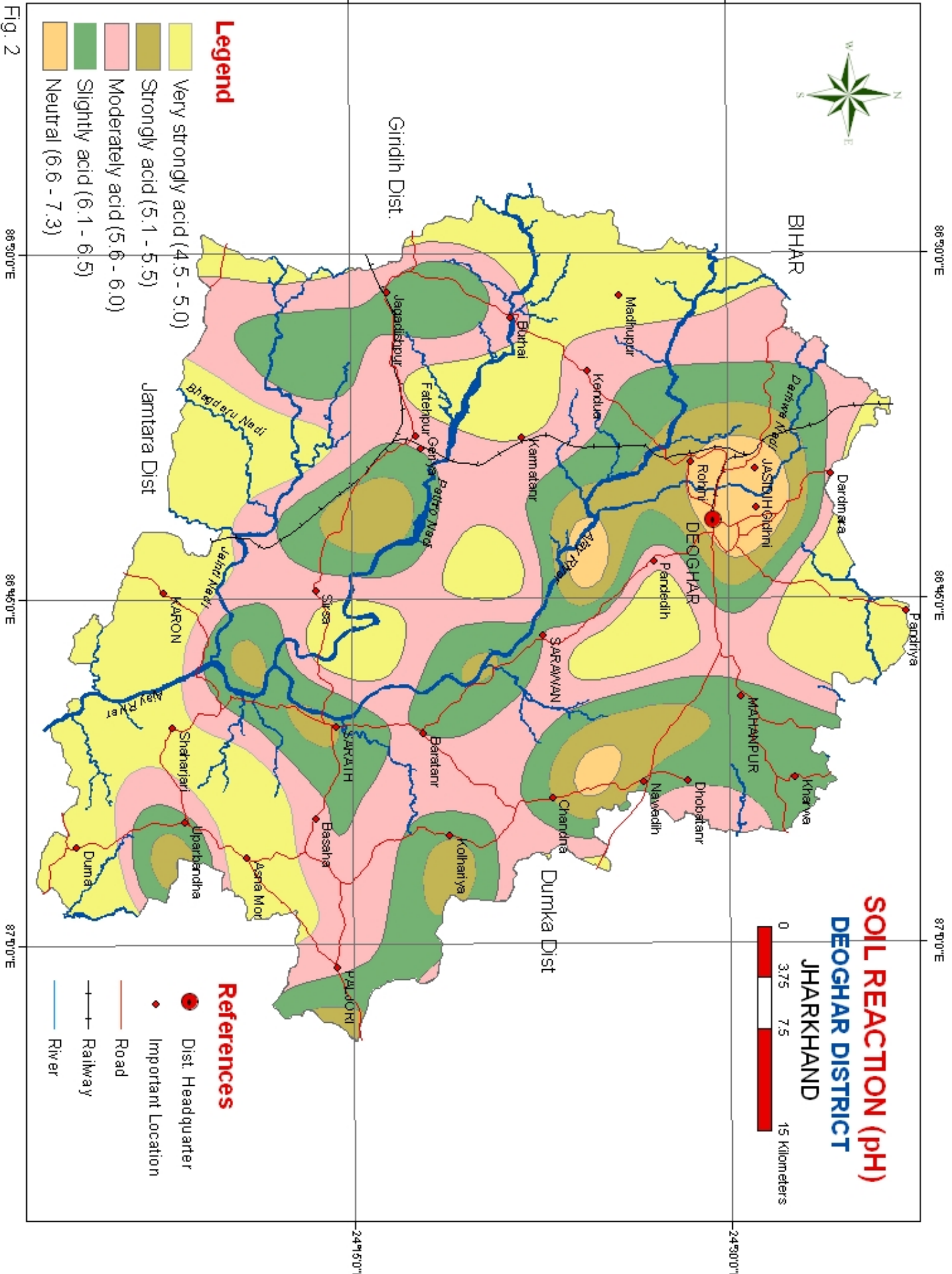


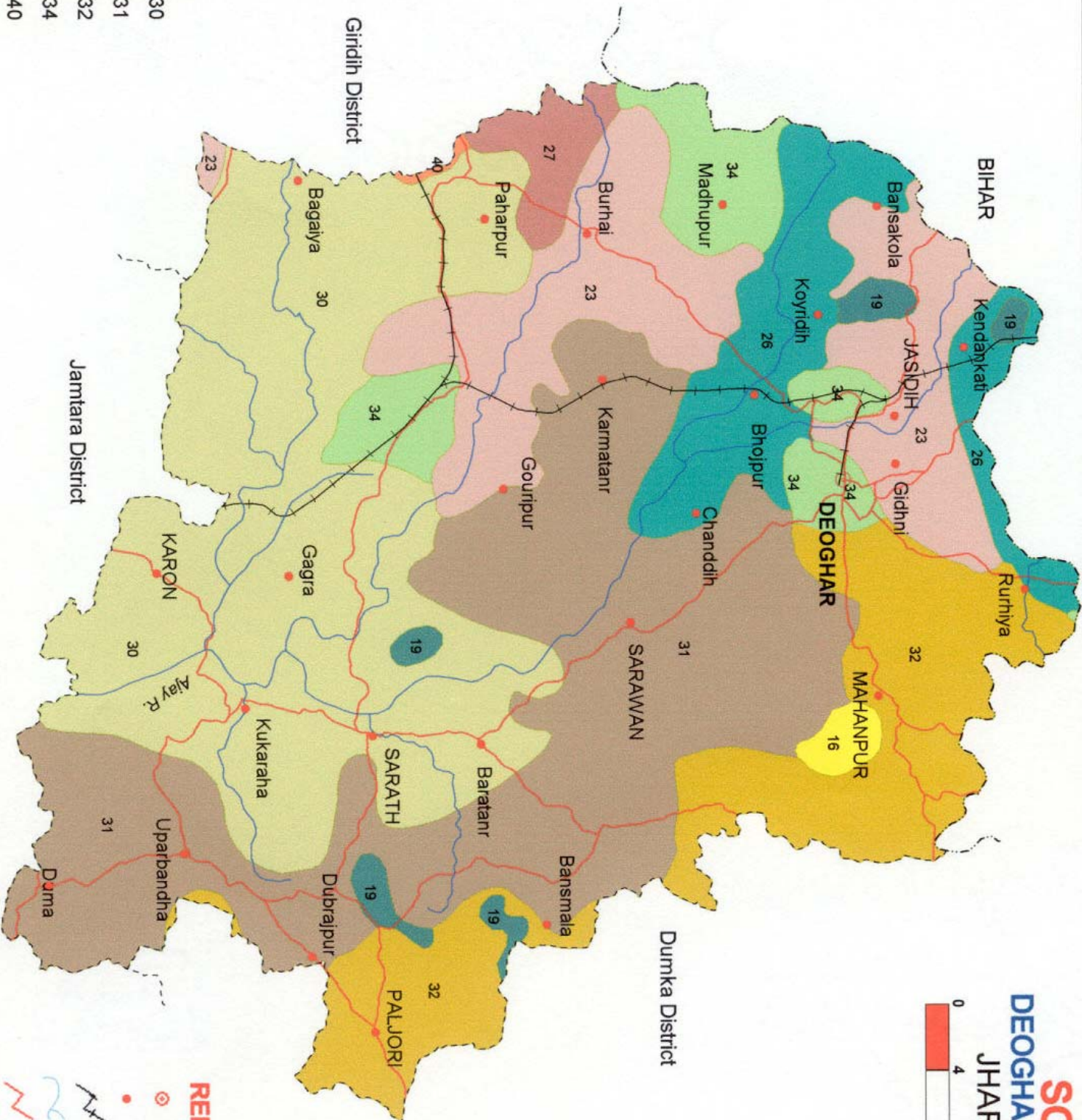
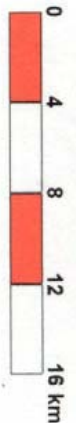
Fig. 2



SOILS

DEOGHAR DISTRICT

JHARKHAND



LEGEND

| | |
|----|----|
| 16 | 30 |
| 19 | 31 |
| 23 | 32 |
| 26 | 34 |
| 27 | 40 |

REFERENCES

| | |
|--|--------------------|
| | Dist Headquarter |
| | Important Location |
| | Railway |
| | River |
| | Road |

Fig. - 1

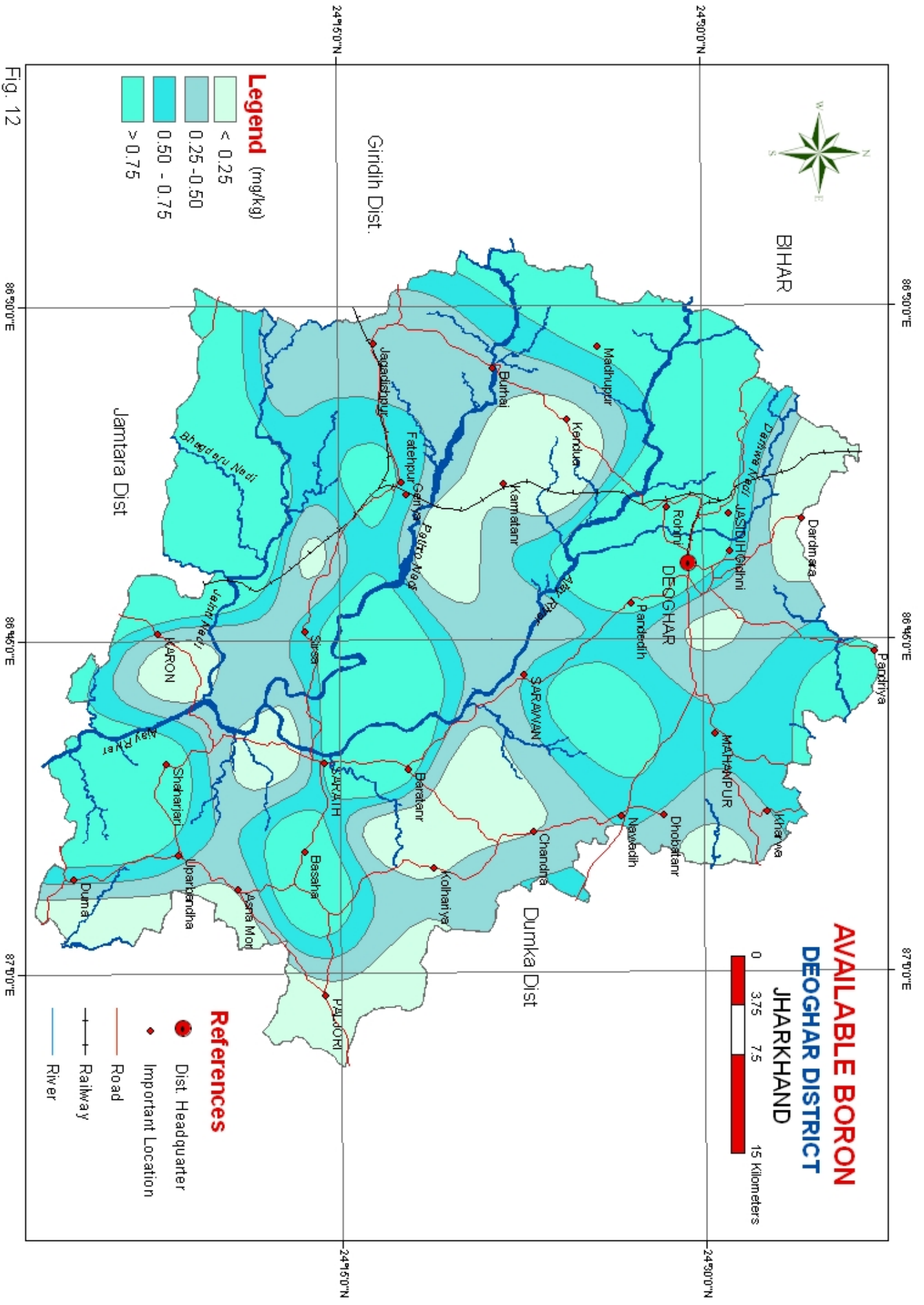


Fig. 12

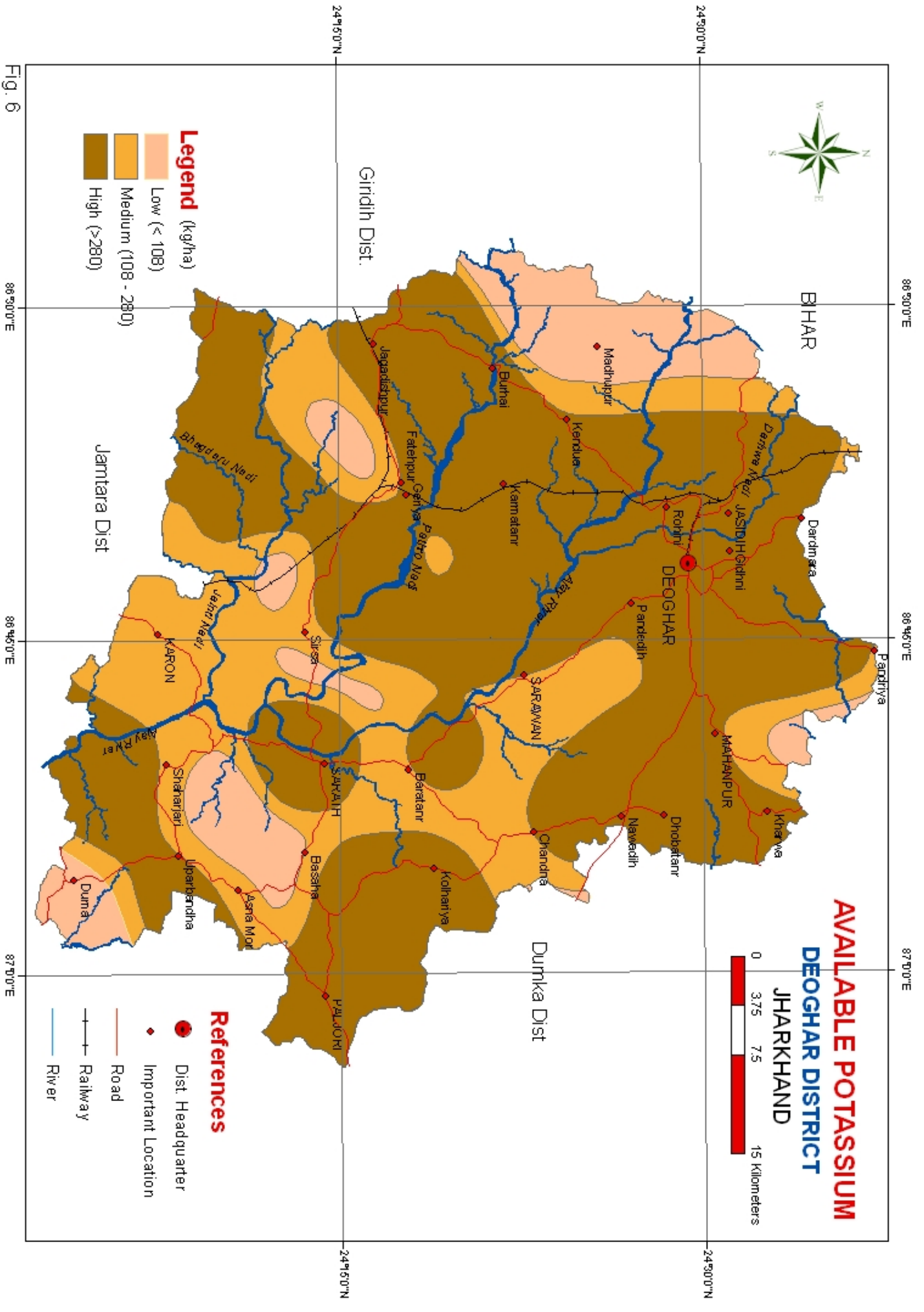


Fig. 6

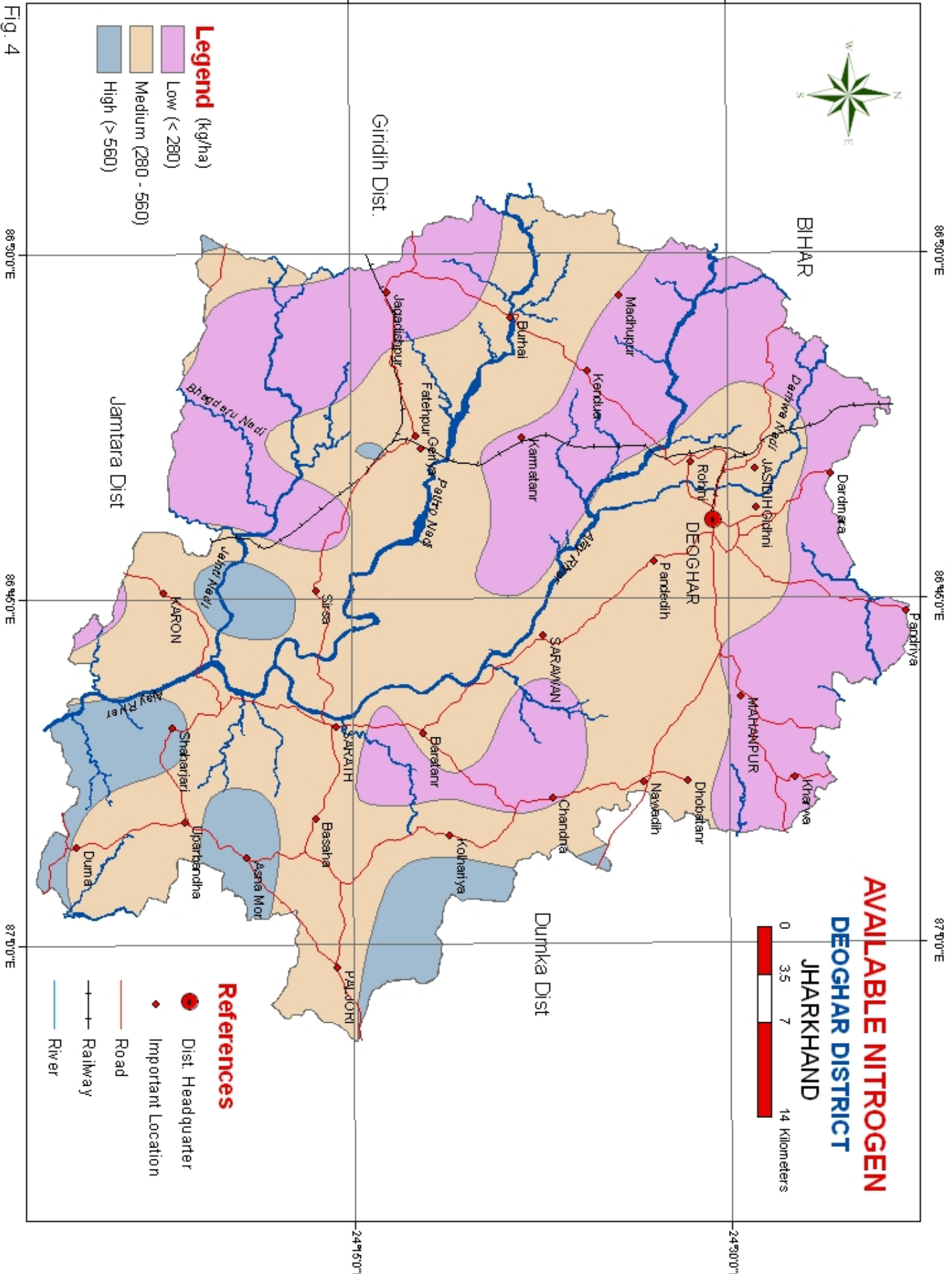


Fig. 4

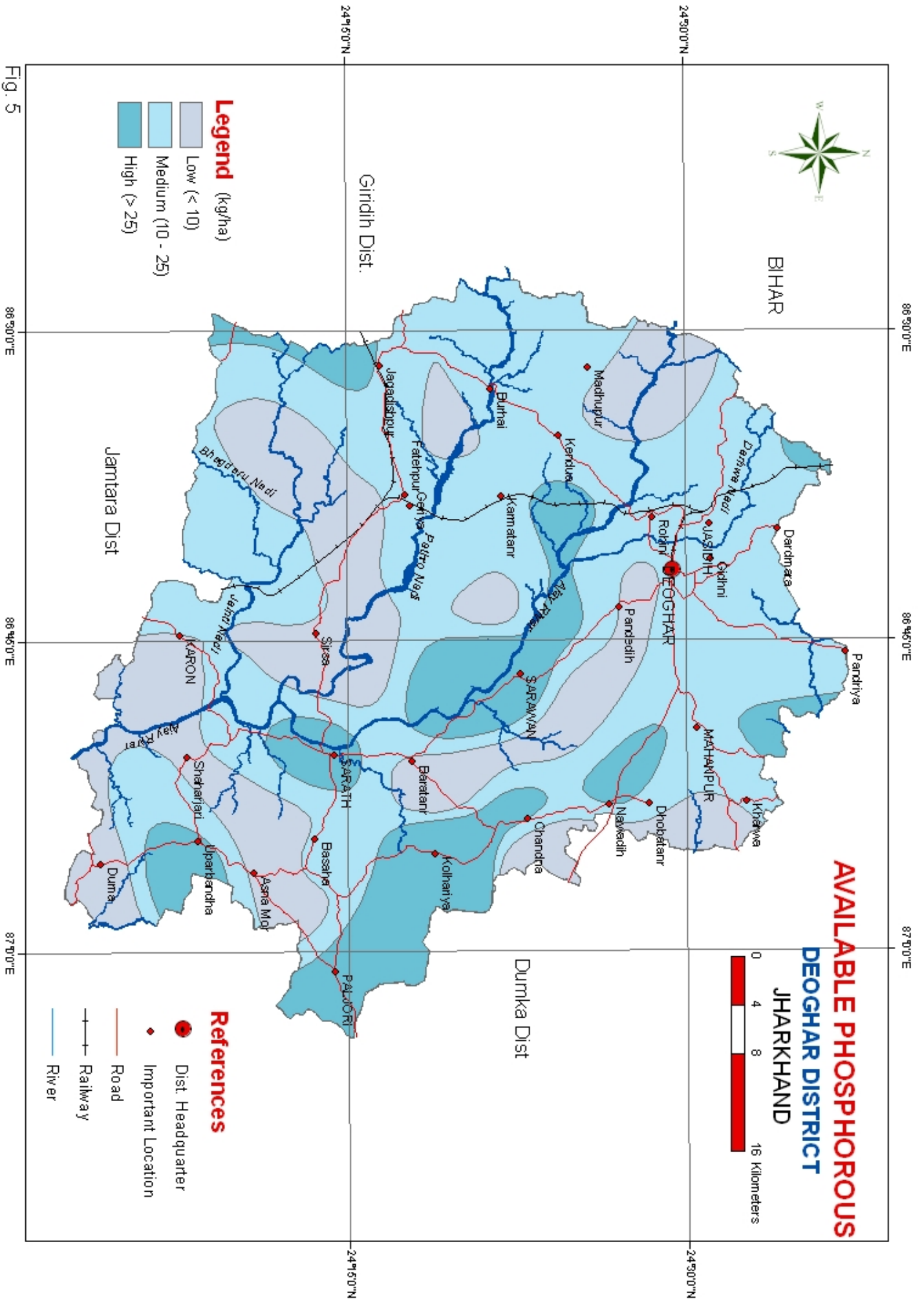
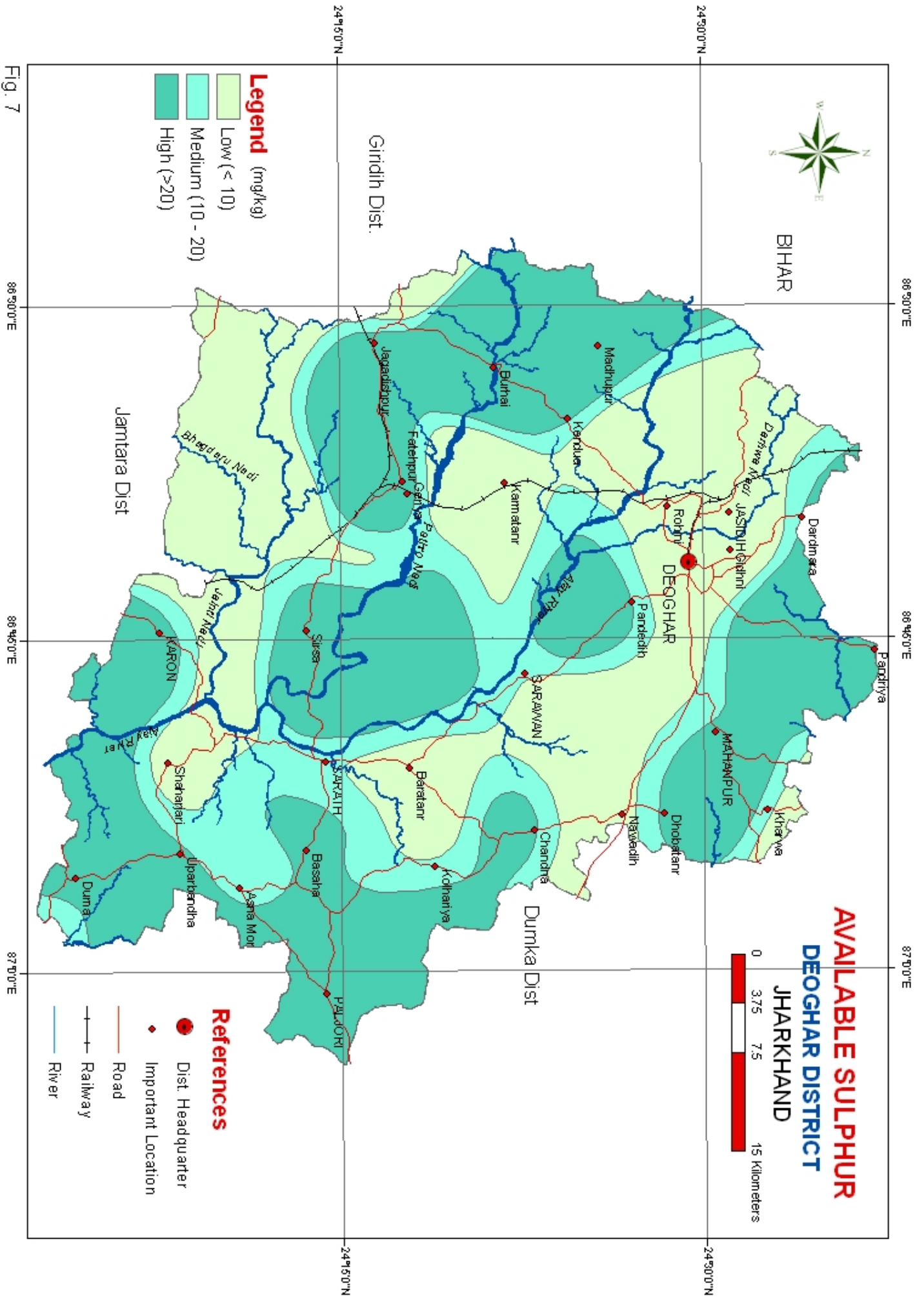
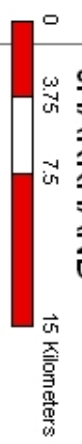


Fig. 5



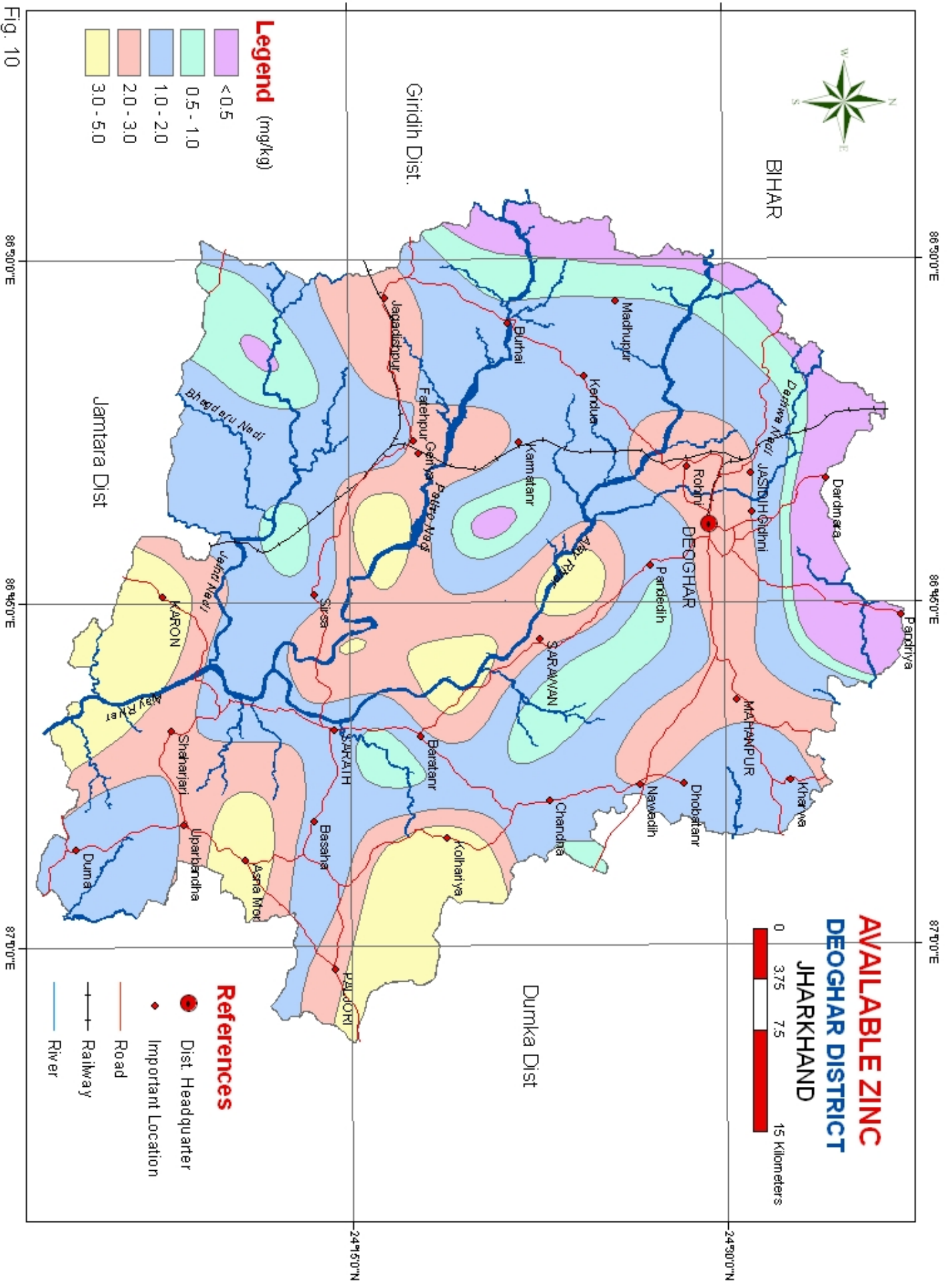
AVAILABLE SULPHUR
DEOGHAR DISTRICT
JHARKHAND



- Legend (mg/kg)**
- Low (< 10)
 - Medium (10 - 20)
 - High (>20)

- References**
- Dist. Headquarter
 - ◆ Important Location
 - Road
 - +— Railway
 - River

Fig. 7



86°50'0"E

86°45'0"E

87°0'0"E

BIHAR

Giridih Dist.

Jamtara Dist

Dumka Dist

DEOGHAR

JASIDIH

MATIHAMPUR

PAUDORI



- Legend (mg/kg)**
- < 0.5
 - 0.5 - 1.0
 - 1.0 - 2.0
 - 2.0 - 3.0
 - 3.0 - 5.0

- References**
- Dist. Headquarter
 - Important Location
 - Road
 - Railway
 - River

Fig. 10

86°50'0"E

86°45'0"E

87°0'0"E

24°50'0"N

24°50'0"N

24°50'0"N

24°50'0"N