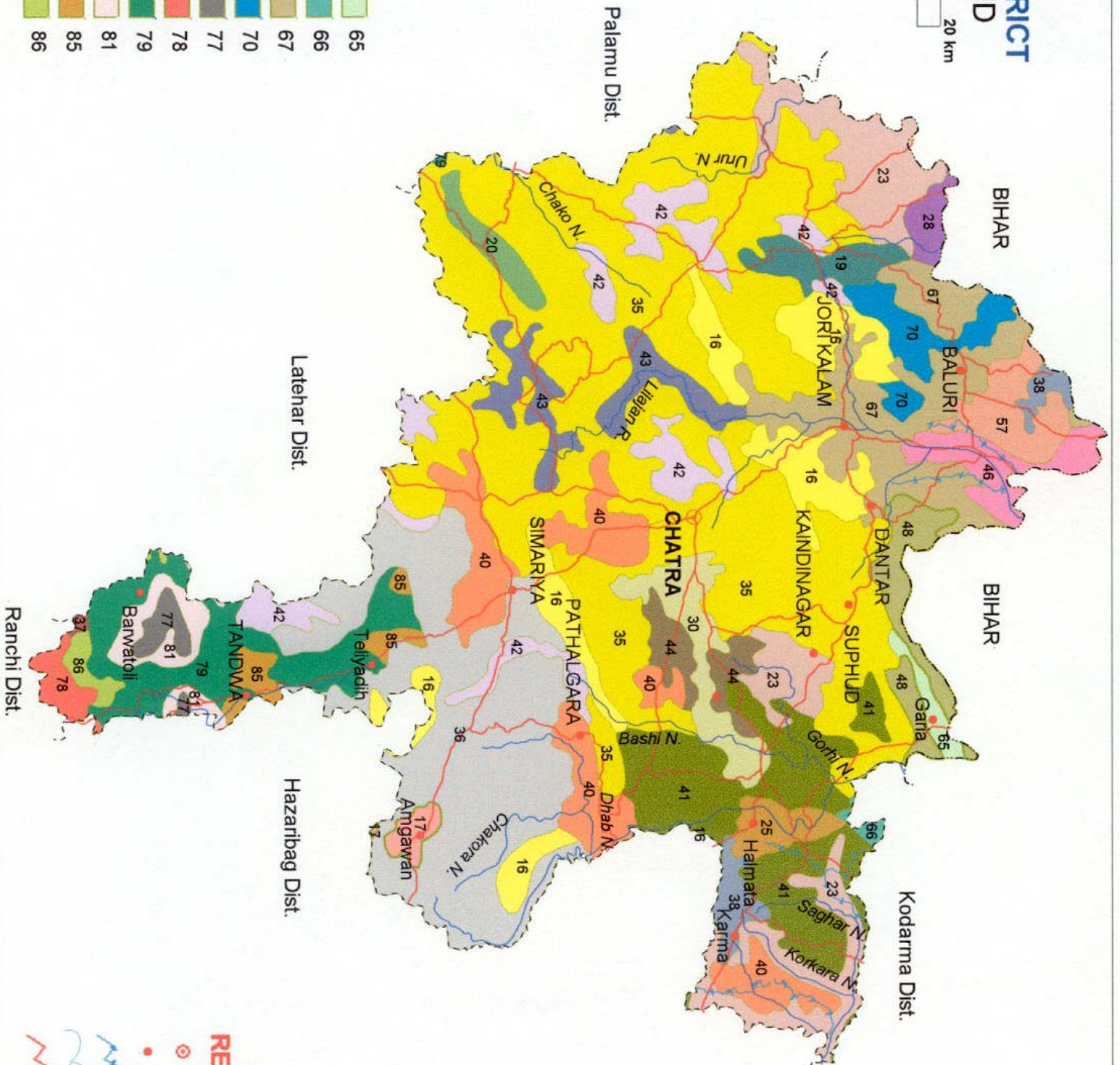
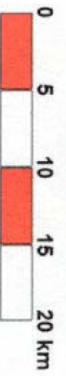


# SOILS

## CHATTRA DISTRICT JHARKHAND



### LEGEND

|    |    |    |
|----|----|----|
| 16 | 37 | 65 |
| 17 | 38 | 66 |
| 19 | 40 | 67 |
| 20 | 41 | 70 |
| 23 | 42 | 77 |
| 25 | 43 | 78 |
| 28 | 44 | 79 |
| 30 | 46 | 81 |
| 35 | 48 | 85 |
| 36 | 57 | 86 |

### REFERENCES

- Dist Headquarter
- Important Location
- Canal
- River
- Road

Fig. - 1

# AVAILABLE BORON CHARTRA DISTRICT

JHARKHAND

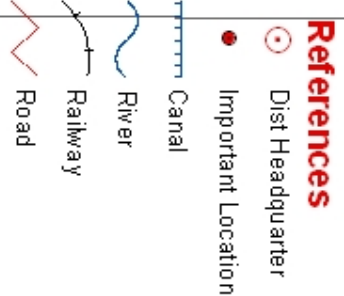
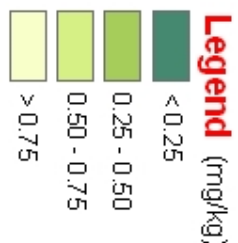
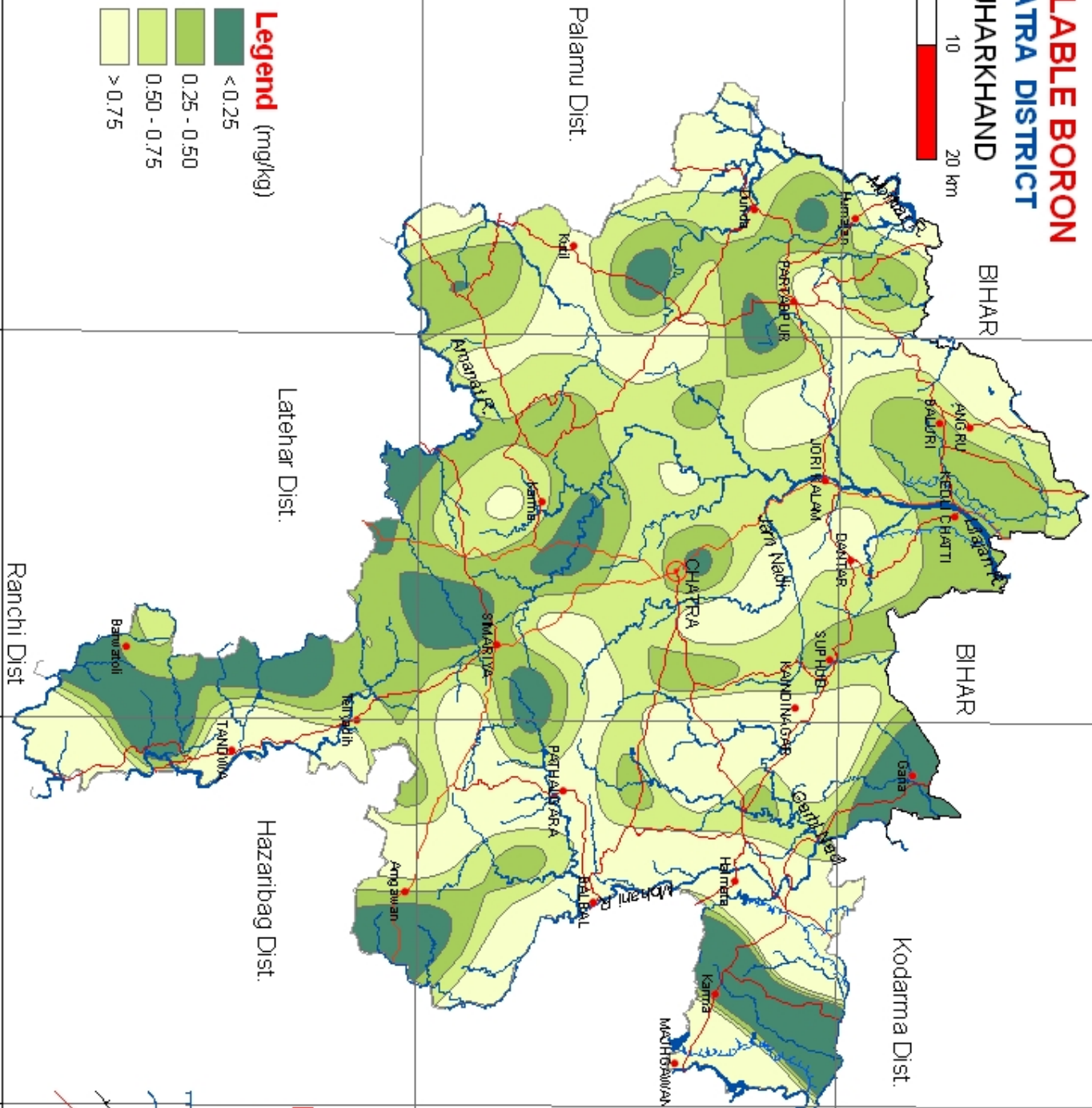
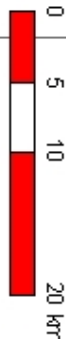


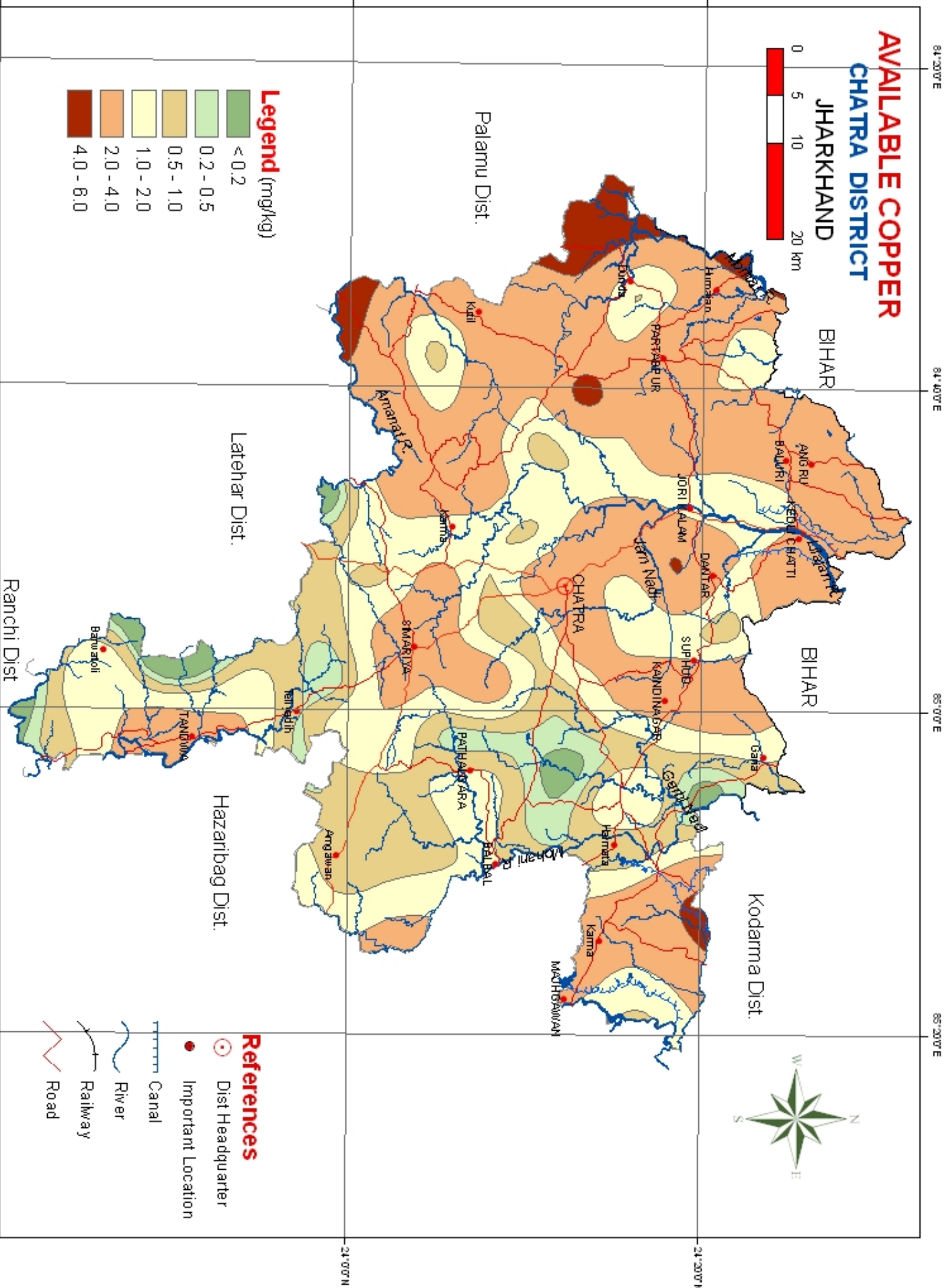
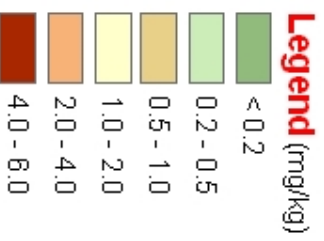
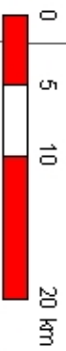
Fig. 12

23° 40' 0" N 84° 20' 0" E 24° 00' 0" N 84° 40' 0" E 24° 20' 0" N 85° 00' 0" E 24° 40' 0" N 85° 20' 0" E 25° 00' 0" N 85° 40' 0" E

Palamu Dist. Latehar Dist. Hazaribag Dist. Ranchi Dist. Chattra Dist. Jharkhand Bihar Kodarma Dist.

# AVAILABLE COPPER CHARTRA DISTRICT

JHARKHAND



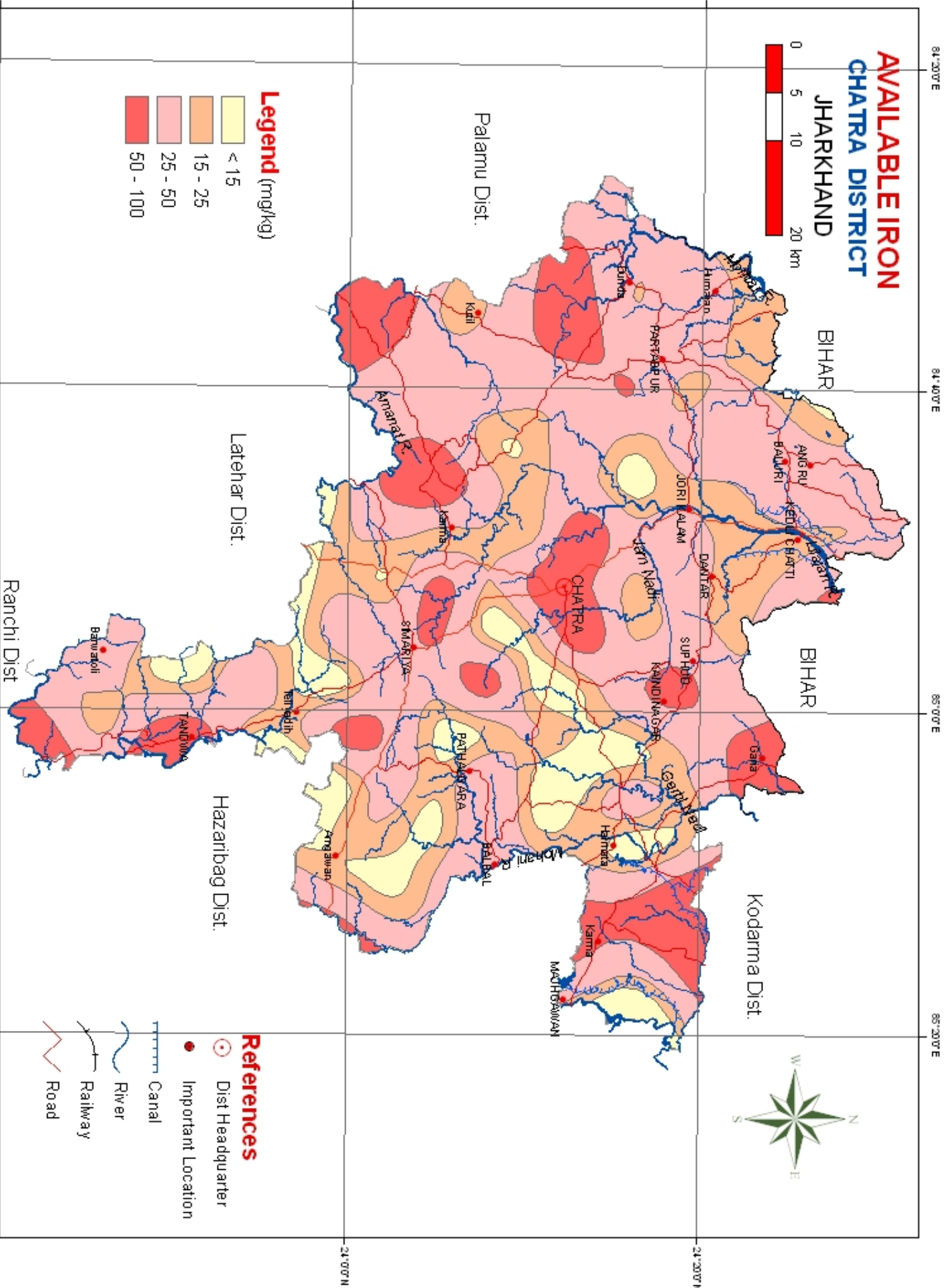
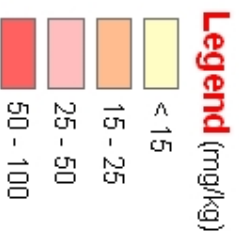
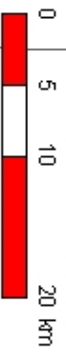
**References**

- Dist Headquarter
- Important Location
- Canal
- River
- Railway
- Road

Fig. 11

# AVAILABLE IRON CHATTRA DISTRICT

JHARKHAND



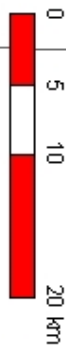
## References

- Dist Headquarter
- Important Location
- Canal
- River
- Railway
- Road

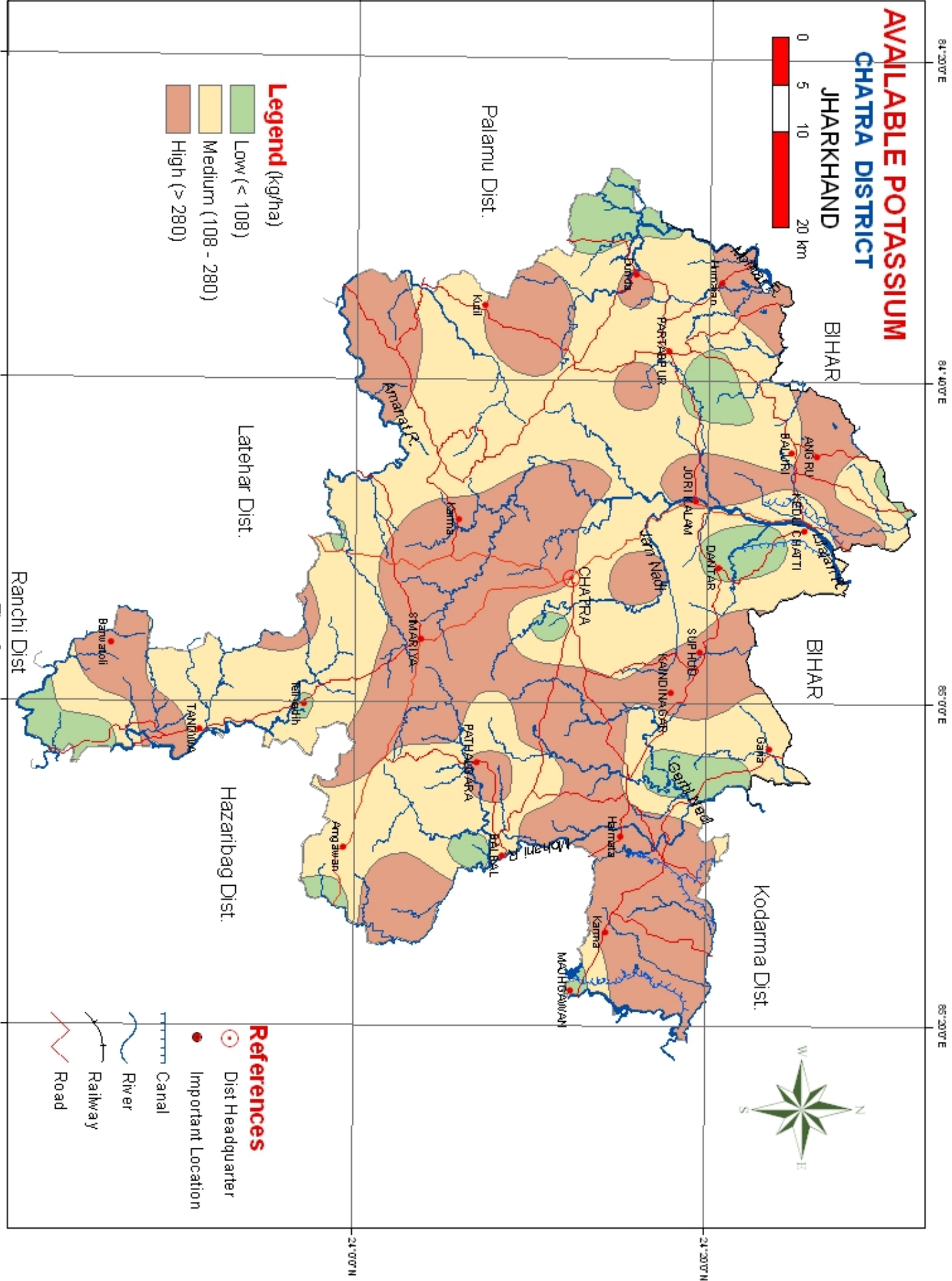
Fig. 8

# AVAILABLE POTASSIUM CHATTRA DISTRICT

JHARKHAND



- Legend (kg/ha)**
- Low (< 108)
  - Medium (108 - 280)
  - High (> 280)



**References**

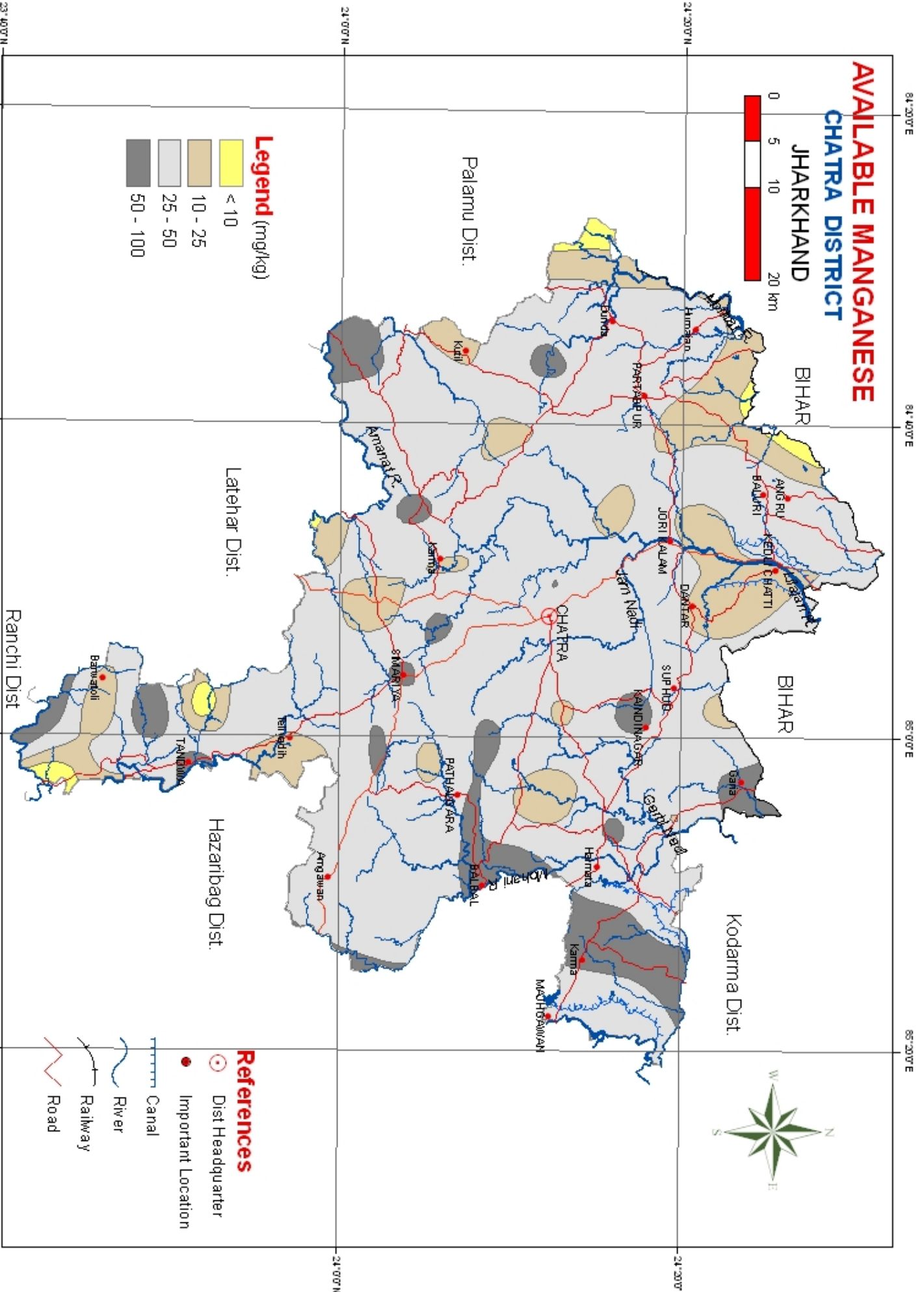
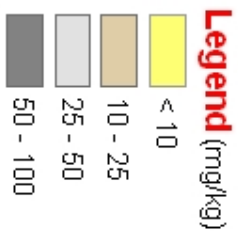
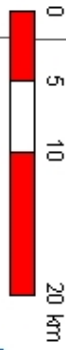
- Dist Headquarter
- Important Location
- Canal
- River
- Railway
- Road



Fig. 6

# AVAILABLE MANGANESE CHARTRA DISTRICT

JHARKHAND



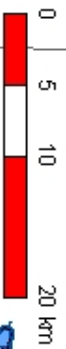
## References

- Dist Headquarter
- Important Location
- Canal
- River
- Railway
- Road



Fig. 9

# AVAILABLE NITROGEN CHATTRA DISTRICT JHARKHAND



**References**

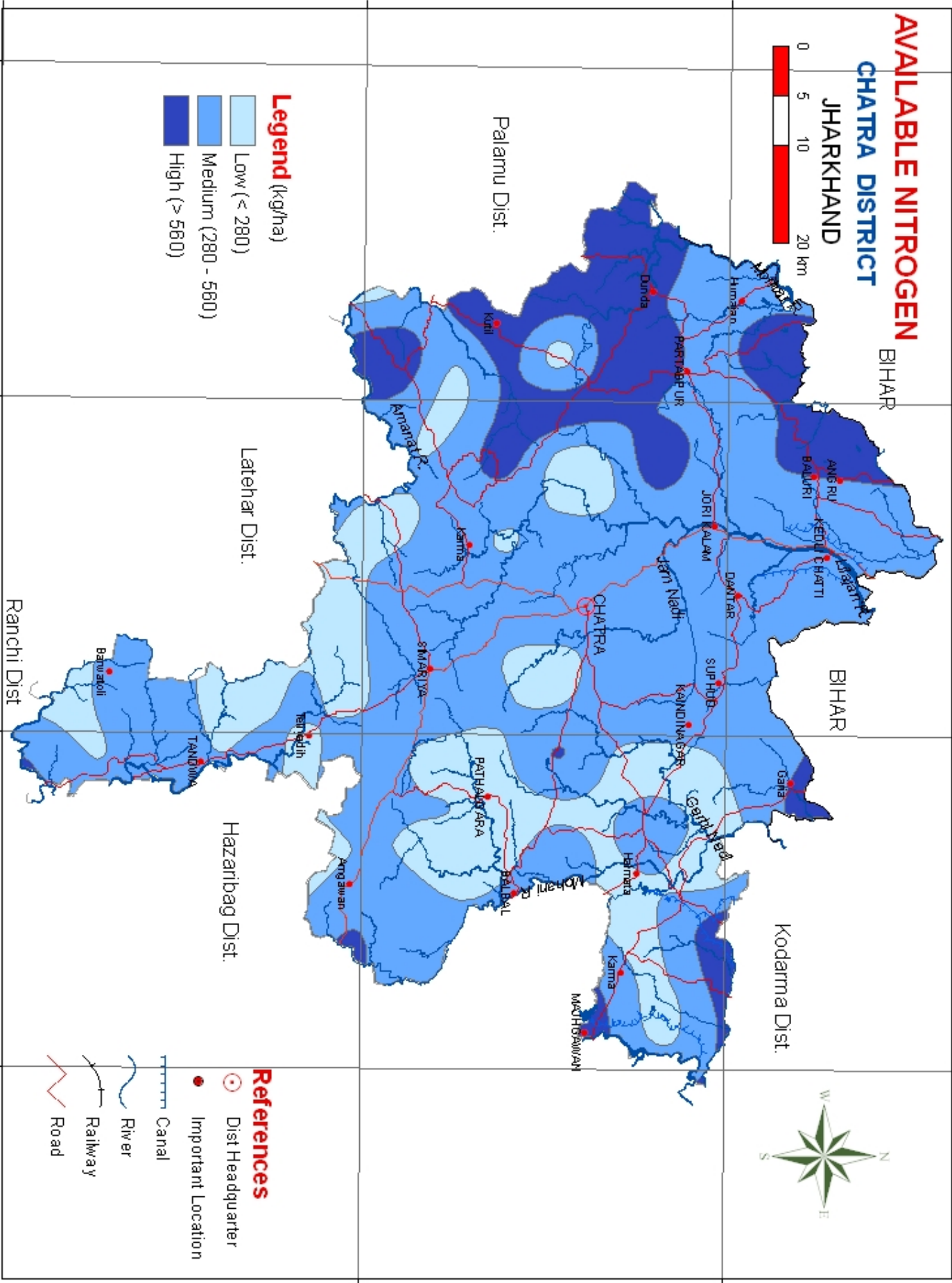
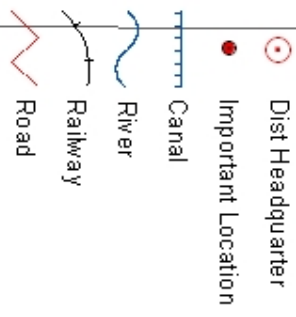
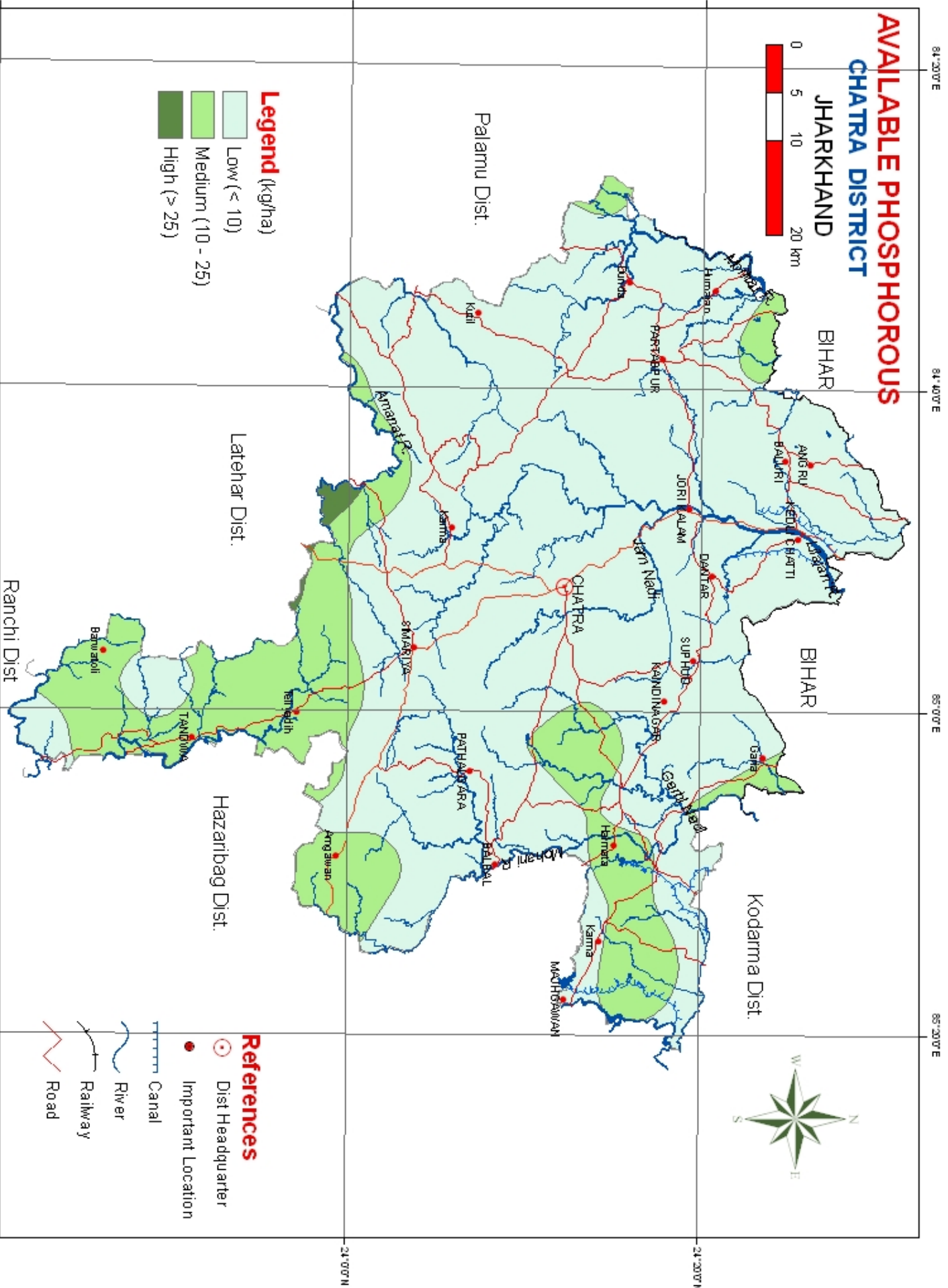
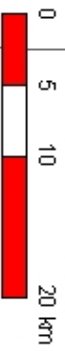


Fig. 4

# AVAILABLE PHOSPHOROUS CHATTRA DISTRICT

JHARKHAND



**References**

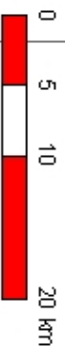
- Dist Headquarter
- Important Location
- Canal
- River
- Railway
- Road

Fig. 5

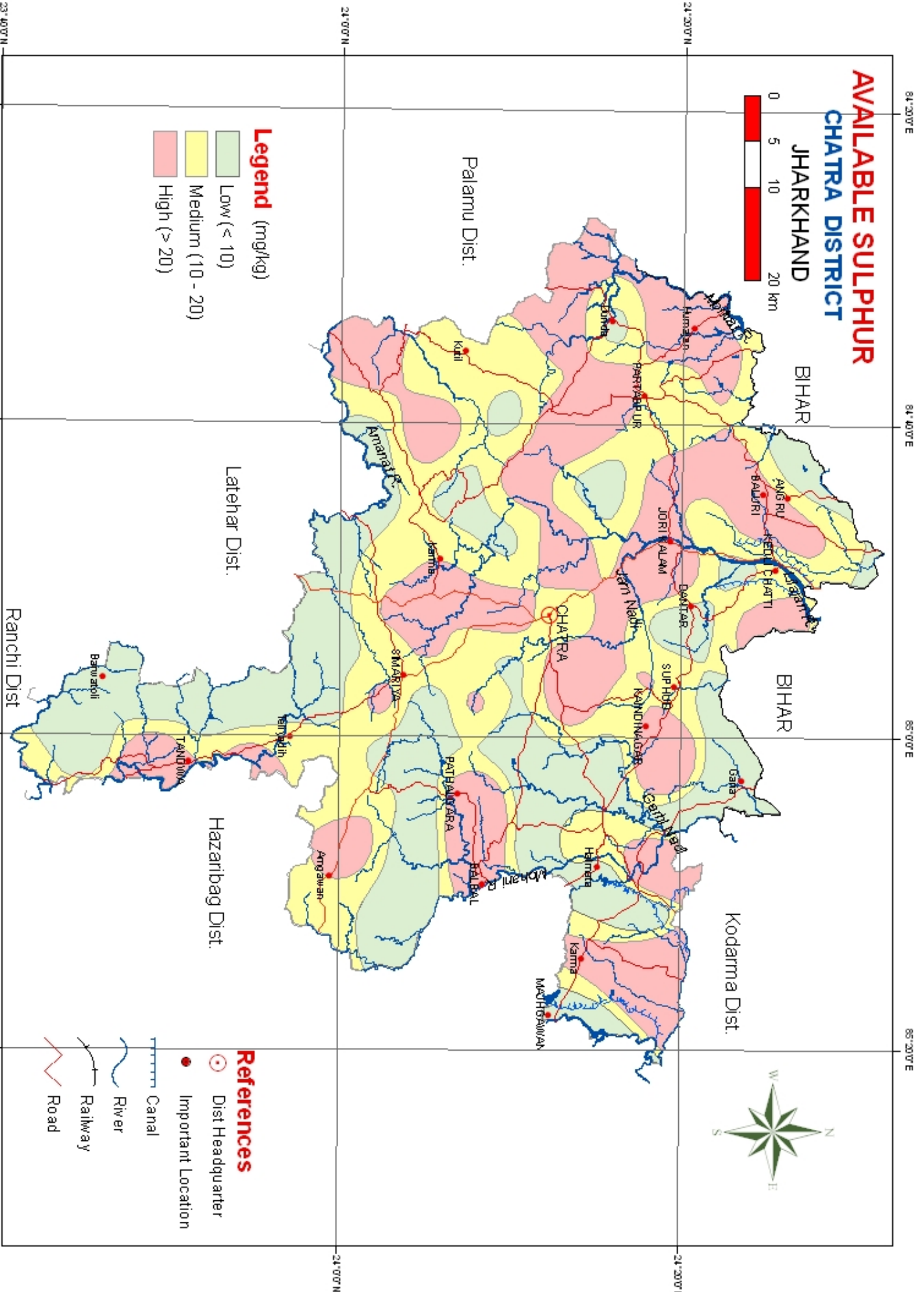


# AVAILABLE SULPHUR CHATRA DISTRICT

JHARKHAND



- Legend (mg/kg)**
- Low (< 10)
  - Medium (10 - 20)
  - High (> 20)



**References**

- Dist Headquarter
- Important Location
- Canal
- River
- Railway
- Road

Fig. 7

# AVAILABLE ZINC CHARTRA DISTRICT JHARKHAND

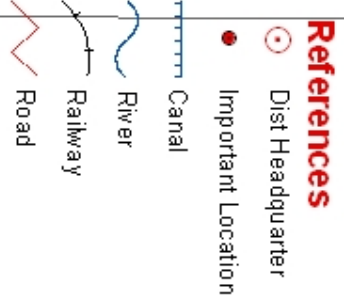
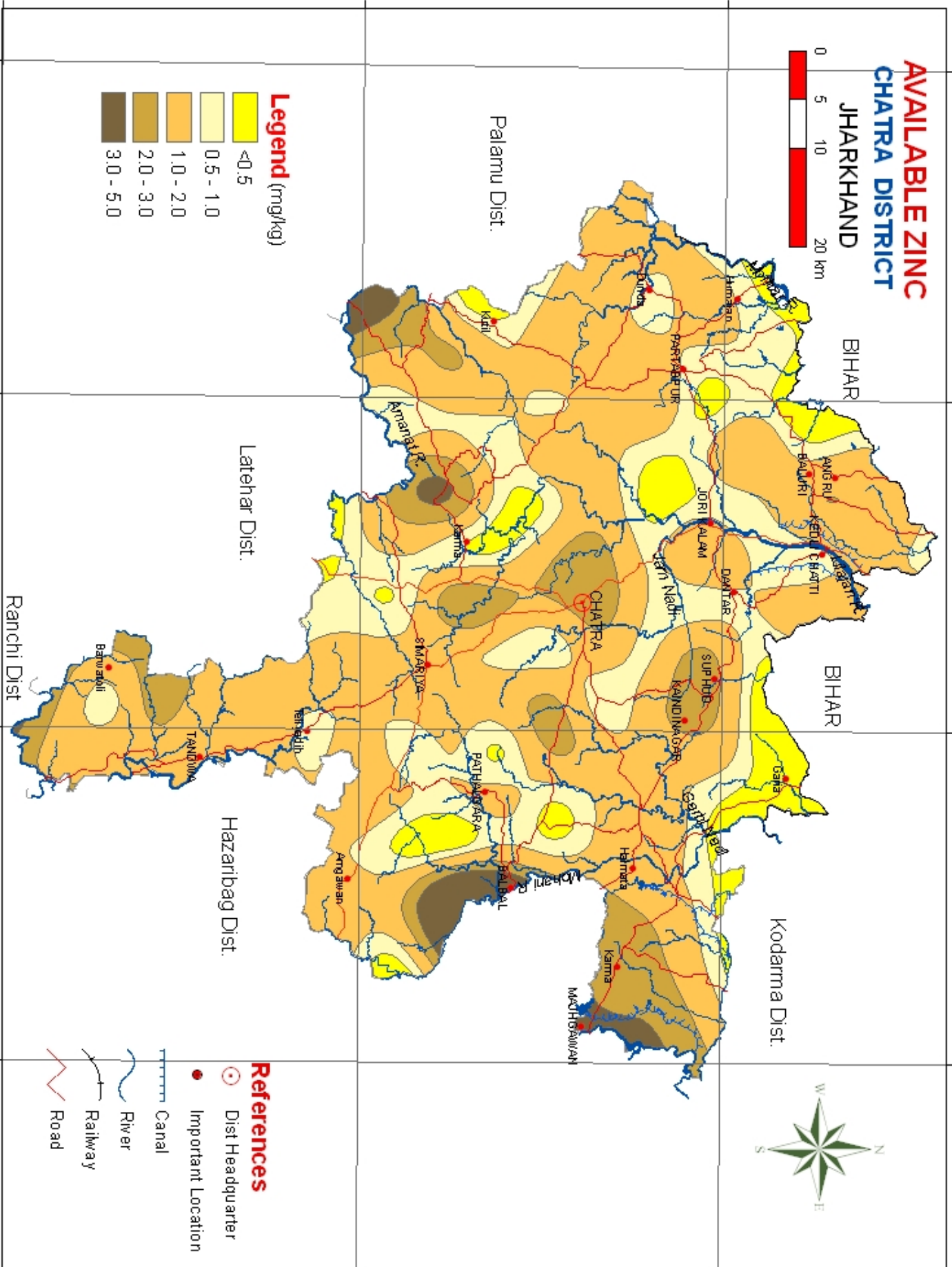
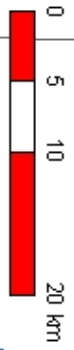
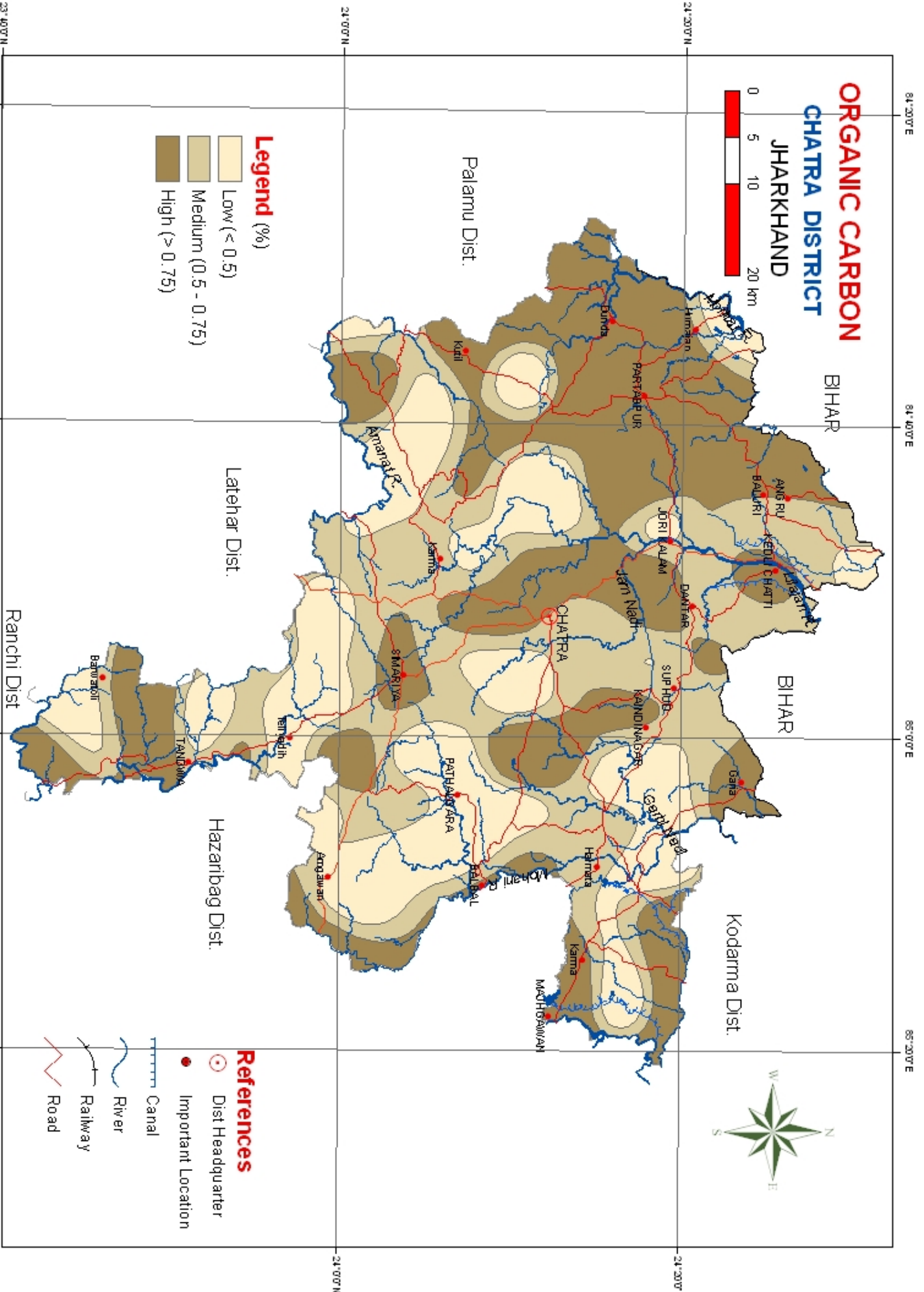
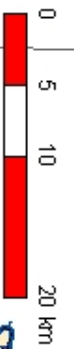


Fig. 10

# ORGANIC CARBON CHATTRA DISTRICT JHARKHAND



- Legend (%)**
- Low (< 0.5)
  - Medium (0.5 - 0.75)
  - High (> 0.75)

- References**
- Dist Headquarter
  - Important Location
  - Canal
  - River
  - Railway
  - Road

Fig. 3

# SOIL REACTION (pH)

## CHATRA DISTRICT JHARKHAND

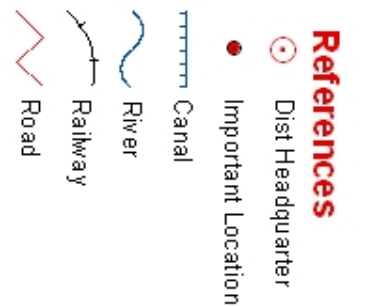
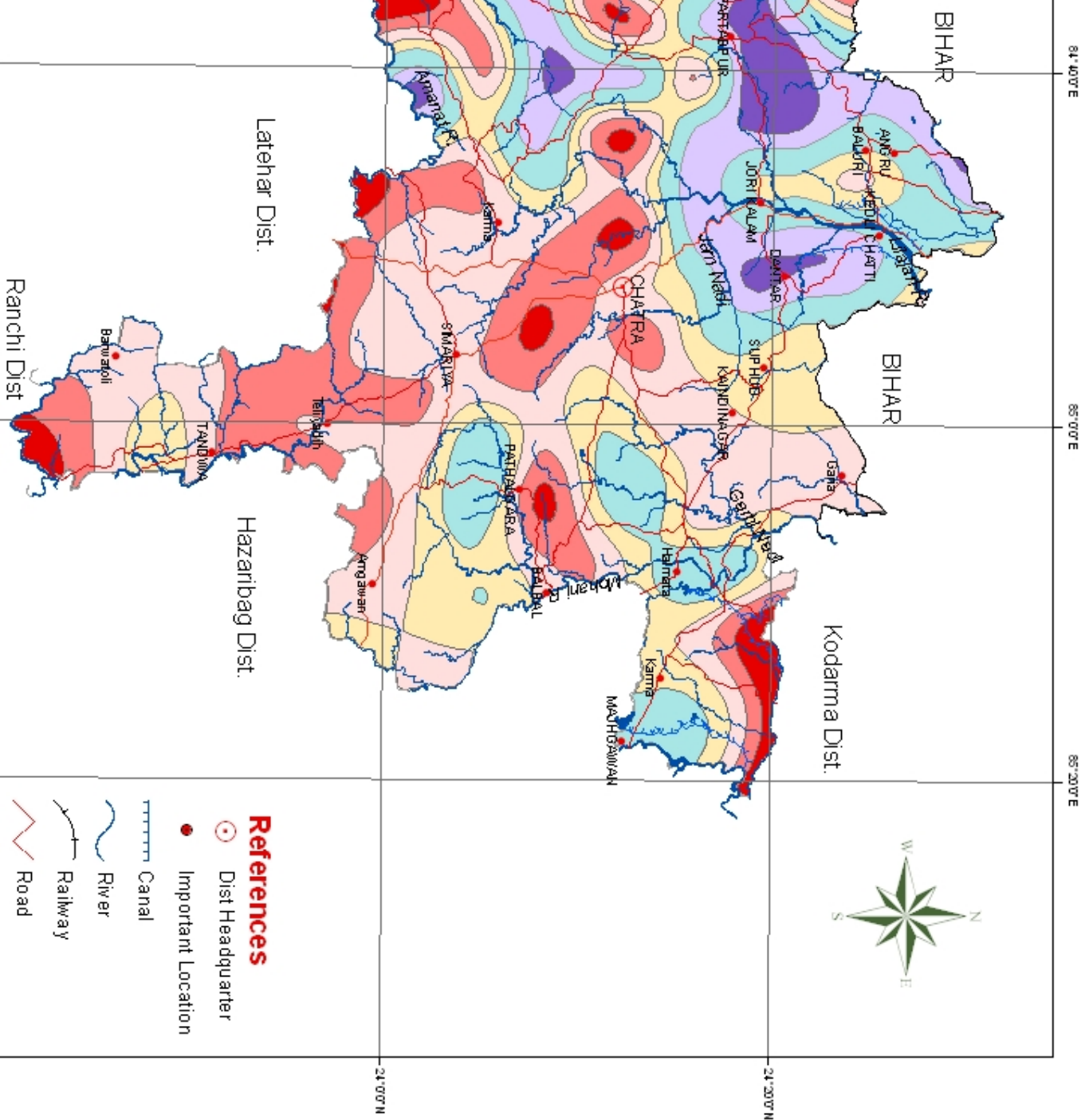
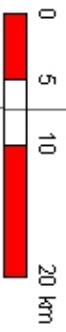


Fig. 2