

Fig. 12

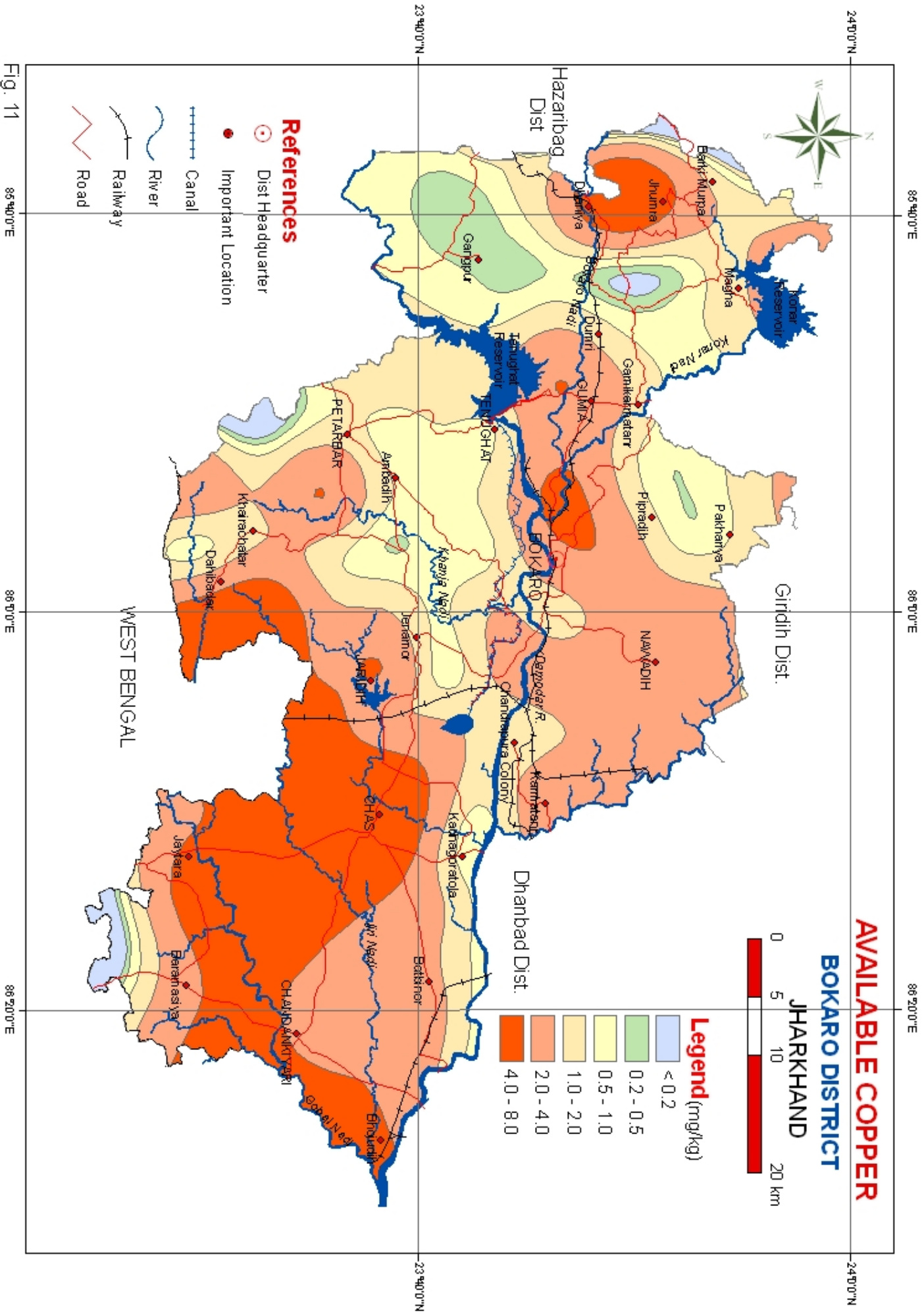


Fig. 11

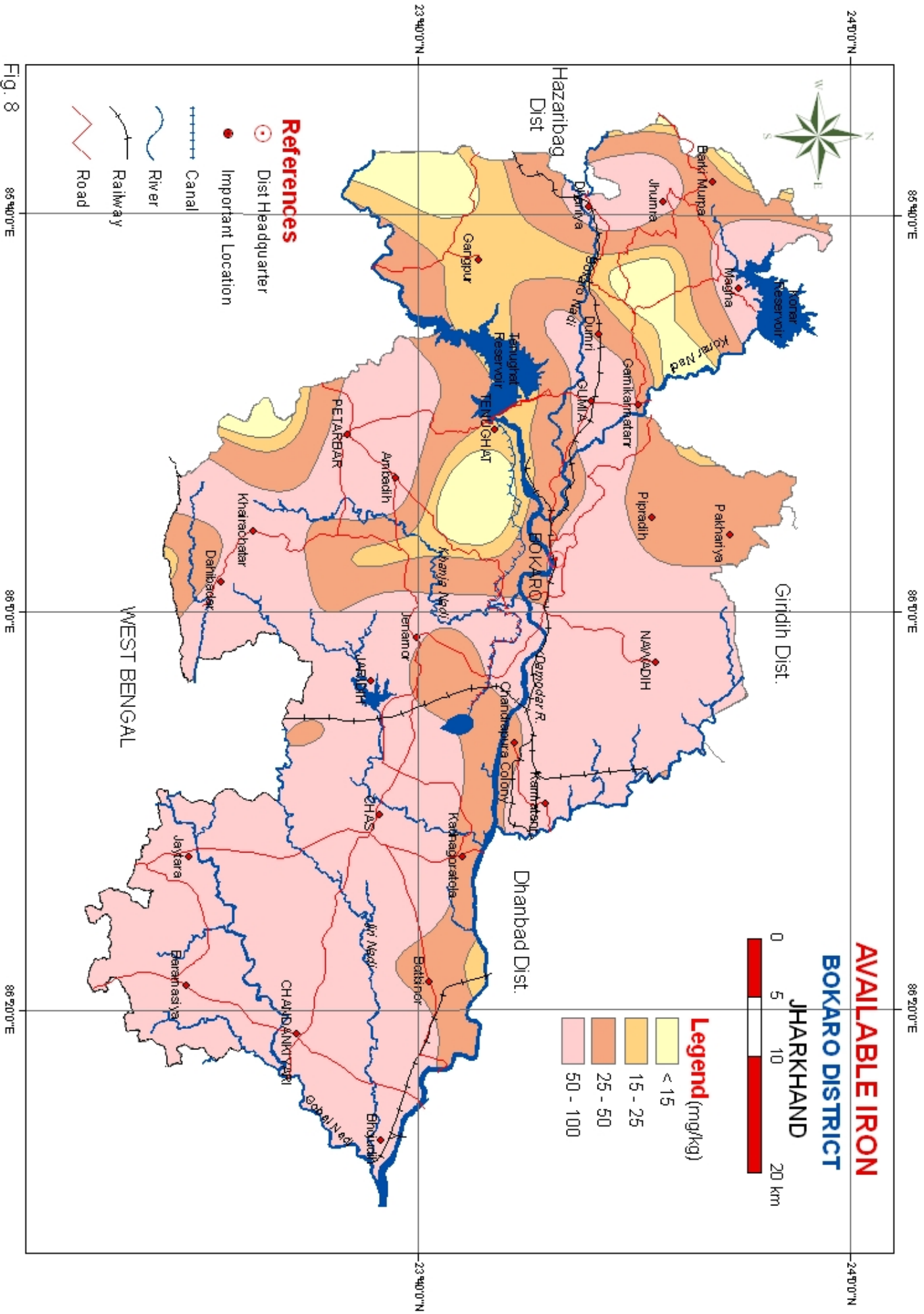


Fig. 8



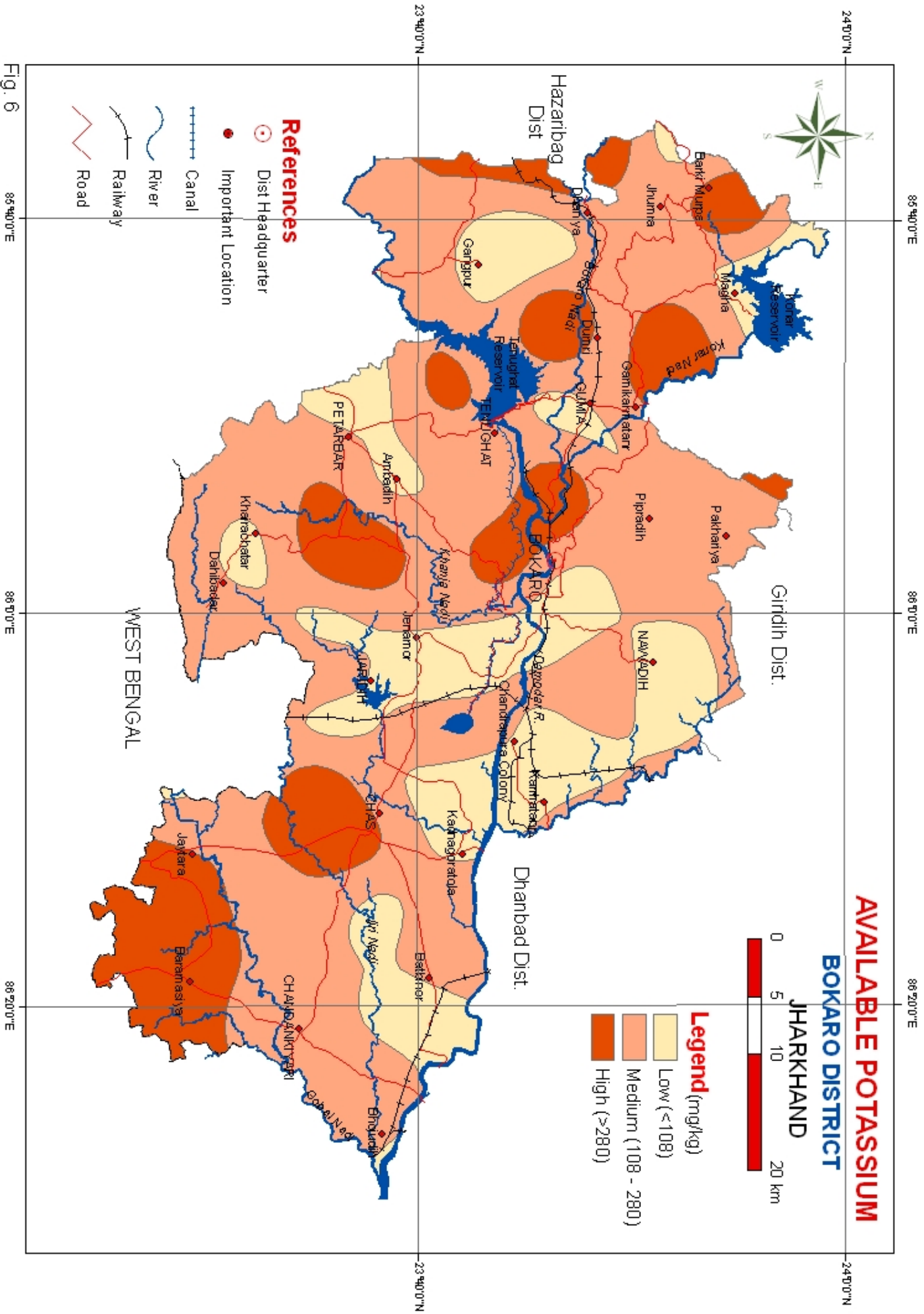
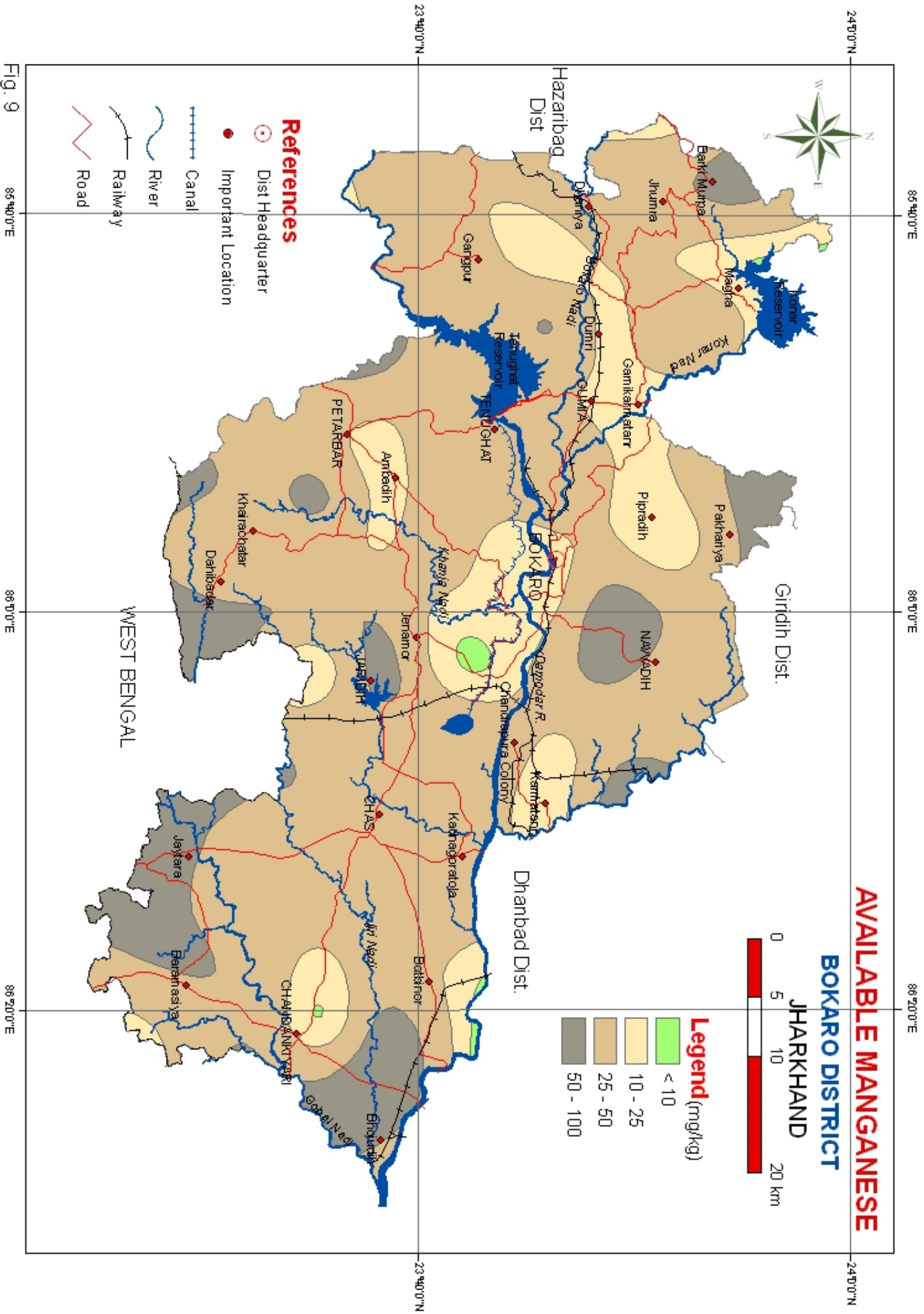


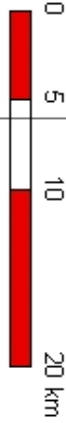
Fig. 6



**AVAILABLE MANGANESE**

**BOKARO DISTRICT**

**JHARKHAND**



**Legend (mg/kg)**

- < 10
- 10 - 25
- 25 - 50
- 50 - 100

**References**

- Dist Headquarter
- Important Location

- Canal
- River
- Railway
- Road

Fig. 9



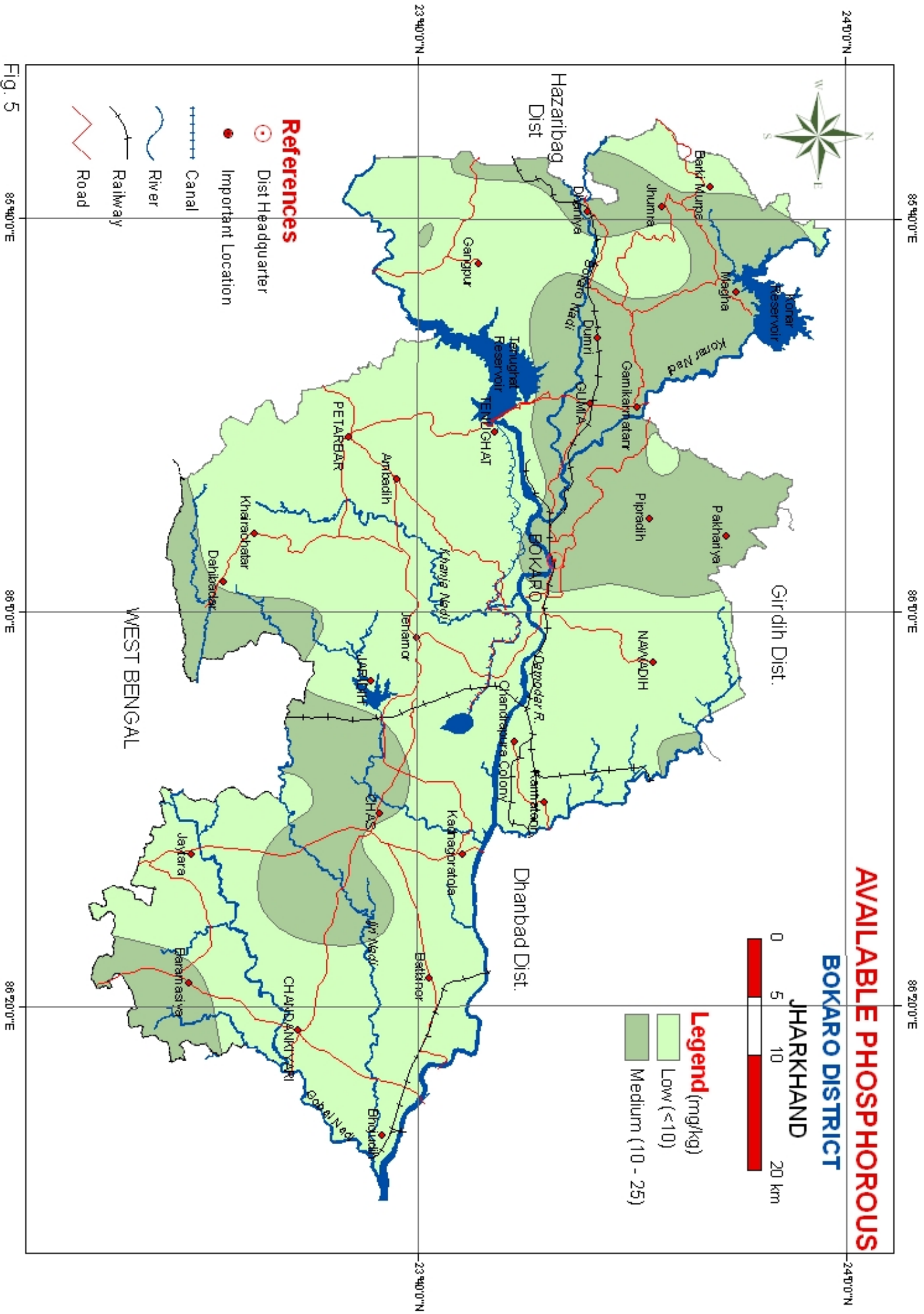


Fig. 5



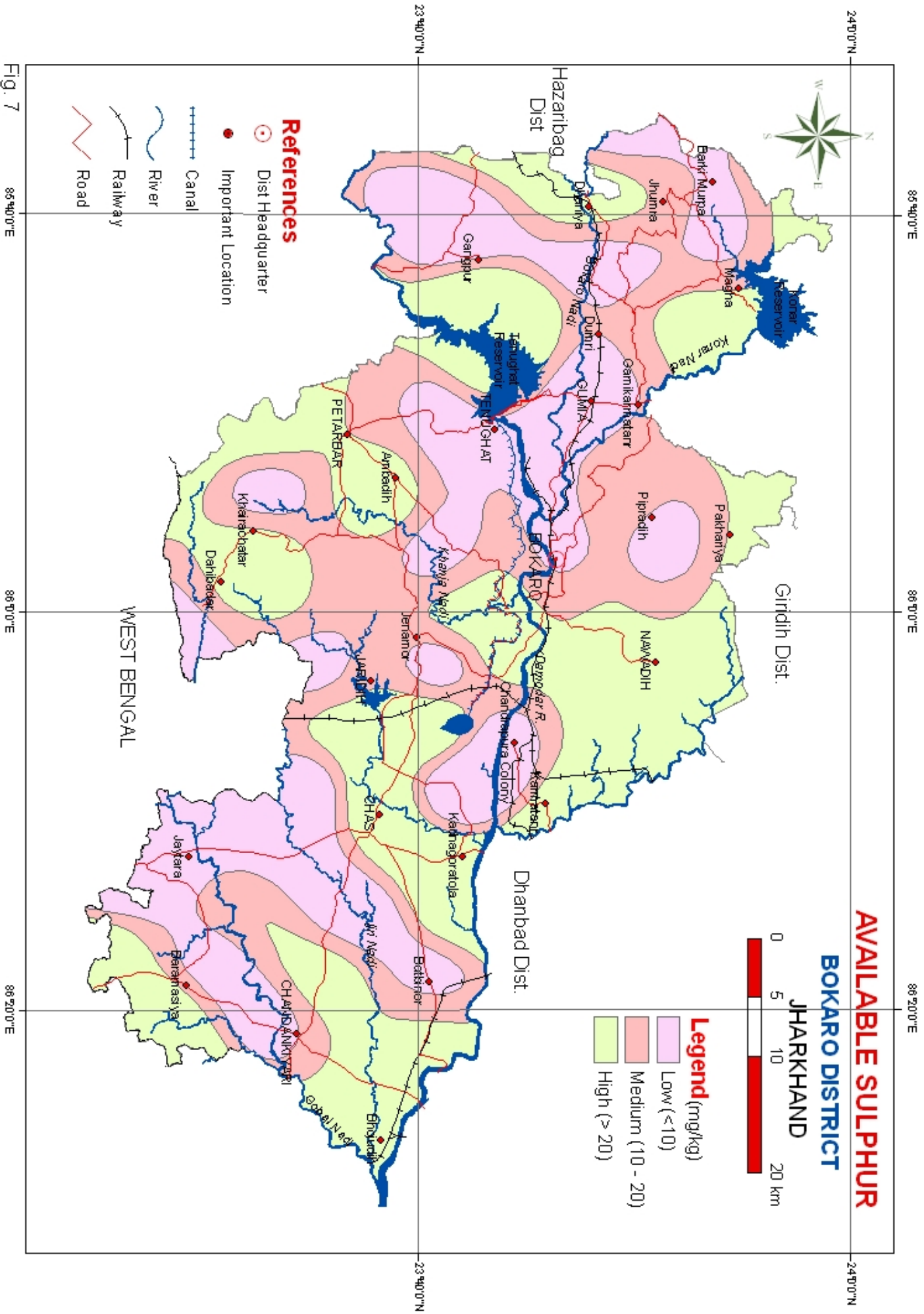


Fig. 7



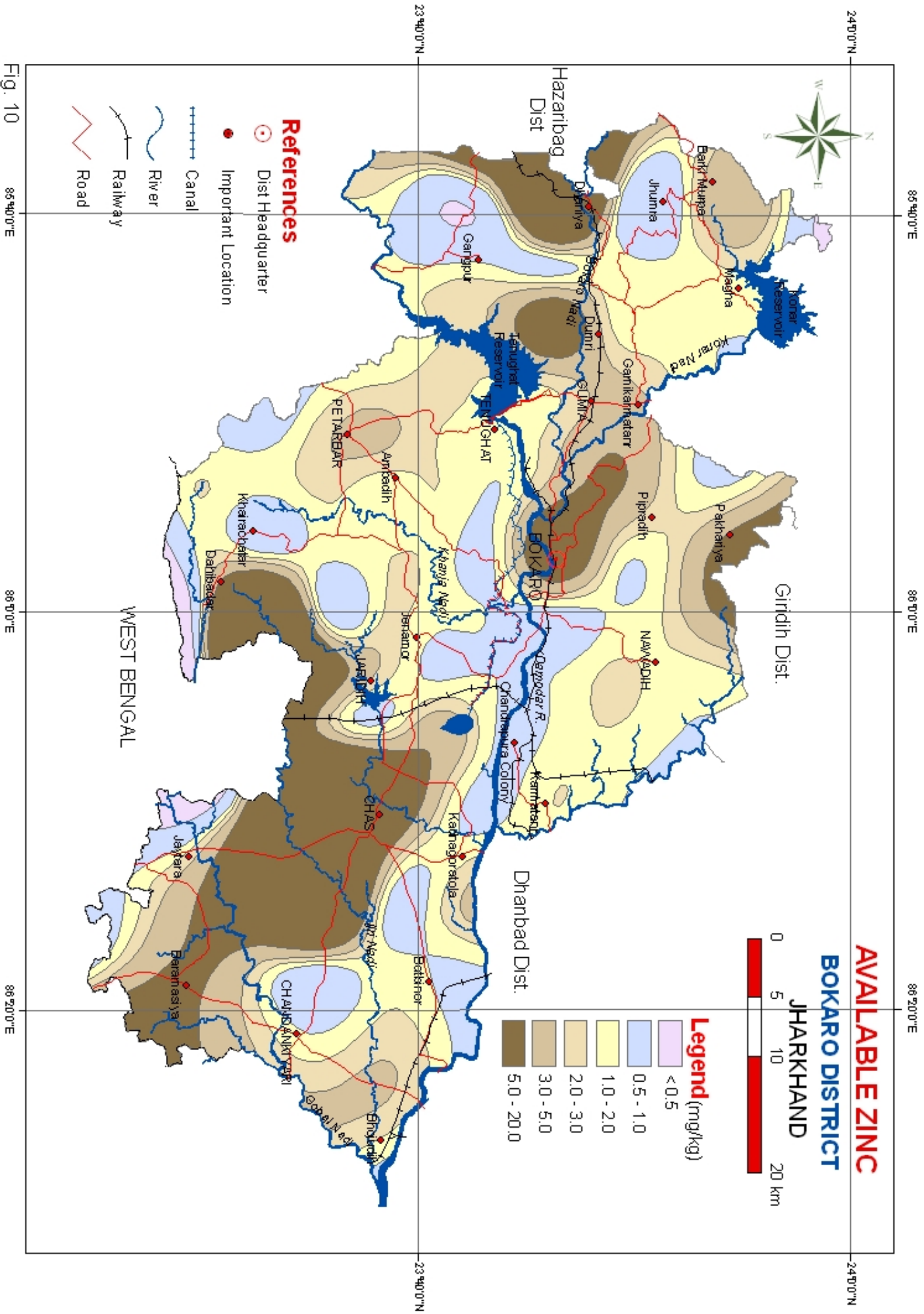


Fig. 10

85°40'0"E

86°10'0"E

86°20'0"E

85°40'0"E

86°10'0"E

86°20'0"E

24°10'0"N

23°40'0"N

23°40'0"N

24°10'0"N

WEST BENGAL

Dhanbad Dist.

Girdih Dist.

Hazaribag Dist.

**References**

- Dist Headquarter
- Important Location
- Canal
- River
- Railway
- Road



**AVAILABLE ZINC**  
**BOKARO DISTRICT**  
**JHARKHAND**

**Legend (mg/kg)**

- <math>< 0.5</math>
- 0.5 - 1.0
- 1.0 - 2.0
- 2.0 - 3.0
- 3.0 - 5.0
- 5.0 - 20.0

**References**

- Dist Headquarter
- Important Location
- Canal
- River
- Railway
- Road

Fig. 10

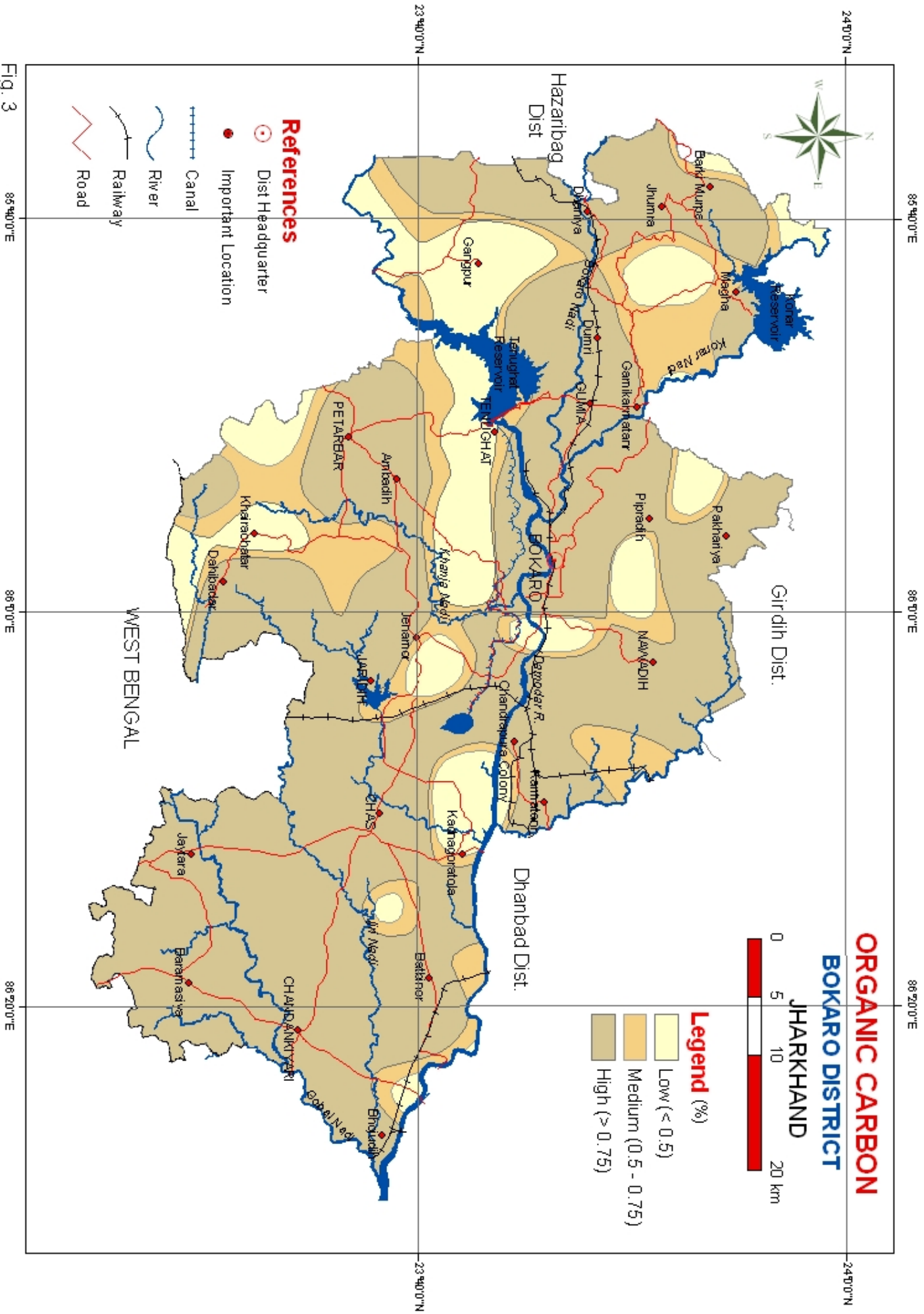
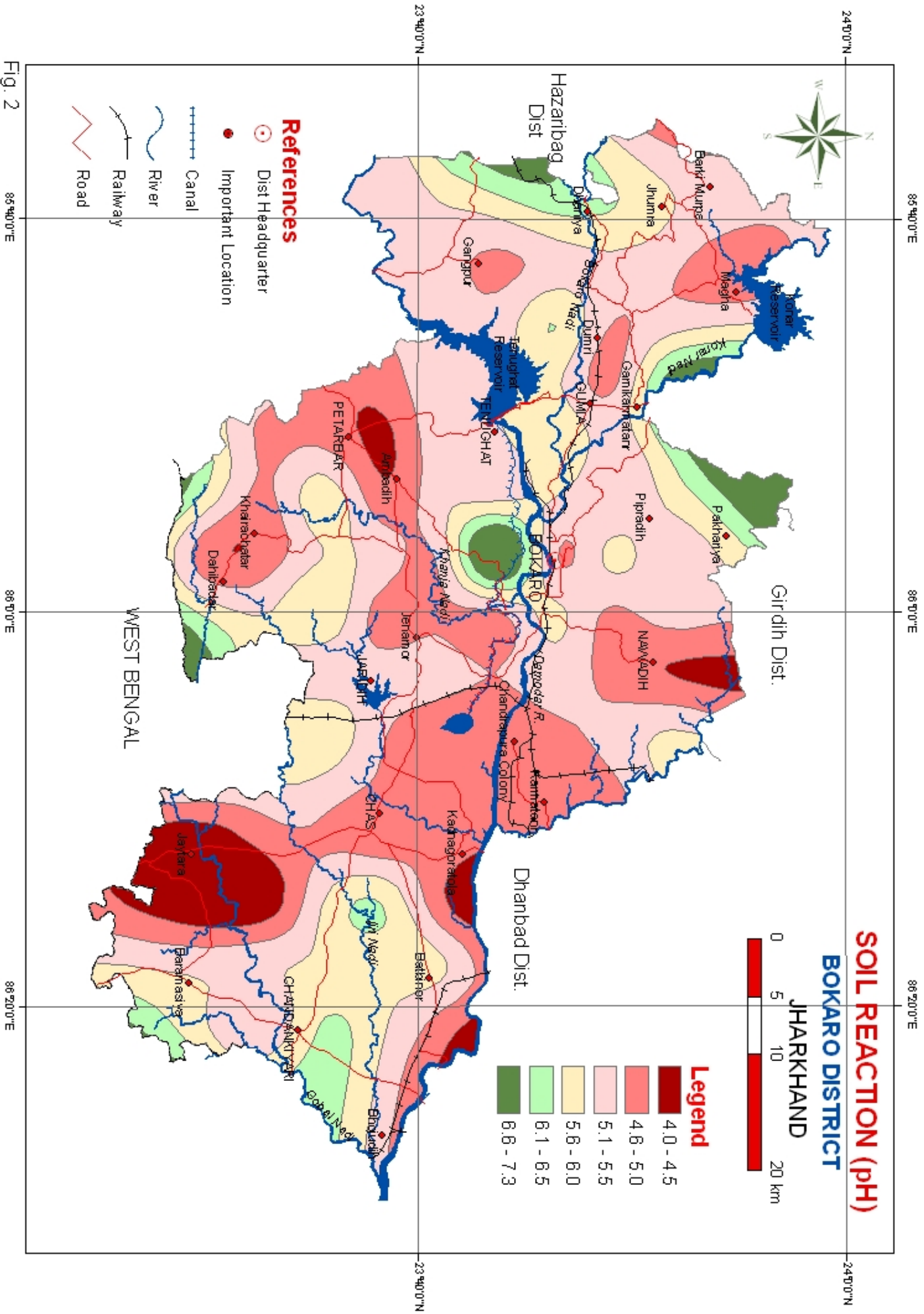


Fig. 3



**SOIL REACTION (pH)**

**BOKARO DISTRICT**

**JHARKHAND**



**Legend**

- 4.0 - 4.5
- 4.6 - 5.0
- 5.1 - 5.5
- 5.6 - 6.0
- 6.1 - 6.5
- 6.6 - 7.3

**References**

- Dist Headquarter
- Important Location
- ++++ Canal
- ~~~~~ River
- - - - Railway
- Road

Fig. 2

85°40'0"E

86°10'0"E

86°20'0"E

85°40'0"E

86°10'0"E

86°20'0"E

24°0'0"N

23°40'0"N

24°0'0"N

23°40'0"N

WEST BENGAL

Dhanbad Dist.

Giridih Dist.

Hazaribag Dist

Jorhat Reservoir

Koanar Reservoir

Tenuchit Reservoir

Chandrapura Colony

PETARBAR

DAHIBAR

NAWADIH

CHANDRAPURA COLONY

CHANDRAPURA COLONY

CHANDRAPURA COLONY

CHANDRAPURA COLONY

CHANDRAPURA COLONY

CHANDRAPURA COLONY

CHANDRAPURA COLONY

CHANDRAPURA COLONY

CHANDRAPURA COLONY

CHANDRAPURA COLONY

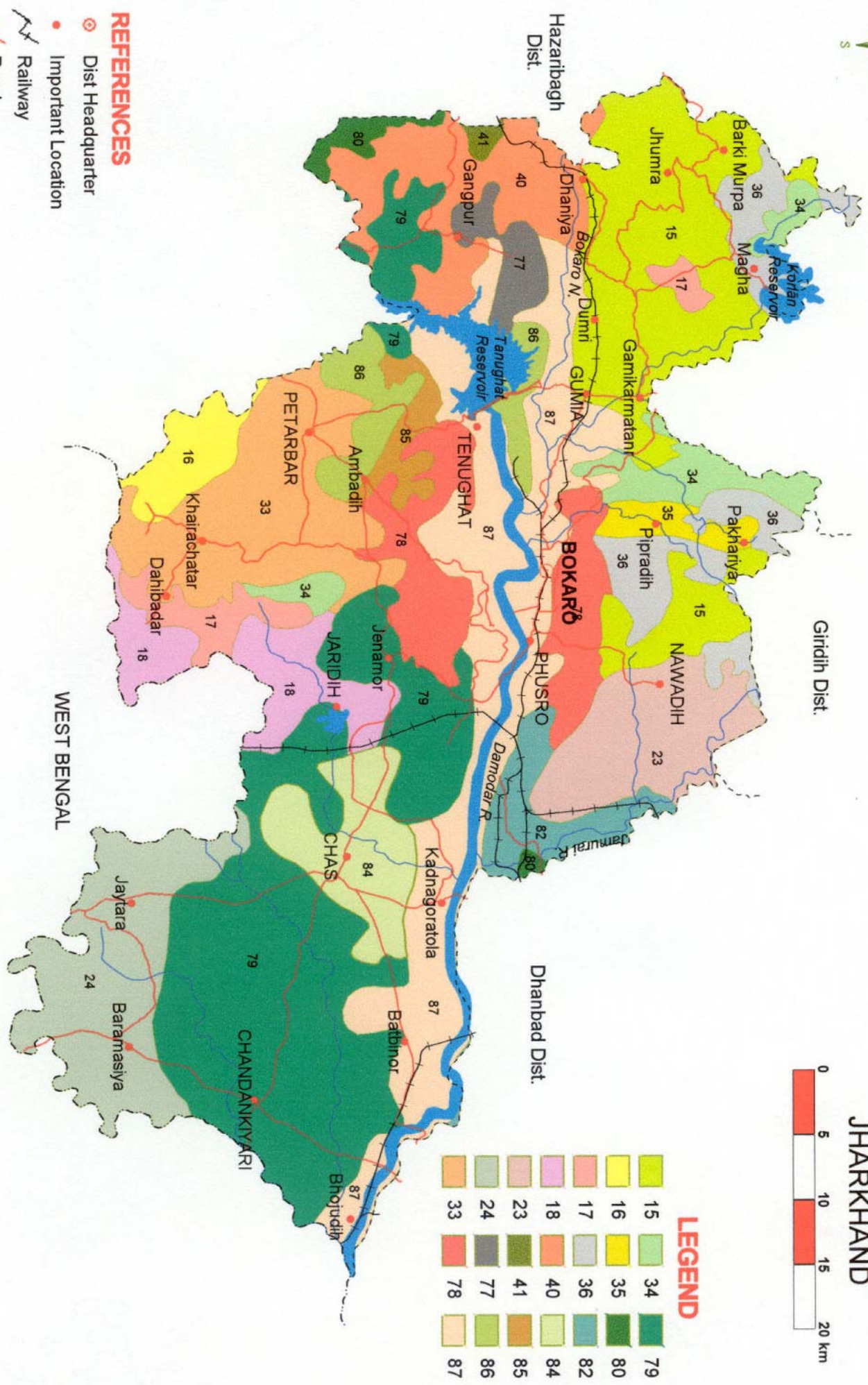
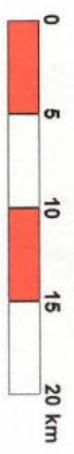
CHANDRAPURA COLONY





# SOILS

## BOKARO DISTRICT JHARKHAND



**LEGEND**

15	34	79
16	35	80
17	36	82
18	40	84
23	41	85
24	77	86
33	78	87

**REFERENCES**

- ⊙ Dist Headquarter
- Important Location
- ⚡ Railway
- ⬮ Road
- 🌊 River

Fig. - 1