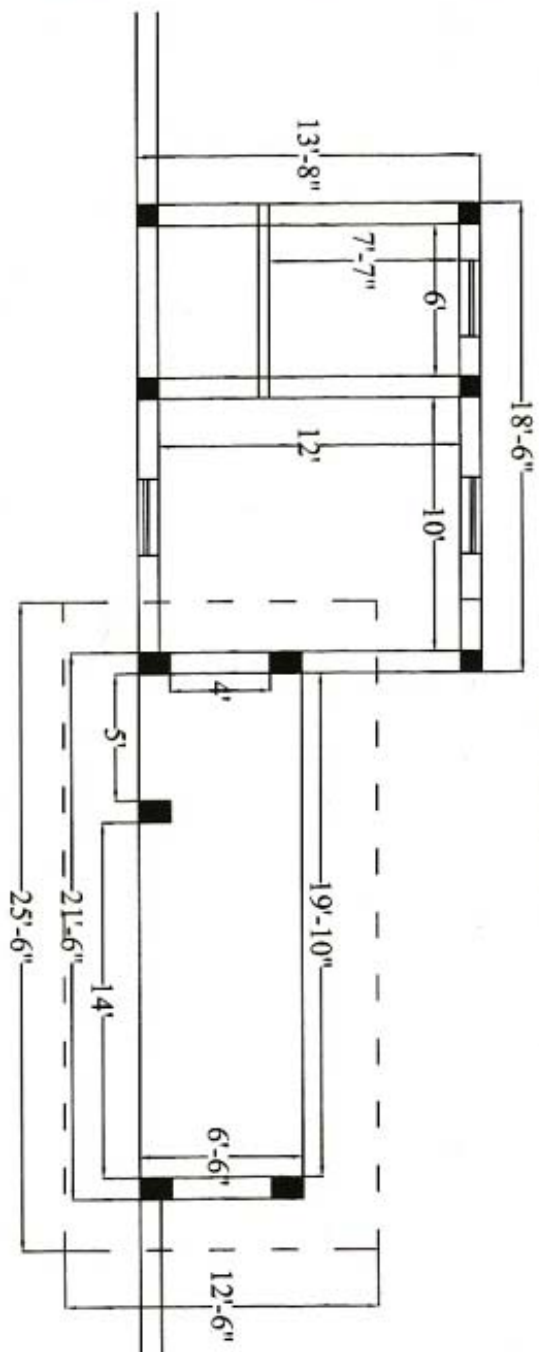
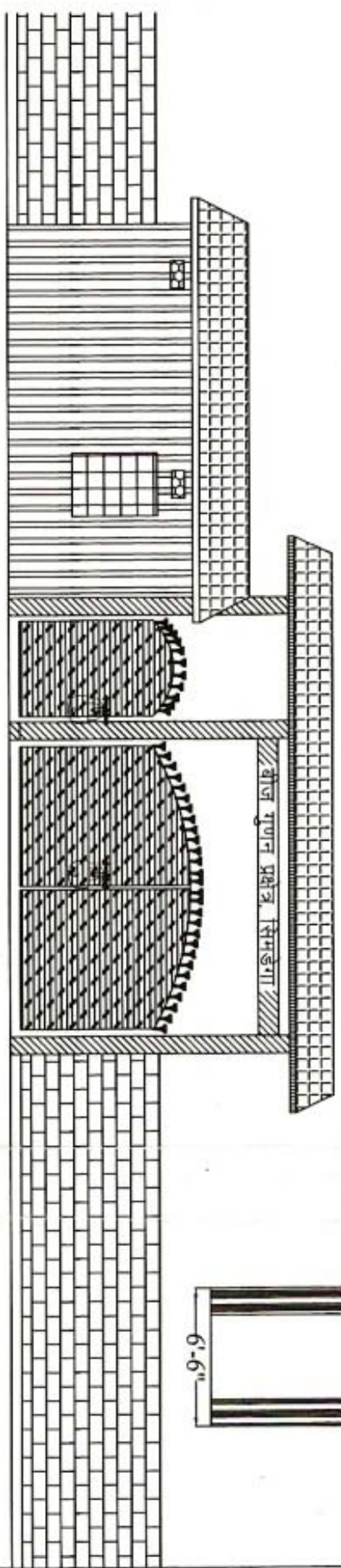


PROPOSED PLAN OF ENTRANCE GATE OF S.M FARM

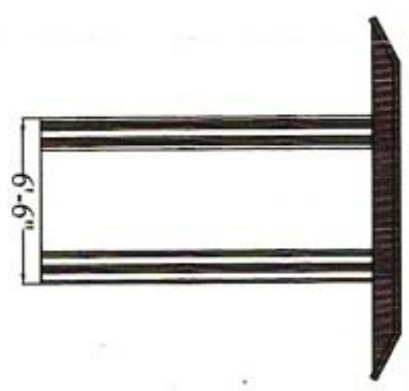
DIST-



PLAN



ELEVATION



PROPOSED PLAN OF BOUNDARY WALL BARBED WIRE AT S.M FARM SIMDEGA, SIMDEGA

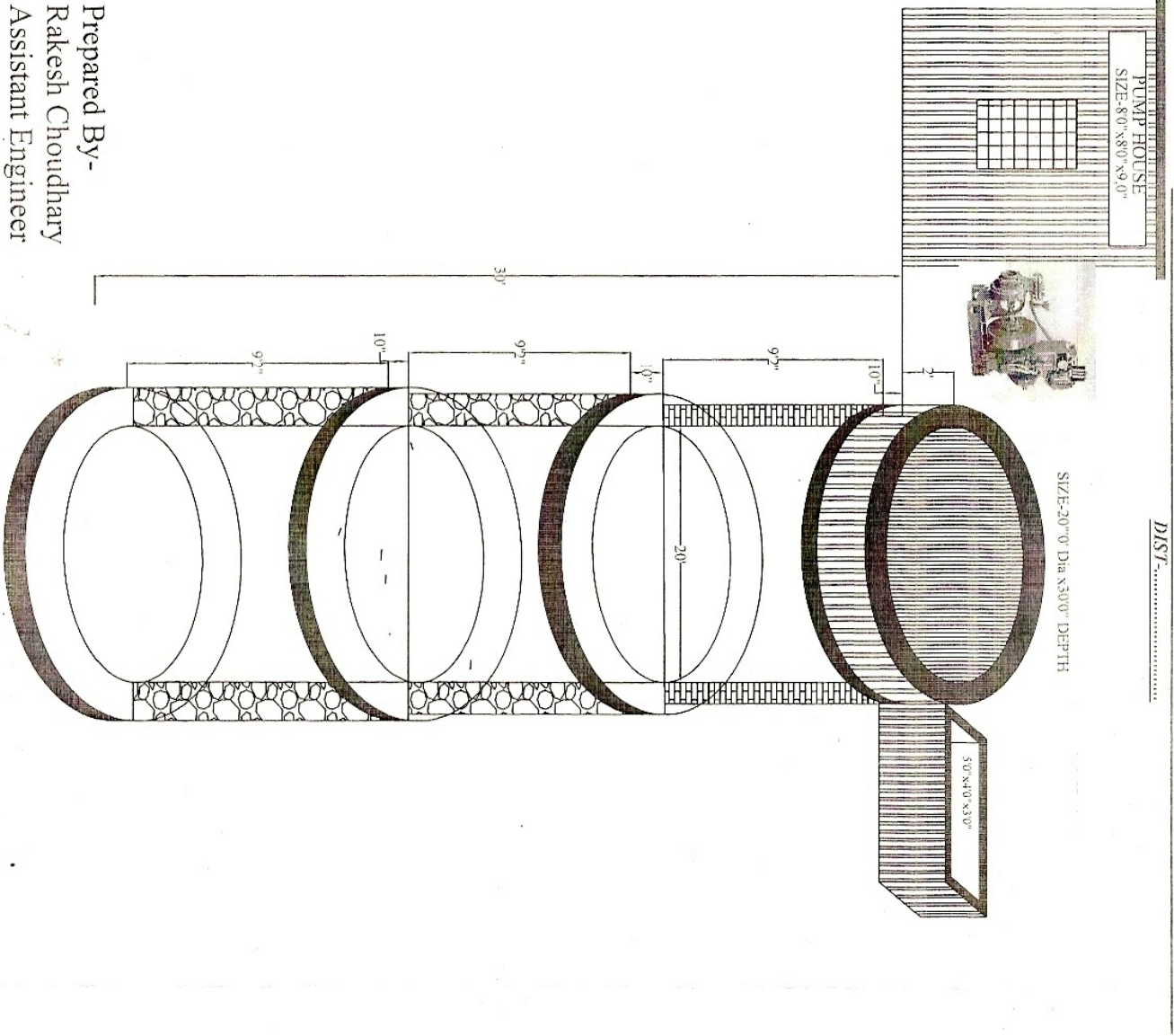


FRONT ELEVATION

Prepared By:- Rakesh Choudhary
Assistant Engineer, Ranchi

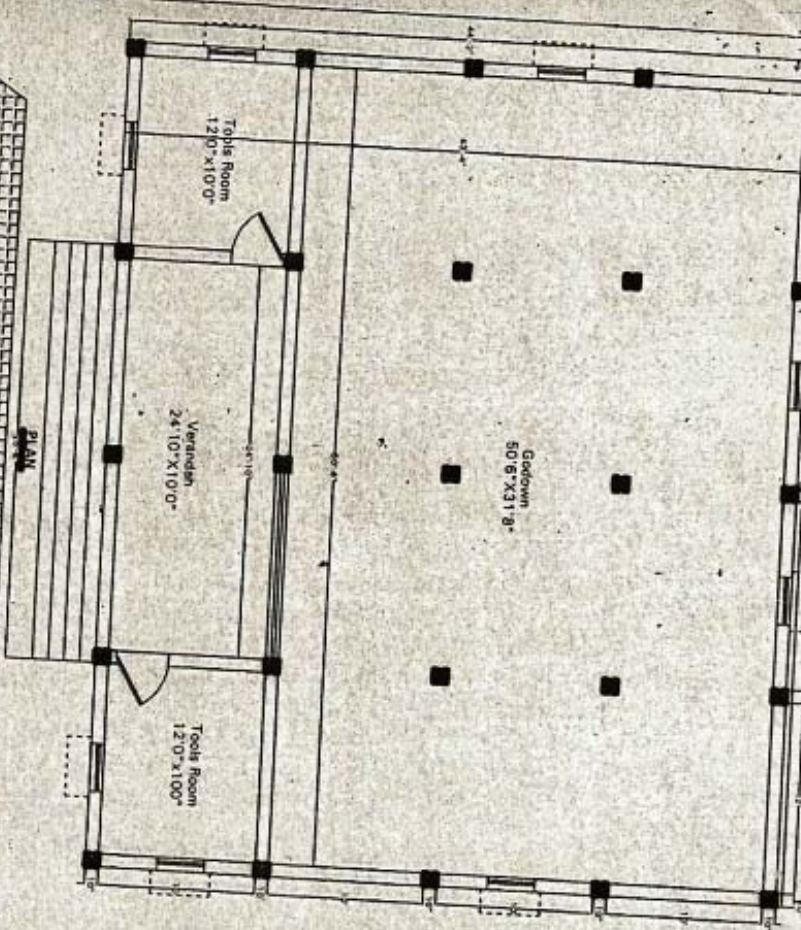
PROPOSED PLAN OF FARM IRRIGATION WELL WITH PUMP HOUSE AT S.M FARM.....

DIST:.....

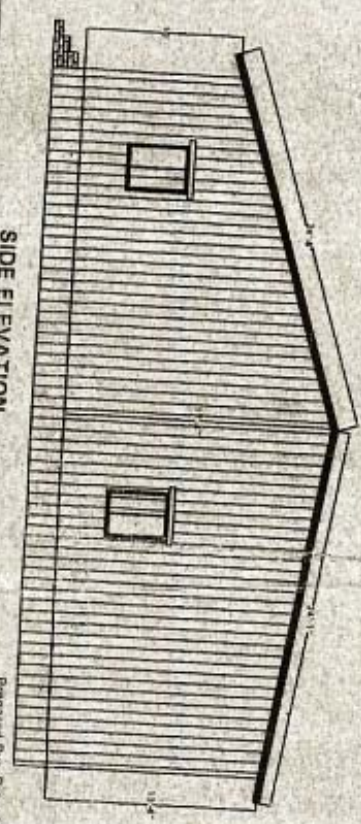


Prepared By-
Rakesh Choudhary
Assistant Engineer

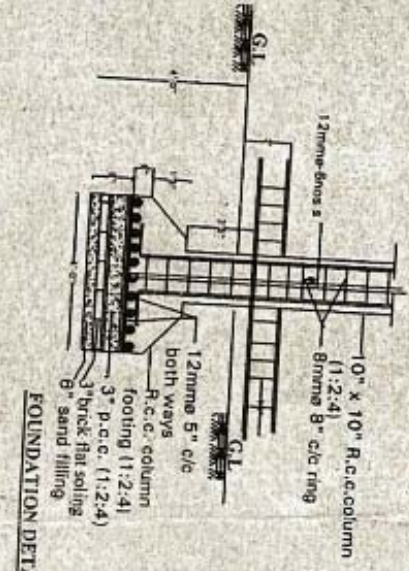
PROPOSED PLAN OF GODDOWN AT S.M FARM CHANDALI, DISTRICT - GUMLA



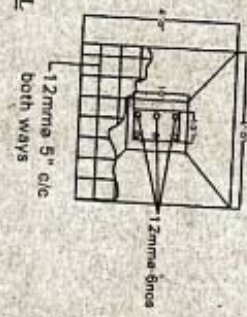
FRONT ELEVATION



SIDE ELEVATION



FOUNDATION DETAIL

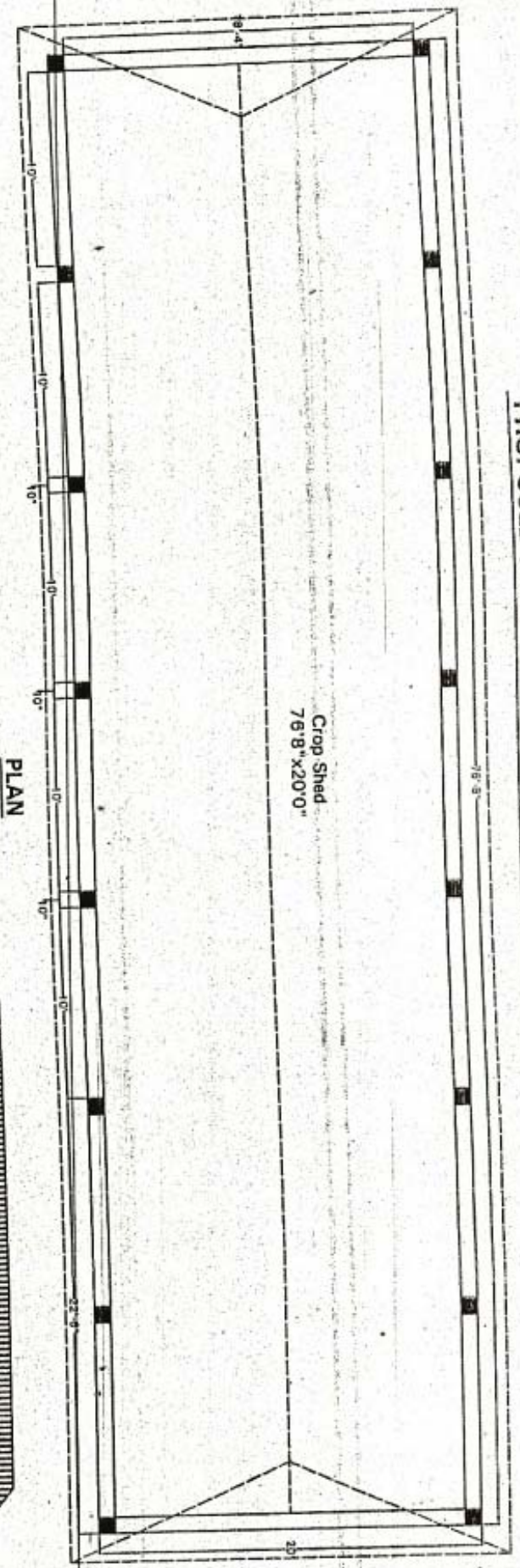


12/5.3.0 Providing R.C.C M-150 in nominal mix of (1:2:4) in roof slab

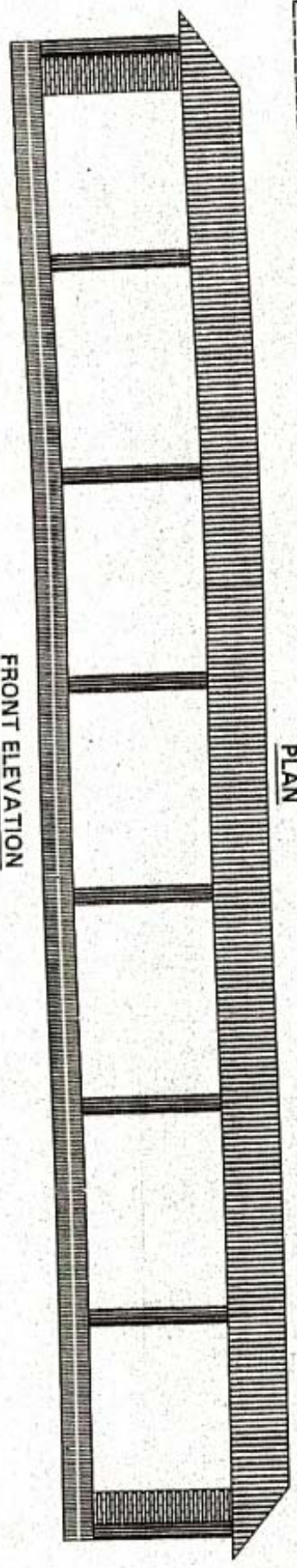
2-7-11 2004.01 2109/03

Prepared By: Reshmi Choudhary
Assistant Engineer, Ranchi

PROPOSED PLAN OF CROP SHED AT S.M FARM, RANCHI

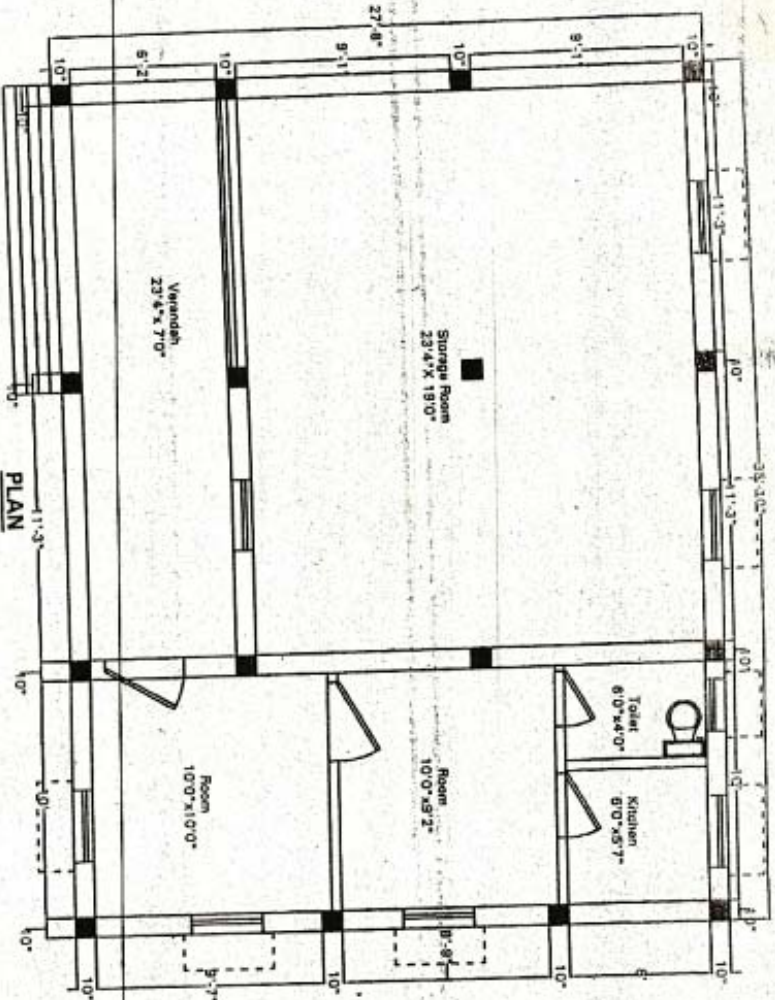


FRONT ELEVATION

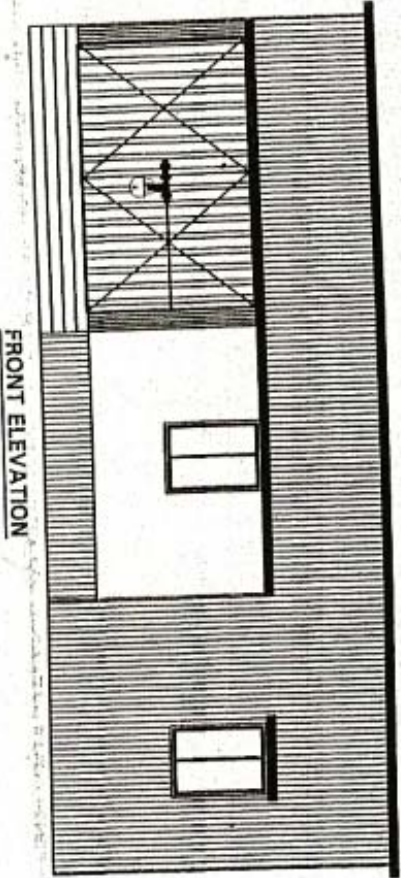


Prepared By:- Rakesh Choudhary
Assistant Engineer, Ranchi

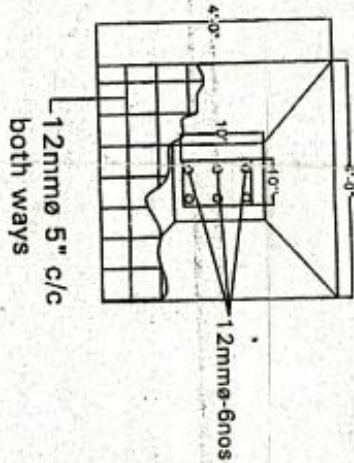
PROPOSED PLAN OF STORAGE & CHOUKIDAR HUT AT S.M FARM, RANCHI



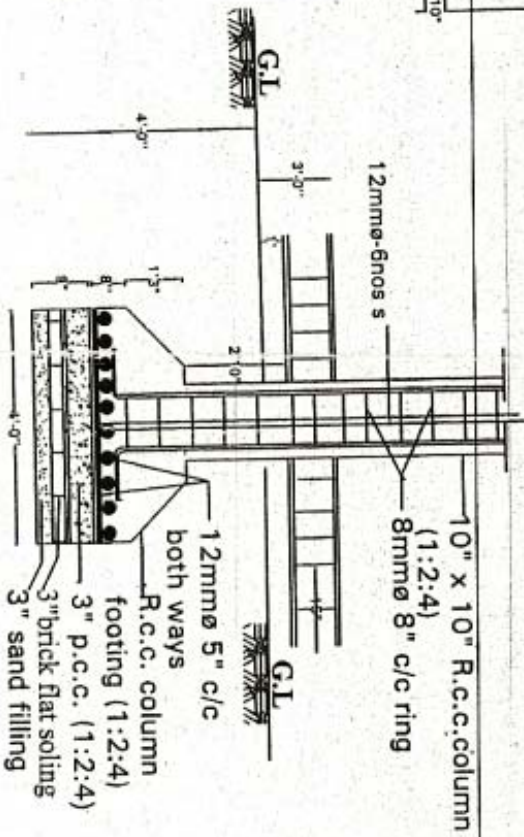
PLAN



FRONT ELEVATION



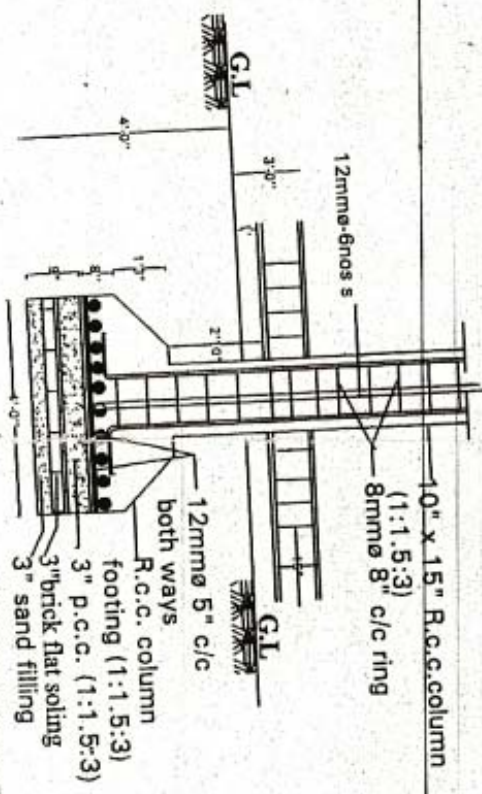
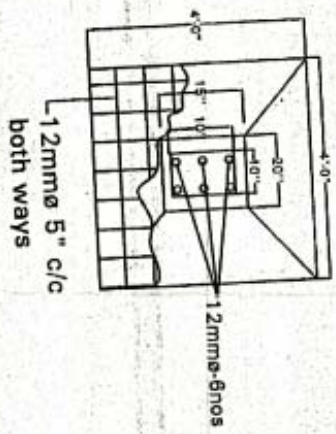
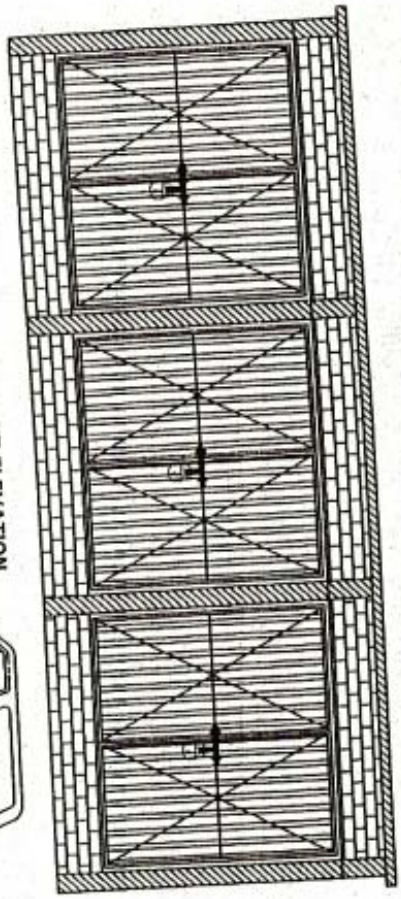
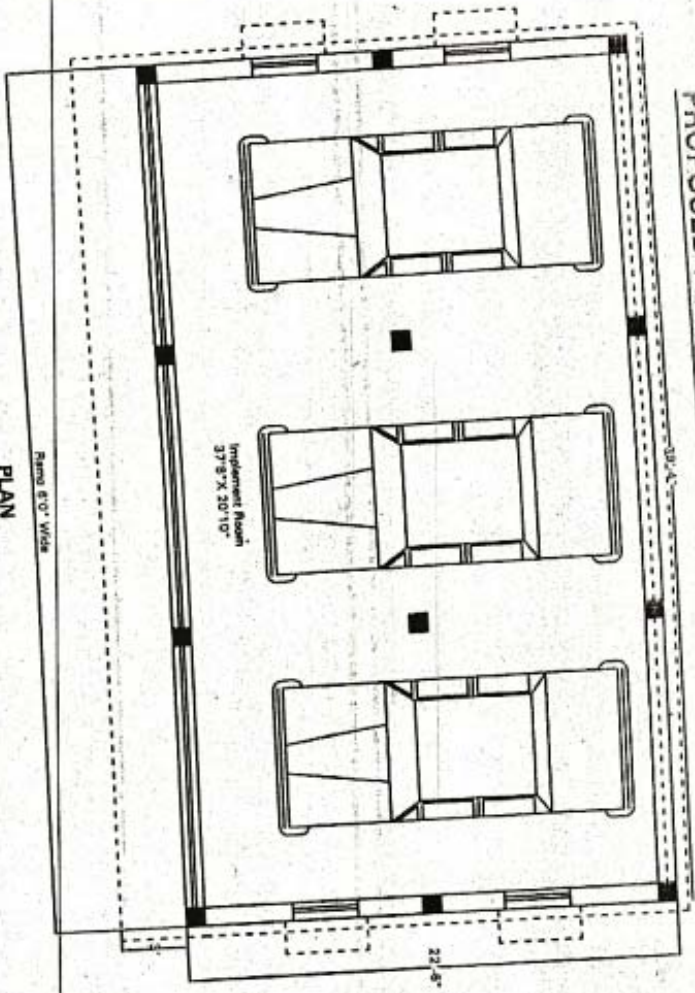
12mmø 5" c/c both ways



FOUNDATION DETAIL

Prepared By:- Rakesh Choudhary

PROPOSED PLAN OF IMPLEMENT SHED AT S.M FARM, RANCHI



FOUNDATION DETAIL

Prepared By:- Rakesh Choudhary
Assistant Engineer, Ranchi